

Converting Colors

CIELCh(60, 51.502, 11.235)

Have a look what the booklet for
CIELCh(60, 51.502, 11.235) contains.

CIELCh(60, 51.456, 11.178)	3
<i>Conversions</i>	4
<i>Details</i>	6
<i>Harmonies</i>	11
<i>Previews</i>	20
<i>Color Blindness Simulation</i>	23
<i>CSS Examples</i>	26

Color

CIELCh(60, 51.456, 11.178)

Conversions

Conversions Part 1

Format	Color
Hex	E46881
RGB	228, 104, 129
RGB Percent	89%, 41%, 51%
CMY	0.1043, 0.5908, 0.4928
CMYK	0.00, 0.54, 0.43, 0.10
HSL	348°, 70%, 65%
HSV	348°, 54%, 90%
XYZ	41.0896, 28.1233, 24.1471
YIQ	143.9260, 65.8790, 34.0630

Conversions

Conversions Part 2

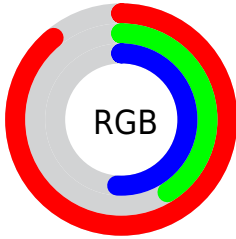
Format	Color
R_{YB}	228, 104, 129
Decimal	14968961
CIE _{Lab}	60.00, 50.48, 9.98
CIE _{LCh}	60, 51.456, 11.178
Yxy	28.1233, 0.4401, 0.3012
Android (android.graphics.Color)	4293159041 (0xFFE46881)
YUV	143.9260, -7.3585, 73.7329
Hunter-Lab	53.0314, 45.4995, 10.1252

Details

The CIELCh color **60, 51.456, 11.178** is a light color, and the websafe version is hex **CC6666**. A complement of this color would be **83, 40.615, 177.607**, and the grayscale version is **60, 0.008, 296.813**.

A 20% lighter version of the original color is **76, 38.617, 4.901**, and **40, 51.427, 11.012** is the 20% darker color. If you saturate the color by 10%, you get **56, 60.773, 14.001**, and if you desaturate by 10%, it is **65, 41.660, 8.953**.

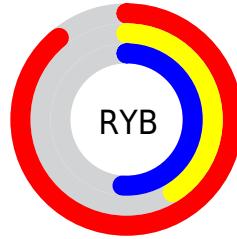
Distribution



Red (89%)

Green (41%)

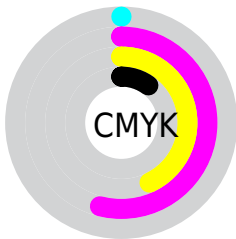
Blue (51%)



Red (89%)

Yellow (41%)

Blue (51%)

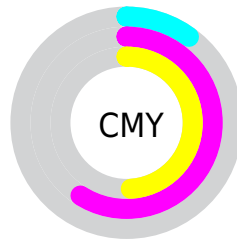


Cyan (0%)

Magenta (54%)

Yellow (43%)

Black (10%)



Cyan (10%)

Magenta (59%)

Yellow (49%)

Brightness & Saturation Gradients

These gradients show how the CIELCh color 60, 51.456, 11.178 changes by changing the brightness by 10 percent. The first figure shows a shift by +10% for each color and the second figure -10%.

Similar to the brightness gradients but the following saturation gradients show a change of the CIELCh color 60, 51.456, 11.178 by changing the saturation by 10% instead.

60, 51.456, 11.178

60, 51.456, 11.178

100, 51.456,
11.178

50, 51.456, 11.178

80, 51.456, 11.178

40, 51.456, 11.178

90, 51.456, 11.178

30, 51.456, 11.178

20, 51.456, 11.178

10, 51.456, 11.178

0, 51.456, 11.178

60, 51.456, 11.178

60, 51.456, 11.178

56, 60.773, 14.001

65, 41.660, 8.953

52, 69.235, 17.570

70, 31.763, 7.171

■ 50, 76.577, 21.990

■ 76, 22.036, 5.720

■ 48, 82.789, 27.165

■ 82, 12.656, 4.504

■ 48, 86.042, 30.162

■ 88, 3.712, 3.388

■ 94, 4.762, 182.791

■ 98, 9.054, 198.906

Harmonies

Complementary

The Complementary color scheme is a pair of colors which are on the opposite of each other on the color wheel.



60, 51.456, 11.178



83, 40.615, 177.607

Rectangle

The Rectangle color scheme consists of four colors that form a rectangle on the color wheel.



60, 51.456, 11.178



60, 51.456, 61.178



60, 51.456, 191.178



60, 51.456, 241.178

Sweetspot

The Sweet Spot groups the original color and five complimentary colors.



60, 51.453, 11.180



89, 15.547, 4.708



60, 74.083, 320.548



46, 10.552, 4.951



0, 0.000, 0.000



53, 0.007, 296.813

Same Dimension

The Same Dimension uses a secret algorithm to generate beautiful new colors.



60, 51.453, 11.180



62, 67.106, 14.350



67, 44.856, 47.418



45, 4.980, 3.971



37, 70.954, 29.202



7, 26.666, 13.357

Inverse Universe

The Inverse Universe completely reimagines the original color for something new.



60, 51.453, 11.180



62, 67.106, 14.350



74, 30.758, 236.522



45, 4.980, 3.971



37, 70.954, 29.202



7, 26.666, 13.357

Previews

White Background



This preview shows how the CIELCh color 60, 51.456, 11.178 looks on a white background.

Color Contrast Check

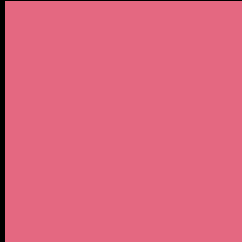
Large Text (above 18pt) WCAG AA ✓ Pass

Any Text WCAG AA ✗ Fail

Large Text (above 18pt) WCAG AAA ✗ Fail

Any Text WCAG AAA ✗ Fail

Black Background



This preview shows how the CIELCh color 60, 51.456, 11.178 looks on a black background.

Color Contrast Check

Large Text (above 18pt) WCAG AA ✓ Pass

Any Text WCAG AA ✓ Pass

Large Text (above 18pt) WCAG AAA ✓ Pass

Any Text WCAG AAA × Fail

If you want to check with other color combinations, try the [Color Contrast Checker](#).

CIELCh 60, 51.456, 11.178

Background



This preview shows how black text looks on a background with the CIELCh color 60, 51.456, 11.178.



This preview shows how white text looks on a background with the CIELCh color 60, 51.456, 11.178.

Color Blindness Simulation

Color vision deficiency is a very complex topic, and I could not describe the different causes any better than Wikipedia does, so if you want to learn more, you should check out their [article about color blindness](#).

Dichromacy



Original Color

60, 51.456, 11.178

Protanopia

60, 4.042, 301.521

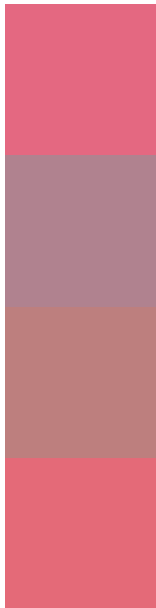
Deuteranopia

60, 14.527, 58.165



Tritanopia
60, 50.842, 21.615

Trichromacy



Original Color
60, 51.456, 11.178

Protanomaly
59, 19.723, 359.940

Deuteranomaly
59, 26.056, 23.441

Tritanomaly
60, 51.032, 17.577

Monochromacy



Original Color
60, 51.456, 11.178

Achromatopsia
60, 0.008, 296.813

Achromatomaly
59, 18.809, 5.949

CSS Examples

Text

The CSS property to change the color of the text to CIELCh 60, 51.456, 11.178 is called "color". The color property can be set on classes, ids or directly on the HTML element.

This example shows how text in the color `rgb(228, 104, 129)` looks like.

```
.text, #text, p{  
    color:rgb(228, 104, 129)  
}
```

If you want to add a text shadow in that color use the text-shadow property, you can generate a text shadow directly with our [CSS Text Shadow Generator](#).

Here you see how black text with a 4 pixel rgb(228, 104, 129) colored shadow looks like.

```
.shadow{ text-shadow: 4px 4px 2px rgb(228, 104, 129) }
```

Border

The CSS property to change the border of an element to CIELCh 60, 51.456, 11.178 is called "border". The border property can be set on classes, ids or directly on the HTML element.

This example shows the color as border, it can be applied via the CSS property "border" or "border-color".

```
.border, #border, table{ border:4px solid rgb(228, 104, 129) }
```

If only the border color should be changed use the property `border-color`.

```
.border{ border-color:rgb(228, 104, 129) }
```

If you want to add a box shadow in that color use:

Here you see how a box with a 4 pixel `rgb(228, 104, 129)` colored shadow looks like.

```
.boxshadow{ -moz-box-shadow:4px 4px 4px 4px rgb(228, 104, 129); -webkit-box-shadow:4px 4px 4px 4px rgb(228, 104, 129); box-shadow:4px 4px 4px 4px rgb(228, 104, 129) }
```

Background

The CSS property to change the background color of an element to CIELCh 60, 51.456, 11.178 is called "background". The background property can be set on classes, ids or directly on the HTML element.

```
.background, #background, body{  
background: rgb(228, 104, 129) }
```

If only the background color should be changed can be used:

```
.background{ background-color: rgb(228,  
104, 129) }
```

This example shows the color as background, it is applied via the CSS property "background".

To optimize and compress your CSS code, you can use our [online CSS compressor and optimizer](#) based on csstidy. If you want to create a linear or radial gradient as background or border, check our [CSS Gradient Generator](#).

Hey! You found this booklet interesting? Support Converting Colors with the new Membership Option!

The pro membership hides all ads, plus gives you double the colors in the color bucket, and more awesome pro features!

[Learn more, Memberships starting at \\$2.50/m!](#)

**Follow me
on Twitter!**

@ConvertingColor