

Converting Colors

CIELCh(60, 54.302, 17.038)

Have a look what the booklet for
CIELCh(60, 54.302, 17.038) contains.

CIELCh(60, 54.593, 17.158)	3
<i>Conversions</i>	4
<i>Details</i>	6
<i>Harmonies</i>	11
<i>Previews</i>	20
<i>Color Blindness Simulation</i>	23
<i>CSS Examples</i>	26

Color

CIELCh(60, 54.593, 17.158)

Conversions

Conversions Part 1

Format	Color
Hex	E96677
RGB	233, 102, 119
RGB Percent	91%, 40%, 47%
CMY	0.0867, 0.6003, 0.5336
CMYK	0.00, 0.56, 0.49, 0.09
HSL	352°, 75%, 66%
HSV	352°, 56%, 91%
XYZ	41.6409, 28.1233, 20.6614
YIQ	143.1070, 72.6190, 33.0590

Conversions

Conversions Part 2

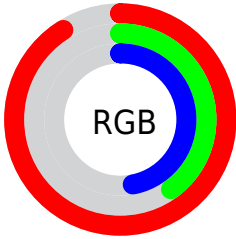
Format	Color
R _Y B	233, 102, 119
Decimal	15296119
CIE Lab	60.00, 52.16, 16.11
CIE LCh	60, 54.593, 17.158
Yxy	28.1233, 0.4605, 0.3110
Android (android.graphics.Color)	4293486199 (0xFFE96677)
YUV	143.1070, -11.8848, 78.8362
Hunter-Lab	53.0314, 47.3553, 14.0222

Details

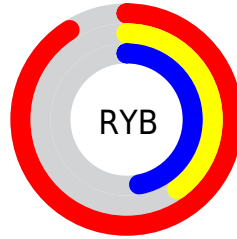
The CIELCh color **60, 54.593, 17.158** is a light color, and the websafe version is hex **CC6666**. A complement of this color would be **85, 40.120, 183.758**, and the grayscale version is **59, 0.008, 296.813**.

A 20% lighter version of the original color is **75, 39.018, 12.341**, and **40, 54.860, 17.057** is the 20% darker color. If you saturate the color by 10%, you get **56, 64.559, 20.167**, and if you desaturate by 10%, it is **65, 44.284, 14.796**.

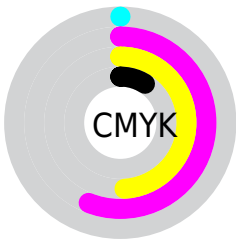
Distribution



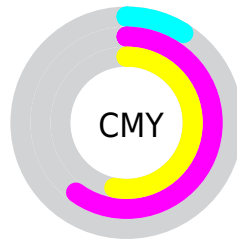
- Red (91%)
- Green (40%)
- Blue (47%)



- Red (91%)
- Yellow (40%)
- Blue (47%)



- Cyan (0%)
- Magenta (56%)
- Yellow (49%)
- Black (9%)



- Cyan (9%)
- Magenta (60%)
- Yellow (53%)

Brightness & Saturation Gradients

These gradients show how the CIELCh color 60, 54.593, 17.158 changes by changing the brightness by 10 percent. The first figure shows a shift by +10% for each color and the second figure -10%.

Similar to the brightness gradients but the following saturation gradients show a change of the CIELCh color 60, 54.593, 17.158 by changing the saturation by 10% instead.

 60, 54.593, 17.158

 60, 54.593, 17.158

 100, 54.593,
17.158

 50, 54.593, 17.158

 80, 54.593, 17.158

 40, 54.593, 17.158

 90, 54.593, 17.158

 30, 54.593, 17.158

 20, 54.593, 17.158

 10, 54.593, 17.158

 0, 54.593, 17.158

 60, 54.593, 17.158

 60, 54.593, 17.158

 56, 64.559, 20.167

 65, 44.284, 14.796

 53, 73.829, 23.930

 70, 33.993, 12.933

■ 50, 82.129, 28.426

■ 76, 23.980, 11.444

■ 49, 89.235, 33.290

■ 82, 14.412, 10.229

■ 49, 91.640, 34.939

■ 88, 5.369, 9.171

■ 95, 3.130, 188.643

■ 98, 7.553, 199.015

Harmonies

Complementary

The Complementary color scheme is a pair of colors which are on the opposite of each other on the color wheel.



60, 54.593, 17.158



85, 40.120, 183.758

Rectangle

The Rectangle color scheme consists of four colors that form a rectangle on the color wheel.



60, 54.593, 17.158



60, 54.593, 67.158



60, 54.593, 197.158



60, 54.593, 247.158

Sweetspot

The Sweet Spot groups the original color and five complimentary colors.



60, 54.590, 17.161



89, 16.280, 10.323



62, 78.404, 323.193



46, 10.956, 10.554



0, 0.000, 0.000



53, 0.007, 296.813

Same Dimension

The Same Dimension uses a secret algorithm to generate beautiful new colors.



60, 54.590, 17.161



60, 70.268, 20.540



70, 46.324, 55.230



46, 4.967, 9.509



38, 75.210, 34.123



7, 28.065, 17.390

Inverse Universe

The Inverse Universe completely reimagines the original color for something new.



60, 54.590, 17.161



60, 70.268, 20.540



72, 33.739, 249.681



46, 4.967, 9.509



38, 75.210, 34.123



7, 28.065, 17.390

Previews

White Background



This preview shows how the CIELCh color 60, 54.593, 17.158 looks on a white background.

Color Contrast Check

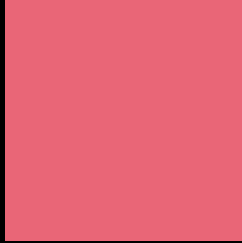
Large Text (above 18pt) WCAG AA ✓ Pass

Any Text WCAG AA ✗ Fail

Large Text (above 18pt) WCAG AAA ✗ Fail

Any Text WCAG AAA ✗ Fail

Black Background



This preview shows how the CIELCh color 60, 54.593, 17.158 looks on a black background.

Color Contrast Check

Large Text (above 18pt) WCAG AA ✓ Pass

Any Text WCAG AA ✓ Pass

Large Text (above 18pt) WCAG AAA ✓ Pass

Any Text WCAG AAA × Fail

If you want to check with other color combinations, try the [Color Contrast Checker](#).

CIELCh 60, 54.593, 17.158

Background



This preview shows how black text looks on a background with the CIELCh color 60, 54.593, 17.158.

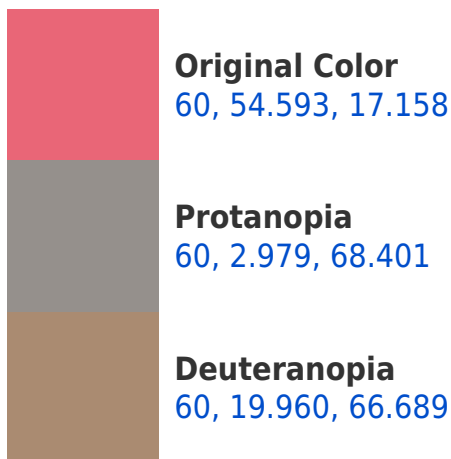


This preview shows how white text looks on a background with the CIELCh color 60, 54.593, 17.158.

Color Blindness Simulation

Color vision deficiency is a very complex topic, and I could not describe the different causes any better than Wikipedia does, so if you want to learn more, you should check out their [article about color blindness](#).

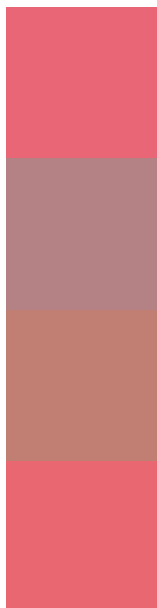
Dichromacy





Tritanopia
60, 54.789, 22.604

Trichromacy



Original Color
60, 54.593, 17.158

Protanomaly
59, 21.065, 17.151

Deuteranomaly
59, 29.806, 34.129

Tritanomaly
60, 54.412, 20.901

Monochromacy



Original Color
60, 54.593, 17.158

Achromatopsia
59, 0.008, 296.813

Achromatomaly
58, 19.870, 11.886

CSS Examples

Text

The CSS property to change the color of the text to CIELCh 60, 54.593, 17.158 is called "color". The color property can be set on classes, ids or directly on the HTML element.

This example shows how text in the color `rgb(233, 102, 119)` looks like.

```
.text, #text, p{  
    color:rgb(233, 102, 119)  
}
```

If you want to add a text shadow in that color use the text-shadow property, you can generate a text shadow directly with our [CSS Text Shadow Generator](#).

Here you see how black text with a 4 pixel rgb(233, 102, 119) colored shadow looks like.

```
.shadow{ text-shadow: 4px 4px 2px rgb(233, 102, 119) }
```

Border

The CSS property to change the border of an element to CIELCh 60, 54.593, 17.158 is called "border". The border property can be set on classes, ids or directly on the HTML element.

This example shows the color as border, it can be applied via the CSS property "border" or "border-color".

```
.border, #border, table{ border:4px solid rgb(233, 102, 119) }
```

If only the border color should be changed use the property `border-color`.

```
.border{ border-color:rgb(233, 102, 119) }
```

If you want to add a box shadow in that color use:

Here you see how a box with a 4 pixel `rgb(233, 102, 119)` colored shadow looks like.

```
.boxshadow{ -moz-box-shadow:4px 4px 4px 4px rgb(233, 102, 119); -webkit-box-shadow:4px 4px 4px 4px rgb(233, 102, 119); box-shadow:4px 4px 4px 4px rgb(233, 102, 119) }
```

Background

The CSS property to change the background color of an element to CIELCh 60, 54.593, 17.158 is called "background". The background property can be set on classes, ids or directly on the HTML element.

```
.background, #background, body{  
background: rgb(233, 102, 119) }
```

If only the background color should be changed can be used:

```
.background{ background-color: rgb(233,  
102, 119) }
```

This example shows the color as background, it is applied via the CSS property "background".

To optimize and compress your CSS code, you can use our [online CSS compressor and optimizer](#) based on csstidy. If you want to create a linear or radial gradient as background or border, check our [CSS Gradient Generator](#).

Hey! You found this booklet interesting? Support Converting Colors with the new Membership Option!

The pro membership hides all ads, plus gives you double the colors in the color bucket, and more awesome pro features!

[Learn more, Memberships starting at \\$2.50/m!](#)

**Follow me
on Twitter!**

@ConvertingColor