

Converting Colors

CIELCh(60, 55.309, 4.246)

Have a look what the booklet for
CIELCh(60, 55.309, 4.246) contains.

CIELCh(60, 55.386, 3.789)	3
<i>Conversions</i>	4
<i>Details</i>	6
<i>Harmonies</i>	11
<i>Previews</i>	20
<i>Color Blindness Simulation</i>	23
<i>CSS Examples</i>	26

Color

CIELCh(60, 55.386, 3.789)

Conversions

Conversions Part 1

Format	Color
Hex	E8638C
RGB	232, 99, 140
RGB Percent	91%, 39%, 55%
CMY	0.0886, 0.6103, 0.4496
CMYK	0.00, 0.57, 0.40, 0.09
HSL	342°, 75%, 65%
HSV	342°, 57%, 91%
XYZ	42.6696, 28.1233, 28.1266
YIQ	143.4410, 66.1070, 40.9470

Conversions

Conversions Part 2

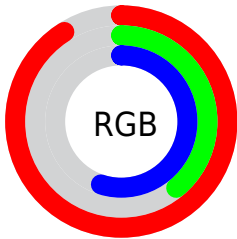
Format	Color
R _{YB}	232, 99, 140
Decimal	15229836
CIE Lab	60.00, 55.26, 3.66
CIE LCh	60, 55.386, 3.789
Yxy	28.1233, 0.4314, 0.2843
Android (android.graphics.Color)	4293419916 (0xFFE8638C)
YUV	143.4410, -1.6964, 77.6662
Hunter-Lab	53.0314, 50.8177, 5.6760

Details

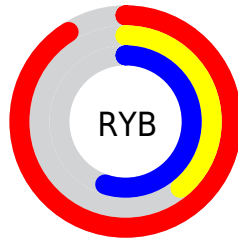
The CIELCh color **60, 55.386, 3.789** is a light color, and the websafe version is hex **FF6699**. A complement of this color would be **84, 47.010, 168.913**, and the grayscale version is **60, 0.008, 296.813**.

A 20% lighter version of the original color is **75, 42.698, 354.824**, and **40, 55.200, 3.898** is the 20% darker color. If you saturate the color by 10%, you get **56, 63.870, 6.556**, and if you desaturate by 10%, it is **65, 45.971, 1.596**.

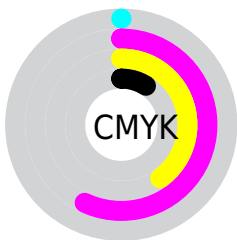
Distribution



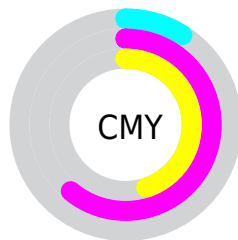
- Red (91%)
- Green (39%)
- Blue (55%)



- Red (91%)
- Yellow (39%)
- Blue (55%)



- Cyan (0%)
- Magenta (57%)
- Yellow (40%)
- Black (9%)



- Cyan (9%)
- Magenta (61%)
- Yellow (45%)

Brightness & Saturation Gradients

These gradients show how the CIELCh color 60, 55.386, 3.789 changes by changing the brightness by 10 percent. The first figure shows a shift by +10% for each color and the second figure -10%.

Similar to the brightness gradients but the following saturation gradients show a change of the CIELCh color 60, 55.386, 3.789 by changing the saturation by 10% instead.

 60, 55.386, 3.789

 60, 55.386, 3.789

 100, 55.386, 3.789

 50, 55.386, 3.789

 80, 55.386, 3.789

 40, 55.386, 3.789

 90, 55.386, 3.789

 30, 55.386, 3.789

 20, 55.386, 3.789

 10, 55.386, 3.789

 0, 55.386, 3.789

 60, 55.386, 3.789

 60, 55.386, 3.789

 56, 63.870, 6.556

 65, 45.971, 1.596

 53, 71.000, 10.069

 70, 36.085,

51, 76.546, 14.483

359.823

49, 80.713, 19.802

76, 26.090,
358.357

49, 81.831, 21.307

82, 16.240,
357.115

88, 6.687, 356.011

94, 2.487, 175.382

98, 7.836, 191.257

98, 7.718, 199.003

Harmonies

Complementary

The Complementary color scheme is a pair of colors which are on the opposite of each other on the color wheel.



60, 55.386, 3.789



84, 47.010, 168.913

Rectangle

The Rectangle color scheme consists of four colors that form a rectangle on the color wheel.



60, 55.386, 3.789



60, 55.386, 53.789



60, 55.386, 183.789



60, 55.386, 233.789

Sweetspot

The Sweet Spot groups the original color and five complimentary colors.



60, 55.383, 3.791



89, 17.260, 357.097



58, 78.090, 317.529



46, 11.587, 357.333



0, 0.000, 0.000



53, 0.007, 296.813

Same Dimension

The Same Dimension uses a secret algorithm to generate beautiful new colors.



60, 55.383, 3.791



60, 70.260, 7.230



64, 51.076, 39.005



46, 5.312, 356.254



38, 67.521, 20.296



7, 27.799, 8.898

Inverse Universe

The Inverse Universe completely reimagines the original color for something new.



60, 55.383, 3.791



60, 70.260, 7.230



78, 32.442, 221.464



46, 5.312, 356.254



38, 67.521, 20.296



7, 27.799, 8.898

Previews

White Background



This preview shows how the CIELCh color 60, 55.386, 3.789 looks on a white background.

Color Contrast Check

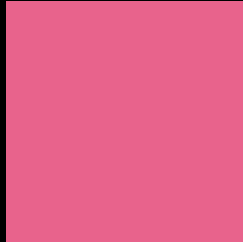
Large Text (above 18pt) WCAG AA ✓ Pass

Any Text WCAG AA ✗ Fail

Large Text (above 18pt) WCAG AAA ✗ Fail

Any Text WCAG AAA ✗ Fail

Black Background



This preview shows how the CIELCh color 60, 55.386, 3.789 looks on a black background.

Color Contrast Check

Large Text (above 18pt) WCAG AA ✓ Pass

Any Text WCAG AA ✓ Pass

Large Text (above 18pt) WCAG AAA ✓ Pass

Any Text WCAG AAA × Fail

If you want to check with other color combinations, try the [Color Contrast Checker](#).

CIELCh 60, 55.386, 3.789

Background



This preview shows how black text looks on a background with the CIELCh color 60, 55.386, 3.789.



This preview shows how white text looks on a background with the CIELCh color 60, 55.386, 3.789.

Color Blindness Simulation

Color vision deficiency is a very complex topic, and I could not describe the different causes any better than Wikipedia does, so if you want to learn more, you should check out their [article about color blindness](#).

Dichromacy



Original Color

60, 55.386, 3.789

Protanopia

60, 13.012, 286.852

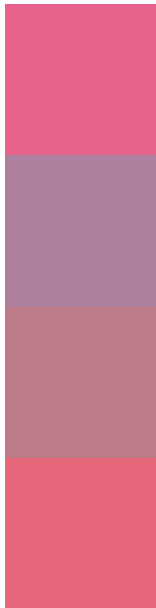
Deuteranopia

60, 9.965, 39.913



Tritanopia
60, 53.022, 22.156

Trichromacy



Original Color
60, 55.386, 3.789

Protanomaly
59, 24.041, 339.265

Deuteranomaly
59, 26.314, 9.003

Tritanomaly
60, 53.232, 15.519

Monochromacy



Original Color
60, 55.386, 3.789

Achromatopsia
60, 0.008, 296.813

Achromatomaly
59, 20.862, 357.981

CSS Examples

Text

The CSS property to change the color of the text to CIELCh 60, 55.386, 3.789 is called "color". The color property can be set on classes, ids or directly on the HTML element.

This example shows how text in the color `rgb(232, 99, 140)` looks like.

```
.text, #text, p{  
    color:rgb(232, 99, 140)  
}
```

If you want to add a text shadow in that color use the text-shadow property, you can generate a text shadow directly with our [CSS Text Shadow Generator](#).

Here you see how black text with a 4 pixel rgb(232, 99, 140) colored shadow looks like.

```
.shadow{ text-shadow: 4px 4px 2px rgb(232, 99, 140) }
```

Border

The CSS property to change the border of an element to CIELCh 60, 55.386, 3.789 is called "border". The border property can be set on classes, ids or directly on the HTML element.

This example shows the color as border, it can be applied via the CSS property "border" or "border-color".

```
.border, #border, table{ border:4px solid rgb(232, 99, 140) }
```

If only the border color should be changed use the property `border-color`.

```
.border{ border-color:rgb(232, 99, 140) }
```

If you want to add a box shadow in that color use:

Here you see how a box with a 4 pixel `rgb(232, 99, 140)` colored shadow looks like.

```
.boxshadow{ -moz-box-shadow:4px 4px 4px  
4px rgb(232, 99, 140); -webkit-box-  
shadow:4px 4px 4px 4px rgb(232, 99, 140);  
box-shadow:4px 4px 4px 4px rgb(232, 99,  
140) }
```

Background

The CSS property to change the background color of an element to CIELCh 60, 55.386, 3.789 is called "background". The background property can be set on classes, ids or directly on the HTML element.

```
.background, #background, body{  
background: rgb(232, 99, 140) }
```

If only the background color should be changed can be used:

```
.background{ background-color: rgb(232, 99,  
140) }
```

This example shows the color as background, it is applied via the CSS property "background".

To optimize and compress your CSS code, you can use our [online CSS compressor and optimizer](#) based on csstidy. If you want to create a linear or radial gradient as background or border, check our [CSS Gradient Generator](#).

Hey! You found this booklet interesting? Support Converting Colors with the new Membership Option!

The pro membership hides all ads, plus gives you double the colors in the color bucket, and more awesome pro features!

[Learn more, Memberships starting at \\$2.50/m!](#)

**Follow me
on Twitter!**

@ConvertingColor