

Converting Colors

CIELCh(60, 62.447, 11.000)

Have a look what the booklet for
CIELCh(60, 62.447, 11.000) contains.

CIELCh(60, 62.415, 10.927)	3
<i>Conversions</i>	4
<i>Details</i>	6
<i>Harmonies</i>	11
<i>Previews</i>	20
<i>Color Blindness Simulation</i>	23
<i>CSS Examples</i>	26

Color

CIELCh(60, 62.415, 10.927)

Conversions

Conversions Part 1

Format	Color
Hex	F45B7F
RGB	244, 91, 127
RGB Percent	96%, 36%, 50%
CMY	0.0445, 0.6444, 0.5031
CMYK	0.00, 0.63, 0.48, 0.04
HSL	346°, 87%, 66%
HSV	346°, 63%, 96%
XYZ	44.7137, 28.1233, 23.0533
YIQ	140.8510, 79.6320, 43.6320

Conversions

Conversions Part 2

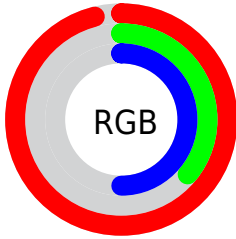
Format	Color
R _Y B	244, 91, 127
Decimal	16014207
CIE Lab	60.00, 61.28, 11.83
CIE LCh	60, 62.415, 10.927
Yxy	28.1233, 0.4663, 0.2933
Android (android.graphics.Color)	4294204287 (0xFFFF45B7F)
YUV	140.8510, -6.8285, 90.4617
Hunter-Lab	53.0314, 57.6980, 11.3480

Details

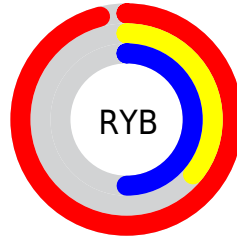
The CIELCh color **60, 62.415, 10.927** is a light color, and the websafe version is hex **FF6699**. The color can be described as light muted rose. A complement of this color would be **88, 49.046, 173.602**, and the grayscale version is **58, 0.007, 296.813**.

A 20% lighter version of the original color is **73, 43.862, 1.296**, and **40, 62.631, 11.161** is the 20% darker color. If you saturate the color by 10%, you get **56, 71.109, 14.341**, and if you desaturate by 10%, it is **65, 52.733, 8.241**.

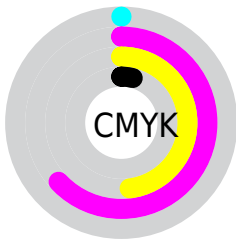
Distribution



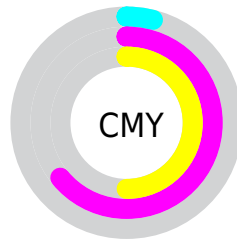
- Red (96%)
- Green (36%)
- Blue (50%)



- Red (96%)
- Yellow (36%)
- Blue (50%)



- Cyan (0%)
- Magenta (63%)
- Yellow (48%)
- Black (4%)



- Cyan (4%)
- Magenta (64%)
- Yellow (50%)


Brightness & Saturation Gradients

These gradients show how the CIELCh color 60, 62.415, 10.927 changes by changing the brightness by 10 percent. The first figure shows a shift by +10% for each color and the second figure -10%.

Similar to the brightness gradients but the following saturation gradients show a change of the CIELCh color 60, 62.415, 10.927 by changing the saturation by 10% instead.

 60, 62.415, 10.927

 60, 62.415, 10.927

 100, 62.415,
10.927

 50, 62.415, 10.927

 80, 62.415, 10.927

 40, 62.415, 10.927

 90, 62.415, 10.927

 30, 62.415, 10.927

 20, 62.415, 10.927

 10, 62.415, 10.927

 0, 62.415, 10.927

 60, 62.415, 10.927

 60, 62.415, 10.927

 56, 71.109, 14.341

 65, 52.733, 8.241

 54, 78.510, 18.616

 70, 42.508, 6.111

52, 84.601, 23.757

75, 32.135, 4.396

51, 88.506, 27.734

82, 21.908, 2.985

88, 12.014, 1.789

94, 2.552, 0.610

99, 3.918, 199.326

Harmonies

Complementary

The Complementary color scheme is a pair of colors which are on the opposite of each other on the color wheel.



60, 62.415, 10.927



88, 49.046, 173.602

Rectangle

The Rectangle color scheme consists of four colors that form a rectangle on the color wheel.



60, 62.415, 10.927



60, 62.415, 60.927



60, 62.415, 190.927



60, 62.415, 240.927

Sweetspot

The Sweet Spot groups the original color and five complimentary colors.



60, 62.411, 10.929



87, 18.806, 2.518



59, 88.400, 319.714



45, 13.025, 2.874



0, 0.000, 0.000



53, 0.007, 296.813

Same Dimension

The Same Dimension uses a secret algorithm to generate beautiful new colors.



60, 62.411, 10.929



58, 75.573, 15.286



66, 57.278, 44.662



48, 5.321, 1.426



39, 71.740, 26.701



9, 29.866, 14.957

Inverse Universe

The Inverse Universe completely reimagines the original color for something new.



60, 62.411, 10.929



58, 75.573, 15.286



78, 35.536, 233.284



48, 5.321, 1.426



39, 71.740, 26.701



9, 29.866, 14.957

Previews

White Background



This preview shows how the CIELCh color 60, 62.415, 10.927 looks on a white background.

Color Contrast Check

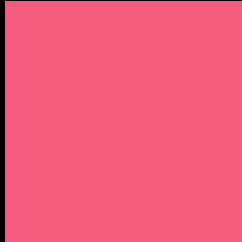
Large Text (above 18pt) WCAG AA ✓ Pass

Any Text WCAG AA ✗ Fail

Large Text (above 18pt) WCAG AAA ✗ Fail

Any Text WCAG AAA ✗ Fail

Black Background



This preview shows how the CIELCh color 60, 62.415, 10.927 looks on a black background.

Color Contrast Check

Large Text (above 18pt) WCAG AA ✓ Pass

Any Text WCAG AA ✓ Pass

Large Text (above 18pt) WCAG AAA ✓ Pass

Any Text WCAG AAA × Fail

If you want to check with other color combinations, try the [Color Contrast Checker](#).

CIELCh 60, 62.415, 10.927

Background



This preview shows how black text looks on a background with the CIELCh color 60, 62.415, 10.927.

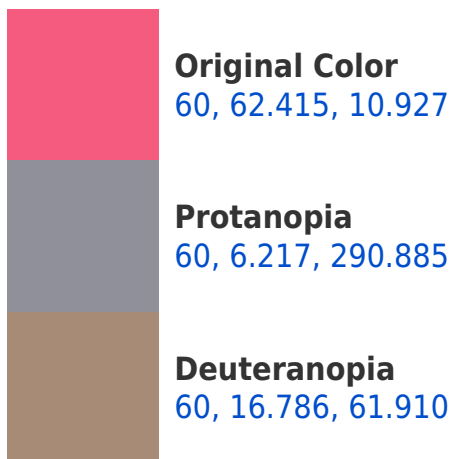


This preview shows how white text looks on a background with the CIELCh color 60, 62.415, 10.927.

Color Blindness Simulation

Color vision deficiency is a very complex topic, and I could not describe the different causes any better than Wikipedia does, so if you want to learn more, you should check out their [article about color blindness](#).

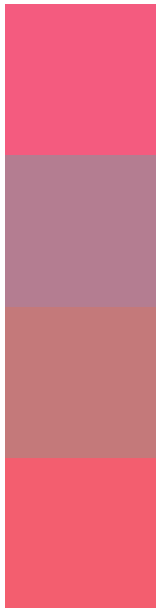
Dichromacy





Tritanopia
60, 62.311, 24.863

Trichromacy



Original Color
60, 62.415, 10.927

Protanomaly
58, 24.441, 354.928

Deuteranomaly
59, 31.716, 22.021

Tritanomaly
60, 62.067, 19.824

Monochromacy



Original Color
60, 62.415, 10.927

Achromatopsia
59, 0.008, 296.813

Achromatomaly
57, 23.374, 3.959

CSS Examples

Text

The CSS property to change the color of the text to CIELCh 60, 62.415, 10.927 is called "color". The color property can be set on classes, ids or directly on the HTML element.

This example shows how text in the color `rgb(244, 91, 127)` looks like.

```
.text, #text, p{  
    color:rgb(244, 91, 127)  
}
```

If you want to add a text shadow in that color use the text-shadow property, you can generate a text shadow directly with our [CSS Text Shadow Generator](#).

Here you see how black text with a 4 pixel rgb(244, 91, 127) colored shadow looks like.

```
.shadow{ text-shadow: 4px 4px 2px rgb(244, 91, 127) }
```

Border

The CSS property to change the border of an element to CIELCh 60, 62.415, 10.927 is called "border". The border property can be set on classes, ids or directly on the HTML element.

This example shows the color as border, it can be applied via the CSS property "border" or "border-color".

```
.border, #border, table{ border:4px solid rgb(244, 91, 127) }
```

If only the border color should be changed use the property `border-color`.

```
.border{ border-color:rgb(244, 91, 127) }
```

If you want to add a box shadow in that color use:

Here you see how a box with a 4 pixel `rgb(244, 91, 127)` colored shadow looks like.

```
.boxshadow{ -moz-box-shadow:4px 4px 4px  
4px rgb(244, 91, 127); -webkit-box-  
shadow:4px 4px 4px 4px rgb(244, 91, 127);  
box-shadow:4px 4px 4px 4px rgb(244, 91,  
127) }
```

Background

The CSS property to change the background color of an element to CIELCh 60, 62.415, 10.927 is called "background". The background property can be set on classes, ids or directly on the HTML element.

```
.background, #background, body{  
background: rgb(244, 91, 127) }
```

If only the background color should be changed can be used:

```
.background{ background-color: rgb(244, 91,  
127) }
```

This example shows the color as background, it is applied via the CSS property "background".

To optimize and compress your CSS code, you can use our [online CSS compressor and optimizer](#) based on csstidy. If you want to create a linear or radial gradient as background or border, check our [CSS Gradient Generator](#).

Hey! You found this booklet interesting? Support Converting Colors with the new Membership Option!

The pro membership hides all ads, plus gives you double the colors in the color bucket, and more awesome pro features!

[Learn more, Memberships starting at \\$2.50/m!](#)

**Follow me
on Twitter!**

@ConvertingColor