

Converting Colors

CIELCh(60, 66.359, 17.431)

Have a look what the booklet for
CIELCh(60, 66.359, 17.431) contains.

CIELCh(60, 66.403, 17.512)	3
<i>Conversions</i>	4
<i>Details</i>	6
<i>Harmonies</i>	11
<i>Previews</i>	20
<i>Color Blindness Simulation</i>	23
<i>CSS Examples</i>	26

Color

CIELCh(60, 66.403, 17.512)

Conversions

Conversions Part 1

Format	Color
Hex	F95771
RGB	249, 87, 113
RGB Percent	98%, 34%, 44%
CMY	0.0238, 0.6590, 0.5571
CMYK	0.00, 0.65, 0.55, 0.02
HSL	350°, 93%, 66%
HSV	350°, 65%, 98%
XYZ	45.4218, 28.1233, 18.6409
YIQ	138.4020, 88.2060, 42.4300

Conversions

Conversions Part 2

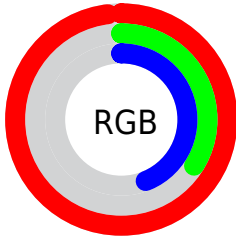
Format	Color
R _Y B	249, 87, 113
Decimal	16340849
CIE Lab	60.00, 63.33, 19.98
CIE LCh	60, 66.403, 17.512
Yxy	28.1233, 0.4927, 0.3051
Android (android.graphics.Color)	4294530929 (0xFFFF95771)
YUV	138.4020, -12.5232, 96.9944
Hunter-Lab	53.0314, 60.0815, 16.2812

Details

The CIELCh color **60, 66.403, 17.512** is a light color, and the websafe version is hex **FF6666**. The color can be described as light muted rose. A complement of this color would be **89, 47.855, 179.852**, and the grayscale version is **58, 0.007, 296.813**.

A 20% lighter version of the original color is **72, 44.685, 9.773**, and **40, 66.508, 17.350** is the 20% darker color. If you saturate the color by 10%, you get **56, 75.861, 21.227**, and if you desaturate by 10%, it is **64, 56.125, 14.569**.

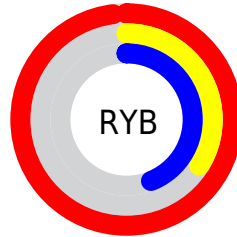
Distribution



Red (98%)

Green (34%)

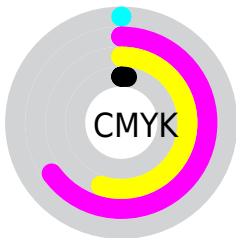
Blue (44%)



Red (98%)

Yellow (34%)

Blue (44%)

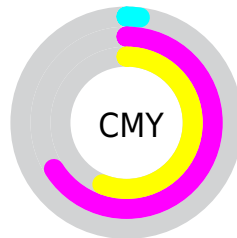


Cyan (0%)

Magenta (65%)

Yellow (55%)

Black (2%)



Cyan (2%)

Magenta (66%)

Yellow (56%)


Brightness & Saturation Gradients

These gradients show how the CIELCh color 60, 66.403, 17.512 changes by changing the brightness by 10 percent. The first figure shows a shift by +10% for each color and the second figure -10%.

Similar to the brightness gradients but the following saturation gradients show a change of the CIELCh color 60, 66.403, 17.512 by changing the saturation by 10% instead.

 60, 66.403, 17.512

 60, 66.403, 17.512

 100, 66.403,
17.512

 50, 66.403, 17.512

 80, 66.403, 17.512

 40, 66.403, 17.512

 90, 66.403, 17.512

 30, 66.403, 17.512

 20, 66.403, 17.512

 10, 66.403, 17.512

 0, 66.403, 17.512

 60, 66.403, 17.512

 60, 66.403, 17.512

 56, 75.861, 21.227

 64, 56.125, 14.569

 54, 84.236, 25.748

 70, 45.430, 12.252

■ 53, 91.433, 30.843

■ 75, 34.698, 10.416

■ 52, 94.639, 33.268

■ 82, 24.217, 8.938

■ 88, 14.165, 7.717

■ 95, 4.631, 6.626

■ 100, 2.106,
199.586

Harmonies

Complementary

The Complementary color scheme is a pair of colors which are on the opposite of each other on the color wheel.



60, 66.403, 17.512



89, 47.855, 179.852

Rectangle

The Rectangle color scheme consists of four colors that form a rectangle on the color wheel.



60, 66.403, 17.512



60, 66.403, 67.512



60, 66.403, 197.512



60, 66.403, 247.512

Sweetspot

The Sweet Spot groups the original color and five complimentary colors.



60, 66.400, 17.514



87, 19.434, 8.295



61, 93.017, 322.356



44, 13.360, 8.646



0, 0.000, 0.000



53, 0.007, 296.813

Same Dimension

The Same Dimension uses a secret algorithm to generate beautiful new colors.



60, 66.400, 17.514



57, 79.964, 22.514



69, 58.774, 51.686



49, 5.273, 7.110



39, 76.134, 32.341



9, 31.186, 19.553

Inverse Universe

The Inverse Universe completely reimagines the original color for something new.



60, 66.400, 17.514



57, 79.964, 22.514



75, 38.725, 247.510



49, 5.273, 7.110



39, 76.134, 32.341



9, 31.186, 19.553

Previews

White Background



This preview shows how the CIELCh color 60, 66.403, 17.512 looks on a white background.

Color Contrast Check

Large Text (above 18pt) WCAG AA ✓ Pass

Any Text WCAG AA ✗ Fail

Large Text (above 18pt) WCAG AAA ✗ Fail

Any Text WCAG AAA ✗ Fail

Black Background



This preview shows how the CIELCh color 60, 66.403, 17.512 looks on a black background.

Color Contrast Check

Large Text (above 18pt) WCAG AA ✓ Pass

Any Text WCAG AA ✓ Pass

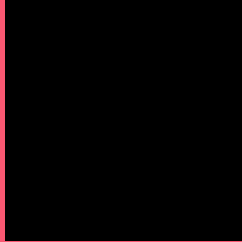
Large Text (above 18pt) WCAG AAA ✓ Pass

Any Text WCAG AAA × Fail

If you want to check with other color combinations, try the [Color Contrast Checker](#).

CIELCh 60, 66.403, 17.512

Background



This preview shows how black text looks on a background with the CIELCh color 60, 66.403, 17.512.

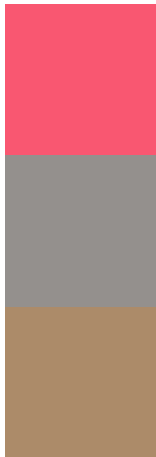


This preview shows how white text looks on a background with the CIELCh color 60, 66.403, 17.512.

Color Blindness Simulation

Color vision deficiency is a very complex topic, and I could not describe the different causes any better than Wikipedia does, so if you want to learn more, you should check out their [article about color blindness](#).

Dichromacy



Original Color

60, 66.403, 17.512

Protanopia

60, 2.294, 66.665

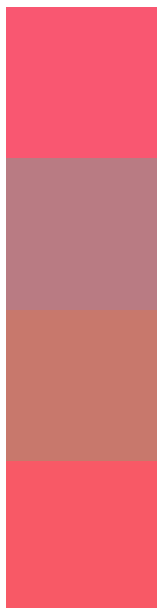
Deuteranopia

60, 24.178, 71.392



Tritanopia
60, 67.531, 26.108

Trichromacy



Original Color
60, 66.403, 17.512

Protanomaly
58, 25.865, 12.477

Deuteranomaly
59, 35.989, 33.716

Tritanomaly
60, 66.794, 23.107

Monochromacy



Original Color
60, 66.403, 17.512

Achromatopsia
57, 0.007, 296.813

Achromatomaly
56, 24.852, 9.316

CSS Examples

Text

The CSS property to change the color of the text to CIELCh 60, 66.403, 17.512 is called "color". The color property can be set on classes, ids or directly on the HTML element.

This example shows how text in the color `rgb(249, 87, 113)` looks like.

```
.text, #text, p{  
    color:rgb(249, 87, 113)  
}
```

If you want to add a text shadow in that color use the text-shadow property, you can generate a text shadow directly with our [CSS Text Shadow Generator](#).

Here you see how black text with a 4 pixel rgb(249, 87, 113) colored shadow looks like.

```
.shadow{ text-shadow: 4px 4px 2px rgb(249, 87, 113) }
```

Border

The CSS property to change the border of an element to CIELCh 60, 66.403, 17.512 is called "border". The border property can be set on classes, ids or directly on the HTML element.

This example shows the color as border, it can be applied via the CSS property "border" or "border-color".

```
.border, #border, table{ border:4px solid rgb(249, 87, 113) }
```

If only the border color should be changed use the property `border-color`.

```
.border{ border-color:rgb(249, 87, 113) }
```

If you want to add a box shadow in that color use:

Here you see how a box with a 4 pixel `rgb(249, 87, 113)` colored shadow looks like.

```
.boxshadow{ -moz-box-shadow:4px 4px 4px  
4px rgb(249, 87, 113); -webkit-box-  
shadow:4px 4px 4px 4px rgb(249, 87, 113);  
box-shadow:4px 4px 4px 4px rgb(249, 87,  
113) }
```

Background

The CSS property to change the background color of an element to CIELCh 60, 66.403, 17.512 is called "background". The background property can be set on classes, ids or directly on the HTML element.

```
.background, #background, body{  
background: rgb(249, 87, 113) }
```

If only the background color should be changed can be used:

```
.background{ background-color: rgb(249, 87,  
113) }
```

This example shows the color as background, it is applied via the CSS property "background".

To optimize and compress your CSS code, you can use our [online CSS compressor and optimizer](#) based on csstidy. If you want to create a linear or radial gradient as background or border, check our [CSS Gradient Generator](#).

Hey! You found this booklet interesting? Support Converting Colors with the new Membership Option!

The pro membership hides all ads, plus gives you double the colors in the color bucket, and more awesome pro features!

[Learn more, Memberships starting at \\$2.50/m!](#)

**Follow me
on Twitter!**

@ConvertingColor