

Converting Colors

CIELCh(60, 72.340, 20.290)

Have a look what the booklet for
CIELCh(60, 72.340, 20.290) contains.

CIELCh(60, 71.908, 19.896)	3
<i>Conversions</i>	4
<i>Details</i>	6
<i>Harmonies</i>	11
<i>Previews</i>	20
<i>Color Blindness Simulation</i>	23
<i>CSS Examples</i>	26

Color

CIELCh(60, 71.908, 19.896)

Conversions

Conversions Part 1

Format	Color
Hex	FF506A
RGB	255, 80, 106
RGB Percent	100%, 31%, 42%
CMY	0.0000, 0.6874, 0.5860
CMYK	0.00, 0.69, 0.59, 0.00
HSL	351°, 100%, 66%
HSV	351°, 69%, 100%
XYZ	46.9339, 28.1233, 16.4699
YIQ	135.2890, 95.9540, 45.1860

Conversions

Conversions Part 2

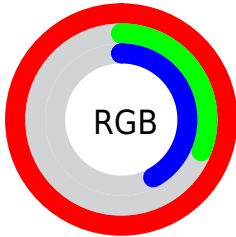
Format	Color
R_{YB}	255, 80, 106
Decimal	16732266
CIE _{Lab}	60.00, 67.62, 24.47
CIE _{LCh}	60, 71.908, 19.896
Yxy	28.1233, 0.5128, 0.3073
Android (android.graphics.Color)	4294922346 (0xFFFF506A)
YUV	135.2890, -14.4395, 104.9865
Hunter-Lab	53.0314, 65.1710, 18.7084

Details

The CIELCh color **60, 71.908, 19.896** is a dark color, and the websafe version is hex **FF3366**. The color can be described as middle muted rose. A complement of this color would be **91, 49.901, 180.638**, and the grayscale version is **56, 0.007, 296.813**.

A 20% lighter version of the original color is **71, 46.793, 12.757**, and **40, 70.651, 20.618** is the 20% darker color. If you saturate the color by 10%, you get **57, 81.079, 23.838**, and if you desaturate by 10%, it is **64, 61.283, 16.588**.

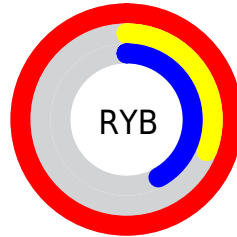
Distribution



Red (100%)

Green (31%)

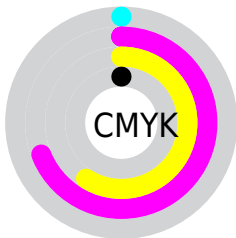
Blue (42%)



Red (100%)

Yellow (31%)

Blue (42%)

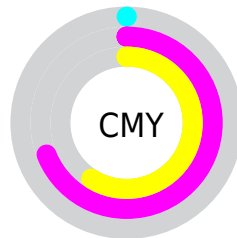


Cyan (0%)

Magenta (69%)

Yellow (59%)

Black (0%)



Cyan (0%)

Magenta (69%)

Yellow (59%)


Brightness & Saturation Gradients

These gradients show how the CIELCh color 60, 71.908, 19.896 changes by changing the brightness by 10 percent. The first figure shows a shift by +10% for each color and the second figure -10%.

Similar to the brightness gradients but the following saturation gradients show a change of the CIELCh color 60, 71.908, 19.896 by changing the saturation by 10% instead.

 60, 71.908, 19.896

 60, 71.908, 19.896

 100, 71.908,
19.896

 50, 71.908, 19.896

 80, 71.908, 19.896

 40, 71.908, 19.896

 90, 71.908, 19.896

 30, 71.908, 19.896

 20, 71.908, 19.896

 10, 71.908, 19.896

 0, 71.908, 19.896

 60, 71.908, 19.896

 60, 71.908, 19.896

 57, 81.079, 23.838

 64, 61.283, 16.588

 55, 89.386, 28.592

 69, 50.391, 14.047

■ 53, 96.456, 33.589

■ 75, 39.363, 12.046

■ 53, 97.294, 34.152

■ 81, 28.526, 10.450

■ 87, 18.098, 9.152

■ 94, 8.195, 8.050

100, 0.012,
296.813

Harmonies

Complementary

The Complementary color scheme is a pair of colors which are on the opposite of each other on the color wheel.



60, 71.908, 19.896



91, 49.901, 180.638

Rectangle

The Rectangle color scheme consists of four colors that form a rectangle on the color wheel.



60, 71.908, 19.896



60, 71.908, 69.896



60, 71.908, 199.896



60, 71.908, 249.896

Sweetspot

The Sweet Spot groups the original color and five complimentary colors.



60, 71.637, 19.816



86, 20.411, 9.424



61, 98.886, 322.935



44, 13.922, 9.772



0, 0.000, 0.000



53, 0.007, 296.813

Same Dimension

The Same Dimension uses a secret algorithm to generate beautiful new colors.



60, 71.637, 19.816



56, 83.918, 25.319



70, 63.645, 52.961



50, 5.343, 8.130



40, 77.608, 33.240



10, 32.295, 21.126

Inverse Universe

The Inverse Universe completely reimagines the original color for something new.



60, 71.637, 19.816



56, 83.918, 25.319



74, 41.740, 251.436



50, 5.343, 8.130



40, 77.608, 33.240



10, 32.295, 21.126

Previews

White Background



This preview shows how the CIELCh color 60, 71.908, 19.896 looks on a white background.

Color Contrast Check

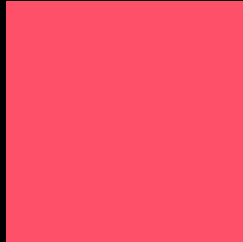
Large Text (above 18pt) WCAG AA ✓ Pass

Any Text WCAG AA ✗ Fail

Large Text (above 18pt) WCAG AAA ✗ Fail

Any Text WCAG AAA ✗ Fail

Black Background



This preview shows how the CIELCh color 60, 71.908, 19.896 looks on a black background.

Color Contrast Check

Large Text (above 18pt) WCAG AA ✓ Pass

Any Text WCAG AA ✓ Pass

Large Text (above 18pt) WCAG AAA ✓ Pass

Any Text WCAG AAA × Fail

If you want to check with other color combinations, try the [Color Contrast Checker](#).

CIELCh 60, 71.908, 19.896

Background



This preview shows how black text looks on a background with the CIELCh color 60, 71.908, 19.896.

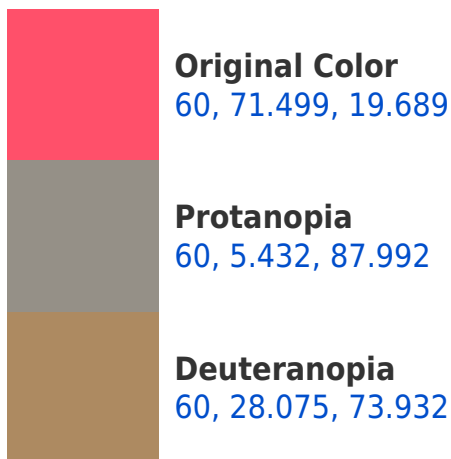


This preview shows how white text looks on a background with the CIELCh color 60, 71.908, 19.896.

Color Blindness Simulation

Color vision deficiency is a very complex topic, and I could not describe the different causes any better than Wikipedia does, so if you want to learn more, you should check out their [article about color blindness](#).

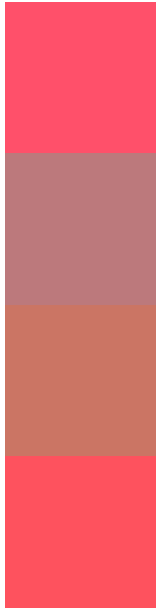
Dichromacy





Tritanopia
60, 73.350, 27.891

Trichromacy



Original Color
60, 71.499, 19.689

Protanomaly
58, 28.146, 19.245

Deuteranomaly
58, 39.972, 36.955

Tritanomaly
60, 72.432, 25.197

Monochromacy



Original Color
60, 71.499, 19.689

Achromatopsia
56, 0.007, 296.813

Achromatomaly
55, 27.018, 11.926

CSS Examples

Text

The CSS property to change the color of the text to CIELCh 60, 71.908, 19.896 is called "color". The color property can be set on classes, ids or directly on the HTML element.

This example shows how text in the color `rgb(255, 80, 106)` looks like.

```
.text, #text, p{  
    color:rgb(255, 80, 106)  
}
```

If you want to add a text shadow in that color use the text-shadow property, you can generate a text shadow directly with our [CSS Text Shadow Generator](#).

Here you see how black text with a 4 pixel rgb(255, 80, 106) colored shadow looks like.

```
.shadow{ text-shadow: 4px 4px 2px rgb(255, 80, 106) }
```

Border

The CSS property to change the border of an element to CIELCh 60, 71.908, 19.896 is called "border". The border property can be set on classes, ids or directly on the HTML element.

This example shows the color as border, it can be applied via the CSS property "border" or "border-color".

```
.border, #border, table{ border:4px solid rgb(255, 80, 106) }
```

If only the border color should be changed use the property `border-color`.

```
.border{ border-color:rgb(255, 80, 106) }
```

If you want to add a box shadow in that color use:

Here you see how a box with a 4 pixel `rgb(255, 80, 106)` colored shadow looks like.

```
.boxshadow{ -moz-box-shadow:4px 4px 4px 4px rgb(255, 80, 106); -webkit-box-shadow:4px 4px 4px 4px rgb(255, 80, 106); box-shadow:4px 4px 4px 4px rgb(255, 80, 106) }
```

Background

The CSS property to change the background color of an element to CIELCh 60, 71.908, 19.896 is called "background". The background property can be set on classes, ids or directly on the HTML element.

```
.background, #background, body{  
background: rgb(255, 80, 106) }
```

If only the background color should be changed can be used:

```
.background{ background-color: rgb(255, 80,  
106) }
```

This example shows the color as background, it is applied via the CSS property "background".

To optimize and compress your CSS code, you can use our [online CSS compressor and optimizer](#) based on csstidy. If you want to create a linear or radial gradient as background or border, check our [CSS Gradient Generator](#).

Hey! You found this booklet interesting? Support Converting Colors with the new Membership Option!

The pro membership hides all ads, plus gives you double the colors in the color bucket, and more awesome pro features!

[Learn more, Memberships starting at \\$2.50/m!](#)

**Follow me
on Twitter!**

@ConvertingColor