

Converting Colors

CIELCh(60, 72.800, 3.065)

Have a look what the booklet for
CIELCh(60, 72.800, 3.065) contains.

CIELCh(60, 72.539, 2.779)	3
<i>Conversions</i>	4
<i>Details</i>	6
<i>Harmonies</i>	11
<i>Previews</i>	20
<i>Color Blindness Simulation</i>	23
<i>CSS Examples</i>	26

Color

CIELCh(60, 72.539, 2.779)

Conversions

Conversions Part 1

Format	Color
Hex	FF4A8D
RGB	255, 74, 141
RGB Percent	100%, 29%, 55%
CMY	0.0000, 0.7117, 0.4455
CMYK	0.00, 0.71, 0.45, 0.00
HSL	338°, 100%, 64%
HSV	338°, 71%, 100%
XYZ	48.6786, 28.1233, 28.2215
YIQ	135.7570, 86.3690, 59.2090

Conversions

Conversions Part 2

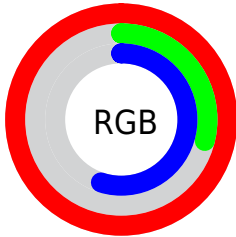
Format	Color
R_{YB}	255, 74, 141
Decimal	16730765
CIE _{Lab}	60.00, 72.45, 3.52
CIE _{LCh}	60, 72.539, 2.779
Yxy	28.1233, 0.4635, 0.2678
Android (android.graphics.Color)	4294920845 (0xFFFF4A8D)
YUV	135.7570, 2.5848, 104.5761
Hunter-Lab	53.0314, 71.0437, 5.5699

Details

The CIELCh color **60, 72.539, 2.779** is a light color, and the websafe version is hex **FF6699**. The color can be described as light washed rose. A complement of this color would be **90, 63.608, 162.072**, and the grayscale version is **56, 0.007, 296.813**.

A 20% lighter version of the original color is **71, 53.135, 349.172**, and **41, 68.498, 4.883** is the 20% darker color. If you saturate the color by 10%, you get **57, 78.683, 6.233**, and if you desaturate by 10%, it is **64, 64.225, 359.888**.

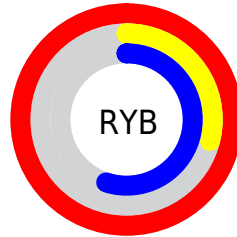
Distribution



Red (100%)

Green (29%)

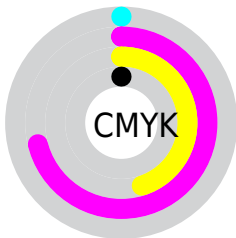
Blue (55%)



Red (100%)

Yellow (29%)

Blue (55%)

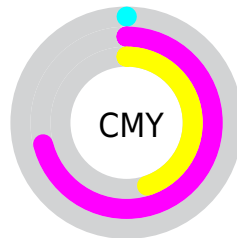


Cyan (0%)

Magenta (71%)

Yellow (45%)

Black (0%)



Cyan (0%)

Magenta (71%)

Yellow (45%)

Brightness & Saturation Gradients

These gradients show how the CIELCh color 60, 72.539, 2.779 changes by changing the brightness by 10 percent. The first figure shows a shift by +10% for each color and the second figure -10%.

Similar to the brightness gradients but the following saturation gradients show a change of the CIELCh color 60, 72.539, 2.779 by changing the saturation by 10% instead.

 60, 72.539, 2.779

 60, 72.539, 2.779

 100, 72.539, 2.779

 50, 72.539, 2.779

 80, 72.539, 2.779

 40, 72.539, 2.779

 90, 72.539, 2.779

 30, 72.539, 2.779

 20, 72.539, 2.779


 10, 72.539, 2.779

 0, 72.539, 2.779

 60, 72.539, 2.779

 60, 72.539, 2.779

 57, 78.683, 6.233

 64, 64.225,
359.888

 55, 82.973, 10.711

■ 54, 85.589, 15.366

■ 69, 54.632,
357.676

■ 74, 44.157,
355.887

■ 80, 33.278,
354.405

■ 86, 22.352,
353.147

■ 93, 11.613,
352.045

■ 99, 1.196, 350.690

■ 100, 0.012,
296.813

Harmonies

Complementary

The Complementary color scheme is a pair of colors which are on the opposite of each other on the color wheel.



60, 72.539, 2.779



90, 63.608, 162.072

Rectangle

The Rectangle color scheme consists of four colors that form a rectangle on the color wheel.



60, 72.539, 2.779



60, 72.539, 52.779



60, 72.539, 182.779



60, 72.539, 232.779

Sweetspot

The Sweet Spot groups the original color and five complimentary colors.



60, 72.393, 2.680



86, 22.173, 353.128



54, 101.504, 315.771



44, 15.061, 353.456



0, 0.000, 0.000



53, 0.007, 296.813

Same Dimension

The Same Dimension uses a secret algorithm to generate beautiful new colors.



60, 72.393, 2.680



56, 80.555, 7.835



62, 74.441, 36.567



50, 5.897, 351.871



41, 68.724, 14.322



10, 31.283, 7.005

Inverse Universe

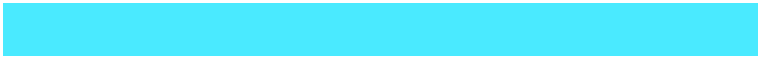
The Inverse Universe completely reimagines the original color for something new.



60, 72.393, 2.680



56, 80.555, 7.835



86, 40.783, 213.008



50, 5.897, 351.871



41, 68.724, 14.322



10, 31.283, 7.005

Previews

White Background



This preview shows how the CIELCh color 60, 72.539, 2.779 looks on a white background.

Color Contrast Check

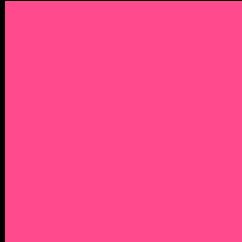
Large Text (above 18pt) WCAG AA ✓ Pass

Any Text WCAG AA ✗ Fail

Large Text (above 18pt) WCAG AAA ✗ Fail

Any Text WCAG AAA ✗ Fail

Black Background



This preview shows how the CIELCh color 60, 72.539, 2.779 looks on a black background.

Color Contrast Check

Large Text (above 18pt) WCAG AA ✓ Pass

Any Text WCAG AA ✓ Pass

Large Text (above 18pt) WCAG AAA ✓ Pass

Any Text WCAG AAA × Fail

If you want to check with other color combinations, try the [Color Contrast Checker](#).

CIELCh 60, 72.539, 2.779

Background



This preview shows how black text looks on a background with the CIELCh color 60, 72.539, 2.779.

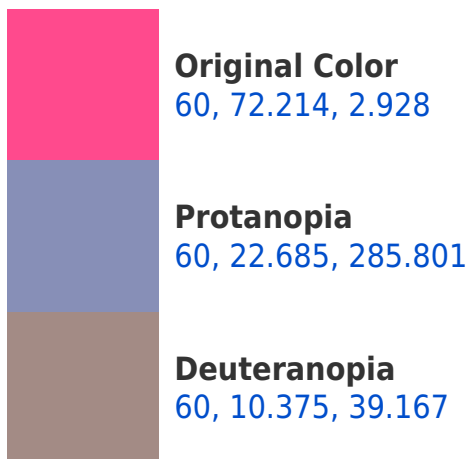


This preview shows how white text looks on a background with the CIELCh color 60, 72.539, 2.779.

Color Blindness Simulation

Color vision deficiency is a very complex topic, and I could not describe the different causes any better than Wikipedia does, so if you want to learn more, you should check out their [article about color blindness](#).

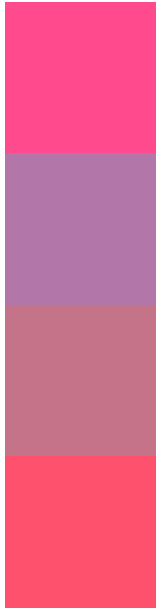
Dichromacy





Tritanopia
60, 71.377, 27.762

Trichromacy



Original Color
60, 72.214, 2.928

Protanomaly
57, 36.037, 331.981

Deuteranomaly
58, 34.505, 3.978

Tritanomaly
60, 70.124, 18.357

Monochromacy



Original Color
60, 72.214, 2.928

Achromatopsia
57, 0.007, 296.813

Achromatomaly
55, 29.691, 354.783

CSS Examples

Text

The CSS property to change the color of the text to CIELCh 60, 72.539, 2.779 is called "color". The color property can be set on classes, ids or directly on the HTML element.

This example shows how text in the color `rgb(255, 74, 141)` looks like.

```
.text, #text, p{  
    color:rgb(255, 74, 141)  
}
```

If you want to add a text shadow in that color use the text-shadow property, you can generate a text shadow directly with our [CSS Text Shadow Generator](#).

Here you see how black text with a 4 pixel rgb(255, 74, 141) colored shadow looks like.

```
.shadow{ text-shadow: 4px 4px 2px rgb(255, 74, 141) }
```

Border

The CSS property to change the border of an element to CIELCh 60, 72.539, 2.779 is called "border". The border property can be set on classes, ids or directly on the HTML element.

This example shows the color as border, it can be applied via the CSS property "border" or "border-color".

```
.border, #border, table{ border:4px solid rgb(255, 74, 141) }
```

If only the border color should be changed use the property border-color.

```
.border{ border-color:rgb(255, 74, 141) }
```

If you want to add a box shadow in that color use:

Here you see how a box with a 4 pixel rgb(255, 74, 141) colored shadow looks like.

```
.boxshadow{ -moz-box-shadow:4px 4px 4px  
4px rgb(255, 74, 141); -webkit-box-  
shadow:4px 4px 4px 4px rgb(255, 74, 141);  
box-shadow:4px 4px 4px 4px rgb(255, 74,  
141) }
```

Background

The CSS property to change the background color of an element to CIELCh 60, 72.539, 2.779 is called "background". The background property can be set on classes, ids or directly on the HTML element.

```
.background, #background, body{  
background: rgb(255, 74, 141) }
```

If only the background color should be changed can be used:

```
.background{ background-color: rgb(255, 74,  
141) }
```

This example shows the color as background, it is applied via the CSS property "background".

To optimize and compress your CSS code, you can use our [online CSS compressor and optimizer](#) based on csstidy. If you want to create a linear or radial gradient as background or border, check our [CSS Gradient Generator](#).

Hey! You found this booklet interesting? Support Converting Colors with the new Membership Option!

The pro membership hides all ads, plus gives you double the colors in the color bucket, and more awesome pro features!

[Learn more, Memberships starting at \\$2.50/m!](#)

**Follow me
on Twitter!**

@ConvertingColor