

Converting Colors

CIELCh(60, 81.733, 18.152)

Have a look what the booklet for
CIELCh(60, 81.733, 18.152) contains.

CIELCh(57, 77.064, 16.124)	3
<i>Conversions</i>	4
<i>Details</i>	6
<i>Harmonies</i>	11
<i>Previews</i>	20
<i>Color Blindness Simulation</i>	23
<i>CSS Examples</i>	26

Color

CIELCh(57, 77.064, 16.124)

Conversions

Conversions Part 1

Format	Color
Hex	FD3968
RGB	253, 57, 104
RGB Percent	99%, 22%, 41%
CMY	0.0060, 0.7753, 0.5927
CMYK	0.00, 0.77, 0.59, 0.01
HSL	346°, 98%, 61%
HSV	346°, 77%, 99%
XYZ	44.6510, 24.9227, 15.5139
YIQ	120.9620, 101.7290, 56.1690

Conversions

Conversions Part 2

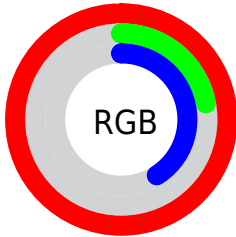
Format	Color
RYB	253, 57, 104
Decimal	16595304
CIELab	57.00, 74.03, 21.40
CIElCh	57, 77.064, 16.124
Yxy	24.9227, 0.5248, 0.2929
Android (android.graphics.Color)	4294785384 (0xFFFD3968)
YUV	120.9620, -8.3623, 115.7973
Hunter-Lab	49.9226, 72.2864, 16.5209

Details

The CIELCh color **57, 77.064, 16.124** is a dark color, and the websafe version is hex **FF3366**. The color can be described as middle washed rose. A complement of this color would be **90, 58.036, 171.124**, and the grayscale version is **51, 0.007, 296.813**.

A 20% lighter version of the original color is **68, 54.563, 6.833**, and **40, 69.816, 20.587** is the 20% darker color. If you saturate the color by 10%, you get **55, 84.003, 20.839**, and if you desaturate by 10%, it is **60, 68.715, 12.311**.

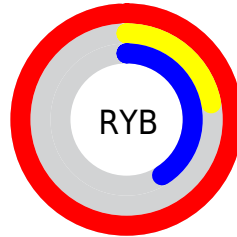
Distribution



Red (99%)

Green (22%)

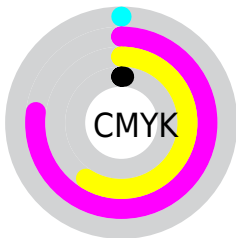
Blue (41%)



Red (99%)

Yellow (22%)

Blue (41%)

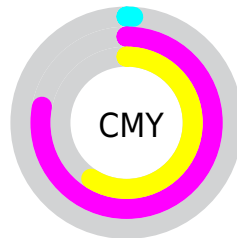


Cyan (0%)

Magenta (77%)

Yellow (59%)

Black (1%)



Cyan (1%)

Magenta (78%)

Yellow (59%)


Brightness & Saturation Gradients

These gradients show how the CIELCh color 57, 77.064, 16.124 changes by changing the brightness by 10 percent. The first figure shows a shift by +10% for each color and the second figure -10%.

Similar to the brightness gradients but the following saturation gradients show a change of the CIELCh color 57, 77.064, 16.124 by changing the saturation by 10% instead.

 57, 77.064, 16.124

 57, 77.064, 16.124

 100, 77.064,
16.124

 47, 77.064, 16.124

 77, 77.064, 16.124

 37, 77.064, 16.124

 87, 77.064, 16.124

 27, 77.064, 16.124

 97, 77.064, 16.124

 17, 77.064, 16.124

 7, 77.064, 16.124

 0, 77.064, 16.124

 57, 77.064, 16.124

 57, 77.064, 16.124

 55, 84.003, 20.839

 60, 68.715, 12.311

 53, 89.730, 26.308

 65, 59.165, 9.298

53, 91.185, 27.719

70, 48.827, 6.922

75, 38.146, 5.025

82, 27.484, 3.480

88, 17.087, 2.192

95, 7.096, 1.065

100, 0.528,
200.627

Harmonies

Complementary

The Complementary color scheme is a pair of colors which are on the opposite of each other on the color wheel.



57, 77.064, 16.124



90, 58.036, 171.124

Rectangle

The Rectangle color scheme consists of four colors that form a rectangle on the color wheel.



57, 77.064, 16.124



57, 77.064, 66.124



57, 77.064, 196.124



57, 77.064, 246.124

Sweetspot

The Sweet Spot groups the original color and five complimentary colors.



57, 77.060, 16.126



85, 22.978, 2.888



55, 106.677, 319.767



43, 16.022, 3.372



0, 0.000, 0.000



53, 0.007, 296.813

Same Dimension

The Same Dimension uses a secret algorithm to generate beautiful new colors.



57, 77.060, 16.126



54, 87.740, 23.853



63, 76.131, 45.276



50, 5.507, 1.298



40, 73.182, 26.670



10, 31.769, 16.731

Inverse Universe

The Inverse Universe completely reimagines the original color for something new.



57, 77.060, 16.126



54, 87.740, 23.853



77, 41.299, 237.684



50, 5.507, 1.298



40, 73.182, 26.670



10, 31.769, 16.731

Previews

White Background



This preview shows how the CIELCh color 57, 77.064, 16.124 looks on a white background.

Color Contrast Check

Large Text (above 18pt) WCAG AA ✓ Pass

Any Text WCAG AA ✗ Fail

Large Text (above 18pt) WCAG AAA ✗ Fail

Any Text WCAG AAA ✗ Fail

Black Background



This preview shows how the CIELCh color 57, 77.064, 16.124 looks on a black background.

Color Contrast Check

Large Text (above 18pt) WCAG AA ✓ Pass

Any Text WCAG AA ✓ Pass

Large Text (above 18pt) WCAG AAA ✓ Pass

Any Text WCAG AAA × Fail

If you want to check with other color combinations, try the [Color Contrast Checker](#).

CIELCh 57, 77.064, 16.124

Background



This preview shows how black text looks on a background with the CIELCh color 57, 77.064, 16.124.



This preview shows how white text looks on a background with the CIELCh color 57, 77.064, 16.124.

Color Blindness Simulation

Color vision deficiency is a very complex topic, and I could not describe the different causes any better than Wikipedia does, so if you want to learn more, you should check out their [article about color blindness](#).

Dichromacy



Original Color

57, 76.951, 15.951

Protanopia

57, 2.582, 317.354

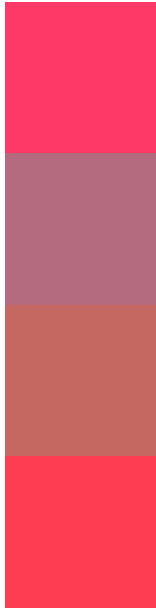
Deuteranopia

57, 25.914, 73.048



Tritanopia
57, 81.256, 31.152

Trichromacy



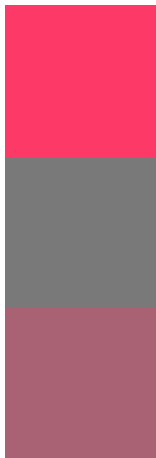
Original Color
57, 76.951, 15.951

Protanomaly
54, 32.058, 3.051

Deuteranomaly
55, 41.543, 29.046

Tritanomaly
57, 79.324, 25.988

Monochromacy



Original Color
57, 76.951, 15.951

Achromatopsia
51, 0.007, 296.813

Achromatomaly
50, 30.970, 5.493

CSS Examples

Text

The CSS property to change the color of the text to CIELCh 57, 77.064, 16.124 is called "color". The color property can be set on classes, ids or directly on the HTML element.

This example shows how text in the color `rgb(253, 57, 104)` looks like.

```
.text, #text, p{  
    color:rgb(253, 57, 104)  
}
```

If you want to add a text shadow in that color use the text-shadow property, you can generate a text shadow directly with our [CSS Text Shadow Generator](#).

Here you see how black text with a 4 pixel rgb(253, 57, 104) colored shadow looks like.

```
.shadow{ text-shadow: 4px 4px 2px rgb(253, 57, 104) }
```

Border

The CSS property to change the border of an element to CIELCh 57, 77.064, 16.124 is called "border". The border property can be set on classes, ids or directly on the HTML element.

This example shows the color as border, it can be applied via the CSS property "border" or "border-color".

```
.border, #border, table{ border:4px solid rgb(253, 57, 104) }
```

If only the border color should be changed use the property border-color.

```
.border{ border-color:rgb(253, 57, 104) }
```

If you want to add a box shadow in that color use:

Here you see how a box with a 4 pixel rgb(253, 57, 104) colored shadow looks like.

```
.boxshadow{ -moz-box-shadow:4px 4px 4px  
4px rgb(253, 57, 104); -webkit-box-  
shadow:4px 4px 4px 4px rgb(253, 57, 104);  
box-shadow:4px 4px 4px 4px rgb(253, 57,  
104) }
```

Background

The CSS property to change the background color of an element to CIELCh 57, 77.064, 16.124 is called "background". The background property can be set on classes, ids or directly on the HTML element.

```
.background, #background, body{  
background: rgb(253, 57, 104) }
```

If only the background color should be changed can be used:

```
.background{ background-color: rgb(253, 57,  
104) }
```

This example shows the color as background, it is applied via the CSS property "background".

To optimize and compress your CSS code, you can use our [online CSS compressor and optimizer](#) based on csstidy. If you want to create a linear or radial gradient as background or border, check our [CSS Gradient Generator](#).

Hey! You found this booklet interesting? Support Converting Colors with the new Membership Option!

The pro membership hides all ads, plus gives you double the colors in the color bucket, and more awesome pro features!

[Learn more, Memberships starting at \\$2.50/m!](#)

**Follow me
on Twitter!**

@ConvertingColor