

Converting Colors

CIELCh(61, 11.333, 37.247)

Have a look what the booklet for
CIELCh(61, 11.333, 37.247) contains.

CIELCh(61, 11.536, 37.250)	3
<i>Conversions</i>	4
<i>Details</i>	6
<i>Harmonies</i>	11
<i>Previews</i>	20
<i>Color Blindness Simulation</i>	23
<i>CSS Examples</i>	26

Color

CIELCh(61, 11.536, 37.250)

Conversions

Conversions Part 1

Format	Color
Hex	A88D87
RGB	168, 141, 135
RGB Percent	66%, 55%, 53%
CMY	0.3400, 0.4459, 0.4695
CMYK	0.00, 0.16, 0.20, 0.34
HSL	11°, 16%, 60%
HSV	11°, 20%, 66%
XYZ	30.1713, 29.2481, 27.0809
YIQ	148.3890, 18.0180, 3.8580

Conversions

Conversions Part 2

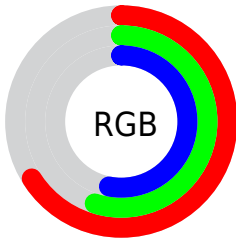
Format	Color
R_{YB}	168, 142, 135
Decimal	11046279
CIE _{Lab}	61.00, 9.18, 6.98
CIE _{LCh}	61, 11.536, 37.250
Yxy	29.2481, 0.3488, 0.3381
Android (android.graphics.Color)	4289236359 (0xFFA88D87)
YUV	148.3890, -6.6008, 17.1988
Hunter-Lab	54.0815, 4.9399, 8.1681

Details

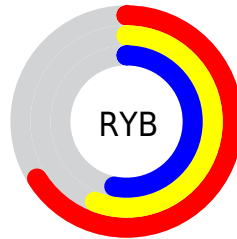
The CIELCh color $61, 11.536, 37.250$ is a dark color, and the websafe version is hex 999999 . A complement of this color would be $65, 10.145, 217.963$, and the grayscale version is $62, 0.008, 296.813$.

A 20% lighter version of the original color is $81, 11.678, 38.575$, and $41, 11.804, 38.515$ is the 20% darker color. If you saturate the color by 10%, you get $57, 18.149, 37.406$, and if you desaturate by 10%, it is $65, 5.428, 37.217$.

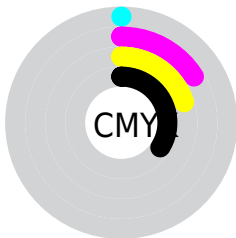
Distribution



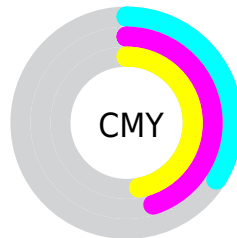
- Red (66%)
- Green (55%)
- Blue (53%)



- Red (66%)
- Yellow (56%)
- Blue (53%)



- Cyan (0%)
- Magenta (16%)
- Yellow (20%)
- Black (34%)



- Cyan (34%)
- Magenta (45%)
- Yellow (47%)

Brightness & Saturation Gradients

These gradients show how the CIELCh color 61, 11.536, 37.250 changes by changing the brightness by 10 percent. The first figure shows a shift by +10% for each color and the second figure -10%.

Similar to the brightness gradients but the following saturation gradients show a change of the CIELCh color 61, 11.536, 37.250 by changing the saturation by 10% instead.

61, 11.536, 37.250

61, 11.536, 37.250

100, 11.536,
37.250

51, 11.536, 37.250

81, 11.536, 37.250

41, 11.536, 37.250

91, 11.536, 37.250

31, 11.536, 37.250

21, 11.536, 37.250

11, 11.536, 37.250

1, 11.536, 37.250

0, 11.536, 37.250

61, 11.536, 37.250

61, 11.536, 37.250

57, 18.149, 37.406

65, 5.428, 37.217

53, 25.294, 37.715

69, 0.210, 219.704

50, 32.967, 38.233

73, 5.424, 217.680

46, 41.116, 38.994

77, 10.260,
217.874

43, 49.611, 40.004

82, 14.762,
218.136

41, 58.159, 41.181

38, 66.113, 42.233

86, 18.970,
218.431

37, 72.798, 43.061

90, 22.921,
218.747

37, 73.061, 43.124

94, 26.078,
201.889

95, 27.212,
197.740

Harmonies

Complementary

The Complementary color scheme is a pair of colors which are on the opposite of each other on the color wheel.



61, 11.536, 37.250



65, 10.145, 217.963

Rectangle

The Rectangle color scheme consists of four colors that form a rectangle on the color wheel.



61, 11.536, 37.250



61, 11.536, 87.250



61, 11.536, 217.250



61, 11.536, 267.250

Sweetspot

The Sweet Spot groups the original color and five complimentary colors.



61, 11.535, 37.260



84, 4.141, 37.190



60, 19.957, 330.562



44, 2.750, 37.198



94, 0.011, 296.813



46, 0.006, 296.813

Same Dimension

The Same Dimension uses a secret algorithm to generate beautiful new colors.



61, 11.535, 37.260



75, 17.856, 37.313



65, 12.967, 88.675



33, 3.190, 37.215



32, 65.942, 43.124



2, 5.722, 34.563

Inverse Universe

The Inverse Universe completely reimagines the original color for something new.



65, 10.145, 217.963



81, 15.160, 218.169



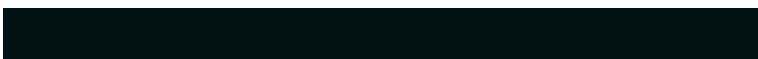
60, 12.914, 273.866



35, 3.012, 217.677



47, 29.054, 230.925



4, 5.470, 224.161

Previews

White Background



This preview shows how the CIELCh color 61, 11.536, 37.250 looks on a white background.

Color Contrast Check

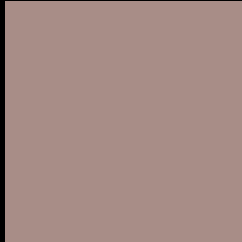
Large Text (above 18pt) WCAG AA ✓ Pass

Any Text WCAG AA × Fail

Large Text (above 18pt) WCAG AAA × Fail

Any Text WCAG AAA × Fail

Black Background



This preview shows how the CIE LCh color 61, 11.536, 37.250 looks on a black background.

Color Contrast Check

Large Text (above 18pt) WCAG AA ✓ Pass

Any Text WCAG AA ✓ Pass

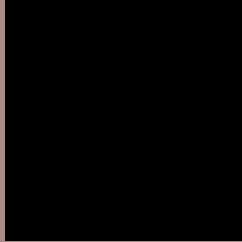
Large Text (above 18pt) WCAG AAA ✓ Pass

Any Text WCAG AAA × Fail

If you want to check with other color combinations, try the [Color Contrast Checker](#).

CIELCh 61, 11.536, 37.250

Background



This preview shows how black text looks on a background with the CIELCh color 61, 11.536, 37.250.



This preview shows how white text looks on a background with the CIELCh color 61, 11.536, 37.250.

Color Blindness Simulation

Color vision deficiency is a very complex topic, and I could not describe the different causes any better than Wikipedia does, so if you want to learn more, you should check out their [article about color blindness](#).

Dichromacy



Original Color


61, 11.536, 37.250

Protanopia

61, 5.411, 88.012

Deuteranopia

61, 10.551, 41.966



Tritanopia
61, 13.646, 354.015

Trichromacy



Original Color
61, 11.536, 37.250

Protanomaly
61, 6.883, 60.282

Deuteranomaly
61, 10.940, 41.187

Tritanomaly
61, 11.861, 6.992

Monochromacy



Original Color
61, 11.536, 37.250

Achromatopsia
62, 0.008, 296.813

Achromatomaly
61, 4.089, 35.544

CSS Examples

Text

The CSS property to change the color of the text to CIELCh 61, 11.536, 37.250 is called "color". The color property can be set on classes, ids or directly on the HTML element.

This example shows how text in the color `rgb(168, 141, 135)` looks like.

```
.text, #text, p{  
    color:rgb(168, 141, 135)  
}
```

If you want to add a text shadow in that color use the text-shadow property, you can generate a text shadow directly with our [CSS Text Shadow Generator](#).

Here you see how black text with a 4 pixel rgb(168, 141, 135) colored shadow looks like.

```
.shadow{ text-shadow: 4px 4px 2px rgb(168, 141, 135) }
```

Border

The CSS property to change the border of an element to CIELCh 61, 11.536, 37.250 is called "border". The border property can be set on classes, ids or directly on the HTML element.

This example shows the color as border, it can be applied via the CSS property "border" or "border-color".

```
.border, #border, table{ border:4px solid rgb(168, 141, 135) }
```

If only the border color should be changed use the property `border-color`.

```
.border{ border-color:rgb(168, 141, 135) }
```

If you want to add a box shadow in that color use:

Here you see how a box with a 4 pixel `rgb(168, 141, 135)` colored shadow looks like.

```
.boxshadow{ -moz-box-shadow:4px 4px 4px  
4px rgb(168, 141, 135); -webkit-box-  
shadow:4px 4px 4px 4px rgb(168, 141, 135);  
box-shadow:4px 4px 4px 4px rgb(168, 141,  
135) }
```

Background

The CSS property to change the background color of an element to CIELCh 61, 11.536, 37.250 is called "background". The background property can be set on classes, ids or directly on the HTML element.

```
.background, #background, body{  
background: rgb(168, 141, 135) }
```

If only the background color should be changed can be used:

```
.background{ background-color: rgb(168,  
141, 135) }
```

This example shows the color as background, it is applied via the CSS property "background".

To optimize and compress your CSS code, you can use our [online CSS compressor and optimizer](#) based on csstidy. If you want to create a linear or radial gradient as background or border, check our [CSS Gradient Generator](#).

Hey! You found this booklet interesting? Support Converting Colors with the new Membership Option!

The pro membership hides all ads, plus gives you double the colors in the color bucket, and more awesome pro features!

[Learn more, Memberships starting at \\$2.50/m!](#)

**Follow me
on Twitter!**

@ConvertingColor