

Converting Colors

CIELCh(61, 12.297, 17.641)

Have a look what the booklet for
CIELCh(61, 12.297, 17.641) contains.

CIELCh(61, 12.074, 17.953)	3
<i>Conversions</i>	4
<i>Details</i>	6
<i>Harmonies</i>	11
<i>Previews</i>	20
<i>Color Blindness Simulation</i>	23
<i>CSS Examples</i>	26

Color

CIELCh(61, 12.074, 17.953)

Conversions

Conversions Part 1

Format	Color
Hex	AA8C8D
RGB	170, 140, 141
RGB Percent	67%, 55%, 55%
CMY	0.3331, 0.4508, 0.4469
CMYK	0.00, 0.18, 0.17, 0.33
HSL	358°, 15%, 61%
HSV	358°, 18%, 67%
XYZ	30.7867, 29.2481, 29.2424
YIQ	149.0840, 17.5590, 6.6710

Conversions

Conversions Part 2

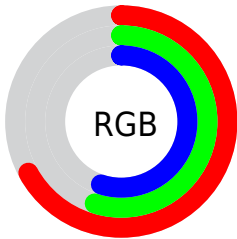
Format	Color
R_{YB}	170, 140, 141
Decimal	11177101
CIE Lab	61.00, 11.49, 3.72
CIE LCh	61, 12.074, 17.953
Yxy	29.2481, 0.3448, 0.3276
Android (android.graphics.Color)	4289367181 (0xFFAA8C8D)
YUV	149.0840, -3.9854, 18.3433
Hunter-Lab	54.0815, 6.9711, 5.7985

Details

The CIELCh color $61, 12.074, 17.953$ is a dark color, and the websafe version is hex `CC9999`. A complement of this color would be $67, 10.859, 195.604$, and the grayscale version is $62, 0.008, 296.813$.

A 20% lighter version of the original color is $81, 12.069, 17.822$, and $41, 11.825, 18.131$ is the 20% darker color. If you saturate the color by 10%, you get $56, 19.602, 19.028$, and if you desaturate by 10%, it is $66, 5.041, 17.072$.

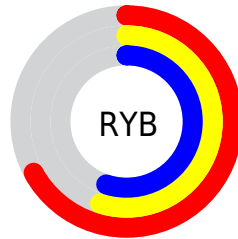
Distribution



Red (67%)

Green (55%)

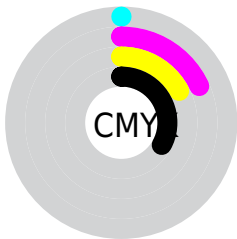
Blue (55%)



Red (67%)

Yellow (55%)

Blue (55%)

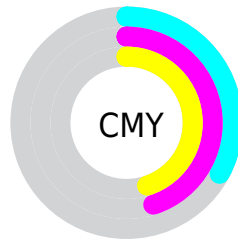


Cyan (0%)

Magenta (18%)

Yellow (17%)

Black (33%)



Cyan (33%)

Magenta (45%)

Yellow (45%)

Brightness & Saturation Gradients

These gradients show how the CIELCh color 61, 12.074, 17.953 changes by changing the brightness by 10 percent. The first figure shows a shift by +10% for each color and the second figure -10%.

Similar to the brightness gradients but the following saturation gradients show a change of the CIELCh color 61, 12.074, 17.953 by changing the saturation by 10% instead.

■ 61, 12.074, 17.953

■ 61, 12.074, 17.953

■ 100, 12.074,
17.953

■ 51, 12.074, 17.953

■ 81, 12.074, 17.953

■ 41, 12.074, 17.953

■ 91, 12.074, 17.953

■ 31, 12.074, 17.953

■ 21, 12.074, 17.953

■ 11, 12.074, 17.953

■ 1, 12.074, 17.953

■ 0, 12.074, 17.953

■ 61, 12.074, 17.953

■ 61, 12.074, 17.953

■ 56, 19.602, 19.028

■ 66, 5.041, 17.072

52, 27.594, 20.379

71, 1.498, 196.826

48, 35.953, 22.112

76, 7.572, 196.023

44, 44.508, 24.340

81, 13.223,
195.549

41, 53.015, 27.166

86, 18.495,
195.166

38, 61.171, 30.611

36, 68.564, 34.454

91, 23.430,
194.845

35, 74.433, 37.880

95, 26.739,
197.769

35, 75.676, 38.525

Harmonies

Complementary

The Complementary color scheme is a pair of colors which are on the opposite of each other on the color wheel.



61, 12.074, 17.953



67, 10.859, 195.604

Rectangle

The Rectangle color scheme consists of four colors that form a rectangle on the color wheel.



61, 12.074, 17.953



61, 12.074, 67.953



61, 12.074, 197.953



61, 12.074, 247.953

Sweetspot

The Sweet Spot groups the original color and five complimentary colors.



61, 12.072, 17.961



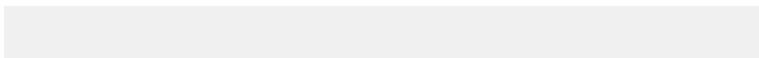
85, 4.057, 16.839



62, 20.086, 324.453



45, 2.797, 16.905



95, 0.011, 296.813



47, 0.006, 296.813

Same Dimension

The Same Dimension uses a secret algorithm to generate beautiful new colors.



61, 12.072, 17.961



76, 18.084, 18.332



65, 10.109, 69.651



33, 3.724, 17.214



30, 67.843, 38.026



1, 6.581, 17.024

Inverse Universe

The Inverse Universe completely reimagines the original color for something new.



61, 12.072, 17.961



76, 18.084, 18.332



64, 9.572, 254.106



33, 3.724, 17.214



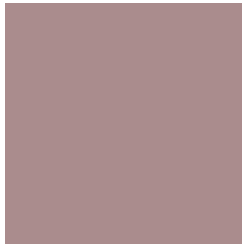
30, 67.843, 38.026



1, 6.581, 17.024

Previews

White Background



This preview shows how the CIELCh color 61, 12.074, 17.953 looks on a white background.

Color Contrast Check

Large Text (above 18pt) WCAG AA ✓ Pass

Any Text WCAG AA ✗ Fail

Large Text (above 18pt) WCAG AAA ✗ Fail

Any Text WCAG AAA ✗ Fail

Black Background



This preview shows how the CIE LCh color 61, 12.074, 17.953 looks on a black background.

Color Contrast Check

Large Text (above 18pt) WCAG AA ✓ Pass

Any Text WCAG AA ✓ Pass

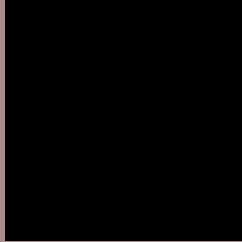
Large Text (above 18pt) WCAG AAA ✓ Pass

Any Text WCAG AAA × Fail

If you want to check with other color combinations, try the [Color Contrast Checker](#).

CIELCh 61, 12.074, 17.953

Background



This preview shows how black text looks on a background with the CIELCh color 61, 12.074, 17.953.



This preview shows how white text looks on a background with the CIELCh color 61, 12.074, 17.953.

Color Blindness Simulation

Color vision deficiency is a very complex topic, and I could not describe the different causes any better than Wikipedia does, so if you want to learn more, you should check out their [article about color blindness](#).

Dichromacy



Original Color

61, 12.074, 17.953

Protanopia

61, 1.912, 55.184

Deuteranopia

61, 8.823, 23.851



Tritanopia
61, 14.002, 354.807

Trichromacy



Original Color
61, 12.074, 17.953

Protanomaly
61, 5.528, 19.870

Deuteranomaly
61, 10.021, 20.366

Tritanomaly
61, 13.434, 1.367

Monochromacy



Original Color
61, 12.074, 17.953

Achromatopsia
62, 0.008, 296.813

Achromatomaly
61, 4.317, 19.723

CSS Examples

Text

The CSS property to change the color of the text to CIELCh 61, 12.074, 17.953 is called "color". The color property can be set on classes, ids or directly on the HTML element.

This example shows how text in the color `rgb(170, 140, 141)` looks like.

```
.text, #text, p{  
    color:rgb(170, 140, 141)  
}
```

If you want to add a text shadow in that color use the text-shadow property, you can generate a text shadow directly with our [CSS Text Shadow Generator](#).

Here you see how black text with a 4 pixel rgb(170, 140, 141) colored shadow looks like.

```
.shadow{ text-shadow: 4px 4px 2px rgb(170, 140, 141) }
```

Border

The CSS property to change the border of an element to CIELCh 61, 12.074, 17.953 is called "border". The border property can be set on classes, ids or directly on the HTML element.

This example shows the color as border, it can be applied via the CSS property "border" or "border-color".

```
.border, #border, table{ border:4px solid rgb(170, 140, 141) }
```

If only the border color should be changed use the property `border-color`.

```
.border{ border-color:rgb(170, 140, 141) }
```

If you want to add a box shadow in that color use:

Here you see how a box with a 4 pixel `rgb(170, 140, 141)` colored shadow looks like.

```
.boxshadow{ -moz-box-shadow:4px 4px 4px  
4px rgb(170, 140, 141); -webkit-box-  
shadow:4px 4px 4px 4px rgb(170, 140, 141);  
box-shadow:4px 4px 4px 4px rgb(170, 140,  
141) }
```

Background

The CSS property to change the background color of an element to CIELCh 61, 12.074, 17.953 is called "background". The background property can be set on classes, ids or directly on the HTML element.

```
.background, #background, body{  
background: rgb(170, 140, 141) }
```

If only the background color should be changed can be used:

```
.background{ background-color: rgb(170,  
140, 141) }
```

This example shows the color as background, it is applied via the CSS property "background".

To optimize and compress your CSS code, you can use our [online CSS compressor and optimizer](#) based on csstidy. If you want to create a linear or radial gradient as background or border, check our [CSS Gradient Generator](#).

Hey! You found this booklet interesting? Support Converting Colors with the new Membership Option!

The pro membership hides all ads, plus gives you double the colors in the color bucket, and more awesome pro features!

[Learn more, Memberships starting at \\$2.50/m!](#)

**Follow me
on Twitter!**

@ConvertingColor