

Converting Colors

CIELCh(61, 13.582, 68.054)

Have a look what the booklet for
CIELCh(61, 13.582, 68.054) contains.

CIELCh(61, 13.698, 67.071)	3
<i>Conversions</i>	4
<i>Details</i>	6
<i>Harmonies</i>	11
<i>Previews</i>	20
<i>Color Blindness Simulation</i>	23
<i>CSS Examples</i>	26

Color

CIELCh(61, 13.698, 67.071)

Conversions

Conversions Part 1

Format	Color
Hex	A58F7D
RGB	165, 143, 125
RGB Percent	65%, 56%, 49%
CMY	0.3518, 0.4381, 0.5087
CMYK	0.00, 0.13, 0.24, 0.35
HSL	27°, 18%, 57%
HSV	27°, 24%, 65%
XYZ	29.1621, 29.2481, 23.6029
YIQ	147.5260, 18.8900, -0.9340

Conversions

Conversions Part 2

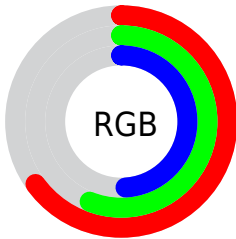
Format	Color
R_{YB}	165, 158, 125
Decimal	10850173
CIE _{Lab}	61.00, 5.34, 12.62
CIE _{LCh}	61, 13.698, 67.071
Yxy	29.2481, 0.3556, 0.3566
Android (android.graphics.Color)	4289040253 (0xFFA58F7D)
YUV	147.5260, -11.1053, 15.3247
Hunter-Lab	54.0815, 1.6090, 11.9811

Details

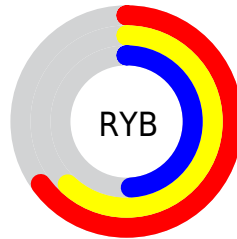
The CIELCh color $61, 13.698, 67.071$ is a dark color, and the websafe version is hex 999999 . A complement of this color would be $60, 12.590, 253.196$, and the grayscale version is $61, 0.008, 296.813$.

A 20% lighter version of the original color is $81, 13.468, 67.866$, and $41, 13.892, 67.272$ is the 20% darker color. If you saturate the color by 10%, you get $58, 19.902, 65.968$, and if you desaturate by 10%, it is $64, 7.823, 68.187$.

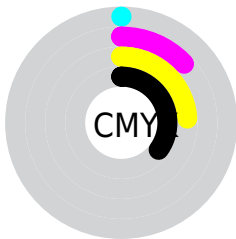
Distribution



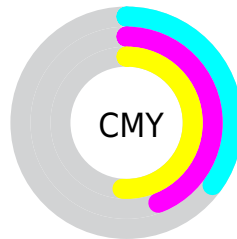
- Red (65%)
- Green (56%)
- Blue (49%)



- Red (65%)
- Yellow (62%)
- Blue (49%)



- Cyan (0%)
- Magenta (13%)
- Yellow (24%)
- Black (35%)



- Cyan (35%)
- Magenta (44%)
- Yellow (51%)

Brightness & Saturation Gradients

These gradients show how the CIELCh color 61, 13.698, 67.071 changes by changing the brightness by 10 percent. The first figure shows a shift by +10% for each color and the second figure -10%.

Similar to the brightness gradients but the following saturation gradients show a change of the CIELCh color 61, 13.698, 67.071 by changing the saturation by 10% instead.

■ 61, 13.698, 67.071

■ 61, 13.698, 67.071

■ 100, 13.698,
67.071

■ 51, 13.698, 67.071

■ 81, 13.698, 67.071

■ 41, 13.698, 67.071

■ 91, 13.698, 67.071

■ 31, 13.698, 67.071

■ 21, 13.698, 67.071

■ 11, 13.698, 67.071

■ 1, 13.698, 67.071

■ 0, 13.698, 67.071

■ 61, 13.698, 67.071

■ 61, 13.698, 67.071

■ 58, 19.902, 65.968

■ 64, 7.823, 68.187

56, 26.442, 64.865

67, 2.254, 69.198

53, 33.298, 63.770

70, 3.037, 250.581

51, 40.388, 62.662

72, 8.079, 251.598

48, 47.517, 61.477

75, 12.900,
252.643

46, 54.265, 60.062

78, 17.526,
253.665

44, 59.882, 58.114

43, 62.895, 57.006

81, 21.980,
254.655

84, 25.293,
253.563

87, 23.755,
240.045

Harmonies

Complementary

The Complementary color scheme is a pair of colors which are on the opposite of each other on the color wheel.



61, 13.698, 67.071



60, 12.590, 253.196

Rectangle

The Rectangle color scheme consists of four colors that form a rectangle on the color wheel.



61, 13.698, 67.071



61, 13.698, 117.071



61, 13.698, 247.071



61, 13.698, 297.071

Sweetspot

The Sweet Spot groups the original color and five complimentary colors.



61, 13.698, 67.080



83, 4.668, 68.936



57, 20.000, 343.061



44, 3.032, 68.882



93, 0.011, 296.813



45, 0.006, 296.813

Same Dimension

The Same Dimension uses a secret algorithm to generate beautiful new colors.



61, 13.698, 67.080



76, 20.564, 66.488



66, 20.838, 105.700



33, 3.041, 68.719



38, 57.074, 57.446



3, 4.548, 64.816

Inverse Universe

The Inverse Universe completely reimagines the original color for something new.



60, 12.590, 253.196



74, 18.506, 254.142



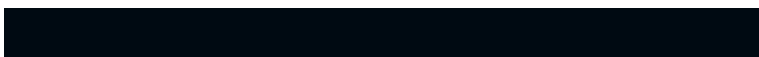
54, 21.909, 290.971



33, 2.956, 251.007



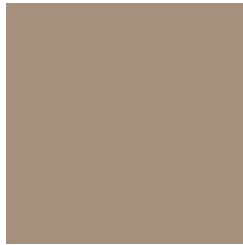
34, 42.189, 277.712



2, 4.798, 255.625

Previews

White Background



This preview shows how the CIELCh color 61, 13.698, 67.071 looks on a white background.

Color Contrast Check

Large Text (above 18pt) WCAG AA ✓ Pass

Any Text WCAG AA × Fail

Large Text (above 18pt) WCAG AAA × Fail

Any Text WCAG AAA × Fail

Black Background



This preview shows how the CIELCh color 61, 13.698, 67.071 looks on a black background.

Color Contrast Check

Large Text (above 18pt) WCAG AA ✓ Pass

Any Text WCAG AA ✓ Pass

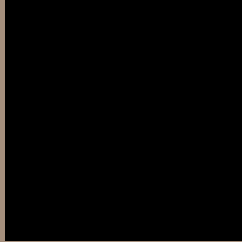
Large Text (above 18pt) WCAG AAA ✓ Pass

Any Text WCAG AAA × Fail

If you want to check with other color combinations, try the [Color Contrast Checker](#).

CIELCh 61, 13.698, 67.071

Background



This preview shows how black text looks on a background with the CIELCh color 61, 13.698, 67.071.



This preview shows how white text looks on a background with the CIELCh color 61, 13.698, 67.071.

Color Blindness Simulation

Color vision deficiency is a very complex topic, and I could not describe the different causes any better than Wikipedia does, so if you want to learn more, you should check out their [article about color blindness](#).

Dichromacy



Original Color

61, 13.698, 67.071

Protanopia

61, 11.666, 92.571

Deuteranopia

61, 14.481, 58.189



Tritanopia
61, 12.581, 351.387

Trichromacy



Original Color
61, 13.698, 67.071

Protanomaly
61, 12.435, 83.336

Deuteranomaly
61, 14.147, 59.235

Tritanomaly
61, 10.418, 17.348

Monochromacy



Original Color
61, 13.698, 67.071

Achromatopsia
61, 0.008, 296.813

Achromatomaly
61, 4.614, 66.270

CSS Examples

Text

The CSS property to change the color of the text to CIELCh 61, 13.698, 67.071 is called "color". The color property can be set on classes, ids or directly on the HTML element.

This example shows how text in the color `rgb(165, 143, 125)` looks like.

```
.text, #text, p{  
    color:rgb(165, 143, 125)  
}
```

If you want to add a text shadow in that color use the text-shadow property, you can generate a text shadow directly with our [CSS Text Shadow Generator](#).

Here you see how black text with a 4 pixel rgb(165, 143, 125) colored shadow looks like.

```
.shadow{ text-shadow: 4px 4px 2px rgb(165, 143, 125) }
```

Border

The CSS property to change the border of an element to CIELCh 61, 13.698, 67.071 is called "border". The border property can be set on classes, ids or directly on the HTML element.

This example shows the color as border, it can be applied via the CSS property "border" or "border-color".

```
.border, #border, table{ border:4px solid rgb(165, 143, 125) }
```

If only the border color should be changed use the property `border-color`.

```
.border{ border-color:rgb(165, 143, 125) }
```

If you want to add a box shadow in that color use:

Here you see how a box with a 4 pixel `rgb(165, 143, 125)` colored shadow looks like.

```
.boxshadow{ -moz-box-shadow:4px 4px 4px 4px rgb(165, 143, 125); -webkit-box-shadow:4px 4px 4px 4px rgb(165, 143, 125); box-shadow:4px 4px 4px 4px rgb(165, 143, 125) }
```

Background

The CSS property to change the background color of an element to CIELCh 61, 13.698, 67.071 is called "background". The background property can be set on classes, ids or directly on the HTML element.

```
.background, #background, body{  
background: rgb(165, 143, 125) }
```

If only the background color should be changed can be used:

```
.background{ background-color: rgb(165,  
143, 125) }
```

This example shows the color as background, it is applied via the CSS property "background".

To optimize and compress your CSS code, you can use our [online CSS compressor and optimizer](#) based on csstidy. If you want to create a linear or radial gradient as background or border, check our [CSS Gradient Generator](#).

Hey! You found this booklet interesting? Support Converting Colors with the new Membership Option!

The pro membership hides all ads, plus gives you double the colors in the color bucket, and more awesome pro features!

[Learn more, Memberships starting at \\$2.50/m!](#)

**Follow me
on Twitter!**

@ConvertingColor