

Converting Colors

CIELCh(61, 15.929, 43.714)

Have a look what the booklet for
CIELCh(61, 15.929, 43.714) contains.

CIELCh(61, 15.773, 45.637)	3
<i>Conversions</i>	4
<i>Details</i>	6
<i>Harmonies</i>	11
<i>Previews</i>	20
<i>Color Blindness Simulation</i>	23
<i>CSS Examples</i>	26

Color

CIELCh(61, 15.773, 45.637)

Conversions

Conversions Part 1

Format	Color
Hex	AE8C80
RGB	174, 140, 128
RGB Percent	68%, 55%, 50%
CMY	0.3183, 0.4515, 0.4986
CMYK	0.00, 0.20, 0.26, 0.32
HSL	16°, 22%, 59%
HSV	16°, 26%, 68%
XYZ	30.6638, 29.2481, 24.4010
YIQ	148.7980, 24.1160, 3.4760

Conversions

Conversions Part 2

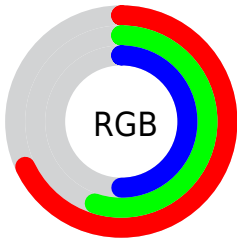
Format	Color
RYB	174, 144, 128
Decimal	11439232
CIELab	61.00, 11.03, 11.28
CIElCh	61, 15.773, 45.637
Yxy	29.2481, 0.3637, 0.3469
Android (android.graphics.Color)	4289629312 (0xFFAE8C80)
YUV	148.7980, -10.2534, 22.1022
Hunter-Lab	54.0815, 6.5654, 11.1061

Details

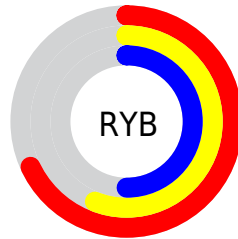
The CIELCh color $61, 15.773, 45.637$ is a dark color, and the websafe version is hex `CC9999`. A complement of this color would be $64, 13.365, 228.713$, and the grayscale version is $62, 0.008, 296.813$.

A 20% lighter version of the original color is $81, 15.624, 46.275$, and $41, 15.829, 45.575$ is the 20% darker color. If you saturate the color by 10%, you get $57, 22.623, 45.424$, and if you desaturate by 10%, it is $65, 9.429, 45.966$.

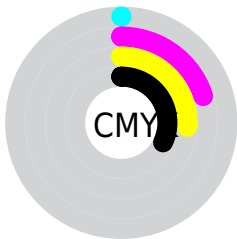
Distribution



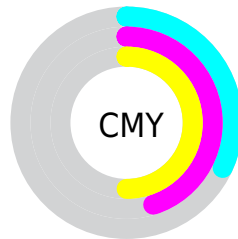
- Red (68%)
- Green (55%)
- Blue (50%)



- Red (68%)
- Yellow (56%)
- Blue (50%)



- Cyan (0%)
- Magenta (20%)
- Yellow (26%)
- Black (32%)



- Cyan (32%)
- Magenta (45%)
- Yellow (50%)


Brightness & Saturation Gradients

These gradients show how the CIELCh color 61, 15.773, 45.637 changes by changing the brightness by 10 percent. The first figure shows a shift by +10% for each color and the second figure -10%.

Similar to the brightness gradients but the following saturation gradients show a change of the CIELCh color 61, 15.773, 45.637 by changing the saturation by 10% instead.

 61, 15.773, 45.637

 61, 15.773, 45.637

 100, 15.773,
45.637

 51, 15.773, 45.637

 81, 15.773, 45.637

 41, 15.773, 45.637

 91, 15.773, 45.637

 31, 15.773, 45.637

 21, 15.773, 45.637

 11, 15.773, 45.637

 1, 15.773, 45.637

 0, 15.773, 45.637

 61, 15.773, 45.637

 61, 15.773, 45.637

 57, 22.623, 45.424

 65, 9.429, 45.966

54, 29.998, 45.335

69, 3.557, 46.310

51, 37.882, 45.399

72, 1.887, 227.180

47, 46.191, 45.615

76, 6.949, 227.530

45, 54.704, 45.919

80, 11.672,
228.063

42, 62.916, 46.105

84, 16.097,
228.628

40, 69.868, 45.766

39, 72.274, 45.823

88, 20.262,
229.205

92, 22.438,
214.806

95, 25.705,
197.832

Harmonies

Complementary

The Complementary color scheme is a pair of colors which are on the opposite of each other on the color wheel.



61, 15.773, 45.637



64, 13.365, 228.713

Rectangle

The Rectangle color scheme consists of four colors that form a rectangle on the color wheel.



61, 15.773, 45.637



61, 15.773, 95.637



61, 15.773, 225.637



61, 15.773, 275.637

Sweetspot

The Sweet Spot groups the original color and five complimentary colors.



61, 15.772, 45.645



86, 5.512, 46.261



59, 26.097, 334.094



46, 3.972, 46.211



96, 0.011, 296.813



48, 0.006, 296.813

Same Dimension

The Same Dimension uses a secret algorithm to generate beautiful new colors.



61, 15.772, 45.645



75, 24.284, 45.496



67, 19.523, 94.066



35, 3.148, 46.223



34, 64.640, 46.128



3, 6.568, 40.971

Inverse Universe

The Inverse Universe completely reimagines the original color for something new.



64, 13.365, 228.713



80, 19.689, 229.383



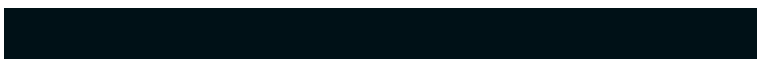
58, 19.876, 280.938



35, 2.986, 227.369



44, 31.106, 247.649



4, 6.396, 237.235

Previews

White Background



This preview shows how the CIELCh color 61, 15.773, 45.637 looks on a white background.

Color Contrast Check

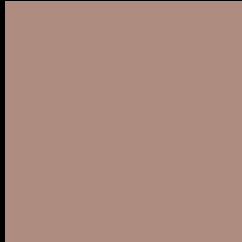
Large Text (above 18pt) WCAG AA ✓ Pass

Any Text WCAG AA × Fail

Large Text (above 18pt) WCAG AAA × Fail

Any Text WCAG AAA × Fail

Black Background



This preview shows how the CIE LCh color 61, 15.773, 45.637 looks on a black background.

Color Contrast Check

Large Text (above 18pt) WCAG AA ✓ Pass

Any Text WCAG AA ✓ Pass

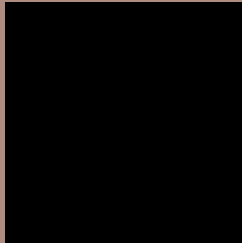
Large Text (above 18pt) WCAG AAA ✓ Pass

Any Text WCAG AAA × Fail

If you want to check with other color combinations, try the [Color Contrast Checker](#).

CIELCh 61, 15.773, 45.637

Background



This preview shows how black text looks on a background with the CIELCh color 61, 15.773, 45.637.



This preview shows how white text looks on a background with the CIELCh color 61, 15.773, 45.637.

Color Blindness Simulation

Color vision deficiency is a very complex topic, and I could not describe the different causes any better than Wikipedia does, so if you want to learn more, you should check out their [article about color blindness](#).

Dichromacy



Original Color


61, 15.773, 45.637

Protanopia

61, 9.395, 91.557

Deuteranopia

61, 14.111, 56.534



Tritanopia
61, 16.603, 359.478

Trichromacy



Original Color
61, 15.773, 45.637

Protanomaly
61, 10.524, 67.809

Deuteranomaly
61, 14.851, 52.044

Tritanomaly
61, 15.004, 14.555

Monochromacy



Original Color
61, 15.773, 45.637

Achromatopsia
62, 0.008, 296.813

Achromatomaly
61, 5.527, 50.099

CSS Examples

Text

The CSS property to change the color of the text to CIELCh 61, 15.773, 45.637 is called "color". The color property can be set on classes, ids or directly on the HTML element.

This example shows how text in the color `rgb(174, 140, 128)` looks like.

```
.text, #text, p{  
    color:rgb(174, 140, 128)  
}
```

If you want to add a text shadow in that color use the text-shadow property, you can generate a text shadow directly with our [CSS Text Shadow Generator](#).

Here you see how black text with a 4 pixel rgb(174, 140, 128) colored shadow looks like.

```
.shadow{ text-shadow: 4px 4px 2px rgb(174, 140, 128) }
```

Border

The CSS property to change the border of an element to CIELCh 61, 15.773, 45.637 is called "border". The border property can be set on classes, ids or directly on the HTML element.

This example shows the color as border, it can be applied via the CSS property "border" or "border-color".

```
.border, #border, table{ border:4px solid rgb(174, 140, 128) }
```

If only the border color should be changed use the property `border-color`.

```
.border{ border-color:rgb(174, 140, 128) }
```

If you want to add a box shadow in that color use:

Here you see how a box with a 4 pixel `rgb(174, 140, 128)` colored shadow looks like.

```
.boxshadow{ -moz-box-shadow:4px 4px 4px  
4px rgb(174, 140, 128); -webkit-box-  
shadow:4px 4px 4px 4px rgb(174, 140, 128);  
box-shadow:4px 4px 4px 4px rgb(174, 140,  
128) }
```

Background

The CSS property to change the background color of an element to CIELCh 61, 15.773, 45.637 is called "background". The background property can be set on classes, ids or directly on the HTML element.

```
.background, #background, body{  
background: rgb(174, 140, 128) }
```

If only the background color should be changed can be used:

```
.background{ background-color: rgb(174,  
140, 128) }
```

This example shows the color as background, it is applied via the CSS property "background".

To optimize and compress your CSS code, you can use our [online CSS compressor and optimizer](#) based on csstidy. If you want to create a linear or radial gradient as background or border, check our [CSS Gradient Generator](#).

Hey! You found this booklet interesting? Support Converting Colors with the new Membership Option!

The pro membership hides all ads, plus gives you double the colors in the color bucket, and more awesome pro features!

[Learn more, Memberships starting at \\$2.50/m!](#)

**Follow me
on Twitter!**

@ConvertingColor