

Converting Colors

CIELCh(61, 16.562, 37.908)

Have a look what the booklet for
CIELCh(61, 16.562, 37.908) contains.

CIELCh(61, 16.648, 38.314)	3
<i>Conversions</i>	4
<i>Details</i>	6
<i>Harmonies</i>	11
<i>Previews</i>	20
<i>Color Blindness Simulation</i>	23
<i>CSS Examples</i>	26

Color

CIELCh(61, 16.648, 38.314)

Conversions

Conversions Part 1

Format	Color
Hex	B18B82
RGB	177, 139, 130
RGB Percent	69%, 55%, 51%
CMY	0.3075, 0.4565, 0.4917
CMYK	0.00, 0.22, 0.27, 0.31
HSL	11°, 23%, 60%
HSV	11°, 27%, 69%
XYZ	31.2127, 29.2481, 24.9811
YIQ	149.3360, 25.5370, 5.2570

Conversions

Conversions Part 2

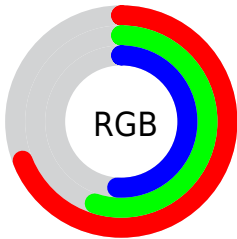
Format	Color
RYB	177, 141, 130
Decimal	11635586
CIELab	61.00, 13.06, 10.32
CIELCh	61, 16.648, 38.314
Yxy	29.2481, 0.3653, 0.3423
Android (android.graphics.Color)	4289825666 (0xFFB18B82)
YUV	149.3360, -9.5326, 24.2613
Hunter-Lab	54.0815, 8.3769, 10.4701

Details

The CIELCh color $61, 16.648, 38.314$ is a light color, and the websafe version is hex `CC9999`. A complement of this color would be $66, 13.910, 219.518$, and the grayscale version is $62, 0.008, 296.813$.

A 20% lighter version of the original color is $81, 16.415, 39.164$, and $41, 16.345, 38.326$ is the 20% darker color. If you saturate the color by 10%, you get $57, 23.871, 38.521$, and if you desaturate by 10%, it is $65, 9.969, 38.266$.

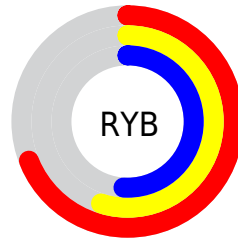
Distribution



Red (69%)

Green (55%)

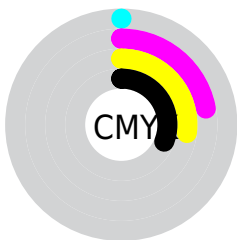
Blue (51%)



Red (69%)

Yellow (55%)

Blue (51%)

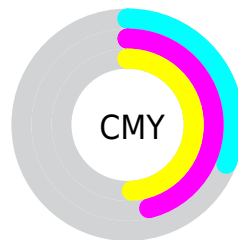


Cyan (0%)

Magenta (22%)

Yellow (27%)

Black (31%)



Cyan (31%)

Magenta (46%)

Yellow (49%)


Brightness & Saturation Gradients

These gradients show how the CIELCh color 61, 16.648, 38.314 changes by changing the brightness by 10 percent. The first figure shows a shift by +10% for each color and the second figure -10%.

Similar to the brightness gradients but the following saturation gradients show a change of the CIELCh color 61, 16.648, 38.314 by changing the saturation by 10% instead.

 61, 16.648, 38.314

 61, 16.648, 38.314

 100, 16.648,
38.314

 51, 16.648, 38.314

 81, 16.648, 38.314

 41, 16.648, 38.314

 91, 16.648, 38.314

 31, 16.648, 38.314

 21, 16.648, 38.314

 11, 16.648, 38.314

 1, 16.648, 38.314

 0, 16.648, 38.314

 61, 16.648, 38.314

 61, 16.648, 38.314

 57, 23.871, 38.521

 65, 9.969, 38.266

53, 31.651, 38.910

69, 3.805, 38.269

50, 39.952, 39.525

73, 1.887, 218.837

46, 48.670, 40.381

78, 7.156, 218.885

44, 57.563, 41.426

82, 12.049,
219.145

41, 66.089, 42.443

86, 16.611,
219.456

39, 73.195, 42.963

39, 75.506, 43.326

91, 20.882,
219.794

95, 24.232,
200.616

95, 24.949,
197.879

Harmonies

Complementary

The Complementary color scheme is a pair of colors which are on the opposite of each other on the color wheel.



61, 16.648, 38.314



66, 13.910, 219.518

Rectangle

The Rectangle color scheme consists of four colors that form a rectangle on the color wheel.



61, 16.648, 38.314



61, 16.648, 88.314



61, 16.648, 218.314



61, 16.648, 268.314

Sweetspot

The Sweet Spot groups the original color and five complimentary colors.



61, 16.647, 38.322



87, 5.744, 38.275



60, 27.834, 331.597



45, 4.102, 38.275



96, 0.011, 296.813



48, 0.006, 296.813

Same Dimension

The Same Dimension uses a secret algorithm to generate beautiful new colors.



61, 16.647, 38.322



75, 25.402, 38.420



67, 18.692, 89.099



36, 3.331, 38.275



33, 67.526, 43.464



3, 8.020, 33.619

Inverse Universe

The Inverse Universe completely reimagines the original color for something new.



66, 13.910, 219.518



83, 20.264, 219.906



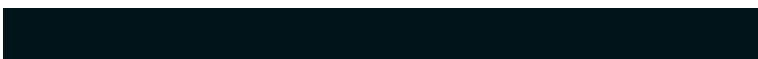
60, 18.680, 276.337



37, 3.144, 218.822



48, 29.866, 233.118



5, 7.525, 227.902

Previews

White Background



This preview shows how the CIELCh color 61, 16.648, 38.314 looks on a white background.

Color Contrast Check

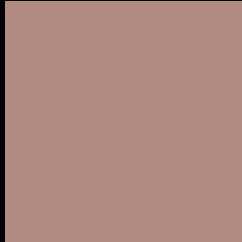
Large Text (above 18pt) WCAG AA ✓ Pass

Any Text WCAG AA × Fail

Large Text (above 18pt) WCAG AAA × Fail

Any Text WCAG AAA × Fail

Black Background



This preview shows how the CIELCh color 61, 16.648, 38.314 looks on a black background.

Color Contrast Check

Large Text (above 18pt) WCAG AA ✓ Pass

Any Text WCAG AA ✓ Pass

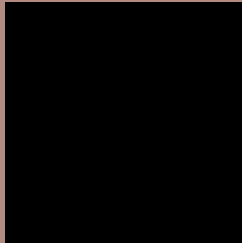
Large Text (above 18pt) WCAG AAA ✓ Pass

Any Text WCAG AAA × Fail

If you want to check with other color combinations, try the [Color Contrast Checker](#).

CIELCh 61, 16.648, 38.314

Background



This preview shows how black text looks on a background with the CIELCh color 61, 16.648, 38.314.



This preview shows how white text looks on a background with the CIELCh color 61, 16.648, 38.314.

Color Blindness Simulation

Color vision deficiency is a very complex topic, and I could not describe the different causes any better than Wikipedia does, so if you want to learn more, you should check out their [article about color blindness](#).

Dichromacy



Original Color

61, 16.648, 38.314

Protanopia

61, 7.665, 90.981

Deuteranopia

61, 13.057, 53.931



Tritanopia
61, 17.754, 1.104

Trichromacy



Original Color
61, 16.648, 38.314

Protanomaly
61, 9.989, 62.022

Deuteranomaly
61, 14.219, 48.451

Tritanomaly
61, 16.282, 13.244

Monochromacy



Original Color
61, 16.648, 38.314

Achromatopsia
62, 0.008, 296.813

Achromatomaly
61, 5.806, 36.630

CSS Examples

Text

The CSS property to change the color of the text to CIELCh 61, 16.648, 38.314 is called "color". The color property can be set on classes, ids or directly on the HTML element.

This example shows how text in the color `rgb(177, 139, 130)` looks like.

```
.text, #text, p{  
    color:rgb(177, 139, 130)  
}
```

If you want to add a text shadow in that color use the text-shadow property, you can generate a text shadow directly with our [CSS Text Shadow Generator](#).

Here you see how black text with a 4 pixel rgb(177, 139, 130) colored shadow looks like.

```
.shadow{ text-shadow: 4px 4px 2px rgb(177, 139, 130) }
```

Border

The CSS property to change the border of an element to CIELCh 61, 16.648, 38.314 is called "border". The border property can be set on classes, ids or directly on the HTML element.

This example shows the color as border, it can be applied via the CSS property "border" or "border-color".

```
.border, #border, table{ border:4px solid rgb(177, 139, 130) }
```

If only the border color should be changed use the property `border-color`.

```
.border{ border-color:rgb(177, 139, 130) }
```

If you want to add a box shadow in that color use:

Here you see how a box with a 4 pixel `rgb(177, 139, 130)` colored shadow looks like.

```
.boxshadow{ -moz-box-shadow:4px 4px 4px  
4px rgb(177, 139, 130); -webkit-box-  
shadow:4px 4px 4px 4px rgb(177, 139, 130);  
box-shadow:4px 4px 4px 4px rgb(177, 139,  
130) }
```

Background

The CSS property to change the background color of an element to CIELCh 61, 16.648, 38.314 is called "background". The background property can be set on classes, ids or directly on the HTML element.

```
.background, #background, body{  
background: rgb(177, 139, 130) }
```

If only the background color should be changed can be used:

```
.background{ background-color: rgb(177,  
139, 130) }
```

This example shows the color as background, it is applied via the CSS property "background".

To optimize and compress your CSS code, you can use our [online CSS compressor and optimizer](#) based on csstidy. If you want to create a linear or radial gradient as background or border, check our [CSS Gradient Generator](#).

Hey! You found this booklet interesting? Support Converting Colors with the new Membership Option!

The pro membership hides all ads, plus gives you double the colors in the color bucket, and more awesome pro features!

[Learn more, Memberships starting at \\$2.50/m!](#)

**Follow me
on Twitter!**

@ConvertingColor