

Converting Colors

CIELCh(61, 16.662, 38.655)

Have a look what the booklet for
CIELCh(61, 16.662, 38.655) contains.

CIELCh(61, 16.874, 40.044)	3
<i>Conversions</i>	4
<i>Details</i>	6
<i>Harmonies</i>	11
<i>Previews</i>	20
<i>Color Blindness Simulation</i>	23
<i>CSS Examples</i>	26

Color

CIELCh(61, 16.874, 40.044)

Conversions

Conversions Part 1

Format	Color
Hex	B18B81
RGB	177, 139, 129
RGB Percent	69%, 55%, 51%
CMY	0.3073, 0.4562, 0.4954
CMYK	0.00, 0.21, 0.27, 0.31
HSL	13°, 23%, 60%
HSV	13°, 27%, 69%
XYZ	31.1734, 29.2481, 24.6550
YIQ	149.2220, 25.8580, 4.9460

Conversions

Conversions Part 2

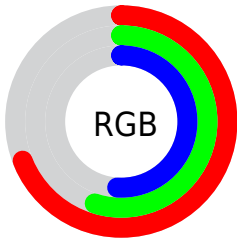
Format	Color
RYB	177, 142, 129
Decimal	11635585
CIELab	61.00, 12.92, 10.86
CIElCh	61, 16.874, 40.044
Yxy	29.2481, 0.3664, 0.3438
Android (android.graphics.Color)	4289825665 (0xFFB18B81)
YUV	149.2220, -9.9694, 24.3613
Hunter-Lab	54.0815, 8.2475, 10.8276

Details

The CIELCh color $61, 16.874, 40.044$ is a light color, and the websafe version is hex `CC9999`. A complement of this color would be $66, 14.071, 221.749$, and the grayscale version is $62, 0.008, 296.813$.

A 20% lighter version of the original color is $81, 16.627, 40.826$, and $41, 16.602, 40.194$ is the 20% darker color. If you saturate the color by 10%, you get $57, 24.056, 40.158$, and if you desaturate by 10%, it is $65, 10.231, 40.081$.

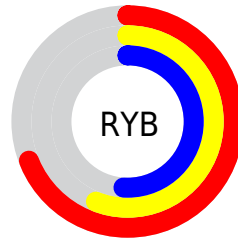
Distribution



Red (69%)

Green (55%)

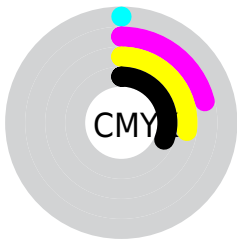
Blue (51%)



Red (69%)

Yellow (56%)

Blue (51%)

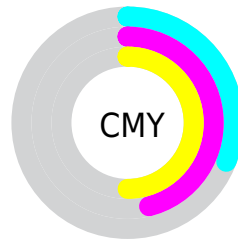


Cyan (0%)

Magenta (21%)

Yellow (27%)

Black (31%)



Cyan (31%)

Magenta (46%)

Yellow (50%)

Brightness & Saturation Gradients

These gradients show how the CIELCh color 61, 16.874, 40.044 changes by changing the brightness by 10 percent. The first figure shows a shift by +10% for each color and the second figure -10%.

Similar to the brightness gradients but the following saturation gradients show a change of the CIELCh color 61, 16.874, 40.044 by changing the saturation by 10% instead.

■ 61, 16.874, 40.044

■ 61, 16.874, 40.044

■ 100, 16.874,
40.044

■ 51, 16.874, 40.044

■ 81, 16.874, 40.044

■ 41, 16.874, 40.044

■ 91, 16.874, 40.044

■ 31, 16.874, 40.044

■ 21, 16.874, 40.044

■ 11, 16.874, 40.044

■ 1, 16.874, 40.044

■ 0, 16.874, 40.044

■ 61, 16.874, 40.044

■ 61, 16.874, 40.044

■ 57, 24.056, 40.158

■ 65, 10.231, 40.081

53, 31.792, 40.441

69, 4.099, 40.171

50, 40.048, 40.934

73, 1.567, 220.853

47, 48.721, 41.643

77, 6.816, 220.920

44, 57.562, 42.508

82, 11.693,
221.243

41, 66.009, 43.301

86, 16.243,
221.615

39, 73.041, 43.594

39, 74.992, 43.850

90, 20.506,
222.011

94, 23.527,
203.639

95, 24.931,
197.880

Harmonies

Complementary

The Complementary color scheme is a pair of colors which are on the opposite of each other on the color wheel.



61, 16.874, 40.044



66, 14.071, 221.749

Rectangle

The Rectangle color scheme consists of four colors that form a rectangle on the color wheel.



61, 16.874, 40.044



61, 16.874, 90.044



61, 16.874, 220.044



61, 16.874, 270.044

Sweetspot

The Sweet Spot groups the original color and five complimentary colors.



61, 16.873, 40.052



87, 5.690, 40.166



60, 28.099, 332.238



45, 4.064, 40.154



96, 0.011, 296.813



48, 0.006, 296.813

Same Dimension

The Same Dimension uses a secret algorithm to generate beautiful new colors.



61, 16.873, 40.052



75, 26.044, 40.101



67, 19.389, 90.323



36, 3.299, 40.156



34, 67.070, 44.038



3, 7.948, 35.045

Inverse Universe

The Inverse Universe completely reimagines the original color for something new.



66, 14.071, 221.749



82, 20.668, 222.250



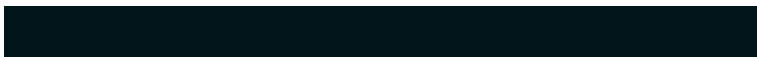
59, 19.477, 277.661



37, 3.117, 220.851



47, 30.092, 236.743



5, 7.494, 230.567

Previews

White Background



This preview shows how the CIELCh color 61, 16.874, 40.044 looks on a white background.

Color Contrast Check

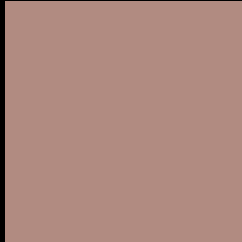
Large Text (above 18pt) WCAG AA ✓ Pass

Any Text WCAG AA × Fail

Large Text (above 18pt) WCAG AAA × Fail

Any Text WCAG AAA × Fail

Black Background



This preview shows how the CIELCh color 61, 16.874, 40.044 looks on a black background.

Color Contrast Check

Large Text (above 18pt) WCAG AA ✓ Pass

Any Text WCAG AA ✓ Pass

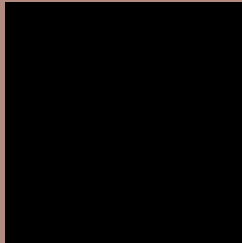
Large Text (above 18pt) WCAG AAA ✓ Pass

Any Text WCAG AAA × Fail

If you want to check with other color combinations, try the [Color Contrast Checker](#).

CIELCh 61, 16.874, 40.044

Background



This preview shows how black text looks on a background with the CIELCh color 61, 16.874, 40.044.



This preview shows how white text looks on a background with the CIELCh color 61, 16.874, 40.044.

Color Blindness Simulation

Color vision deficiency is a very complex topic, and I could not describe the different causes any better than Wikipedia does, so if you want to learn more, you should check out their [article about color blindness](#).

Dichromacy



Original Color

61, 16.874, 40.044

Protanopia

61, 8.201, 92.114

Deuteranopia

61, 13.755, 54.788



Tritanopia
61, 18.134, 1.601

Trichromacy



Original Color
61, 16.874, 40.044

Protanomaly
61, 10.392, 64.183

Deuteranomaly
61, 14.899, 49.495

Tritanomaly
61, 16.674, 15.392

Monochromacy



Original Color
61, 16.874, 40.044

Achromatopsia
62, 0.008, 296.813

Achromatomaly
61, 5.806, 36.630

CSS Examples

Text

The CSS property to change the color of the text to CIELCh 61, 16.874, 40.044 is called "color". The color property can be set on classes, ids or directly on the HTML element.

This example shows how text in the color `rgb(177, 139, 129)` looks like.

```
.text, #text, p{  
    color:rgb(177, 139, 129)  
}
```

If you want to add a text shadow in that color use the text-shadow property, you can generate a text shadow directly with our [CSS Text Shadow Generator](#).

Here you see how black text with a 4 pixel rgb(177, 139, 129) colored shadow looks like.

```
.shadow{ text-shadow: 4px 4px 2px rgb(177, 139, 129) }
```

Border

The CSS property to change the border of an element to CIELCh 61, 16.874, 40.044 is called "border". The border property can be set on classes, ids or directly on the HTML element.

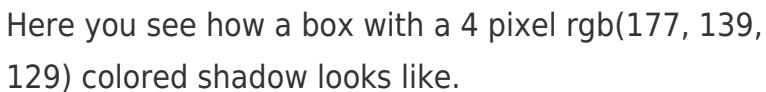
This example shows the color as border, it can be applied via the CSS property "border" or "border-color".

```
.border, #border, table{ border:4px solid rgb(177, 139, 129) }
```

If only the border color should be changed use the property `border-color`.

```
.border{ border-color:rgb(177, 139, 129) }
```

If you want to add a box shadow in that color use:



Here you see how a box with a 4 pixel `rgb(177, 139, 129)` colored shadow looks like.

```
.boxshadow{ -moz-box-shadow:4px 4px 4px 4px rgb(177, 139, 129); -webkit-box-shadow:4px 4px 4px 4px rgb(177, 139, 129); box-shadow:4px 4px 4px 4px rgb(177, 139, 129) }
```

Background

The CSS property to change the background color of an element to CIELCh 61, 16.874, 40.044 is called "background". The background property can be set on classes, ids or directly on the HTML element.

```
.background, #background, body{  
background: rgb(177, 139, 129) }
```

If only the background color should be changed can be used:

```
.background{ background-color: rgb(177,  
139, 129) }
```

This example shows the color as background, it is applied via the CSS property "background".

To optimize and compress your CSS code, you can use our [online CSS compressor and optimizer](#) based on csstidy. If you want to create a linear or radial gradient as background or border, check our [CSS Gradient Generator](#).

Hey! You found this booklet interesting? Support Converting Colors with the new Membership Option!

The pro membership hides all ads, plus gives you double the colors in the color bucket, and more awesome pro features!

[Learn more, Memberships starting at \\$2.50/m!](#)

**Follow me
on Twitter!**

@ConvertingColor