

Converting Colors

CIELCh(61, 19.359, 29.519)

Have a look what the booklet for
CIELCh(61, 19.359, 29.519) contains.

CIELCh(61, 19.359, 29.519)	3
<i>Conversions</i>	4
<i>Details</i>	6
<i>Harmonies</i>	11
<i>Previews</i>	20
<i>Color Blindness Simulation</i>	23
<i>CSS Examples</i>	26

Color

CIELCh(61, 19.359, 29.519)

Conversions

Conversions Part 1

Format	Color
Hex	B68883
RGB	182, 136, 131
RGB Percent	71%, 53%, 51%
CMY	0.2857, 0.4661, 0.4858
CMYK	0.00, 0.25, 0.28, 0.29
HSL	6°, 26%, 61%
HSV	6°, 28%, 71%
XYZ	32.2510, 29.2481, 25.4634
YIQ	149.1840, 29.0210, 8.1970

Conversions

Conversions Part 2

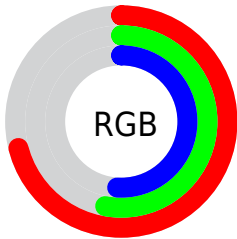
Format	Color
RYB	182, 137, 131
Decimal	11962499
CIELab	61.00, 16.85, 9.54
CIElCh	61, 19.359, 29.519
Yxy	29.2481, 0.3709, 0.3363
Android (android.graphics.Color)	4290152579 (0xFFB68883)
YUV	149.1840, -8.9647, 28.7796
Hunter-Lab	54.0815, 11.8041, 9.9414

Details

The CIELCh color **61, 19.359, 29.519** is a light color, and the websafe version is hex **CC9999**. A complement of this color would be **69, 15.925, 208.184**, and the grayscale version is **62, 0.008, 296.813**.

A 20% lighter version of the original color is **81, 19.293, 30.238**, and **41, 19.319, 29.111** is the 20% darker color. If you saturate the color by 10%, you get **57, 27.342, 30.310**, and if you desaturate by 10%, it is **66, 11.947, 28.958**.

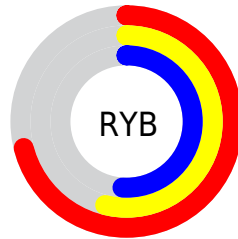
Distribution



Red (71%)

Green (53%)

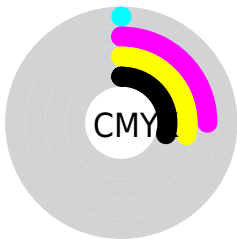
Blue (51%)



Red (71%)

Yellow (54%)

Blue (51%)

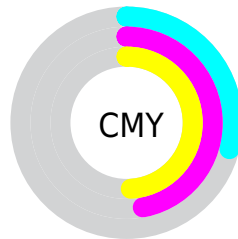


Cyan (0%)

Magenta (25%)

Yellow (28%)

Black (29%)



Cyan (29%)

Magenta (47%)

Yellow (49%)

Brightness & Saturation Gradients

These gradients show how the CIELCh color 61, 19.359, 29.519 changes by changing the brightness by 10 percent. The first figure shows a shift by +10% for each color and the second figure -10%.

Similar to the brightness gradients but the following saturation gradients show a change of the CIELCh color 61, 19.359, 29.519 by changing the saturation by 10% instead.

61, 19.359, 29.519

61, 19.359, 29.519

100, 19.359,
29.519

51, 19.359, 29.519

81, 19.359, 29.519

41, 19.359, 29.519

91, 19.359, 29.519

31, 19.359, 29.519

21, 19.359, 29.519

11, 19.359, 29.519

1, 19.359, 29.519

0, 19.359, 29.519

61, 19.359, 29.519

61, 19.359, 29.519

57, 27.342, 30.310

66, 11.947, 28.958

52, 35.870, 31.381

70, 5.099, 28.524

49, 44.852, 32.802

75, 1.220, 208.806

45, 54.109, 34.615

80, 7.057, 208.309

42, 63.317, 36.769

85, 12.461,
208.206

40, 71.817, 38.973

90, 17.483,
208.178

39, 78.471, 40.689

39, 79.735, 41.163

94, 22.148,
203.273

95, 23.380,
197.976

Harmonies

Complementary

The Complementary color scheme is a pair of colors which are on the opposite of each other on the color wheel.



61, 19.359, 29.519



69, 15.925, 208.184

Rectangle

The Rectangle color scheme consists of four colors that form a rectangle on the color wheel.



61, 19.359, 29.519



61, 19.359, 79.519



61, 19.359, 209.519



61, 19.359, 259.519

Sweetspot

The Sweet Spot groups the original color and five complimentary colors.



61, 19.358, 29.525



89, 6.317, 28.529



61, 32.188, 328.360



47, 4.554, 28.593



97, 0.011, 296.813



50, 0.007, 296.813

Same Dimension

The Same Dimension uses a secret algorithm to generate beautiful new colors.



61, 19.358, 29.525



74, 29.904, 30.012



67, 18.634, 80.256



36, 3.652, 28.581



33, 70.487, 41.086



3, 9.922, 25.826

Inverse Universe

The Inverse Universe completely reimagines the original color for something new.



69, 15.925, 208.184



87, 23.337, 208.241



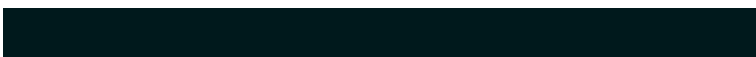
62, 17.937, 268.206



38, 3.440, 208.341



53, 30.930, 213.559



7, 9.146, 212.325

Previews

White Background



This preview shows how the CIELCh color 61, 19.359, 29.519 looks on a white background.

Color Contrast Check

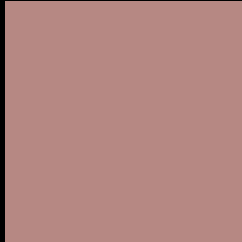
Large Text (above 18pt) WCAG AA ✓ Pass

Any Text WCAG AA ✗ Fail

Large Text (above 18pt) WCAG AAA ✗ Fail

Any Text WCAG AAA ✗ Fail

Black Background



This preview shows how the CIE LCh color 61, 19.359, 29.519 looks on a black background.

Color Contrast Check

Large Text (above 18pt) WCAG AA ✓ Pass

Any Text WCAG AA ✓ Pass

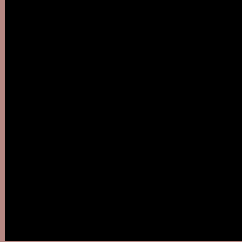
Large Text (above 18pt) WCAG AAA ✓ Pass

Any Text WCAG AAA × Fail

If you want to check with other color combinations, try the [Color Contrast Checker](#).

CIELCh 61, 19.359, 29.519

Background



This preview shows how black text looks on a background with the CIELCh color 61, 19.359, 29.519.



This preview shows how white text looks on a background with the CIELCh color 61, 19.359, 29.519.

Color Blindness Simulation

Color vision deficiency is a very complex topic, and I could not describe the different causes any better than Wikipedia does, so if you want to learn more, you should check out their [article about color blindness](#).

Dichromacy



Original Color

61, 19.359, 29.519

Protanopia

61, 6.083, 86.326

Deuteranopia

61, 12.723, 51.959



Tritanopia
61, 20.777, 6.157

Trichromacy



Original Color
61, 19.359, 29.519

Protanomaly
61, 9.659, 47.631

Deuteranomaly
61, 14.848, 42.607

Tritanomaly
61, 19.627, 14.990

Monochromacy



Original Color
61, 19.359, 29.519

Achromatopsia
62, 0.008, 296.813

Achromatomaly
61, 6.773, 24.727

CSS Examples

Text

The CSS property to change the color of the text to CIELCh 61, 19.359, 29.519 is called "color". The color property can be set on classes, ids or directly on the HTML element.

This example shows how text in the color `rgb(182, 136, 131)` looks like.

```
.text, #text, p{  
    color:rgb(182, 136, 131)  
}
```

If you want to add a text shadow in that color use the text-shadow property, you can generate a text shadow directly with our [CSS Text Shadow Generator](#).

Here you see how black text with a 4 pixel rgb(182, 136, 131) colored shadow looks like.

```
.shadow{ text-shadow: 4px 4px 2px rgb(182, 136, 131) }
```

Border

The CSS property to change the border of an element to CIELCh 61, 19.359, 29.519 is called "border". The border property can be set on classes, ids or directly on the HTML element.

This example shows the color as border, it can be applied via the CSS property "border" or "border-color".

```
.border, #border, table{ border:4px solid rgb(182, 136, 131) }
```

If only the border color should be changed use the property `border-color`.

```
.border{ border-color:rgb(182, 136, 131) }
```

If you want to add a box shadow in that color use:

Here you see how a box with a 4 pixel `rgb(182, 136, 131)` colored shadow looks like.

```
.boxshadow{ -moz-box-shadow:4px 4px 4px  
4px rgb(182, 136, 131); -webkit-box-  
shadow:4px 4px 4px 4px rgb(182, 136, 131);  
box-shadow:4px 4px 4px 4px rgb(182, 136,  
131) }
```

Background

The CSS property to change the background color of an element to CIELCh 61, 19.359, 29.519 is called "background". The background property can be set on classes, ids or directly on the HTML element.

```
.background, #background, body{  
background: rgb(182, 136, 131) }
```

If only the background color should be changed can be used:

```
.background{ background-color: rgb(182,  
136, 131) }
```

This example shows the color as background, it is applied via the CSS property "background".

To optimize and compress your CSS code, you can use our [online CSS compressor and optimizer](#) based on csstidy. If you want to create a linear or radial gradient as background or border, check our [CSS Gradient Generator](#).

Hey! You found this booklet interesting? Support Converting Colors with the new Membership Option!

The pro membership hides all ads, plus gives you double the colors in the color bucket, and more awesome pro features!

[Learn more, Memberships starting at \\$2.50/m!](#)

**Follow me
on Twitter!**

@ConvertingColor