

Converting Colors

CIELCh(61, 19.783, 21.381)

Have a look what the booklet for
CIELCh(61, 19.783, 21.381) contains.

CIELCh(61, 19.735, 21.442)	3
<i>Conversions</i>	4
<i>Details</i>	6
<i>Harmonies</i>	11
<i>Previews</i>	20
<i>Color Blindness Simulation</i>	23
<i>CSS Examples</i>	26

Color

CIELCh(61, 19.735, 21.442)

Conversions

Conversions Part 1

Format	Color
Hex	B78787
RGB	183, 135, 135
RGB Percent	72%, 53%, 53%
CMY	0.2814, 0.4696, 0.4697
CMYK	0.00, 0.26, 0.26, 0.28
HSL	0°, 25%, 62%
HSV	0°, 26%, 72%
XYZ	32.6754, 29.2481, 26.9315
YIQ	149.3520, 28.6080, 10.1760

Conversions

Conversions Part 2

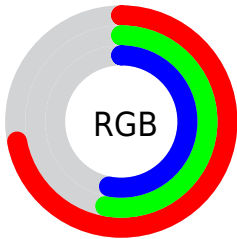
Format	Color
RYB	183, 135, 135
Decimal	12027783
CIELab	61.00, 18.37, 7.21
CIELCh	61, 19.735, 21.442
Yxy	29.2481, 0.3677, 0.3292
Android (android.graphics.Color)	4290217863 (0xFFB78787)
YUV	149.3520, -7.0755, 29.5093
Hunter-Lab	54.0815, 13.2048, 8.3318

Details

The CIELCh color **61, 19.735, 21.442** is a light color, and the websafe version is hex **CC9999**. A complement of this color would be **71, 16.572, 198.120**, and the grayscale version is **62, 0.008, 296.813**.

A 20% lighter version of the original color is **81, 19.999, 21.008**, and **41, 19.783, 22.264** is the 20% darker color. If you saturate the color by 10%, you get **56, 28.275, 22.691**, and if you desaturate by 10%, it is **66, 11.743, 20.481**.

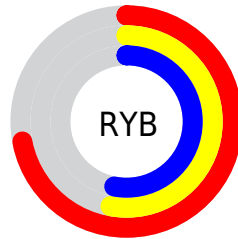
Distribution



Red (72%)

Green (53%)

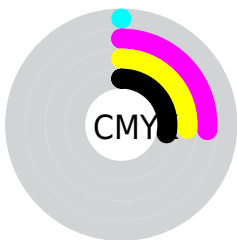
Blue (53%)



Red (72%)

Yellow (53%)

Blue (53%)

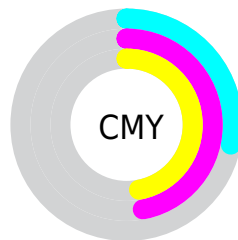


Cyan (0%)

Magenta (26%)

Yellow (26%)

Black (28%)



Cyan (28%)

Magenta (47%)

Yellow (47%)

Brightness & Saturation Gradients

These gradients show how the CIELCh color 61, 19.735, 21.442 changes by changing the brightness by 10 percent. The first figure shows a shift by +10% for each color and the second figure -10%.

Similar to the brightness gradients but the following saturation gradients show a change of the CIELCh color 61, 19.735, 21.442 by changing the saturation by 10% instead.

61, 19.735, 21.442

61, 19.735, 21.442

100, 19.735,
21.442

51, 19.735, 21.442

81, 19.735, 21.442

41, 19.735, 21.442

91, 19.735, 21.442

31, 19.735, 21.442

21, 19.735, 21.442

11, 19.735, 21.442

1, 19.735, 21.442

0, 19.735, 21.442

61, 19.735, 21.442

61, 19.735, 21.442

56, 28.275, 22.691

66, 11.743, 20.481

52, 37.284, 24.310

71, 4.323, 19.672

48, 46.597, 26.412

77, 2.543, 199.422

44, 55.961, 29.091

82, 8.898, 198.825

41, 65.021, 32.346

87, 14.790,
198.442

39, 73.216, 35.892

93, 20.273,
198.142

38, 79.405, 38.894

38, 81.585, 39.995

96, 23.061,
197.996

Harmonies

Complementary

The Complementary color scheme is a pair of colors which are on the opposite of each other on the color wheel.



61, 19.735, 21.442



71, 16.572, 198.120

Rectangle

The Rectangle color scheme consists of four colors that form a rectangle on the color wheel.



61, 19.735, 21.442



61, 19.735, 71.442



61, 19.735, 201.442



61, 19.735, 251.442

Sweetspot

The Sweet Spot groups the original color and five complimentary colors.



61, 19.733, 21.448



89, 6.927, 19.829



62, 32.034, 325.848



47, 4.992, 19.947



97, 0.011, 296.813



50, 0.007, 296.813

Same Dimension

The Same Dimension uses a secret algorithm to generate beautiful new colors.



61, 19.733, 21.448



74, 29.359, 22.067



67, 16.576, 72.197



36, 4.003, 19.924



32, 71.869, 39.600



2, 10.637, 19.412

Inverse Universe

The Inverse Universe completely reimagines the original color for something new.



71, 16.572, 198.120



89, 23.696, 197.884



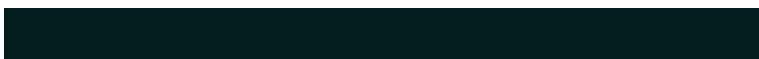
65, 15.448, 259.350



38, 3.777, 198.994



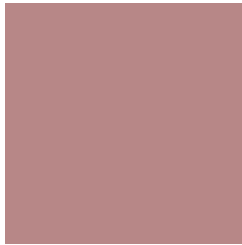
58, 34.638, 196.403



8, 10.516, 197.753

Previews

White Background



This preview shows how the CIELCh color 61, 19.735, 21.442 looks on a white background.

Color Contrast Check

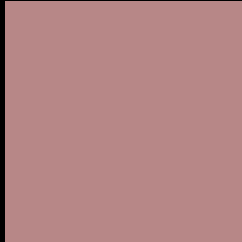
Large Text (above 18pt) WCAG AA ✓ Pass

Any Text WCAG AA ✗ Fail

Large Text (above 18pt) WCAG AAA ✗ Fail

Any Text WCAG AAA ✗ Fail

Black Background



This preview shows how the CIELCh color 61, 19.735, 21.442 looks on a black background.

Color Contrast Check

Large Text (above 18pt) WCAG AA ✓ Pass

Any Text WCAG AA ✓ Pass

Large Text (above 18pt) WCAG AAA ✓ Pass

Any Text WCAG AAA × Fail

If you want to check with other color combinations, try the [Color Contrast Checker](#).

CIELCh 61, 19.735, 21.442

Background



This preview shows how black text looks on a background with the CIELCh color 61, 19.735, 21.442.



This preview shows how white text looks on a background with the CIELCh color 61, 19.735, 21.442.

Color Blindness Simulation

Color vision deficiency is a very complex topic, and I could not describe the different causes any better than Wikipedia does, so if you want to learn more, you should check out their [article about color blindness](#).

Dichromacy



Original Color

61, 19.735, 21.442

Protanopia

61, 3.411, 74.554

Deuteranopia

61, 11.182, 43.781



Tritanopia
61, 20.777, 6.157

Trichromacy



Original Color
61, 19.735, 21.442

Protanomaly
61, 8.194, 31.910

Deuteranomaly
61, 13.988, 34.463

Tritanomaly
61, 20.559, 10.729

Monochromacy



Original Color
61, 19.735, 21.442

Achromatopsia
62, 0.008, 296.813

Achromatomaly
62, 6.724, 19.998

CSS Examples

Text

The CSS property to change the color of the text to CIELCh 61, 19.735, 21.442 is called "color". The color property can be set on classes, ids or directly on the HTML element.

This example shows how text in the color `rgb(183, 135, 135)` looks like.

```
.text, #text, p{  
    color:rgb(183, 135, 135)  
}
```

If you want to add a text shadow in that color use the text-shadow property, you can generate a text shadow directly with our [CSS Text Shadow Generator](#).

Here you see how black text with a 4 pixel rgb(183, 135, 135) colored shadow looks like.

```
.shadow{ text-shadow: 4px 4px 2px rgb(183, 135, 135) }
```

Border

The CSS property to change the border of an element to CIELCh 61, 19.735, 21.442 is called "border". The border property can be set on classes, ids or directly on the HTML element.

This example shows the color as border, it can be applied via the CSS property "border" or "border-color".

```
.border, #border, table{ border:4px solid rgb(183, 135, 135) }
```

If only the border color should be changed use the property `border-color`.

```
.border{ border-color:rgb(183, 135, 135) }
```

If you want to add a box shadow in that color use:

Here you see how a box with a 4 pixel `rgb(183, 135, 135)` colored shadow looks like.

```
.boxshadow{ -moz-box-shadow:4px 4px 4px  
4px rgb(183, 135, 135); -webkit-box-  
shadow:4px 4px 4px 4px rgb(183, 135, 135);  
box-shadow:4px 4px 4px 4px rgb(183, 135,  
135) }
```

Background

The CSS property to change the background color of an element to CIELCh 61, 19.735, 21.442 is called "background". The background property can be set on classes, ids or directly on the HTML element.

```
.background, #background, body{  
background: rgb(183, 135, 135) }
```

If only the background color should be changed can be used:

```
.background{ background-color: rgb(183,  
135, 135) }
```

This example shows the color as background, it is applied via the CSS property "background".

To optimize and compress your CSS code, you can use our [online CSS compressor and optimizer](#) based on csstidy. If you want to create a linear or radial gradient as background or border, check our [CSS Gradient Generator](#).

Hey! You found this booklet interesting? Support Converting Colors with the new Membership Option!

The pro membership hides all ads, plus gives you double the colors in the color bucket, and more awesome pro features!

[Learn more, Memberships starting at \\$2.50/m!](#)

**Follow me
on Twitter!**

@ConvertingColor