

Converting Colors

CIELCh(61, 19.878, 25.594)

Have a look what the booklet for
CIELCh(61, 19.878, 25.594) contains.

CIELCh(61, 19.888, 24.618)	3
<i>Conversions</i>	4
<i>Details</i>	6
<i>Harmonies</i>	11
<i>Previews</i>	20
<i>Color Blindness Simulation</i>	23
<i>CSS Examples</i>	26

Color

CIELCh(61, 19.888, 24.618)

Conversions

Conversions Part 1

Format	Color
Hex	B78785
RGB	183, 135, 133
RGB Percent	72%, 53%, 52%
CMY	0.2808, 0.4691, 0.4770
CMYK	0.00, 0.26, 0.27, 0.28
HSL	2°, 26%, 62%
HSV	2°, 27%, 72%
XYZ	32.5946, 29.2481, 26.2486
YIQ	149.1240, 29.2500, 9.5540

Conversions

Conversions Part 2

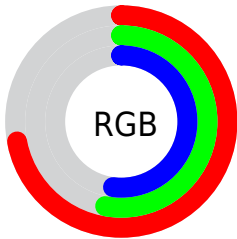
Format	Color
RYB	183, 135, 133
Decimal	12027781
CIELab	61.00, 18.08, 8.28
CIELCh	61, 19.888, 24.618
Yxy	29.2481, 0.3700, 0.3320
Android (android.graphics.Color)	4290217861 (0xFFB78785)
YUV	149.1240, -7.9491, 29.7093
Hunter-Lab	54.0815, 12.9383, 9.0806

Details

The CIELCh color **61, 19.888, 24.618** is a light color, and the websafe version is hex **CC9999**. A complement of this color would be **71, 16.504, 201.958**, and the grayscale version is **62, 0.008, 296.813**.

A 20% lighter version of the original color is **81, 20.117, 23.985**, and **41, 19.882, 23.963** is the 20% darker color. If you saturate the color by 10%, you get **56, 28.229, 25.704**, and if you desaturate by 10%, it is **66, 12.108, 23.800**.

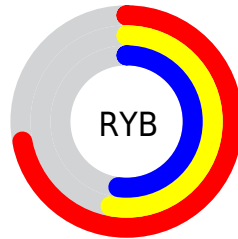
Distribution



Red (72%)

Green (53%)

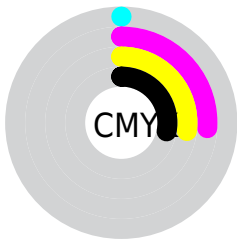
Blue (52%)



Red (72%)

Yellow (53%)

Blue (52%)

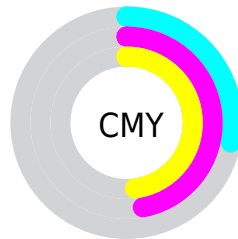


Cyan (0%)

Magenta (26%)

Yellow (27%)

Black (28%)



Cyan (28%)

Magenta (47%)

Yellow (48%)

Brightness & Saturation Gradients

These gradients show how the CIELCh color 61, 19.888, 24.618 changes by changing the brightness by 10 percent. The first figure shows a shift by +10% for each color and the second figure -10%.

Similar to the brightness gradients but the following saturation gradients show a change of the CIELCh color 61, 19.888, 24.618 by changing the saturation by 10% instead.

61, 19.888, 24.618

61, 19.888, 24.618

100, 19.888,
24.618

51, 19.888, 24.618

81, 19.888, 24.618

41, 19.888, 24.618

91, 19.888, 24.618

31, 19.888, 24.618

21, 19.888, 24.618

11, 19.888, 24.618

1, 19.888, 24.618

0, 19.888, 24.618

61, 19.888, 24.618

61, 19.888, 24.618

56, 28.229, 25.704

66, 12.108, 23.800

52, 37.075, 27.127

71, 4.901, 23.130

48, 46.293, 28.981

76, 1.759, 203.077

45, 55.658, 31.335

81, 7.916, 202.505

42, 64.827, 34.162

86, 13.620,
202.222

40, 73.173, 37.162

91, 18.922,
202.020

39, 79.504, 39.630

38, 81.076, 40.425

96, 23.022,
197.998

Harmonies

Complementary

The Complementary color scheme is a pair of colors which are on the opposite of each other on the color wheel.



61, 19.888, 24.618



71, 16.504, 201.958

Rectangle

The Rectangle color scheme consists of four colors that form a rectangle on the color wheel.



61, 19.888, 24.618



61, 19.888, 74.618



61, 19.888, 204.618



61, 19.888, 254.618

Sweetspot

The Sweet Spot groups the original color and five complimentary colors.



61, 19.886, 24.624



89, 6.660, 23.187



62, 32.624, 326.835



47, 4.800, 23.284



97, 0.011, 296.813



50, 0.007, 296.813

Same Dimension

The Same Dimension uses a secret algorithm to generate beautiful new colors.



61, 19.886, 24.624



74, 30.367, 25.265



67, 17.634, 75.486



36, 3.849, 23.265



32, 71.322, 40.178



2, 10.330, 21.922

Inverse Universe

The Inverse Universe completely reimagines the original color for something new.



71, 16.504, 201.958



88, 24.005, 201.805



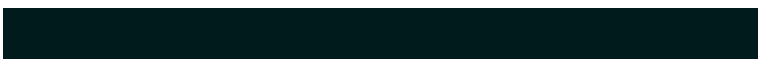
64, 16.632, 263.130



38, 3.628, 202.596



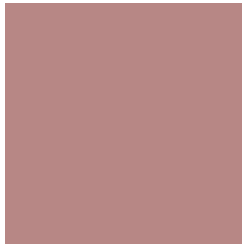
56, 32.829, 202.852



8, 9.872, 203.336

Previews

White Background



This preview shows how the CIELCh color 61, 19.888, 24.618 looks on a white background.

Color Contrast Check

Large Text (above 18pt) WCAG AA ✓ Pass

Any Text WCAG AA ✗ Fail

Large Text (above 18pt) WCAG AAA ✗ Fail

Any Text WCAG AAA ✗ Fail

Black Background



This preview shows how the CIELCh color 61, 19.888, 24.618 looks on a black background.

Color Contrast Check

Large Text (above 18pt) WCAG AA ✓ Pass

Any Text WCAG AA ✓ Pass

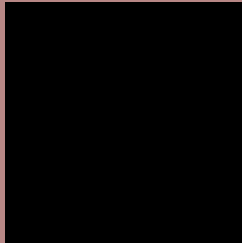
Large Text (above 18pt) WCAG AAA ✓ Pass

Any Text WCAG AAA × Fail

If you want to check with other color combinations, try the [Color Contrast Checker](#).

CIELCh 61, 19.888, 24.618

Background



This preview shows how black text looks on a background with the CIELCh color 61, 19.888, 24.618.



This preview shows how white text looks on a background with the CIELCh color 61, 19.888, 24.618.

Color Blindness Simulation

Color vision deficiency is a very complex topic, and I could not describe the different causes any better than Wikipedia does, so if you want to learn more, you should check out their [article about color blindness](#).

Dichromacy



Original Color

61, 19.888, 24.618

Protanopia

61, 4.381, 82.845

Deuteranopia

61, 11.734, 48.613



Tritanopia
61, 21.171, 6.508

Trichromacy



Original Color
61, 19.888, 24.618

Protanomaly
61, 8.539, 39.179

Deuteranomaly
61, 14.379, 38.661

Tritanomaly
61, 20.518, 12.271

Monochromacy



Original Color
61, 19.888, 24.618

Achromatopsia
62, 0.008, 296.813

Achromatomaly
61, 7.176, 24.502

CSS Examples

Text

The CSS property to change the color of the text to CIELCh 61, 19.888, 24.618 is called "color". The color property can be set on classes, ids or directly on the HTML element.

This example shows how text in the color `rgb(183, 135, 133)` looks like.

```
.text, #text, p{  
    color:rgb(183, 135, 133)  
}
```

If you want to add a text shadow in that color use the text-shadow property, you can generate a text shadow directly with our [CSS Text Shadow Generator](#).

Here you see how black text with a 4 pixel rgb(183, 135, 133) colored shadow looks like.

```
.shadow{ text-shadow: 4px 4px 2px rgb(183, 135, 133) }
```

Border

The CSS property to change the border of an element to CIELCh 61, 19.888, 24.618 is called "border". The border property can be set on classes, ids or directly on the HTML element.

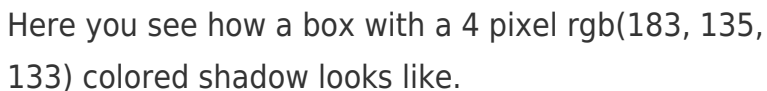
This example shows the color as border, it can be applied via the CSS property "border" or "border-color".

```
.border, #border, table{ border:4px solid rgb(183, 135, 133) }
```

If only the border color should be changed use the property `border-color`.

```
.border{ border-color:rgb(183, 135, 133) }
```

If you want to add a box shadow in that color use:



Here you see how a box with a 4 pixel `rgb(183, 135, 133)` colored shadow looks like.

```
.boxshadow{ -moz-box-shadow:4px 4px 4px 4px rgb(183, 135, 133); -webkit-box-shadow:4px 4px 4px 4px rgb(183, 135, 133); box-shadow:4px 4px 4px 4px rgb(183, 135, 133) }
```

Background

The CSS property to change the background color of an element to CIELCh 61, 19.888, 24.618 is called "background". The background property can be set on classes, ids or directly on the HTML element.

```
.background, #background, body{  
background: rgb(183, 135, 133) }
```

If only the background color should be changed can be used:

```
.background{ background-color: rgb(183,  
135, 133) }
```

This example shows the color as background, it is applied via the CSS property "background".

To optimize and compress your CSS code, you can use our [online CSS compressor and optimizer](#) based on csstidy. If you want to create a linear or radial gradient as background or border, check our [CSS Gradient Generator](#).

Hey! You found this booklet interesting? Support Converting Colors with the new Membership Option!

The pro membership hides all ads, plus gives you double the colors in the color bucket, and more awesome pro features!

[Learn more, Memberships starting at \\$2.50/m!](#)

**Follow me
on Twitter!**

@ConvertingColor