

Converting Colors

CIELCh(61, 19.984, 37.989)

Have a look what the booklet for
CIELCh(61, 19.984, 37.989) contains.

| | |
|--|----|
| CIELCh(61, 20.026, 38.870) | 3 |
| <i>Conversions</i> | 4 |
| <i>Details</i> | 6 |
| <i>Harmonies</i> | 11 |
| <i>Previews</i> | 20 |
| <i>Color Blindness Simulation</i> | 23 |
| <i>CSS Examples</i> | 26 |

Color

CIELCh(61, 20.026, 38.870)

Conversions

Conversions Part 1

| Format | Color |
|---------------|---------------------------|
| Hex | B6897E |
| RGB | 182, 137, 126 |
| RGB Percent | 71%, 54%, 49% |
| CMY | 0.2872, 0.4636, 0.5067 |
| CMYK | 0.00, 0.25, 0.31, 0.29 |
| HSL | 12°, 28%, 60% |
| HSV | 12°, 31%, 71% |
| XYZ | 31.9043, 29.2481, 23.6313 |
| YIQ | 149.2010, 30.3510, 6.1190 |

Conversions

Conversions Part 2

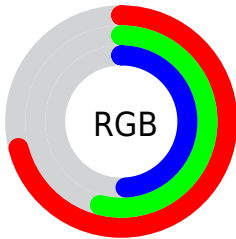
| Format | Color |
|-------------------------------------|--------------------------------|
| R_{YB} | 182, 140, 126 |
| Decimal | 11962750 |
| CIE Lab | 61.00, 15.59, 12.57 |
| CIE LCh | 61, 20.026, 38.870 |
| Yxy | 29.2481, 0.3763, 0.3450 |
| Android (android.graphics.Color) | 4290152830 (0xFFB6897E) |
| YUV | 149.2010, -11.4381, 28.7647 |
| Hunter-Lab | 54.0815, 10.6596, 11.9499 |

Details

The CIELCh color **61, 20.026, 38.870** is a dark color, and the websafe version is hex **CC9999**. A complement of this color would be **67, 16.202, 220.439**, and the grayscale version is **62, 0.008, 296.813**.

A 20% lighter version of the original color is **81, 19.910, 39.177**, and **41, 20.102, 39.014** is the 20% darker color. If you saturate the color by 10%, you get **57, 27.642, 39.121**, and if you desaturate by 10%, it is **65, 12.974, 38.794**.

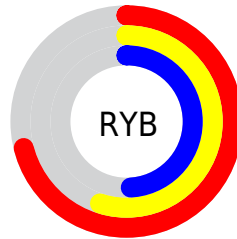
Distribution



Red (71%)

Green (54%)

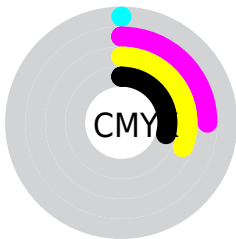
Blue (49%)



Red (71%)

Yellow (55%)

Blue (49%)

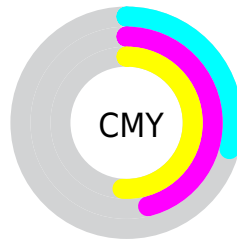


Cyan (0%)

Magenta (25%)

Yellow (31%)

Black (29%)



Cyan (29%)

Magenta (46%)

Yellow (51%)

Brightness & Saturation Gradients

These gradients show how the CIELCh color 61, 20.026, 38.870 changes by changing the brightness by 10 percent. The first figure shows a shift by +10% for each color and the second figure -10%.

Similar to the brightness gradients but the following saturation gradients show a change of the CIELCh color 61, 20.026, 38.870 by changing the saturation by 10% instead.

■ 61, 20.026, 38.870

■ 61, 20.026, 38.870

■ 100, 20.026,
38.870

■ 51, 20.026, 38.870

■ 81, 20.026, 38.870

■ 41, 20.026, 38.870

■ 91, 20.026, 38.870

■ 31, 20.026, 38.870

■ 21, 20.026, 38.870

■ 11, 20.026, 38.870

■ 1, 20.026, 38.870

■ 0, 20.026, 38.870

■ 61, 20.026, 38.870

■ 61, 20.026, 38.870

■ 57, 27.642, 39.121

■ 65, 12.974, 38.794

53, 35.821, 39.568

69, 6.465, 38.817

50, 44.503, 40.246

74, 0.457, 37.950

47, 53.532, 41.149

78, 5.099, 219.395

44, 62.557, 42.169

82, 10.251,
219.637

41, 70.794, 42.961

87, 15.046,
219.951

40, 77.044, 43.423

91, 19.529,
220.298

95, 23.030,
199.761

95, 23.485,
197.970

Harmonies

Complementary

The Complementary color scheme is a pair of colors which are on the opposite of each other on the color wheel.



61, 20.026, 38.870



67, 16.202, 220.439

Rectangle

The Rectangle color scheme consists of four colors that form a rectangle on the color wheel.



61, 20.026, 38.870



61, 20.026, 88.870



61, 20.026, 218.870



61, 20.026, 268.870

Sweetspot

The Sweet Spot groups the original color and five complimentary colors.



61, 20.025, 38.877



89, 6.645, 38.823



60, 32.962, 331.876



47, 4.682, 38.818



97, 0.011, 296.813



50, 0.007, 296.813

Same Dimension

The Same Dimension uses a secret algorithm to generate beautiful new colors.



61, 20.025, 38.877



75, 30.718, 39.023



68, 22.239, 88.541



37, 3.400, 38.822



34, 68.290, 43.629



3, 9.348, 33.156

Inverse Universe

The Inverse Universe completely reimagines the original color for something new.



67, 16.202, 220.439



84, 23.518, 220.987



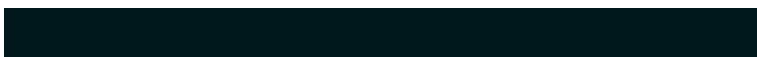
60, 22.229, 277.120



38, 3.210, 219.414



48, 30.289, 234.240



6, 8.547, 228.749

Previews

White Background



This preview shows how the CIELCh color 61, 20.026, 38.870 looks on a white background.

Color Contrast Check

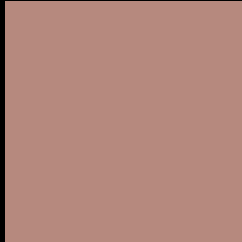
Large Text (above 18pt) WCAG AA ✓ Pass

Any Text WCAG AA ✗ Fail

Large Text (above 18pt) WCAG AAA ✗ Fail

Any Text WCAG AAA ✗ Fail

Black Background



This preview shows how the CIE LCh color 61, 20.026, 38.870 looks on a black background.

Color Contrast Check

Large Text (above 18pt) WCAG AA ✓ Pass

Any Text WCAG AA ✓ Pass

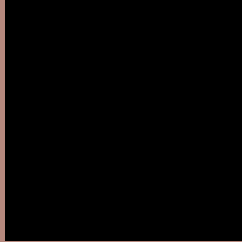
Large Text (above 18pt) WCAG AAA ✓ Pass

Any Text WCAG AAA × Fail

If you want to check with other color combinations, try the [Color Contrast Checker](#).

CIELCh 61, 20.026, 38.870

Background



This preview shows how black text looks on a background with the CIELCh color 61, 20.026, 38.870.



This preview shows how white text looks on a background with the CIELCh color 61, 20.026, 38.870.

Color Blindness Simulation

Color vision deficiency is a very complex topic, and I could not describe the different causes any better than Wikipedia does, so if you want to learn more, you should check out their [article about color blindness](#).

Dichromacy



Original Color

61, 20.026, 38.870

Protanopia

61, 9.395, 91.557

Deuteranopia

61, 15.196, 58.745



Tritanopia
61, 20.777, 6.157

Trichromacy



Original Color
61, 20.026, 38.870

Protanomaly
61, 11.732, 61.750

Deuteranomaly
61, 16.680, 50.557

Tritanomaly
61, 19.647, 18.225

Monochromacy



Original Color
61, 20.026, 38.870

Achromatopsia
62, 0.008, 296.813

Achromatomaly
61, 6.766, 39.196

CSS Examples

Text

The CSS property to change the color of the text to CIELCh 61, 20.026, 38.870 is called "color". The color property can be set on classes, ids or directly on the HTML element.

This example shows how text in the color `rgb(182, 137, 126)` looks like.

```
.text, #text, p{  
    color:rgb(182, 137, 126)  
}
```

If you want to add a text shadow in that color use the text-shadow property, you can generate a text shadow directly with our [CSS Text Shadow Generator](#).

Here you see how black text with a 4 pixel rgb(182, 137, 126) colored shadow looks like.

```
.shadow{ text-shadow: 4px 4px 2px rgb(182, 137, 126) }
```

Border

The CSS property to change the border of an element to CIELCh 61, 20.026, 38.870 is called "border". The border property can be set on classes, ids or directly on the HTML element.

This example shows the color as border, it can be applied via the CSS property "border" or "border-color".

```
.border, #border, table{ border:4px solid rgb(182, 137, 126) }
```

If only the border color should be changed use the property `border-color`.

```
.border{ border-color:rgb(182, 137, 126) }
```

If you want to add a box shadow in that color use:

Here you see how a box with a 4 pixel `rgb(182, 137, 126)` colored shadow looks like.

```
.boxshadow{ -moz-box-shadow:4px 4px 4px  
4px rgb(182, 137, 126); -webkit-box-  
shadow:4px 4px 4px 4px rgb(182, 137, 126);  
box-shadow:4px 4px 4px 4px rgb(182, 137,  
126) }
```

Background

The CSS property to change the background color of an element to CIELCh 61, 20.026, 38.870 is called "background". The background property can be set on classes, ids or directly on the HTML element.

```
.background, #background, body{  
background: rgb(182, 137, 126) }
```

If only the background color should be changed can be used:

```
.background{ background-color: rgb(182,  
137, 126) }
```

This example shows the color as background, it is applied via the CSS property "background".

To optimize and compress your CSS code, you can use our [online CSS compressor and optimizer](#) based on csstidy. If you want to create a linear or radial gradient as background or border, check our [CSS Gradient Generator](#).

Hey! You found this booklet interesting? Support Converting Colors with the new Membership Option!

The pro membership hides all ads, plus gives you double the colors in the color bucket, and more awesome pro features!

[Learn more, Memberships starting at \\$2.50/m!](#)

**Follow me
on Twitter!**

@ConvertingColor