

Converting Colors

CIELCh(61, 20.172, 21.534)

Have a look what the booklet for
CIELCh(61, 20.172, 21.534) contains.

CIELCh(61, 20.156, 21.487)	3
<i>Conversions</i>	4
<i>Details</i>	6
<i>Harmonies</i>	11
<i>Previews</i>	20
<i>Color Blindness Simulation</i>	23
<i>CSS Examples</i>	26

Color

CIELCh(61, 20.156, 21.487)

Conversions

Conversions Part 1

Format	Color
Hex	B88787
RGB	184, 135, 135
RGB Percent	72%, 53%, 53%
CMY	0.2786, 0.4707, 0.4708
CMYK	0.00, 0.27, 0.27, 0.28
HSL	0°, 26%, 63%
HSV	0°, 27%, 72%
XYZ	32.7836, 29.2481, 26.8232
YIQ	149.6510, 29.2040, 10.3880

Conversions

Conversions Part 2

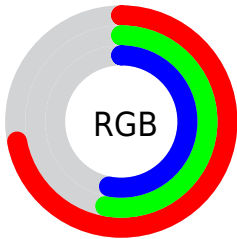
Format	Color
RYB	184, 135, 135
Decimal	12093319
CIELab	61.00, 18.76, 7.38
CIELCh	61, 20.156, 21.487
Yxy	29.2481, 0.3690, 0.3292
Android (android.graphics.Color)	4290283399 (0xFFB88787)
YUV	149.6510, -7.2229, 30.1241
Hunter-Lab	54.0815, 13.5618, 8.4507

Details

The CIELCh color **61, 20.156, 21.487** is a light color, and the websafe version is hex **CC9999**. A complement of this color would be **71, 16.871, 198.096**, and the grayscale version is **62, 0.008, 296.813**.

A 20% lighter version of the original color is **81, 20.028, 22.493**, and **41, 20.242, 22.332** is the 20% darker color. If you saturate the color by 10%, you get **56, 28.745, 22.751**, and if you desaturate by 10%, it is **66, 12.114, 20.516**.

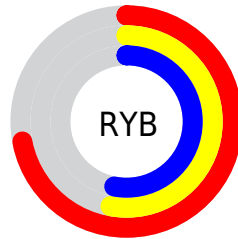
Distribution



Red (72%)

Green (53%)

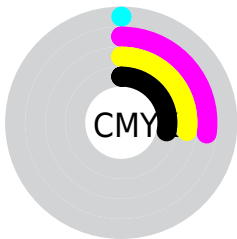
Blue (53%)



Red (72%)

Yellow (53%)

Blue (53%)

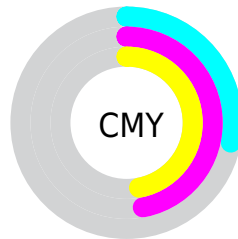


Cyan (0%)

Magenta (27%)

Yellow (27%)

Black (28%)



Cyan (28%)

Magenta (47%)

Yellow (47%)

Brightness & Saturation Gradients

These gradients show how the CIELCh color 61, 20.156, 21.487 changes by changing the brightness by 10 percent. The first figure shows a shift by +10% for each color and the second figure -10%.

Similar to the brightness gradients but the following saturation gradients show a change of the CIELCh color 61, 20.156, 21.487 by changing the saturation by 10% instead.

■ 61, 20.156, 21.487

■ 61, 20.156, 21.487

■ 100, 20.156,
21.487

■ 51, 20.156, 21.487

■ 81, 20.156, 21.487

■ 41, 20.156, 21.487

■ 91, 20.156, 21.487

■ 31, 20.156, 21.487

■ 21, 20.156, 21.487

■ 11, 20.156, 21.487

■ 1, 20.156, 21.487

■ 0, 20.156, 21.487

■ 61, 20.156, 21.487

■ 61, 20.156, 21.487

■ 56, 28.745, 22.751

■ 66, 12.114, 20.516

52, 37.800, 24.389

71, 4.646, 19.705

48, 47.151, 26.516

77, 2.265, 199.466

44, 56.538, 29.224

82, 8.661, 198.841

41, 65.602, 32.502

87, 14.590,
198.452

39, 73.762, 36.048

93, 20.107,
198.149

38, 79.872, 39.015

38, 81.819, 39.997

96, 22.860,
198.008

Harmonies

Complementary

The Complementary color scheme is a pair of colors which are on the opposite of each other on the color wheel.



61, 20.156, 21.487



71, 16.871, 198.096

Rectangle

The Rectangle color scheme consists of four colors that form a rectangle on the color wheel.



61, 20.156, 21.487



61, 20.156, 71.487



61, 20.156, 201.487



61, 20.156, 251.487

Sweetspot

The Sweet Spot groups the original color and five complimentary colors.



61, 20.154, 21.492



89, 6.988, 19.826



62, 32.659, 325.872



47, 4.992, 19.944



97, 0.011, 296.813



50, 0.007, 296.813

Same Dimension

The Same Dimension uses a secret algorithm to generate beautiful new colors.



61, 20.154, 21.492



74, 30.686, 22.195



67, 16.919, 72.143



36, 4.003, 19.921



32, 71.870, 39.600



2, 10.637, 19.409

Inverse Universe

The Inverse Universe completely reimagines the original color for something new.



71, 16.871, 198.096



90, 24.573, 197.836



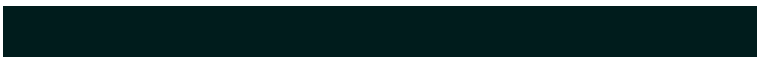
65, 15.746, 259.431



38, 3.777, 198.990



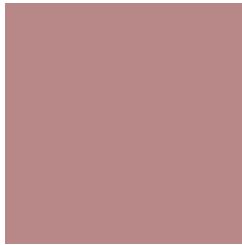
58, 34.640, 196.397



8, 10.517, 197.747

Previews

White Background



This preview shows how the CIELCh color 61, 20.156, 21.487 looks on a white background.

Color Contrast Check

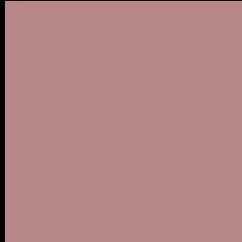
Large Text (above 18pt) WCAG AA ✓ Pass

Any Text WCAG AA ✗ Fail

Large Text (above 18pt) WCAG AAA ✗ Fail

Any Text WCAG AAA ✗ Fail

Black Background



This preview shows how the CIE LCh color 61, 20.156, 21.487 looks on a black background.

Color Contrast Check

Large Text (above 18pt) WCAG AA ✓ Pass

Any Text WCAG AA ✓ Pass

Large Text (above 18pt) WCAG AAA ✓ Pass

Any Text WCAG AAA × Fail

If you want to check with other color combinations, try the [Color Contrast Checker](#).

CIELCh 61, 20.156, 21.487

Background



This preview shows how black text looks on a background with the CIELCh color 61, 20.156, 21.487.



This preview shows how white text looks on a background with the CIELCh color 61, 20.156, 21.487.

Color Blindness Simulation

Color vision deficiency is a very complex topic, and I could not describe the different causes any better than Wikipedia does, so if you want to learn more, you should check out their [article about color blindness](#).

Dichromacy



Original Color

61, 20.156, 21.487

Protanopia

61, 3.886, 79.225

Deuteranopia

61, 11.182, 43.781



Tritanopia
61, 21.171, 6.508

Trichromacy



Original Color
61, 20.156, 21.487

Protanomaly
61, 8.746, 34.935

Deuteranomaly
61, 14.257, 31.979

Tritanomaly
61, 20.965, 10.994

Monochromacy



Original Color
61, 20.156, 21.487

Achromatopsia
62, 0.008, 296.813

Achromatomaly
62, 6.724, 19.998

CSS Examples

Text

The CSS property to change the color of the text to CIELCh 61, 20.156, 21.487 is called "color". The color property can be set on classes, ids or directly on the HTML element.

This example shows how text in the color `rgb(184, 135, 135)` looks like.

```
.text, #text, p{  
    color:rgb(184, 135, 135)  
}
```

If you want to add a text shadow in that color use the text-shadow property, you can generate a text shadow directly with our [CSS Text Shadow Generator](#).

Here you see how black text with a 4 pixel rgb(184, 135, 135) colored shadow looks like.

```
.shadow{ text-shadow: 4px 4px 2px rgb(184, 135, 135) }
```

Border

The CSS property to change the border of an element to CIELCh 61, 20.156, 21.487 is called "border". The border property can be set on classes, ids or directly on the HTML element.

This example shows the color as border, it can be applied via the CSS property "border" or "border-color".

```
.border, #border, table{ border:4px solid rgb(184, 135, 135) }
```

If only the border color should be changed use the property `border-color`.

```
.border{ border-color:rgb(184, 135, 135) }
```

If you want to add a box shadow in that color use:

Here you see how a box with a 4 pixel `rgb(184, 135, 135)` colored shadow looks like.

```
.boxshadow{ -moz-box-shadow:4px 4px 4px  
4px rgb(184, 135, 135); -webkit-box-  
shadow:4px 4px 4px 4px rgb(184, 135, 135);  
box-shadow:4px 4px 4px 4px rgb(184, 135,  
135) }
```

Background

The CSS property to change the background color of an element to CIELCh 61, 20.156, 21.487 is called "background". The background property can be set on classes, ids or directly on the HTML element.

```
.background, #background, body{  
background: rgb(184, 135, 135) }
```

If only the background color should be changed can be used:

```
.background{ background-color: rgb(184,  
135, 135) }
```

This example shows the color as background, it is applied via the CSS property "background".

To optimize and compress your CSS code, you can use our [online CSS compressor and optimizer](#) based on csstidy. If you want to create a linear or radial gradient as background or border, check our [CSS Gradient Generator](#).

Hey! You found this booklet interesting? Support Converting Colors with the new Membership Option!

The pro membership hides all ads, plus gives you double the colors in the color bucket, and more awesome pro features!

[Learn more, Memberships starting at \\$2.50/m!](#)

**Follow me
on Twitter!**

@ConvertingColor