

Converting Colors

CIELCh(61, 20.241, 34.179)

Have a look what the booklet for
CIELCh(61, 20.241, 34.179) contains.

CIELCh(61, 20.270, 33.926)	3
<i>Conversions</i>	4
<i>Details</i>	6
<i>Harmonies</i>	11
<i>Previews</i>	20
<i>Color Blindness Simulation</i>	23
<i>CSS Examples</i>	26

Color

CIELCh(61, 20.270, 33.926)

Conversions

Conversions Part 1

Format	Color
Hex	B78880
RGB	183, 136, 128
RGB Percent	72%, 53%, 50%
CMY	0.2822, 0.4665, 0.4979
CMYK	0.00, 0.26, 0.30, 0.28
HSL	9°, 28%, 61%
HSV	9°, 30%, 72%
XYZ	32.2436, 29.2481, 24.3789
YIQ	149.1410, 30.5800, 7.4760

Conversions

Conversions Part 2

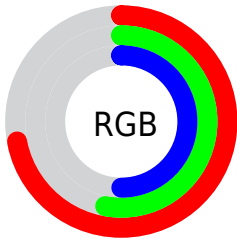
Format	Color
RYB	183, 137, 128
Decimal	12028032
CIELab	61.00, 16.82, 11.31
CIELCh	61, 20.270, 33.926
Yxy	29.2481, 0.3755, 0.3406
Android (android.graphics.Color)	4290218112 (0xFFB78880)
YUV	149.1410, -10.4225, 29.6943
Hunter-Lab	54.0815, 11.7795, 11.1303

Details

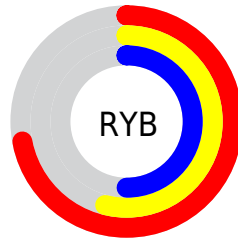
The CIELCh color **61, 20.270, 33.926** is a light color, and the websafe version is hex **CC9999**. A complement of this color would be **69, 16.413, 213.858**, and the grayscale version is **62, 0.008, 296.813**.

A 20% lighter version of the original color is **81, 20.135, 34.410**, and **41, 20.347, 33.842** is the 20% darker color. If you saturate the color by 10%, you get **57, 28.141, 34.484**, and if you desaturate by 10%, it is **65, 12.974, 33.576**.

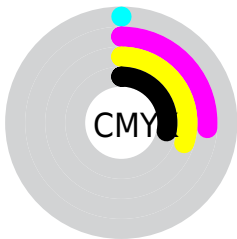
Distribution



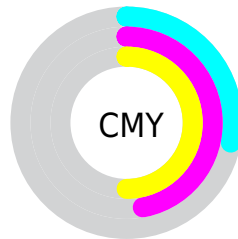
- Red (72%)
- Green (53%)
- Blue (50%)



- Red (72%)
- Yellow (54%)
- Blue (50%)



- Cyan (0%)
- Magenta (26%)
- Yellow (30%)
- Black (28%)



- Cyan (28%)
- Magenta (47%)
- Yellow (50%)

Brightness & Saturation Gradients

These gradients show how the CIELCh color 61, 20.270, 33.926 changes by changing the brightness by 10 percent. The first figure shows a shift by +10% for each color and the second figure -10%.

Similar to the brightness gradients but the following saturation gradients show a change of the CIELCh color 61, 20.270, 33.926 by changing the saturation by 10% instead.

61, 20.270, 33.926

61, 20.270, 33.926

100, 20.270,
33.926

51, 20.270, 33.926

81, 20.270, 33.926

41, 20.270, 33.926

91, 20.270, 33.926

31, 20.270, 33.926

21, 20.270, 33.926

11, 20.270, 33.926

1, 20.270, 33.926

0, 20.270, 33.926

61, 20.270, 33.926

61, 20.270, 33.926

57, 28.141, 34.484

65, 12.974, 33.576

53, 36.572, 35.285

70, 6.240, 33.349

49, 45.487, 36.382

74, 0.030, 15.975

46, 54.713, 37.787

79, 5.707, 213.483

43, 63.897, 39.411

84, 11.018,
213.532

41, 72.275, 40.909

88, 15.952,
213.658

39, 78.944, 42.068

93, 20.473,
212.141

96, 23.124,
197.992

Harmonies

Complementary

The Complementary color scheme is a pair of colors which are on the opposite of each other on the color wheel.



61, 20.270, 33.926



69, 16.413, 213.858

Rectangle

The Rectangle color scheme consists of four colors that form a rectangle on the color wheel.



61, 20.270, 33.926



61, 20.270, 83.926



61, 20.270, 213.926



61, 20.270, 263.926

Sweetspot

The Sweet Spot groups the original color and five complimentary colors.



61, 20.269, 33.932



89, 6.872, 33.330



60, 33.487, 330.089



47, 4.843, 33.360



97, 0.011, 296.813



50, 0.007, 296.813

Same Dimension

The Same Dimension uses a secret algorithm to generate beautiful new colors.



61, 20.269, 33.932



74, 30.787, 34.268



68, 20.915, 84.491



36, 3.516, 33.334



33, 69.556, 42.136



3, 9.626, 29.249

Inverse Universe

The Inverse Universe completely reimagines the original color for something new.



69, 16.413, 213.858



85, 23.628, 214.137



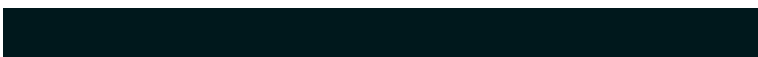
61, 20.510, 273.031



38, 3.314, 213.483



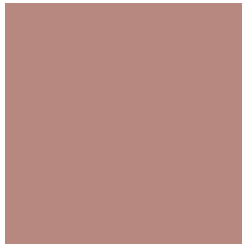
51, 30.172, 223.288



7, 8.759, 220.170

Previews

White Background



This preview shows how the CIELCh color 61, 20.270, 33.926 looks on a white background.

Color Contrast Check

Large Text (above 18pt) WCAG AA ✓ Pass

Any Text WCAG AA ✗ Fail

Large Text (above 18pt) WCAG AAA ✗ Fail

Any Text WCAG AAA ✗ Fail

Black Background



This preview shows how the CIE LCh color 61, 20.270, 33.926 looks on a black background.

Color Contrast Check

Large Text (above 18pt) WCAG AA ✓ Pass

Any Text WCAG AA ✓ Pass

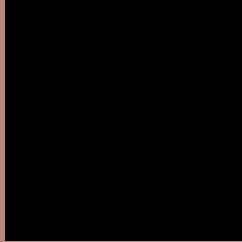
Large Text (above 18pt) WCAG AAA ✓ Pass

Any Text WCAG AAA × Fail

If you want to check with other color combinations, try the [Color Contrast Checker](#).

CIELCh 61, 20.270, 33.926

Background



This preview shows how black text looks on a background with the CIELCh color 61, 20.270, 33.926.



This preview shows how white text looks on a background with the CIELCh color 61, 20.270, 33.926.

Color Blindness Simulation

Color vision deficiency is a very complex topic, and I could not describe the different causes any better than Wikipedia does, so if you want to learn more, you should check out their [article about color blindness](#).

Dichromacy



Original Color

61, 20.270, 33.926

Protanopia

61, 7.665, 90.981

Deuteranopia

61, 14.111, 56.534



Tritanopia
61, 21.171, 6.508

Trichromacy



Original Color
61, 20.270, 33.926

Protanomaly
61, 10.611, 55.399

Deuteranomaly
61, 16.061, 47.341

Tritanomaly
61, 20.045, 16.758

Monochromacy



Original Color
61, 20.270, 33.926

Achromatopsia
62, 0.008, 296.813

Achromatomaly
61, 6.989, 33.855

CSS Examples

Text

The CSS property to change the color of the text to CIELCh 61, 20.270, 33.926 is called "color". The color property can be set on classes, ids or directly on the HTML element.

This example shows how text in the color `rgb(183, 136, 128)` looks like.

```
.text, #text, p{  
    color:rgb(183, 136, 128)  
}
```

If you want to add a text shadow in that color use the text-shadow property, you can generate a text shadow directly with our [CSS Text Shadow Generator](#).

Here you see how black text with a 4 pixel rgb(183, 136, 128) colored shadow looks like.

```
.shadow{ text-shadow: 4px 4px 2px rgb(183, 136, 128) }
```

Border

The CSS property to change the border of an element to CIELCh 61, 20.270, 33.926 is called "border". The border property can be set on classes, ids or directly on the HTML element.

This example shows the color as border, it can be applied via the CSS property "border" or "border-color".

```
.border, #border, table{ border:4px solid rgb(183, 136, 128) }
```

If only the border color should be changed use the property `border-color`.

```
.border{ border-color:rgb(183, 136, 128) }
```

If you want to add a box shadow in that color use:

Here you see how a box with a 4 pixel `rgb(183, 136, 128)` colored shadow looks like.

```
.boxshadow{ -moz-box-shadow:4px 4px 4px 4px rgb(183, 136, 128); -webkit-box-shadow:4px 4px 4px 4px rgb(183, 136, 128); box-shadow:4px 4px 4px 4px rgb(183, 136, 128) }
```

Background

The CSS property to change the background color of an element to CIELCh 61, 20.270, 33.926 is called "background". The background property can be set on classes, ids or directly on the HTML element.

```
.background, #background, body{  
background: rgb(183, 136, 128) }
```

If only the background color should be changed can be used:

```
.background{ background-color: rgb(183,  
136, 128) }
```

This example shows the color as background, it is applied via the CSS property "background".

To optimize and compress your CSS code, you can use our [online CSS compressor and optimizer](#) based on csstidy. If you want to create a linear or radial gradient as background or border, check our [CSS Gradient Generator](#).

Hey! You found this booklet interesting? Support Converting Colors with the new Membership Option!

The pro membership hides all ads, plus gives you double the colors in the color bucket, and more awesome pro features!

[Learn more, Memberships starting at \\$2.50/m!](#)

**Follow me
on Twitter!**

@ConvertingColor