

Converting Colors

CIELCh(61, 20.615, 2.764)

Have a look what the booklet for
CIELCh(61, 20.615, 2.764) contains.

CIELCh(61, 20.615, 2.764)	3
<i>Conversions</i>	4
<i>Details</i>	6
<i>Harmonies</i>	11
<i>Previews</i>	20
<i>Color Blindness Simulation</i>	23
<i>CSS Examples</i>	26

Color

CIELCh(61, 20.615, 2.764)

Conversions

Conversions Part 1

Format	Color
Hex	B78692
RGB	183, 134, 146
RGB Percent	72%, 53%, 57%
CMY	0.2818, 0.4740, 0.4269
CMYK	0.00, 0.27, 0.20, 0.28
HSL	345°, 25%, 62%
HSV	345°, 27%, 72%
XYZ	33.3012, 29.2481, 31.1362
YIQ	150.0190, 25.3520, 14.1200

Conversions

Conversions Part 2

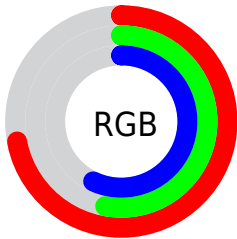
Format	Color
RYB	183, 134, 146
Decimal	12027538
CIELab	61.00, 20.59, 0.99
CIELCh	61, 20.615, 2.764
Yxy	29.2481, 0.3555, 0.3122
Android (android.graphics.Color)	4290217618 (0xFFB78692)
YUV	150.0190, -1.9814, 28.9243
Hunter-Lab	54.0815, 15.2703, 3.7222

Details

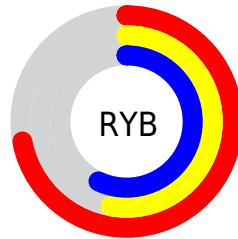
The CIELCh color **61, 20.615, 2.764** is a light color, and the websafe version is hex **CC9999**. A complement of this color would be **71, 18.754, 177.376**, and the grayscale version is **62, 0.008, 296.813**.

A 20% lighter version of the original color is **81, 20.503, 3.192**, and **41, 20.557, 2.187** is the 20% darker color. If you saturate the color by 10%, you get **56, 28.786, 4.241**, and if you desaturate by 10%, it is **66, 12.646, 1.528**.

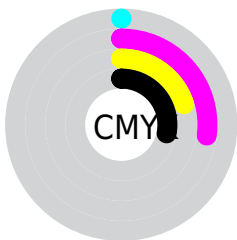
Distribution



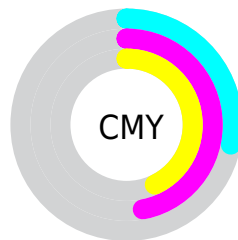
- Red (72%)
- Green (53%)
- Blue (57%)



- Red (72%)
- Yellow (53%)
- Blue (57%)



- Cyan (0%)
- Magenta (27%)
- Yellow (20%)
- Black (28%)



- Cyan (28%)
- Magenta (47%)
- Yellow (43%)

Brightness & Saturation Gradients

These gradients show how the CIELCh color 61, 20.615, 2.764 changes by changing the brightness by 10 percent. The first figure shows a shift by +10% for each color and the second figure -10%.

Similar to the brightness gradients but the following saturation gradients show a change of the CIELCh color 61, 20.615, 2.764 by changing the saturation by 10% instead.

61, 20.615, 2.764

61, 20.615, 2.764

100, 20.615, 2.764

51, 20.615, 2.764

81, 20.615, 2.764

41, 20.615, 2.764

91, 20.615, 2.764

31, 20.615, 2.764

21, 20.615, 2.764

11, 20.615, 2.764

1, 20.615, 2.764

0, 20.615, 2.764

61, 20.615, 2.764

61, 20.615, 2.764

56, 28.786, 4.241

66, 12.646, 1.528

52, 36.992, 6.035

71, 4.984, 0.429

48, 44.974, 8.264

76, 2.326, 179.821

44, 52.406, 11.072

81, 9.273, 178.879

42, 58.961, 14.620

87, 15.868,
178.156

40, 64.446, 19.025

92, 22.133,
177.518

39, 68.969, 24.212

95, 24.597,
183.210

38, 70.440, 25.865

96, 23.095,
197.994

Harmonies

Complementary

The Complementary color scheme is a pair of colors which are on the opposite of each other on the color wheel.



61, 20.615, 2.764



71, 18.754, 177.376

Rectangle

The Rectangle color scheme consists of four colors that form a rectangle on the color wheel.



61, 20.615, 2.764



61, 20.615, 52.764



61, 20.615, 182.764



61, 20.615, 232.764

Sweetspot

The Sweet Spot groups the original color and five complimentary colors.



61, 20.613, 2.768



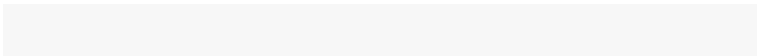
89, 7.302, 0.579



61, 30.672, 318.437



47, 5.250, 0.742



97, 0.011, 296.813



50, 0.007, 296.813

Same Dimension

The Same Dimension uses a secret algorithm to generate beautiful new colors.



61, 20.613, 2.768



74, 30.722, 3.584



64, 16.747, 44.448



36, 4.212, 0.710



32, 62.095, 25.078



2, 11.029, 4.863

Inverse Universe

The Inverse Universe completely reimagines the original color for something new.



61, 20.613, 2.768



74, 30.722, 3.584



68, 14.113, 227.272



36, 4.212, 0.710



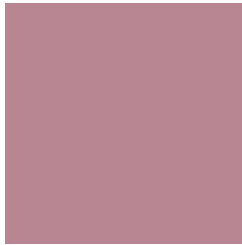
32, 62.095, 25.078



2, 11.029, 4.863

Previews

White Background



This preview shows how the CIELCh color 61, 20.615, 2.764 looks on a white background.

Color Contrast Check

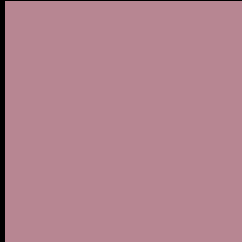
Large Text (above 18pt) WCAG AA ✓ Pass

Any Text WCAG AA ✗ Fail

Large Text (above 18pt) WCAG AAA ✗ Fail

Any Text WCAG AAA ✗ Fail

Black Background



This preview shows how the CIELCh color 61, 20.615, 2.764 looks on a black background.

Color Contrast Check

Large Text (above 18pt) WCAG AA ✓ Pass

Any Text WCAG AA ✓ Pass

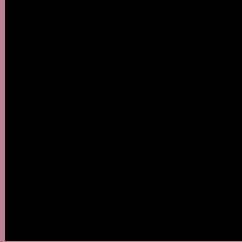
Large Text (above 18pt) WCAG AAA ✓ Pass

Any Text WCAG AAA × Fail

If you want to check with other color combinations, try the [Color Contrast Checker](#).

CIELCh 61, 20.615, 2.764

Background



This preview shows how black text looks on a background with the CIELCh color 61, 20.615, 2.764.



This preview shows how white text looks on a background with the CIELCh color 61, 20.615, 2.764.

Color Blindness Simulation

Color vision deficiency is a very complex topic, and I could not describe the different causes any better than Wikipedia does, so if you want to learn more, you should check out their [article about color blindness](#).

Dichromacy



Original Color

61, 20.615, 2.764

Protanopia

61, 3.408, 296.984

Deuteranopia

61, 7.997, 12.124



Tritanopia
61, 20.491, 4.270

Trichromacy



Original Color
61, 20.615, 2.764

Protanomaly
61, 8.981, 346.056

Deuteranomaly
61, 12.256, 7.489

Tritanomaly
61, 20.491, 4.270

Monochromacy



Original Color
61, 20.615, 2.764

Achromatopsia
62, 0.008, 296.813

Achromatomaly
61, 7.597, 358.515

CSS Examples

Text

The CSS property to change the color of the text to CIELCh 61, 20.615, 2.764 is called "color". The color property can be set on classes, ids or directly on the HTML element.

This example shows how text in the color `rgb(183, 134, 146)` looks like.

```
.text, #text, p{  
    color:rgb(183, 134, 146)  
}
```

If you want to add a text shadow in that color use the text-shadow property, you can generate a text shadow directly with our [CSS Text Shadow Generator](#).

Here you see how black text with a 4 pixel rgb(183, 134, 146) colored shadow looks like.

```
.shadow{ text-shadow: 4px 4px 2px rgb(183, 134, 146) }
```

Border

The CSS property to change the border of an element to CIELCh 61, 20.615, 2.764 is called "border". The border property can be set on classes, ids or directly on the HTML element.

This example shows the color as border, it can be applied via the CSS property "border" or "border-color".

```
.border, #border, table{ border:4px solid rgb(183, 134, 146) }
```

If only the border color should be changed use the property `border-color`.

```
.border{ border-color:rgb(183, 134, 146) }
```

If you want to add a box shadow in that color use:

Here you see how a box with a 4 pixel `rgb(183, 134, 146)` colored shadow looks like.

```
.boxshadow{ -moz-box-shadow:4px 4px 4px  
4px rgb(183, 134, 146); -webkit-box-  
shadow:4px 4px 4px 4px rgb(183, 134, 146);  
box-shadow:4px 4px 4px 4px rgb(183, 134,  
146) }
```

Background

The CSS property to change the background color of an element to CIELCh 61, 20.615, 2.764 is called "background". The background property can be set on classes, ids or directly on the HTML element.

```
.background, #background, body{  
background: rgb(183, 134, 146) }
```

If only the background color should be changed can be used:

```
.background{ background-color: rgb(183,  
134, 146) }
```

This example shows the color as background, it is applied via the CSS property "background".

To optimize and compress your CSS code, you can use our [online CSS compressor and optimizer](#) based on csstidy. If you want to create a linear or radial gradient as background or border, check our [CSS Gradient Generator](#).

Hey! You found this booklet interesting? Support Converting Colors with the new Membership Option!

The pro membership hides all ads, plus gives you double the colors in the color bucket, and more awesome pro features!

[Learn more, Memberships starting at \\$2.50/m!](#)

**Follow me
on Twitter!**

@ConvertingColor