

Converting Colors

CIELCh(61, 20.880, 39.206)

Have a look what the booklet for
CIELCh(61, 20.880, 39.206) contains.

CIELCh(61, 20.888, 38.217)	3
<i>Conversions</i>	4
<i>Details</i>	6
<i>Harmonies</i>	11
<i>Previews</i>	20
<i>Color Blindness Simulation</i>	23
<i>CSS Examples</i>	26

Color

CIELCh(61, 20.888, 38.217)

Conversions

Conversions Part 1

Format	Color
Hex	B7887D
RGB	183, 136, 125
RGB Percent	72%, 53%, 49%
CMY	0.2815, 0.4658, 0.5090
CMYK	0.00, 0.26, 0.32, 0.28
HSL	11°, 29%, 60%
HSV	11°, 32%, 72%
XYZ	32.1305, 29.2481, 23.4227
YIQ	148.7990, 31.5430, 6.5430

Conversions

Conversions Part 2

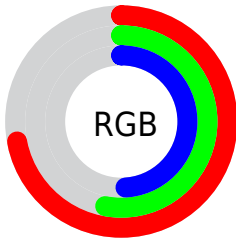
Format	Color
RYB	183, 139, 125
Decimal	12028029
CIELab	61.00, 16.41, 12.92
CIElCh	61, 20.888, 38.217
Yxy	29.2481, 0.3789, 0.3449
Android (android.graphics.Color)	4290218109 (0xFFB7887D)
YUV	148.7990, -11.7329, 29.9943
Hunter-Lab	54.0815, 11.4063, 12.1786

Details

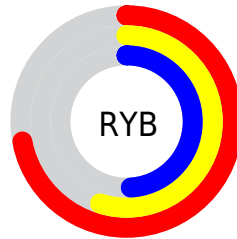
The CIELCh color **61, 20.888, 38.217** is a dark color, and the websafe version is hex **CC9999**. A complement of this color would be **68, 16.764, 219.607**, and the grayscale version is **62, 0.008, 296.813**.

A 20% lighter version of the original color is **81, 20.912, 36.894**, and **41, 21.062, 38.362** is the 20% darker color. If you saturate the color by 10%, you get **57, 28.637, 38.528**, and if you desaturate by 10%, it is **65, 13.710, 38.089**.

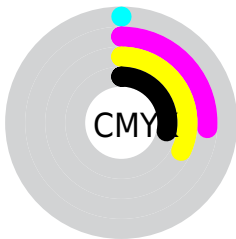
Distribution



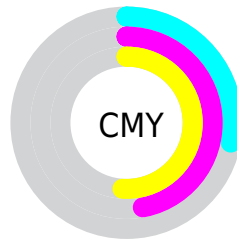
- Red (72%)
- Green (53%)
- Blue (49%)



- Red (72%)
- Yellow (55%)
- Blue (49%)



- Cyan (0%)
- Magenta (26%)
- Yellow (32%)
- Black (28%)



- Cyan (28%)
- Magenta (47%)
- Yellow (51%)

Brightness & Saturation Gradients

These gradients show how the CIELCh color 61, 20.888, 38.217 changes by changing the brightness by 10 percent. The first figure shows a shift by +10% for each color and the second figure -10%.

Similar to the brightness gradients but the following saturation gradients show a change of the CIELCh color 61, 20.888, 38.217 by changing the saturation by 10% instead.

61, 20.888, 38.217

61, 20.888, 38.217

100, 20.888,
38.217

51, 20.888, 38.217

81, 20.888, 38.217

41, 20.888, 38.217

91, 20.888, 38.217

31, 20.888, 38.217

21, 20.888, 38.217

11, 20.888, 38.217

1, 20.888, 38.217

0, 20.888, 38.217

61, 20.888, 38.217

61, 20.888, 38.217

57, 28.637, 38.528

65, 13.710, 38.089

■ 53, 36.950, 39.046

■ 69, 7.084, 38.072

■ 50, 45.757, 39.805

■ 74, 0.970, 37.741

■ 46, 54.888, 40.795

■ 78, 4.680, 218.579

■ 44, 63.958, 41.895

■ 83, 9.917, 218.782

■ 41, 72.116, 42.723

■ 87, 14.787,
219.065

■ 40, 77.732, 43.208

■ 92, 19.337,
219.386

■ 96, 23.063,
198.017

■ 96, 23.069,
197.995

Harmonies

Complementary

The Complementary color scheme is a pair of colors which are on the opposite of each other on the color wheel.



61, 20.888, 38.217



68, 16.764, 219.607

Rectangle

The Rectangle color scheme consists of four colors that form a rectangle on the color wheel.



61, 20.888, 38.217



61, 20.888, 88.217



61, 20.888, 218.217



61, 20.888, 268.217

Sweetspot

The Sweet Spot groups the original color and five complimentary colors.



61, 20.887, 38.223



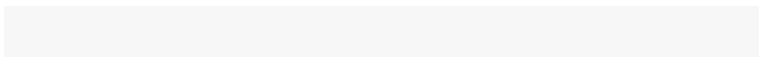
89, 6.671, 38.073



60, 34.100, 331.935



47, 4.701, 38.073



97, 0.011, 296.813



50, 0.007, 296.813

Same Dimension

The Same Dimension uses a secret algorithm to generate beautiful new colors.



61, 20.887, 38.223



74, 31.812, 38.415



68, 23.032, 88.424



37, 3.413, 38.073



34, 68.473, 43.408



3, 9.382, 32.625

Inverse Universe

The Inverse Universe completely reimagines the original color for something new.



68, 16.764, 219.607



84, 24.119, 220.149



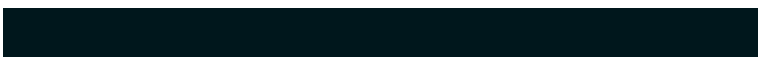
60, 23.024, 277.291



38, 3.222, 218.605



49, 30.215, 232.780



6, 8.563, 227.615

Previews

White Background



This preview shows how the CIELCh color 61, 20.888, 38.217 looks on a white background.

Color Contrast Check

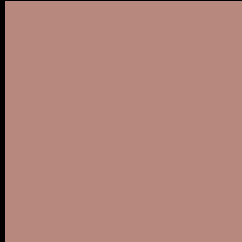
Large Text (above 18pt) WCAG AA ✓ Pass

Any Text WCAG AA ✗ Fail

Large Text (above 18pt) WCAG AAA ✗ Fail

Any Text WCAG AAA ✗ Fail

Black Background



This preview shows how the CIE LCh color 61, 20.888, 38.217 looks on a black background.

Color Contrast Check

Large Text (above 18pt) WCAG AA ✓ Pass

Any Text WCAG AA ✓ Pass

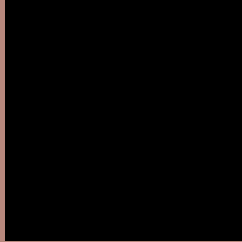
Large Text (above 18pt) WCAG AAA ✓ Pass

Any Text WCAG AAA × Fail

If you want to check with other color combinations, try the [Color Contrast Checker](#).

CIELCh 61, 20.888, 38.217

Background



This preview shows how black text looks on a background with the CIELCh color 61, 20.888, 38.217.



This preview shows how white text looks on a background with the CIELCh color 61, 20.888, 38.217.

Color Blindness Simulation

Color vision deficiency is a very complex topic, and I could not describe the different causes any better than Wikipedia does, so if you want to learn more, you should check out their [article about color blindness](#).

Dichromacy





Tritanopia
61, 21.689, 5.421

Trichromacy



Original Color
61, 20.888, 38.217

Protanomaly
61, 12.050, 60.431

Deuteranomaly
61, 17.379, 51.349

Tritanomaly
61, 20.492, 16.920

Monochromacy



Original Color
61, 20.888, 38.217

Achromatopsia
62, 0.008, 296.813

Achromatomaly
61, 7.162, 38.152

CSS Examples

Text

The CSS property to change the color of the text to CIELCh 61, 20.888, 38.217 is called "color". The color property can be set on classes, ids or directly on the HTML element.

This example shows how text in the color `rgb(183, 136, 125)` looks like.

```
.text, #text, p{  
    color:rgb(183, 136, 125)  
}
```

If you want to add a text shadow in that color use the text-shadow property, you can generate a text shadow directly with our [CSS Text Shadow Generator](#).

Here you see how black text with a 4 pixel rgb(183, 136, 125) colored shadow looks like.

```
.shadow{ text-shadow: 4px 4px 2px rgb(183, 136, 125) }
```

Border

The CSS property to change the border of an element to CIELCh 61, 20.888, 38.217 is called "border". The border property can be set on classes, ids or directly on the HTML element.

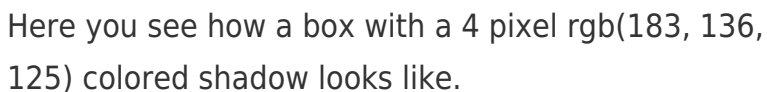
This example shows the color as border, it can be applied via the CSS property "border" or "border-color".

```
.border, #border, table{ border:4px solid rgb(183, 136, 125) }
```

If only the border color should be changed use the property `border-color`.

```
.border{ border-color:rgb(183, 136, 125) }
```

If you want to add a box shadow in that color use:



Here you see how a box with a 4 pixel `rgb(183, 136, 125)` colored shadow looks like.

```
.boxshadow{ -moz-box-shadow:4px 4px 4px 4px rgb(183, 136, 125); -webkit-box-shadow:4px 4px 4px 4px rgb(183, 136, 125); box-shadow:4px 4px 4px 4px rgb(183, 136, 125) }
```

Background

The CSS property to change the background color of an element to CIELCh 61, 20.888, 38.217 is called "background". The background property can be set on classes, ids or directly on the HTML element.

```
.background, #background, body{  
background: rgb(183, 136, 125) }
```

If only the background color should be changed can be used:

```
.background{ background-color: rgb(183,  
136, 125) }
```

This example shows the color as background, it is applied via the CSS property "background".

To optimize and compress your CSS code, you can use our [online CSS compressor and optimizer](#) based on csstidy. If you want to create a linear or radial gradient as background or border, check our [CSS Gradient Generator](#).

Hey! You found this booklet interesting? Support Converting Colors with the new Membership Option!

The pro membership hides all ads, plus gives you double the colors in the color bucket, and more awesome pro features!

[Learn more, Memberships starting at \\$2.50/m!](#)

**Follow me
on Twitter!**

@ConvertingColor