

Converting Colors

CIELCh(61, 22.324, 21.033)

Have a look what the booklet for
CIELCh(61, 22.324, 21.033) contains.

CIELCh(61, 22.697, 20.404)	3
<i>Conversions</i>	4
<i>Details</i>	6
<i>Harmonies</i>	11
<i>Previews</i>	20
<i>Color Blindness Simulation</i>	23
<i>CSS Examples</i>	26

Color

CIELCh(61, 22.697, 20.404)

Conversions

Conversions Part 1

Format	Color
Hex	BC8586
RGB	188, 133, 134
RGB Percent	74%, 52%, 53%
CMY	0.2622, 0.4779, 0.4740
CMYK	0.00, 0.29, 0.29, 0.26
HSL	359°, 29%, 63%
HSV	359°, 29%, 74%
XYZ	33.4948, 29.2481, 26.4844
YIQ	149.5590, 32.4590, 11.9710

Conversions

Conversions Part 2

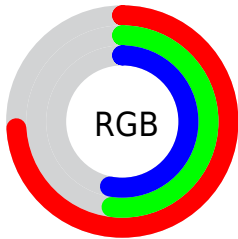
Format	Color
RYB	188, 133, 134
Decimal	12354950
CIELab	61.00, 21.27, 7.91
CIElCh	61, 22.697, 20.404
Yxy	29.2481, 0.3754, 0.3278
Android (android.graphics.Color)	4290545030 (0xFFBC8586)
YUV	149.5590, -7.6706, 33.7128
Hunter-Lab	54.0815, 15.9094, 8.8221

Details

The CIELCh color `61, 22.697, 20.404` is a light color, and the websafe version is hex `CC9999`. A complement of this color would be `73, 18.753, 196.294`, and the grayscale version is `62, 0.008, 296.813`.

A 20% lighter version of the original color is `81, 22.772, 19.948`, and `41, 22.540, 21.248` is the 20% darker color. If you saturate the color by 10%, you get `56, 31.512, 21.802`, and if you desaturate by 10%, it is `66, 14.394, 19.323`.

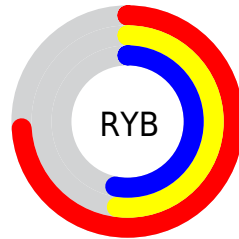
Distribution



Red (74%)

Green (52%)

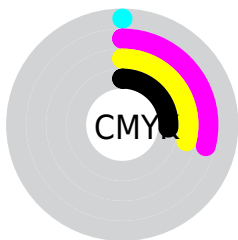
Blue (53%)



Red (74%)

Yellow (52%)

Blue (53%)

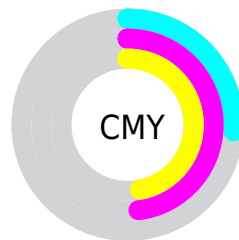


Cyan (0%)

Magenta (29%)

Yellow (29%)

Black (26%)



Cyan (26%)

Magenta (48%)

Yellow (47%)

Brightness & Saturation Gradients

These gradients show how the CIELCh color 61, 22.697, 20.404 changes by changing the brightness by 10 percent. The first figure shows a shift by +10% for each color and the second figure -10%.

Similar to the brightness gradients but the following saturation gradients show a change of the CIELCh color 61, 22.697, 20.404 by changing the saturation by 10% instead.

61, 22.697, 20.404

61, 22.697, 20.404

100, 22.697,
20.404

51, 22.697, 20.404

81, 22.697, 20.404

41, 22.697, 20.404

91, 22.697, 20.404

31, 22.697, 20.404

21, 22.697, 20.404

11, 22.697, 20.404

1, 22.697, 20.404

0, 22.697, 20.404

61, 22.697, 20.404

61, 22.697, 20.404

56, 31.512, 21.802

66, 14.394, 19.323

■ 52, 40.731, 23.604

■ 71, 6.654, 18.442

■ 48, 50.151, 25.929

■ 77, 0.528, 198.853

■ 44, 59.487, 28.864

■ 82, 7.186, 197.402

■ 42, 68.367, 32.375

■ 88, 13.366,
196.939

■ 40, 76.191, 36.095

■ 93, 19.117,
196.575

■ 39, 81.962, 39.066

■ 39, 82.388, 39.276

■ 96, 21.643,
198.084

Harmonies

Complementary

The Complementary color scheme is a pair of colors which are on the opposite of each other on the color wheel.



61, 22.697, 20.404



73, 18.753, 196.294

Rectangle

The Rectangle color scheme consists of four colors that form a rectangle on the color wheel.



61, 22.697, 20.404



61, 22.697, 70.404



61, 22.697, 200.404



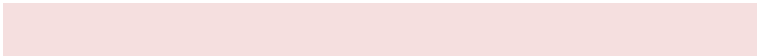
61, 22.697, 250.404

Sweetspot

The Sweet Spot groups the original color and five complimentary colors.



61, 22.695, 20.409



90, 8.028, 18.435



62, 36.160, 325.058



47, 5.607, 18.556



98, 0.011, 296.813



51, 0.007, 296.813

Same Dimension

The Same Dimension uses a secret algorithm to generate beautiful new colors.



61, 22.695, 20.409



74, 34.394, 21.249



67, 18.763, 68.286



37, 4.095, 18.452



32, 72.100, 38.938



3, 12.256, 18.361

Inverse Universe

The Inverse Universe completely reimagines the original color for something new.



61, 22.695, 20.409



74, 34.394, 21.249



65, 17.031, 256.122



37, 4.095, 18.452



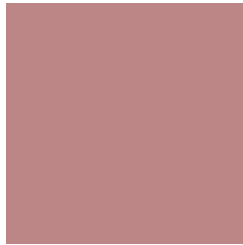
32, 72.100, 38.938



3, 12.256, 18.361

Previews

White Background



This preview shows how the CIELCh color 61, 22.697, 20.404 looks on a white background.

Color Contrast Check

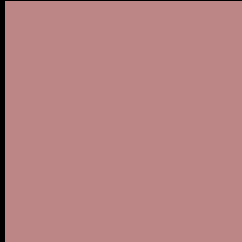
Large Text (above 18pt) WCAG AA ✓ Pass

Any Text WCAG AA ✗ Fail

Large Text (above 18pt) WCAG AAA ✗ Fail

Any Text WCAG AAA ✗ Fail

Black Background



This preview shows how the CIE LCh color 61, 22.697, 20.404 looks on a black background.

Color Contrast Check

Large Text (above 18pt) WCAG AA ✓ Pass

Any Text WCAG AA ✓ Pass

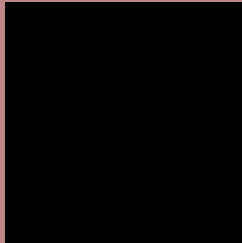
Large Text (above 18pt) WCAG AAA ✓ Pass

Any Text WCAG AAA × Fail

If you want to check with other color combinations, try the [Color Contrast Checker](#).

CIELCh 61, 22.697, 20.404

Background



This preview shows how black text looks on a background with the CIELCh color 61, 22.697, 20.404.

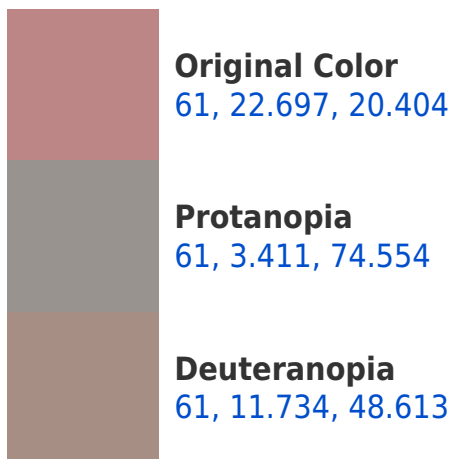


This preview shows how white text looks on a background with the CIELCh color 61, 22.697, 20.404.

Color Blindness Simulation

Color vision deficiency is a very complex topic, and I could not describe the different causes any better than Wikipedia does, so if you want to learn more, you should check out their [article about color blindness](#).

Dichromacy





Tritanopia
61, 23.613, 8.441

Trichromacy



Original Color
61, 22.697, 20.404

Protanomaly
61, 9.417, 30.489

Deuteranomaly
61, 15.245, 33.437

Tritanomaly
61, 23.474, 12.470

Monochromacy



Original Color
61, 22.697, 20.404

Achromatopsia
62, 0.008, 296.813

Achromatomaly
62, 7.946, 20.133

CSS Examples

Text

The CSS property to change the color of the text to CIELCh 61, 22.697, 20.404 is called "color". The color property can be set on classes, ids or directly on the HTML element.

This example shows how text in the color `rgb(188, 133, 134)` looks like.

```
.text, #text, p{  
    color:rgb(188, 133, 134)  
}
```

If you want to add a text shadow in that color use the text-shadow property, you can generate a text shadow directly with our [CSS Text Shadow Generator](#).

Here you see how black text with a 4 pixel rgb(188, 133, 134) colored shadow looks like.

```
.shadow{ text-shadow: 4px 4px 2px rgb(188, 133, 134) }
```

Border

The CSS property to change the border of an element to CIELCh 61, 22.697, 20.404 is called "border". The border property can be set on classes, ids or directly on the HTML element.

This example shows the color as border, it can be applied via the CSS property "border" or "border-color".

```
.border, #border, table{ border:4px solid rgb(188, 133, 134) }
```

If only the border color should be changed use the property `border-color`.

```
.border{ border-color:rgb(188, 133, 134) }
```

If you want to add a box shadow in that color use:

Here you see how a box with a 4 pixel `rgb(188, 133, 134)` colored shadow looks like.

```
.boxshadow{ -moz-box-shadow:4px 4px 4px  
4px rgb(188, 133, 134); -webkit-box-  
shadow:4px 4px 4px 4px rgb(188, 133, 134);  
box-shadow:4px 4px 4px 4px rgb(188, 133,  
134) }
```

Background

The CSS property to change the background color of an element to CIELCh 61, 22.697, 20.404 is called "background". The background property can be set on classes, ids or directly on the HTML element.

```
.background, #background, body{  
background: rgb(188, 133, 134) }
```

If only the background color should be changed can be used:

```
.background{ background-color: rgb(188,  
133, 134) }
```

This example shows the color as background, it is applied via the CSS property "background".

To optimize and compress your CSS code, you can use our [online CSS compressor and optimizer](#) based on csstidy. If you want to create a linear or radial gradient as background or border, check our [CSS Gradient Generator](#).

Hey! You found this booklet interesting? Support Converting Colors with the new Membership Option!

The pro membership hides all ads, plus gives you double the colors in the color bucket, and more awesome pro features!

[Learn more, Memberships starting at \\$2.50/m!](#)

**Follow me
on Twitter!**

@ConvertingColor