

Converting Colors

CIELCh(61, 22.929, 21.744)

Have a look what the booklet for
CIELCh(61, 22.929, 21.744) contains.

CIELCh(61, 22.760, 21.791)	3
<i>Conversions</i>	4
<i>Details</i>	6
<i>Harmonies</i>	11
<i>Previews</i>	20
<i>Color Blindness Simulation</i>	23
<i>CSS Examples</i>	26

Color

CIELCh(61, 22.760, 21.791)

Conversions

Conversions Part 1	
Format	Color
Hex	BC8585
RGB	188, 133, 133
RGB Percent	74%, 52%, 52%
CMY	0.2619, 0.4776, 0.4776
CMYK	0.00, 0.29, 0.29, 0.26
HSL	0°, 29%, 63%
HSV	0°, 29%, 74%
XYZ	33.4552, 29.2481, 26.1447
YIQ	149.4450, 32.7800, 11.6600

Conversions

Conversions Part 2

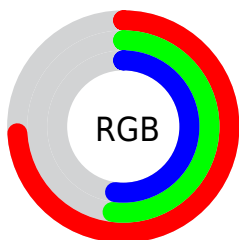
Format	Color
RYB	188, 133, 133
Decimal	12354949
CIELab	61.00, 21.13, 8.45
CIELCh	61, 22.760, 21.791
Yxy	29.2481, 0.3765, 0.3292
Android (android.graphics.Color)	4290545029 (0xFFBC8585)
YUV	149.4450, -8.1074, 33.8127
Hunter-Lab	54.0815, 15.7787, 9.1944

Details

The CIELCh color **61, 22.760, 21.791** is a light color, and the websafe version is hex **CC9999**. A complement of this color would be **73, 18.680, 197.980**, and the grayscale version is **62, 0.008, 296.813**.

A 20% lighter version of the original color is **81, 22.818, 21.260**, and **41, 22.540, 21.248** is the 20% darker color. If you saturate the color by 10%, you get **56, 31.648, 23.147**, and if you desaturate by 10%, it is **66, 14.414, 20.753**.

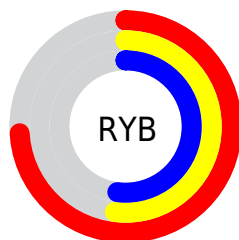
Distribution



Red (74%)

Green (52%)

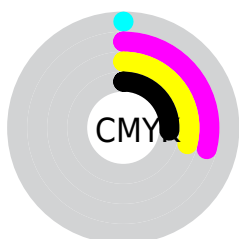
Blue (52%)



Red (74%)

Yellow (52%)

Blue (52%)

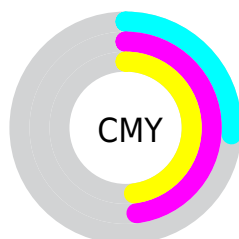


Cyan (0%)

Magenta (29%)

Yellow (29%)

Black (26%)



Cyan (26%)

Magenta (48%)

Yellow (48%)


Brightness & Saturation Gradients

These gradients show how the CIELCh color 61, 22.760, 21.791 changes by changing the brightness by 10 percent. The first figure shows a shift by +10% for each color and the second figure -10%.

Similar to the brightness gradients but the following saturation gradients show a change of the CIELCh color 61, 22.760, 21.791 by changing the saturation by 10% instead.

 61, 22.760, 21.791

 61, 22.760, 21.791

 100, 22.760,
21.791

 51, 22.760, 21.791

 81, 22.760, 21.791

 41, 22.760, 21.791

 91, 22.760, 21.791

 31, 22.760, 21.791

 21, 22.760, 21.791

 11, 22.760, 21.791

 1, 22.760, 21.791

 0, 22.760, 21.791

 61, 22.760, 21.791

 61, 22.760, 21.791

 56, 31.648, 23.147

 66, 14.414, 20.753

 52, 40.974, 24.908

 71, 6.654, 19.916

 48, 50.541, 27.187

 77, 0.532, 200.369


 44, 60.057, 30.061

 82, 7.179, 198.965


 42, 69.118, 33.467

 88, 13.337,
198.545

 40, 77.000, 36.965

 93, 19.060,
198.223

 39, 82.767, 39.769

 96, 21.623,
198.086

Harmonies

Complementary

The Complementary color scheme is a pair of colors which are on the opposite of each other on the color wheel.



61, 22.760, 21.791



73, 18.680, 197.980

Rectangle

The Rectangle color scheme consists of four colors that form a rectangle on the color wheel.



61, 22.760, 21.791



61, 22.760, 71.791



61, 22.760, 201.791



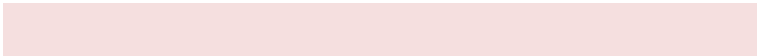
61, 22.760, 251.791

Sweetspot

The Sweet Spot groups the original color and five complimentary colors.



61, 22.758, 21.796



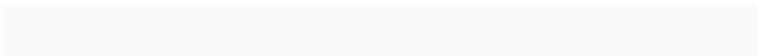
90, 8.029, 19.909



63, 36.488, 326.011



47, 5.609, 20.024



98, 0.011, 296.813



51, 0.007, 296.813

Same Dimension

The Same Dimension uses a secret algorithm to generate beautiful new colors.



61, 22.758, 21.796



74, 34.517, 22.610



68, 19.036, 71.815



37, 4.095, 19.926



32, 72.802, 39.666



3, 12.251, 19.411

Inverse Universe

The Inverse Universe completely reimagines the original color for something new.



73, 18.680, 197.980



91, 26.989, 197.711



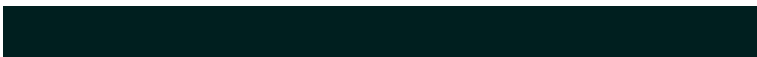
65, 17.576, 259.933



39, 3.863, 198.991



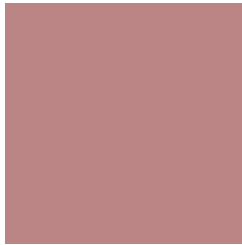
59, 35.055, 196.401



9, 11.662, 196.751

Previews

White Background



This preview shows how the CIELCh color 61, 22.760, 21.791 looks on a white background.

Color Contrast Check

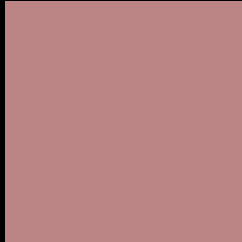
Large Text (above 18pt) WCAG AA ✓ Pass

Any Text WCAG AA ✗ Fail

Large Text (above 18pt) WCAG AAA ✗ Fail

Any Text WCAG AAA ✗ Fail

Black Background



This preview shows how the CIELCh color 61, 22.760, 21.791 looks on a black background.

Color Contrast Check

Large Text (above 18pt) WCAG AA ✓ Pass

Any Text WCAG AA ✓ Pass

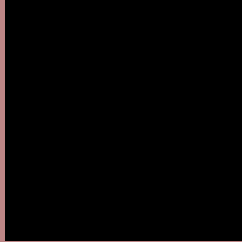
Large Text (above 18pt) WCAG AAA ✓ Pass

Any Text WCAG AAA × Fail

If you want to check with other color combinations, try the [Color Contrast Checker](#).

CIELCh 61, 22.760, 21.791

Background



This preview shows how black text looks on a background with the CIELCh color 61, 22.760, 21.791.



This preview shows how white text looks on a background with the CIELCh color 61, 22.760, 21.791.

Color Blindness Simulation

Color vision deficiency is a very complex topic, and I could not describe the different causes any better than Wikipedia does, so if you want to learn more, you should check out their [article about color blindness](#).

Dichromacy



Original Color

61, 22.760, 21.791

Protanopia

61, 3.886, 79.225

Deuteranopia

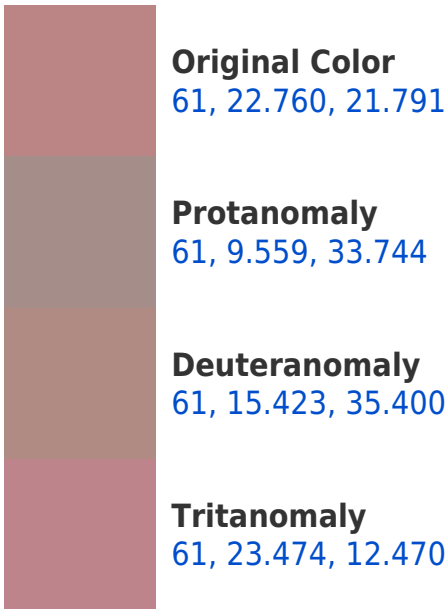
61, 12.106, 47.691



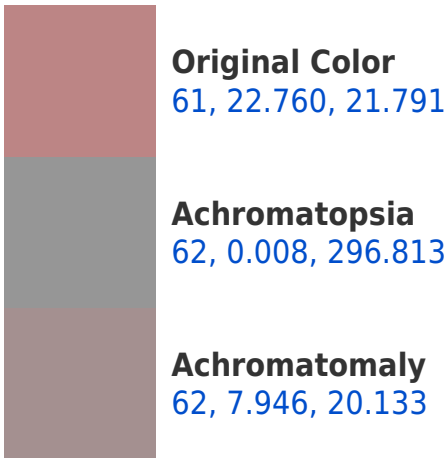
Tritanopia

61, 23.613, 8.441

Trichromacy



Monochromacy



CSS Examples

Text

The CSS property to change the color of the text to CIElCh 61, 22.760, 21.791 is called "color". The color property can be set on classes, ids or directly on the HTML element.

This example shows how text in the color `rgb(188, 133, 133)` looks like.

```
.text, #text, p{  
    color:rgb(188, 133, 133)  
}
```

If you want to add a text shadow in that color use the text-shadow property, you can generate a text shadow directly with our [CSS Text Shadow Generator](#).

Here you see how black text with a 4 pixel rgb(188, 133, 133) colored shadow looks like.

```
.shadow{ text-shadow: 4px 4px 2px rgb(188, 133, 133) }
```

Border

The CSS property to change the border of an element to CIELCh 61, 22.760, 21.791 is called "border". The border property can be set on classes, ids or directly on the HTML element.

This example shows the color as border, it can be applied via the CSS property "border" or "border-color".

```
.border, #border, table{ border:4px solid rgb(188, 133, 133) }
```

If only the border color should be changed use the property border-color.

```
.border{ border-color:rgb(188, 133, 133) }
```

If you want to add a box shadow in that color use:

Here you see how a box with a 4 pixel rgb(188, 133, 133) colored shadow looks like.

```
.boxshadow{ -moz-box-shadow:4px 4px 4px  
4px rgb(188, 133, 133); -webkit-box-  
shadow:4px 4px 4px 4px rgb(188, 133, 133);  
box-shadow:4px 4px 4px 4px rgb(188, 133,  
133) }
```

Background

The CSS property to change the background color of an element to CIELCh 61, 22.760, 21.791 is called "background". The background property can be set on classes, ids or directly on the HTML element.

```
.background, #background, body{  
background: rgb(188, 133, 133) }
```

If only the background color should be changed can be used:

```
.background{ background-color: rgb(188,  
133, 133) }
```

This example shows the color as background, it is applied via the CSS property "background".

To optimize and compress your CSS code, you can use our [online CSS compressor and optimizer](#) based on csstidy. If you want to create a linear or radial gradient as background or border, check our [CSS Gradient Generator](#).

Hey! You found this booklet
interesting? Support Converting
Colors with the new Membership
Option!

The pro membership hides all ads, plus gives you
double the colors in the color bucket, and more
awesome pro features!

[Learn more, Memberships starting at \\$2.50/m!](#)

**Follow me
on Twitter!**

@ConvertingColor