

Converting Colors

CIELCh(61, 23.487, 35.449)

Have a look what the booklet for
CIELCh(61, 23.487, 35.449) contains.

CIELCh(61, 23.681, 35.113)	3
<i>Conversions</i>	4
<i>Details</i>	6
<i>Harmonies</i>	11
<i>Previews</i>	20
<i>Color Blindness Simulation</i>	23
<i>CSS Examples</i>	26

Color

CIELCh(61, 23.681, 35.113)

Conversions

Conversions Part 1

Format	Color
Hex	BC867C
RGB	188, 134, 124
RGB Percent	74%, 53%, 49%
CMY	0.2623, 0.4740, 0.5133
CMYK	0.00, 0.29, 0.34, 0.26
HSL	9°, 32%, 61%
HSV	9°, 34%, 74%
XYZ	32.9568, 29.2481, 23.0153
YIQ	149.0060, 35.3940, 8.3380

Conversions

Conversions Part 2

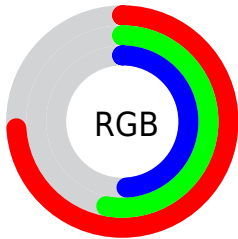
Format	Color
R_{YB}	188, 136, 124
Decimal	12355196
CIE Lab	61.00, 19.37, 13.62
CIE LCh	61, 23.681, 35.113
Yxy	29.2481, 0.3867, 0.3432
Android (android.graphics.Color)	4290545276 (0xFFBC867C)
YUV	149.0060, -12.3280, 34.1977
Hunter-Lab	54.0815, 14.1334, 12.6253

Details

The CIELCh color **61, 23.681, 35.113** is a dark color, and the websafe version is hex **CC9999**. A complement of this color would be **69, 18.569, 215.398**, and the grayscale version is **62, 0.008, 296.813**.

A 20% lighter version of the original color is **81, 23.524, 34.001**, and **41, 23.679, 35.484** is the 20% darker color. If you saturate the color by 10%, you get **57, 31.910, 35.695**, and if you desaturate by 10%, it is **65, 16.040, 34.752**.

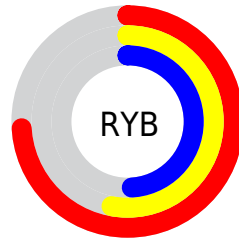
Distribution



Red (74%)

Green (53%)

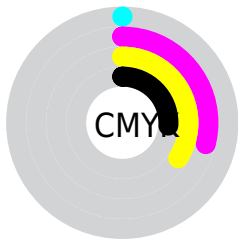
Blue (49%)



Red (74%)

Yellow (53%)

Blue (49%)

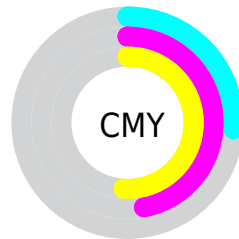


Cyan (0%)

Magenta (29%)

Yellow (34%)

Black (26%)



Cyan (26%)

Magenta (47%)

Yellow (51%)

Brightness & Saturation Gradients

These gradients show how the CIELCh color 61, 23.681, 35.113 changes by changing the brightness by 10 percent. The first figure shows a shift by +10% for each color and the second figure -10%.

Similar to the brightness gradients but the following saturation gradients show a change of the CIELCh color 61, 23.681, 35.113 by changing the saturation by 10% instead.

61, 23.681, 35.113

61, 23.681, 35.113

100, 23.681,
35.113

51, 23.681, 35.113

81, 23.681, 35.113

41, 23.681, 35.113

91, 23.681, 35.113

31, 23.681, 35.113

21, 23.681, 35.113

11, 23.681, 35.113

1, 23.681, 35.113

0, 23.681, 35.113

61, 23.681, 35.113

61, 23.681, 35.113

57, 31.910, 35.695

65, 16.040, 34.752

53, 40.695, 36.530

70, 8.983, 34.538

49, 49.930, 37.658

74, 2.474, 34.326

46, 59.385, 39.058

79, 3.532, 214.727

44, 68.568, 40.560

84, 9.087, 214.748

41, 76.402, 41.655

88, 14.242,
214.891

41, 80.322, 42.281

93, 18.974,
213.829

96, 21.650,
198.084

Harmonies

Complementary

The Complementary color scheme is a pair of colors which are on the opposite of each other on the color wheel.



61, 23.681, 35.113



69, 18.569, 215.398

Rectangle

The Rectangle color scheme consists of four colors that form a rectangle on the color wheel.



61, 23.681, 35.113



61, 23.681, 85.113



61, 23.681, 215.113



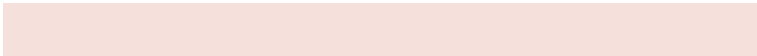
61, 23.681, 265.113

Sweetspot

The Sweet Spot groups the original color and five complimentary colors.



61, 23.680, 35.119



91, 7.807, 34.479



60, 38.253, 330.908



47, 5.355, 34.500



98, 0.011, 296.813



51, 0.007, 296.813

Same Dimension

The Same Dimension uses a secret algorithm to generate beautiful new colors.



61, 23.680, 35.119



74, 36.459, 35.538



69, 24.652, 85.370



37, 3.569, 34.466



34, 70.216, 42.432



4, 11.068, 29.439

Inverse Universe

The Inverse Universe completely reimagines the original color for something new.



69, 18.569, 215.398



86, 26.793, 215.858



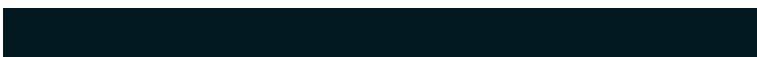
60, 24.299, 275.200



39, 3.364, 214.706



51, 30.474, 225.631



7, 9.698, 220.842

Previews

White Background



This preview shows how the CIELCh color 61, 23.681, 35.113 looks on a white background.

Color Contrast Check

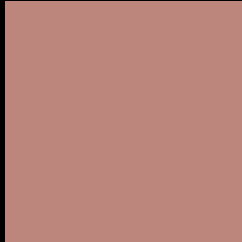
Large Text (above 18pt) WCAG AA ✓ Pass

Any Text WCAG AA ✗ Fail

Large Text (above 18pt) WCAG AAA ✗ Fail

Any Text WCAG AAA ✗ Fail

Black Background



This preview shows how the CIELCh color 61, 23.681, 35.113 looks on a black background.

Color Contrast Check

Large Text (above 18pt) WCAG AA ✓ Pass

Any Text WCAG AA ✓ Pass

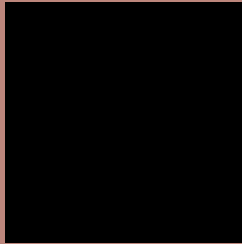
Large Text (above 18pt) WCAG AAA ✓ Pass

Any Text WCAG AAA × Fail

If you want to check with other color combinations, try the [Color Contrast Checker](#).

CIELCh 61, 23.681, 35.113

Background



This preview shows how black text looks on a background with the CIELCh color 61, 23.681, 35.113.



This preview shows how white text looks on a background with the CIELCh color 61, 23.681, 35.113.

Color Blindness Simulation

Color vision deficiency is a very complex topic, and I could not describe the different causes any better than Wikipedia does, so if you want to learn more, you should check out their [article about color blindness](#).

Dichromacy



Original Color

61, 23.681, 35.113

Protanopia

61, 9.395, 91.557

Deuteranopia

61, 15.980, 61.619



Tritanopia
61, 24.013, 8.726

Trichromacy



Original Color
61, 23.681, 35.113

Protanomaly
61, 12.725, 57.986

Deuteranomaly
61, 18.538, 49.361

Tritanomaly
61, 23.069, 19.109

Monochromacy



Original Color
61, 23.681, 35.113

Achromatopsia
62, 0.008, 296.813

Achromatomaly
61, 7.943, 36.378

CSS Examples

Text

The CSS property to change the color of the text to CIELCh 61, 23.681, 35.113 is called "color". The color property can be set on classes, ids or directly on the HTML element.

This example shows how text in the color `rgb(188, 134, 124)` looks like.

```
.text, #text, p{  
    color:rgb(188, 134, 124)  
}
```

If you want to add a text shadow in that color use the text-shadow property, you can generate a text shadow directly with our [CSS Text Shadow Generator](#).

Here you see how black text with a 4 pixel rgb(188, 134, 124) colored shadow looks like.

```
.shadow{ text-shadow: 4px 4px 2px rgb(188, 134, 124) }
```

Border

The CSS property to change the border of an element to CIELCh 61, 23.681, 35.113 is called "border". The border property can be set on classes, ids or directly on the HTML element.

This example shows the color as border, it can be applied via the CSS property "border" or "border-color".

```
.border, #border, table{ border:4px solid rgb(188, 134, 124) }
```

If only the border color should be changed use the property `border-color`.

```
.border{ border-color:rgb(188, 134, 124) }
```

If you want to add a box shadow in that color use:

Here you see how a box with a 4 pixel `rgb(188, 134, 124)` colored shadow looks like.

```
.boxshadow{ -moz-box-shadow:4px 4px 4px  
4px rgb(188, 134, 124); -webkit-box-  
shadow:4px 4px 4px 4px rgb(188, 134, 124);  
box-shadow:4px 4px 4px 4px rgb(188, 134,  
124) }
```

Background

The CSS property to change the background color of an element to CIELCh 61, 23.681, 35.113 is called "background". The background property can be set on classes, ids or directly on the HTML element.

```
.background, #background, body{  
background: rgb(188, 134, 124) }
```

If only the background color should be changed can be used:

```
.background{ background-color: rgb(188,  
134, 124) }
```

This example shows the color as background, it is applied via the CSS property "background".

To optimize and compress your CSS code, you can use our [online CSS compressor and optimizer](#) based on csstidy. If you want to create a linear or radial gradient as background or border, check our [CSS Gradient Generator](#).

Hey! You found this booklet interesting? Support Converting Colors with the new Membership Option!

The pro membership hides all ads, plus gives you double the colors in the color bucket, and more awesome pro features!

[Learn more, Memberships starting at \\$2.50/m!](#)

**Follow me
on Twitter!**

@ConvertingColor