

Converting Colors

CIELCh(61, 23.705, 17.749)

Have a look what the booklet for
CIELCh(61, 23.705, 17.749) contains.

CIELCh(61, 23.906, 17.998)	3
<i>Conversions</i>	4
<i>Details</i>	6
<i>Harmonies</i>	11
<i>Previews</i>	20
<i>Color Blindness Simulation</i>	23
<i>CSS Examples</i>	26

Color

CIELCh(61, 23.906, 17.998)

Conversions

Conversions Part 1

Format	Color
Hex	BE8487
RGB	190, 132, 135
RGB Percent	75%, 52%, 53%
CMY	0.2544, 0.4819, 0.4701
CMYK	0.00, 0.31, 0.29, 0.25
HSL	357°, 31%, 63%
HSV	357°, 31%, 75%
XYZ	33.9129, 29.2481, 26.8208
YIQ	149.6840, 33.6050, 13.2290

Conversions

Conversions Part 2

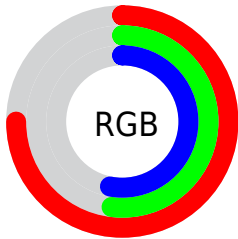
Format	Color
RYB	190, 132, 135
Decimal	12485767
CIELab	61.00, 22.74, 7.39
CIELCh	61, 23.906, 17.998
Yxy	29.2481, 0.3769, 0.3250
Android (android.graphics.Color)	4290675847 (0xFFBE8487)
YUV	149.6840, -7.2392, 35.3571
Hunter-Lab	54.0815, 17.2893, 8.4532

Details

The CIELCh color **61, 23.906, 17.998** is a light color, and the websafe version is hex **CC9999**. A complement of this color would be **73, 19.830, 193.142**, and the grayscale version is **62, 0.008, 296.813**.

A 20% lighter version of the original color is **81, 23.926, 17.626**, and **41, 23.809, 18.750** is the 20% darker color. If you saturate the color by 10%, you get **56, 32.730, 19.508**, and if you desaturate by 10%, it is **66, 15.533, 16.813**.

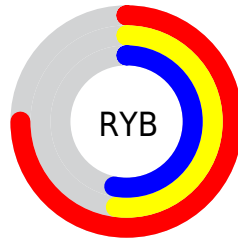
Distribution



Red (75%)

Green (52%)

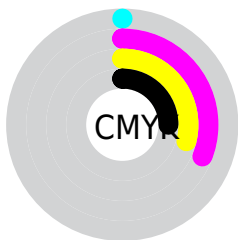
Blue (53%)



Red (75%)

Yellow (52%)

Blue (53%)

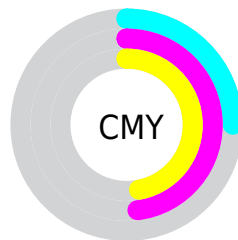


Cyan (0%)

Magenta (31%)

Yellow (29%)

Black (25%)



Cyan (25%)

Magenta (48%)

Yellow (47%)

Brightness & Saturation Gradients

These gradients show how the CIELCh color 61, 23.906, 17.998 changes by changing the brightness by 10 percent. The first figure shows a shift by +10% for each color and the second figure -10%.

Similar to the brightness gradients but the following saturation gradients show a change of the CIELCh color 61, 23.906, 17.998 by changing the saturation by 10% instead.

61, 23.906, 17.998

61, 23.906, 17.998

100, 23.906,
17.998

51, 23.906, 17.998

81, 23.906, 17.998

41, 23.906, 17.998

91, 23.906, 17.998

31, 23.906, 17.998

21, 23.906, 17.998

11, 23.906, 17.998

1, 23.906, 17.998

0, 23.906, 17.998

61, 23.906, 17.998

61, 23.906, 17.998

56, 32.730, 19.508

66, 15.533, 16.813

■ 52, 41.874, 21.437

■ 71, 7.681, 15.842

■ 48, 51.112, 23.908

■ 77, 0.361, 13.701

■ 44, 60.153, 27.022

■ 82, 6.451, 194.619

■ 42, 68.660, 30.769

■ 88, 12.792,
194.066

■ 40, 76.173, 34.836

■ 93, 18.709,
193.622

■ 40, 81.683, 38.032

■ 96, 21.065,
198.121

Harmonies

Complementary

The Complementary color scheme is a pair of colors which are on the opposite of each other on the color wheel.



61, 23.906, 17.998



73, 19.830, 193.142

Rectangle

The Rectangle color scheme consists of four colors that form a rectangle on the color wheel.



61, 23.906, 17.998



61, 23.906, 67.998



61, 23.906, 197.998



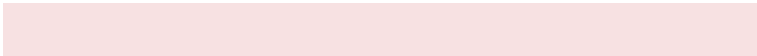
61, 23.906, 247.998

Sweetspot

The Sweet Spot groups the original color and five complimentary colors.



61, 23.904, 18.003



91, 8.106, 15.719



62, 37.714, 324.153



48, 5.709, 15.852



99, 0.012, 296.813



52, 0.007, 296.813

Same Dimension

The Same Dimension uses a secret algorithm to generate beautiful new colors.



61, 23.904, 18.003



74, 36.704, 19.032



67, 19.615, 64.523



37, 4.100, 15.737



32, 70.828, 37.553



3, 12.277, 16.430

Inverse Universe

The Inverse Universe completely reimagines the original color for something new.



61, 23.904, 18.003



74, 36.704, 19.032



66, 17.403, 252.337



37, 4.100, 15.737



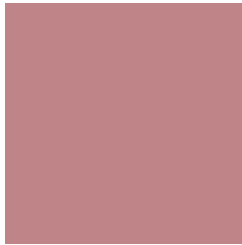
32, 70.828, 37.553



3, 12.277, 16.430

Previews

White Background



This preview shows how the CIELCh color 61, 23.906, 17.998 looks on a white background.

Color Contrast Check

Large Text (above 18pt) WCAG AA ✓ Pass

Any Text WCAG AA ✗ Fail

Large Text (above 18pt) WCAG AAA ✗ Fail

Any Text WCAG AAA ✗ Fail

Black Background



This preview shows how the CIE LCh color 61, 23.906, 17.998 looks on a black background.

Color Contrast Check

Large Text (above 18pt) WCAG AA ✓ Pass

Any Text WCAG AA ✓ Pass

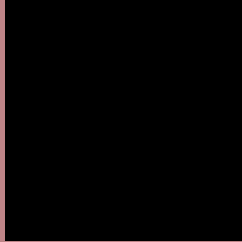
Large Text (above 18pt) WCAG AAA ✓ Pass

Any Text WCAG AAA × Fail

If you want to check with other color combinations, try the [Color Contrast Checker](#).

CIELCh 61, 23.906, 17.998

Background



This preview shows how black text looks on a background with the CIELCh color 61, 23.906, 17.998.

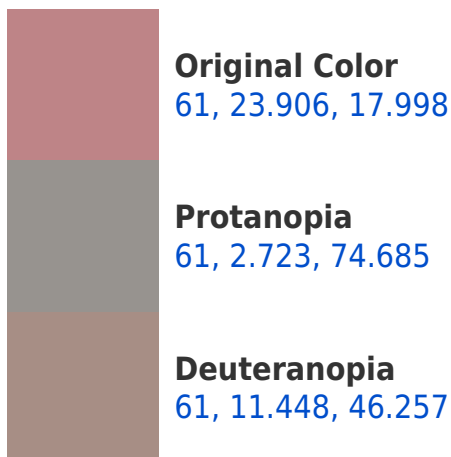


This preview shows how white text looks on a background with the CIELCh color 61, 23.906, 17.998.

Color Blindness Simulation

Color vision deficiency is a very complex topic, and I could not describe the different causes any better than Wikipedia does, so if you want to learn more, you should check out their [article about color blindness](#).

Dichromacy





Tritanopia
61, 24.847, 9.295

Trichromacy



Original Color
61, 23.906, 17.998

Protanomaly
61, 9.308, 27.145

Deuteranomaly
61, 15.388, 29.189

Tritanomaly
61, 24.762, 11.845

Monochromacy



Original Color
61, 23.906, 17.998

Achromatopsia
62, 0.008, 296.813

Achromatomaly
61, 8.797, 12.953

CSS Examples

Text

The CSS property to change the color of the text to CIELCh 61, 23.906, 17.998 is called "color". The color property can be set on classes, ids or directly on the HTML element.

This example shows how text in the color `rgb(190, 132, 135)` looks like.

```
.text, #text, p{  
    color:rgb(190, 132, 135)  
}
```

If you want to add a text shadow in that color use the text-shadow property, you can generate a text shadow directly with our [CSS Text Shadow Generator](#).

Here you see how black text with a 4 pixel rgb(190, 132, 135) colored shadow looks like.

```
.shadow{ text-shadow: 4px 4px 2px rgb(190, 132, 135) }
```

Border

The CSS property to change the border of an element to CIELCh 61, 23.906, 17.998 is called "border". The border property can be set on classes, ids or directly on the HTML element.

This example shows the color as border, it can be applied via the CSS property "border" or "border-color".

```
.border, #border, table{ border:4px solid rgb(190, 132, 135) }
```

If only the border color should be changed use the property `border-color`.

```
.border{ border-color:rgb(190, 132, 135) }
```

If you want to add a box shadow in that color use:

Here you see how a box with a 4 pixel `rgb(190, 132, 135)` colored shadow looks like.

```
.boxshadow{ -moz-box-shadow:4px 4px 4px  
4px rgb(190, 132, 135); -webkit-box-  
shadow:4px 4px 4px 4px rgb(190, 132, 135);  
box-shadow:4px 4px 4px 4px rgb(190, 132,  
135) }
```

Background

The CSS property to change the background color of an element to CIELCh 61, 23.906, 17.998 is called "background". The background property can be set on classes, ids or directly on the HTML element.

```
.background, #background, body{  
background: rgb(190, 132, 135) }
```

If only the background color should be changed can be used:

```
.background{ background-color: rgb(190,  
132, 135) }
```

This example shows the color as background, it is applied via the CSS property "background".

To optimize and compress your CSS code, you can use our [online CSS compressor and optimizer](#) based on csstidy. If you want to create a linear or radial gradient as background or border, check our [CSS Gradient Generator](#).

Hey! You found this booklet interesting? Support Converting Colors with the new Membership Option!

The pro membership hides all ads, plus gives you double the colors in the color bucket, and more awesome pro features!

[Learn more, Memberships starting at \\$2.50/m!](#)

**Follow me
on Twitter!**

@ConvertingColor