

Converting Colors

CIELCh(61, 26.056, 34.745)

Have a look what the booklet for
CIELCh(61, 26.056, 34.745) contains.

CIELCh(61, 26.047, 35.315)	3
<i>Conversions</i>	4
<i>Details</i>	6
<i>Harmonies</i>	11
<i>Previews</i>	20
<i>Color Blindness Simulation</i>	23
<i>CSS Examples</i>	26

Color

CIELCh(61, 26.047, 35.315)

Conversions

Conversions Part 1

Format	Color
Hex	C0857A
RGB	192, 133, 122
RGB Percent	75%, 52%, 48%
CMY	0.2484, 0.4796, 0.5228
CMYK	0.00, 0.31, 0.37, 0.25
HSL	9°, 36%, 61%
HSV	9°, 37%, 75%
XYZ	33.4895, 29.2481, 22.1931
YIQ	149.3870, 38.6950, 9.0870

Conversions

Conversions Part 2

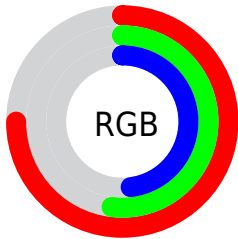
Format	Color
RYB	192, 135, 122
Decimal	12617082
CIELab	61.00, 21.25, 15.06
CIELCh	61, 26.047, 35.315
Yxy	29.2481, 0.3943, 0.3444
Android (android.graphics.Color)	4290807162 (0xFFC0857A)
YUV	149.3870, -13.5018, 37.3716
Hunter-Lab	54.0815, 15.8916, 13.5267

Details

The CIELCh color **61, 26.047, 35.315** is a light color, and the websafe version is hex **CC9999**. A complement of this color would be **70, 20.001, 215.647**, and the grayscale version is **62, 0.008, 296.813**.

A 20% lighter version of the original color is **81, 26.285, 35.133**, and **41, 26.297, 35.797** is the 20% darker color. If you saturate the color by 10%, you get **57, 34.545, 35.953**, and if you desaturate by 10%, it is **65, 18.142, 34.910**.

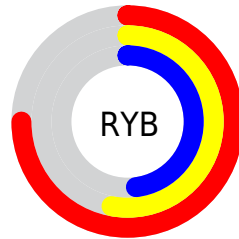
Distribution



Red (75%)

Green (52%)

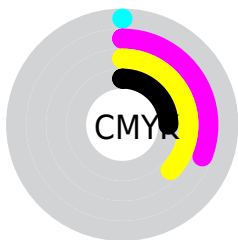
Blue (48%)



Red (75%)

Yellow (53%)

Blue (48%)

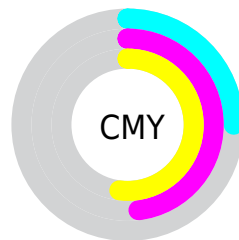


Cyan (0%)

Magenta (31%)

Yellow (37%)

Black (25%)



Cyan (25%)

Magenta (48%)

Yellow (52%)

Brightness & Saturation Gradients

These gradients show how the CIELCh color 61, 26.047, 35.315 changes by changing the brightness by 10 percent. The first figure shows a shift by +10% for each color and the second figure -10%.

Similar to the brightness gradients but the following saturation gradients show a change of the CIELCh color 61, 26.047, 35.315 by changing the saturation by 10% instead.

61, 26.047, 35.315

61, 26.047, 35.315

100, 26.047,
35.315

51, 26.047, 35.315

81, 26.047, 35.315

41, 26.047, 35.315

91, 26.047, 35.315

31, 26.047, 35.315

21, 26.047, 35.315

11, 26.047, 35.315

1, 26.047, 35.315

0, 26.047, 35.315

61, 26.047, 35.315

61, 26.047, 35.315

57, 34.545, 35.953

65, 18.142, 34.910

53, 43.590, 36.855

70, 10.836, 34.669

49, 53.049, 38.051

75, 4.098, 34.504

46, 62.639, 39.495

79, 2.118, 214.908

44, 71.748, 40.950

84, 7.863, 214.823

42, 79.122, 41.842

89, 13.188,
214.953

41, 81.448, 42.275

94, 18.068,
213.745

96, 20.611,
198.149

Harmonies

Complementary

The Complementary color scheme is a pair of colors which are on the opposite of each other on the color wheel.



61, 26.047, 35.315



70, 20.001, 215.647

Rectangle

The Rectangle color scheme consists of four colors that form a rectangle on the color wheel.



61, 26.047, 35.315



61, 26.047, 85.315



61, 26.047, 215.315



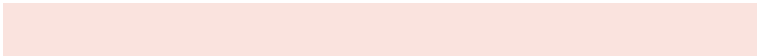
61, 26.047, 265.315

Sweetspot

The Sweet Spot groups the original color and five complimentary colors.



61, 26.045, 35.320



92, 8.764, 34.584



60, 41.585, 331.067



48, 5.921, 34.604



99, 0.012, 296.813



52, 0.007, 296.813

Same Dimension

The Same Dimension uses a secret algorithm to generate beautiful new colors.



61, 26.045, 35.320



74, 40.258, 35.821



70, 26.919, 85.027



38, 3.647, 34.557



34, 71.093, 42.461



4, 12.701, 28.925

Inverse Universe

The Inverse Universe completely reimagines the original color for something new.



70, 20.001, 215.647



87, 28.789, 216.203



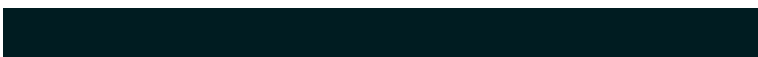
60, 26.512, 275.728



40, 3.436, 214.805



52, 30.831, 225.858



8, 10.628, 219.421

Previews

White Background



This preview shows how the CIELCh color 61, 26.047, 35.315 looks on a white background.

Color Contrast Check

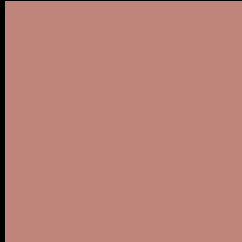
Large Text (above 18pt) WCAG AA ✓ Pass

Any Text WCAG AA ✗ Fail

Large Text (above 18pt) WCAG AAA ✗ Fail

Any Text WCAG AAA ✗ Fail

Black Background



This preview shows how the CIE LCh color 61, 26.047, 35.315 looks on a black background.

Color Contrast Check

Large Text (above 18pt) WCAG AA ✓ Pass

Any Text WCAG AA ✓ Pass

Large Text (above 18pt) WCAG AAA ✓ Pass

Any Text WCAG AAA × Fail

If you want to check with other color combinations, try the [Color Contrast Checker](#).

CIELCh 61, 26.047, 35.315

Background



This preview shows how black text looks on a background with the CIELCh color 61, 26.047, 35.315.



This preview shows how white text looks on a background with the CIELCh color 61, 26.047, 35.315.

Color Blindness Simulation

Color vision deficiency is a very complex topic, and I could not describe the different causes any better than Wikipedia does, so if you want to learn more, you should check out their [article about color blindness](#).

Dichromacy



Original Color

61, 26.047, 35.315

Protanopia

61, 10.592, 91.073

Deuteranopia

61, 17.534, 64.406



Tritanopia
61, 26.088, 10.088

Trichromacy



Original Color
61, 26.047, 35.315

Protanomaly
61, 14.147, 59.235

Deuteranomaly
61, 19.945, 50.805

Tritanomaly
61, 25.672, 19.706

Monochromacy



Original Color
61, 26.047, 35.315

Achromatopsia
62, 0.008, 296.813

Achromatomaly
61, 9.145, 34.311

CSS Examples

Text

The CSS property to change the color of the text to CIELCh 61, 26.047, 35.315 is called "color". The color property can be set on classes, ids or directly on the HTML element.

This example shows how text in the color `rgb(192, 133, 122)` looks like.

```
.text, #text, p{  
    color:rgb(192, 133, 122)  
}
```

If you want to add a text shadow in that color use the text-shadow property, you can generate a text shadow directly with our [CSS Text Shadow Generator](#).

Here you see how black text with a 4 pixel rgb(192, 133, 122) colored shadow looks like.

```
.shadow{ text-shadow: 4px 4px 2px rgb(192, 133, 122) }
```

Border

The CSS property to change the border of an element to CIELCh 61, 26.047, 35.315 is called "border". The border property can be set on classes, ids or directly on the HTML element.

This example shows the color as border, it can be applied via the CSS property "border" or "border-color".

```
.border, #border, table{ border:4px solid rgb(192, 133, 122) }
```

If only the border color should be changed use the property `border-color`.

```
.border{ border-color:rgb(192, 133, 122) }
```

If you want to add a box shadow in that color use:

Here you see how a box with a 4 pixel `rgb(192, 133, 122)` colored shadow looks like.

```
.boxshadow{ -moz-box-shadow:4px 4px 4px  
4px rgb(192, 133, 122); -webkit-box-  
shadow:4px 4px 4px 4px rgb(192, 133, 122);  
box-shadow:4px 4px 4px 4px rgb(192, 133,  
122) }
```

Background

The CSS property to change the background color of an element to CIELCh 61, 26.047, 35.315 is called "background". The background property can be set on classes, ids or directly on the HTML element.

```
.background, #background, body{  
background: rgb(192, 133, 122) }
```

If only the background color should be changed can be used:

```
.background{ background-color: rgb(192,  
133, 122) }
```

This example shows the color as background, it is applied via the CSS property "background".

To optimize and compress your CSS code, you can use our [online CSS compressor and optimizer](#) based on csstidy. If you want to create a linear or radial gradient as background or border, check our [CSS Gradient Generator](#).

Hey! You found this booklet interesting? Support Converting Colors with the new Membership Option!

The pro membership hides all ads, plus gives you double the colors in the color bucket, and more awesome pro features!

[Learn more, Memberships starting at \\$2.50/m!](#)

**Follow me
on Twitter!**

@ConvertingColor