

# Converting Colors

CIELCh(61, 26.287, 51.314)

Have a look what the booklet for  
CIELCh(61, 26.287, 51.314) contains.

<b>CIELCh(61, 26.294, 51.456)</b> .....	3
<i><b>Conversions</b></i> .....	4
<i><b>Details</b></i> .....	6
<i><b>Harmonies</b></i> .....	11
<i><b>Previews</b></i> .....	20
<i><b>Color Blindness Simulation</b></i> .....	23
<i><b>CSS Examples</b></i> .....	26

**Color**

**CIELCh(61, 26.294, 51.456)**

# Conversions

## Conversions Part 1

<b>Format</b>	<b>Color</b>
Hex	BB8870
RGB	187, 136, 112
RGB Percent	73%, 53%, 44%
CMY	0.2676, 0.4675, 0.5616
CMYK	0.00, 0.27, 0.40, 0.27
HSL	19°, 35%, 59%
HSV	19°, 40%, 73%
XYZ	32.1231, 29.2481, 19.2208
YIQ	148.5130, 38.1000, 3.3480

# Conversions

## Conversions Part 2

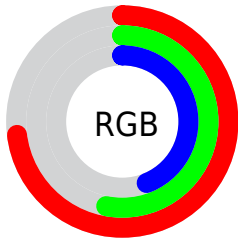
<b>Format</b>	<b>Color</b>
<b>RYB</b>	187, 147, 112
Decimal	12290160
CIELab	61.00, 16.38, 20.57
CIElCh	61, 26.294, 51.456
Yxy	29.2481, 0.3986, 0.3629
Android (android.graphics.Color)	4290480240 (0xFFBB8870)
YUV	148.5130, -18.0009, 33.7531
Hunter-Lab	54.0815, 11.3817, 16.7852

# Details

The CIELCh color  $61, 26.294, 51.456$  is a dark color, and the websafe version is hex `CC9999`. A complement of this color would be  $64, 20.683, 238.939$ , and the grayscale version is  $61, 0.008, 296.813$ .

A 20% lighter version of the original color is  $81, 26.407, 50.556$ , and  $41, 26.349, 51.374$  is the 20% darker color. If you saturate the color by 10%, you get  $58, 34.092, 51.030$ , and if you desaturate by 10%, it is  $65, 19.011, 51.990$ .

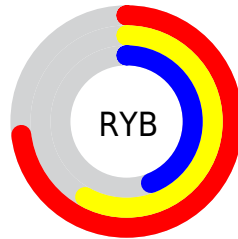
# Distribution



Red (73%)

Green (53%)

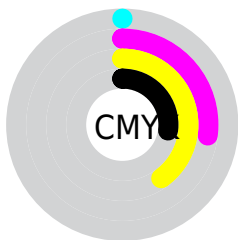
Blue (44%)



Red (73%)

Yellow (58%)

Blue (44%)

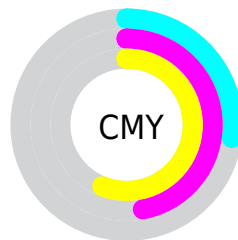


Cyan (0%)

Magenta (27%)

Yellow (40%)

Black (27%)



Cyan (27%)

Magenta (47%)

Yellow (56%)

# Brightness & Saturation Gradients

These gradients show how the CIELCh color 61, 26.294, 51.456 changes by changing the brightness by 10 percent. The first figure shows a shift by +10% for each color and the second figure -10%.

Similar to the brightness gradients but the following saturation gradients show a change of the CIELCh color 61, 26.294, 51.456 by changing the saturation by 10% instead.



61, 26.294, 51.456

61, 26.294, 51.456

100, 26.294,  
51.456

51, 26.294, 51.456

81, 26.294, 51.456

41, 26.294, 51.456

91, 26.294, 51.456

31, 26.294, 51.456

21, 26.294, 51.456

11, 26.294, 51.456

1, 26.294, 51.456

0, 26.294, 51.456

61, 26.294, 51.456

61, 26.294, 51.456

58, 34.092, 51.030

65, 19.011, 51.990

54, 42.371, 50.699

68, 12.238, 52.594

51, 50.997, 50.434

72, 5.940, 53.235

48, 59.637, 50.122

76, 0.077, 47.928

46, 67.563, 49.468

80, 5.399, 234.885

44, 74.033, 48.401

83, 10.530,  
235.614

87, 15.358,  
236.375

91, 18.409,  
228.443

94, 20.518,  
205.309

# Harmonies

# Complementary

The Complementary color scheme is a pair of colors which are on the opposite of each other on the color wheel.



61, 26.294, 51.456



64, 20.683, 238.939

# Rectangle

The Rectangle color scheme consists of four colors that form a rectangle on the color wheel.



61, 26.294, 51.456



61, 26.294, 101.456



61, 26.294, 231.456



61, 26.294, 281.456

# Sweetspot

The Sweet Spot groups the original color and five complimentary colors.



61, 26.293, 51.462



90, 8.747, 53.105



57, 39.867, 338.023



48, 5.877, 53.021



98, 0.011, 296.813



51, 0.007, 296.813



# Same Dimension

The Same Dimension uses a secret algorithm to generate beautiful new colors.



61, 26.293, 51.462



74, 40.113, 51.083



71, 33.465, 96.759



38, 3.337, 53.284



37, 65.145, 48.846



4, 10.272, 42.012





# Inverse Universe

The Inverse Universe completely reimagines the original color for something new.



64, 20.683, 238.939



79, 29.660, 240.693



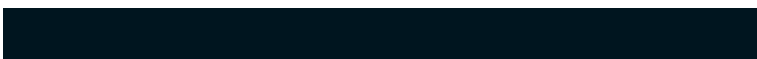
54, 35.410, 287.429



38, 3.183, 234.912



43, 35.186, 259.097



6, 9.795, 248.315



# Previews

## White Background



This preview shows how the CIELCh color 61, 26.294, 51.456 looks on a white background.

## Color Contrast Check

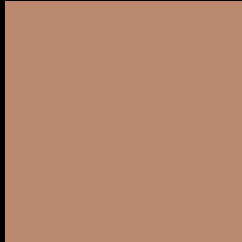
Large Text (above 18pt) WCAG AA ✓ Pass

Any Text WCAG AA × Fail

Large Text (above 18pt) WCAG AAA × Fail

Any Text WCAG AAA × Fail

# Black Background



This preview shows how the CIELCh color 61, 26.294, 51.456 looks on a black background.

## Color Contrast Check

Large Text (above 18pt) WCAG AA ✓ Pass

Any Text WCAG AA ✓ Pass

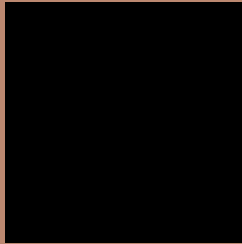
Large Text (above 18pt) WCAG AAA ✓ Pass

Any Text WCAG AAA × Fail

If you want to check with other color combinations, try the [Color Contrast Checker](#).

# CIELCh 61, 26.294, 51.456

## Background



This preview shows how black text looks on a background with the CIELCh color 61, 26.294, 51.456.



This preview shows how white text looks on a background with the CIELCh color 61, 26.294, 51.456.

# Color Blindness Simulation

Color vision deficiency is a very complex topic, and I could not describe the different causes any better than Wikipedia does, so if you want to learn more, you should check out their [article about color blindness](#).

## Dichromacy



### Original Color

61, 26.294, 51.456

### Protanopia

61, 17.293, 94.212

### Deuteranopia

61, 22.270, 68.497



**Tritanopia**  
61, 24.013, 8.726



# Trichromacy



**Original Color**  
61, 26.294, 51.456

**Protanomaly**  
61, 19.093, 74.455

**Deuteranomaly**  
61, 23.692, 61.432

**Tritanomaly**  
61, 23.354, 24.531

# Monochromacy



**Original Color**  
61, 26.294, 51.456

**Achromatopsia**  
61, 0.008, 296.813

**Achromatomaly**  
61, 8.887, 54.386

# CSS Examples

## Text

The CSS property to change the color of the text to CIELCh 61, 26.294, 51.456 is called "color". The color property can be set on classes, ids or directly on the HTML element.

This example shows how text in the color `rgb(187, 136, 112)` looks like.

```
.text, #text, p{  
    color:rgb(187, 136, 112)  
}
```

If you want to add a text shadow in that color use the text-shadow property, you can generate a text shadow directly with our [CSS Text Shadow Generator](#).

Here you see how black text with a 4 pixel rgb(187, 136, 112) colored shadow looks like.

```
.shadow{ text-shadow: 4px 4px 2px rgb(187, 136, 112) }
```

## Border

The CSS property to change the border of an element to CIELCh 61, 26.294, 51.456 is called "border". The border property can be set on classes, ids or directly on the HTML element.

This example shows the color as border, it can be applied via the CSS property "border" or "border-color".

```
.border, #border, table{ border:4px solid rgb(187, 136, 112) }
```

If only the border color should be changed use the property `border-color`.

```
.border{ border-color:rgb(187, 136, 112) }
```

If you want to add a box shadow in that color use:

Here you see how a box with a 4 pixel `rgb(187, 136, 112)` colored shadow looks like.

```
.boxshadow{ -moz-box-shadow:4px 4px 4px  
4px rgb(187, 136, 112); -webkit-box-  
shadow:4px 4px 4px 4px rgb(187, 136, 112);  
box-shadow:4px 4px 4px 4px rgb(187, 136,  
112) }
```

# Background

The CSS property to change the background color of an element to CIELCh 61, 26.294, 51.456 is called "background". The background property can be set on classes, ids or directly on the HTML element.

```
.background, #background, body{  
background: rgb(187, 136, 112) }
```

If only the background color should be changed can be used:

```
.background{ background-color: rgb(187,  
136, 112) }
```

This example shows the color as background, it is applied via the CSS property "background".

To optimize and compress your CSS code, you can use our [online CSS compressor and optimizer](#) based on csstidy. If you want to create a linear or radial gradient as background or border, check our [CSS Gradient Generator](#).

Hey! You found this booklet interesting? Support Converting Colors with the new Membership Option!

The pro membership hides all ads, plus gives you double the colors in the color bucket, and more awesome pro features!

**[Learn more, Memberships starting at \\$2.50/m!](#)**

**Follow me  
on Twitter!**

@ConvertingColor