

Converting Colors

CIELCh(61, 26.567, 72.350)

Have a look what the booklet for
CIELCh(61, 26.567, 72.350) contains.

CIELCh(61, 26.527, 72.378)	3
<i>Conversions</i>	4
<i>Details</i>	6
<i>Harmonies</i>	11
<i>Previews</i>	20
<i>Color Blindness Simulation</i>	23
<i>CSS Examples</i>	26

Color

CIELCh(61, 26.527, 72.378)

Conversions

Conversions Part 1

Format	Color
Hex	B08D67
RGB	176, 141, 103
RGB Percent	69%, 55%, 40%
CMY	0.3099, 0.4471, 0.5962
CMYK	0.00, 0.20, 0.41, 0.31
HSL	31°, 32%, 55%
HSV	31°, 41%, 69%
XYZ	29.8666, 29.2481, 16.8970
YIQ	147.1330, 33.0580, -4.3980

Conversions

Conversions Part 2

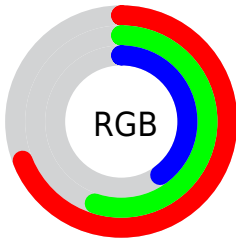
Format	Color
R_YB	170, 176, 103
Decimal	11570535
CIE _{Lab}	61.00, 8.03, 25.28
CIE _{LCh}	61, 26.527, 72.378
Yxy	29.2481, 0.3929, 0.3848
Android (android.graphics.Color)	4289760615 (0xFFB08D67)
YUV	147.1330, -21.7576, 25.3164
Hunter-Lab	54.0815, 3.9342, 19.3328

Details

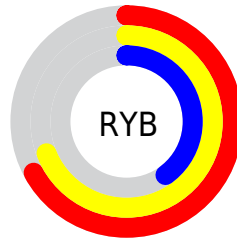
The CIELCh color $61, 26.527, 72.378$ is a dark color, and the websafe version is hex `CC9966`. A complement of this color would be $56, 23.960, 264.799$, and the grayscale version is $61, 0.008, 296.813$.

A 20% lighter version of the original color is $81, 26.819, 73.117$, and $41, 26.794, 72.467$ is the 20% darker color. If you saturate the color by 10%, you get $59, 33.590, 71.075$, and if you desaturate by 10%, it is $64, 19.707, 73.670$.

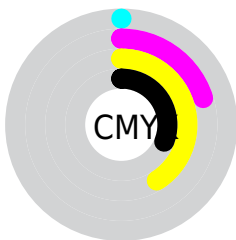
Distribution



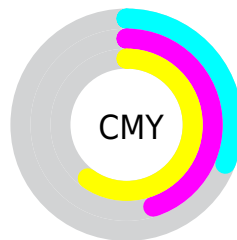
- Red (69%)
- Green (55%)
- Blue (40%)



- Red (67%)
- Yellow (69%)
- Blue (40%)



- Cyan (0%)
- Magenta (20%)
- Yellow (41%)
- Black (31%)



- Cyan (31%)
- Magenta (45%)
- Yellow (60%)

Brightness & Saturation Gradients

These gradients show how the CIELCh color 61, 26.527, 72.378 changes by changing the brightness by 10 percent. The first figure shows a shift by +10% for each color and the second figure -10%.

Similar to the brightness gradients but the following saturation gradients show a change of the CIELCh color 61, 26.527, 72.378 by changing the saturation by 10% instead.

■ 61, 26.527, 72.378

■ 61, 26.527, 72.378

■ 100, 26.527,
72.378

■ 51, 26.527, 72.378

■ 81, 26.527, 72.378

■ 41, 26.527, 72.378

■ 91, 26.527, 72.378

■ 31, 26.527, 72.378

■ 21, 26.527, 72.378

■ 11, 26.527, 72.378

■ 1, 26.527, 72.378

■ 0, 26.527, 72.378

■ 61, 26.527, 72.378

■ 61, 26.527, 72.378

■ 59, 33.590, 71.075

■ 64, 19.707, 73.670

■ 56, 40.806, 69.727

■ 66, 13.158, 74.936

■ 54, 47.973, 68.287

■ 69, 6.882, 76.167

■ 52, 54.685, 66.637

■ 71, 0.864, 77.070

■ 50, 60.242, 64.544

■ 74, 4.918, 258.699

■ 48, 63.985, 62.459

■ 77, 10.487,
259.819

■ 80, 15.865,
260.922

■ 82, 21.073,
261.986

■ 85, 23.387,
258.370

Harmonies

Complementary

The Complementary color scheme is a pair of colors which are on the opposite of each other on the color wheel.



61, 26.527, 72.378



56, 23.960, 264.799

Rectangle

The Rectangle color scheme consists of four colors that form a rectangle on the color wheel.



61, 26.527, 72.378



61, 26.527, 122.378



61, 26.527, 252.378



61, 26.527, 302.378

Sweetspot

The Sweet Spot groups the original color and five complimentary colors.



61, 26.527, 72.384



87, 8.941, 76.080



53, 34.689, 348.756



46, 5.941, 75.927



96, 0.011, 296.813



48, 0.006, 296.813

Same Dimension

The Same Dimension uses a secret algorithm to generate beautiful new colors.



61, 26.527, 72.384



75, 40.440, 71.155



70, 38.872, 107.013



36, 3.418, 76.423



42, 57.610, 62.907



5, 7.632, 65.268

Inverse Universe

The Inverse Universe completely reimagines the original color for something new.



56, 23.960, 264.799



68, 35.646, 267.234



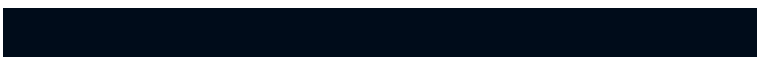
47, 43.248, 296.204



36, 3.356, 258.887



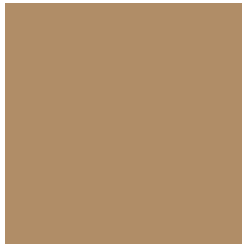
32, 50.628, 285.330



3, 8.961, 267.698

Previews

White Background



This preview shows how the CIELCh color 61, 26.527, 72.378 looks on a white background.

Color Contrast Check

Large Text (above 18pt) WCAG AA ✓ Pass

Any Text WCAG AA ✗ Fail

Large Text (above 18pt) WCAG AAA ✗ Fail

Any Text WCAG AAA ✗ Fail

Black Background



This preview shows how the CIE LCh color 61, 26.527, 72.378 looks on a black background.

Color Contrast Check

Large Text (above 18pt) WCAG AA ✓ Pass

Any Text WCAG AA ✓ Pass

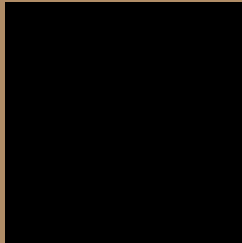
Large Text (above 18pt) WCAG AAA ✓ Pass

Any Text WCAG AAA × Fail

If you want to check with other color combinations, try the [Color Contrast Checker](#).

CIELCh 61, 26.527, 72.378

Background



This preview shows how black text looks on a background with the CIELCh color 61, 26.527, 72.378.



This preview shows how white text looks on a background with the CIELCh color 61, 26.527, 72.378.

Color Blindness Simulation

Color vision deficiency is a very complex topic, and I could not describe the different causes any better than Wikipedia does, so if you want to learn more, you should check out their [article about color blindness](#).

Dichromacy



Original Color

61, 26.527, 72.378

Protanopia

61, 23.436, 94.852

Deuteranopia

61, 26.527, 72.378



Tritanopia
61, 18.922, 2.558

Trichromacy



Original Color
61, 26.527, 72.378

Protanomaly
61, 24.038, 86.487

Deuteranomaly
61, 26.527, 72.378

Tritanomaly
61, 17.964, 33.566

Monochromacy



Original Color
61, 26.527, 72.378

Achromatopsia
61, 0.008, 296.813

Achromatomaly
61, 9.481, 75.284

CSS Examples

Text

The CSS property to change the color of the text to CIELCh 61, 26.527, 72.378 is called "color". The color property can be set on classes, ids or directly on the HTML element.

This example shows how text in the color `rgb(176, 141, 103)` looks like.

```
.text, #text, p{  
    color:rgb(176, 141, 103)  
}
```

If you want to add a text shadow in that color use the text-shadow property, you can generate a text shadow directly with our [CSS Text Shadow Generator](#).

Here you see how black text with a 4 pixel rgb(176, 141, 103) colored shadow looks like.

```
.shadow{ text-shadow: 4px 4px 2px rgb(176, 141, 103) }
```

Border

The CSS property to change the border of an element to CIELCh 61, 26.527, 72.378 is called "border". The border property can be set on classes, ids or directly on the HTML element.

This example shows the color as border, it can be applied via the CSS property "border" or "border-color".

```
.border, #border, table{ border:4px solid rgb(176, 141, 103) }
```

If only the border color should be changed use the property `border-color`.

```
.border{ border-color:rgb(176, 141, 103) }
```

If you want to add a box shadow in that color use:

Here you see how a box with a 4 pixel `rgb(176, 141, 103)` colored shadow looks like.

```
.boxshadow{ -moz-box-shadow:4px 4px 4px  
4px rgb(176, 141, 103); -webkit-box-  
shadow:4px 4px 4px 4px rgb(176, 141, 103);  
box-shadow:4px 4px 4px 4px rgb(176, 141,  
103) }
```

Background

The CSS property to change the background color of an element to CIELCh 61, 26.527, 72.378 is called "background". The background property can be set on classes, ids or directly on the HTML element.

```
.background, #background, body{  
background: rgb(176, 141, 103) }
```

If only the background color should be changed can be used:

```
.background{ background-color: rgb(176,  
141, 103) }
```

This example shows the color as background, it is applied via the CSS property "background".

To optimize and compress your CSS code, you can use our [online CSS compressor and optimizer](#) based on csstidy. If you want to create a linear or radial gradient as background or border, check our [CSS Gradient Generator](#).

Hey! You found this booklet interesting? Support Converting Colors with the new Membership Option!

The pro membership hides all ads, plus gives you double the colors in the color bucket, and more awesome pro features!

[Learn more, Memberships starting at \\$2.50/m!](#)

**Follow me
on Twitter!**

@ConvertingColor