

Converting Colors

CIELCh(61, 26.947, 29.171)

Have a look what the booklet for
CIELCh(61, 26.947, 29.171) contains.

CIELCh(61, 26.938, 29.187)	3
<i>Conversions</i>	4
<i>Details</i>	6
<i>Harmonies</i>	11
<i>Previews</i>	20
<i>Color Blindness Simulation</i>	23
<i>CSS Examples</i>	26

Color

CIELCh(61, 26.938, 29.187)

Conversions

Conversions Part 1

Format	Color
Hex	C2837D
RGB	194, 131, 125
RGB Percent	76%, 51%, 49%
CMY	0.2386, 0.4857, 0.5092
CMYK	0.00, 0.32, 0.36, 0.24
HSL	5°, 36%, 63%
HSV	5°, 36%, 76%
XYZ	34.1376, 29.2481, 23.2972
YIQ	149.1530, 39.4740, 11.4900

Conversions

Conversions Part 2

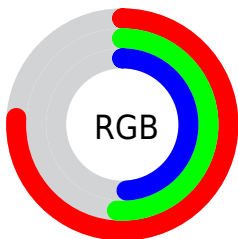
Format	Color
RYB	194, 132, 125
Decimal	12747645
CIELab	61.00, 23.52, 13.14
CIElCh	61, 26.938, 29.187
Yxy	29.2481, 0.3938, 0.3374
Android (android.graphics.Color)	4290937725 (0xFFC2837D)
YUV	149.1530, -11.9074, 39.3308
Hunter-Lab	54.0815, 18.0309, 12.3162

Details

The CIELCh color **61, 26.938, 29.187** is a light color, and the websafe version is hex **CC9999**. A complement of this color would be **72, 20.837, 206.960**, and the grayscale version is **62, 0.008, 296.813**.

A 20% lighter version of the original color is **81, 27.014, 28.205**, and **41, 26.726, 29.560** is the 20% darker color. If you saturate the color by 10%, you get **57, 35.858, 30.267**, and if you desaturate by 10%, it is **66, 18.596, 28.400**.

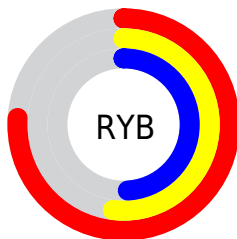
Distribution



Red (76%)

Green (51%)

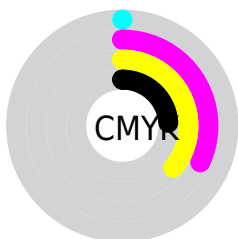
Blue (49%)



Red (76%)

Yellow (52%)

Blue (49%)

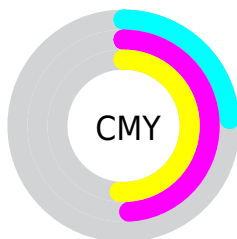


Cyan (0%)

Magenta (32%)

Yellow (36%)

Black (24%)



Cyan (24%)

Magenta (49%)

Yellow (51%)

Brightness & Saturation Gradients

These gradients show how the CIELCh color 61, 26.938, 29.187 changes by changing the brightness by 10 percent. The first figure shows a shift by +10% for each color and the second figure -10%.

Similar to the brightness gradients but the following saturation gradients show a change of the CIELCh color 61, 26.938, 29.187 by changing the saturation by 10% instead.

61, 26.938, 29.187

61, 26.938, 29.187

100, 26.938,
29.187

51, 26.938, 29.187

81, 26.938, 29.187

41, 26.938, 29.187

91, 26.938, 29.187

31, 26.938, 29.187

21, 26.938, 29.187

11, 26.938, 29.187

1, 26.938, 29.187

0, 26.938, 29.187

61, 26.938, 29.187

61, 26.938, 29.187

57, 35.858, 30.267

66, 18.596, 28.400

■ 52, 45.274, 31.698

■ 71, 10.862, 27.819

■ 49, 55.009, 33.538

■ 76, 3.720, 27.332

■ 46, 64.755, 35.769

■ 81, 2.870, 207.406

■ 43, 73.917, 38.164

■ 86, 8.958, 207.111

■ 42, 81.211, 40.045

■ 91, 14.598,
206.994

■ 41, 83.918, 40.935

■ 96, 19.864,
198.196

Harmonies

Complementary

The Complementary color scheme is a pair of colors which are on the opposite of each other on the color wheel.



61, 26.938, 29.187



72, 20.837, 206.960

Rectangle

The Rectangle color scheme consists of four colors that form a rectangle on the color wheel.



61, 26.938, 29.187



61, 26.938, 79.187



61, 26.938, 209.187



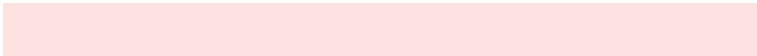
61, 26.938, 259.187

Sweetspot

The Sweet Spot groups the original color and five complimentary colors.



61, 26.936, 29.192



92, 9.343, 27.609



62, 42.858, 328.800



49, 6.365, 27.674



0, 0.000, 0.000



53, 0.007, 296.813

Same Dimension

The Same Dimension uses a secret algorithm to generate beautiful new colors.



61, 26.936, 29.192



73, 41.607, 30.042



69, 25.224, 79.221



38, 3.856, 27.525



34, 72.517, 40.948



4, 13.235, 24.447

Inverse Universe

The Inverse Universe completely reimagines the original color for something new.



72, 20.837, 206.960



90, 30.026, 207.075



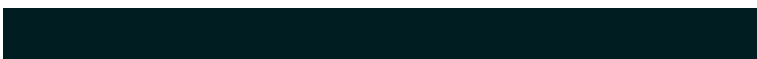
63, 24.006, 269.770



40, 3.631, 207.194



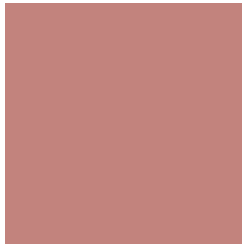
55, 31.959, 211.442



9, 11.305, 207.924

Previews

White Background



This preview shows how the CIELCh color 61, 26.938, 29.187 looks on a white background.

Color Contrast Check

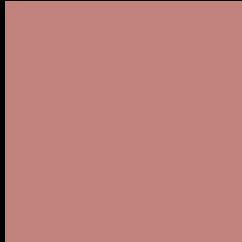
Large Text (above 18pt) WCAG AA ✓ Pass

Any Text WCAG AA ✗ Fail

Large Text (above 18pt) WCAG AAA ✗ Fail

Any Text WCAG AAA ✗ Fail

Black Background



This preview shows how the CIE LCh color 61, 26.938, 29.187 looks on a black background.

Color Contrast Check

Large Text (above 18pt) WCAG AA ✓ Pass

Any Text WCAG AA ✓ Pass

Large Text (above 18pt) WCAG AAA ✓ Pass

Any Text WCAG AAA × Fail

If you want to check with other color combinations, try the [Color Contrast Checker](#).

CIELCh 61, 26.938, 29.187

Background



This preview shows how black text looks on a background with the CIELCh color 61, 26.938, 29.187.

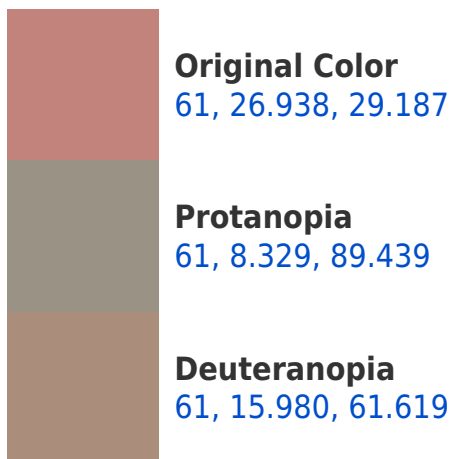


This preview shows how white text looks on a background with the CIELCh color 61, 26.938, 29.187.

Color Blindness Simulation

Color vision deficiency is a very complex topic, and I could not describe the different causes any better than Wikipedia does, so if you want to learn more, you should check out their [article about color blindness](#).

Dichromacy





Tritanopia
61, 27.336, 10.827

Trichromacy



Original Color
61, 26.938, 29.187

Protanomaly
61, 13.169, 48.104

Deuteranomaly
61, 19.140, 44.855

Tritanomaly
61, 26.884, 17.643

Monochromacy



Original Color
61, 26.938, 29.187

Achromatopsia
62, 0.008, 296.813

Achromatomaly
61, 8.999, 30.915

CSS Examples

Text

The CSS property to change the color of the text to CIELCh 61, 26.938, 29.187 is called "color". The color property can be set on classes, ids or directly on the HTML element.

This example shows how text in the color `rgb(194, 131, 125)` looks like.

```
.text, #text, p{  
    color:rgb(194, 131, 125)  
}
```

If you want to add a text shadow in that color use the text-shadow property, you can generate a text shadow directly with our [CSS Text Shadow Generator](#).

Here you see how black text with a 4 pixel rgb(194, 131, 125) colored shadow looks like.

```
.shadow{ text-shadow: 4px 4px 2px rgb(194, 131, 125) }
```

Border

The CSS property to change the border of an element to CIELCh 61, 26.938, 29.187 is called "border". The border property can be set on classes, ids or directly on the HTML element.

This example shows the color as border, it can be applied via the CSS property "border" or "border-color".

```
.border, #border, table{ border:4px solid rgb(194, 131, 125) }
```

If only the border color should be changed use the property `border-color`.

```
.border{ border-color:rgb(194, 131, 125) }
```

If you want to add a box shadow in that color use:

Here you see how a box with a 4 pixel `rgb(194, 131, 125)` colored shadow looks like.

```
.boxshadow{ -moz-box-shadow:4px 4px 4px  
4px rgb(194, 131, 125); -webkit-box-  
shadow:4px 4px 4px 4px rgb(194, 131, 125);  
box-shadow:4px 4px 4px 4px rgb(194, 131,  
125) }
```

Background

The CSS property to change the background color of an element to CIELCh 61, 26.938, 29.187 is called "background". The background property can be set on classes, ids or directly on the HTML element.

```
.background, #background, body{  
background: rgb(194, 131, 125) }
```

If only the background color should be changed can be used:

```
.background{ background-color: rgb(194,  
131, 125) }
```

This example shows the color as background, it is applied via the CSS property "background".

To optimize and compress your CSS code, you can use our [online CSS compressor and optimizer](#) based on csstidy. If you want to create a linear or radial gradient as background or border, check our [CSS Gradient Generator](#).

Hey! You found this booklet interesting? Support Converting Colors with the new Membership Option!

The pro membership hides all ads, plus gives you double the colors in the color bucket, and more awesome pro features!

[Learn more, Memberships starting at \\$2.50/m!](#)

**Follow me
on Twitter!**

@ConvertingColor