

Converting Colors

CIELCh(61, 29.814, 45.753)

Have a look what the booklet for
CIELCh(61, 29.814, 45.753) contains.

CIELCh(61, 29.761, 45.755)	3
<i>Conversions</i>	4
<i>Details</i>	6
<i>Harmonies</i>	11
<i>Previews</i>	20
<i>Color Blindness Simulation</i>	23
<i>CSS Examples</i>	26

Color

CIELCh(61, 29.761, 45.755)

Conversions

Conversions Part 1

Format	Color
Hex	C2856F
RGB	194, 133, 111
RGB Percent	76%, 52%, 44%
CMY	0.2406, 0.4797, 0.5659
CMYK	0.00, 0.31, 0.43, 0.24
HSL	16°, 40%, 60%
HSV	16°, 43%, 76%
XYZ	33.3506, 29.2481, 18.8357
YIQ	148.7310, 43.4180, 6.0900

Conversions

Conversions Part 2

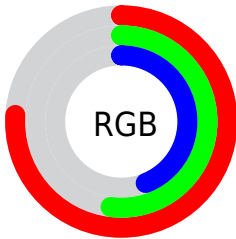
Format	Color
RYB	194, 141, 111
Decimal	12748143
CIELab	61.00, 20.77, 21.32
CIELCh	61, 29.761, 45.755
Yxy	29.2481, 0.4095, 0.3592
Android (android.graphics.Color)	4290938223 (0xFFC2856F)
YUV	148.7310, -18.6014, 39.7009
Hunter-Lab	54.0815, 15.4332, 17.2074

Details

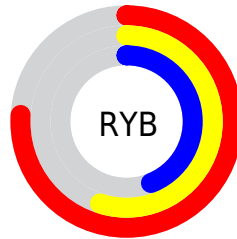
The CIELCh color $61, 29.761, 45.755$ is a dark color, and the websafe version is hex `CC9999`. A complement of this color would be $67, 22.276, 231.441$, and the grayscale version is $62, 0.008, 296.813$.

A 20% lighter version of the original color is $81, 29.632, 45.169$, and $41, 29.769, 45.886$ is the 20% darker color. If you saturate the color by 10%, you get $57, 38.174, 45.743$, and if you desaturate by 10%, it is $65, 21.915, 45.924$.

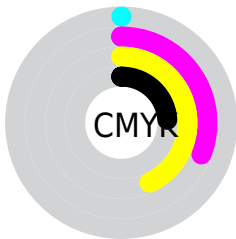
Distribution



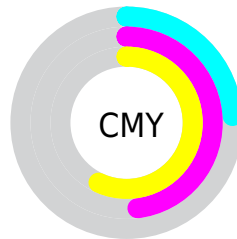
- Red (76%)
- Green (52%)
- Blue (44%)



- Red (76%)
- Yellow (55%)
- Blue (44%)



- Cyan (0%)
- Magenta (31%)
- Yellow (43%)
- Black (24%)



- Cyan (24%)
- Magenta (48%)
- Yellow (57%)

Brightness & Saturation Gradients

These gradients show how the CIELCh color 61, 29.761, 45.755 changes by changing the brightness by 10 percent. The first figure shows a shift by +10% for each color and the second figure -10%.

Similar to the brightness gradients but the following saturation gradients show a change of the CIELCh color 61, 29.761, 45.755 by changing the saturation by 10% instead.

■ 61, 29.761, 45.755

■ 61, 29.761, 45.755

■ 100, 29.761,
45.755

■ 51, 29.761, 45.755

■ 81, 29.761, 45.755

■ 41, 29.761, 45.755

■ 91, 29.761, 45.755

■ 31, 29.761, 45.755

■ 21, 29.761, 45.755

■ 11, 29.761, 45.755

■ 1, 29.761, 45.755

■ 0, 29.761, 45.755

■ 61, 29.761, 45.755

■ 61, 29.761, 45.755

■ 57, 38.174, 45.743

■ 65, 21.915, 45.924

54, 47.094, 45.880

69, 14.642, 46.210

51, 56.337, 46.131

73, 7.912, 46.578

48, 65.468, 46.343

77, 1.682, 46.813

45, 73.531, 46.120

81, 4.099, 227.768

44, 78.363, 45.762

86, 9.478, 228.262

90, 14.505,
228.831

94, 17.645,
212.807

96, 20.021,
198.186

Harmonies

Complementary

The Complementary color scheme is a pair of colors which are on the opposite of each other on the color wheel.



61, 29.761, 45.755



67, 22.276, 231.441

Rectangle

The Rectangle color scheme consists of four colors that form a rectangle on the color wheel.



61, 29.761, 45.755



61, 29.761, 95.755



61, 29.761, 225.755



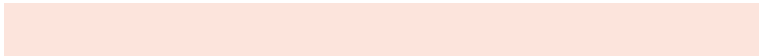
61, 29.761, 275.755

Sweetspot

The Sweet Spot groups the original color and five complimentary colors.



61, 29.760, 45.760



92, 9.950, 46.563



58, 45.662, 335.341



49, 7.082, 46.477



0, 0.000, 0.000



53, 0.007, 296.813

Same Dimension

The Same Dimension uses a secret algorithm to generate beautiful new colors.



61, 29.760, 45.760



74, 45.519, 45.738



71, 34.677, 91.950



39, 3.449, 46.710



36, 67.887, 46.188



5, 12.048, 36.508

Inverse Universe

The Inverse Universe completely reimagines the original color for something new.



67, 22.276, 231.441



83, 31.643, 233.048



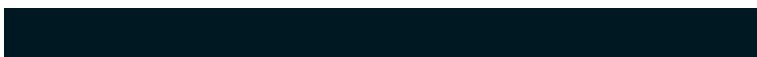
56, 35.927, 284.173



40, 3.270, 227.903



46, 32.859, 248.774



7, 10.399, 239.305

Previews

White Background



This preview shows how the CIELCh color 61, 29.761, 45.755 looks on a white background.

Color Contrast Check

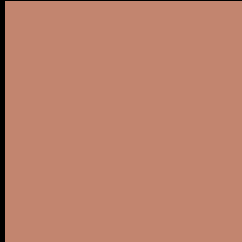
Large Text (above 18pt) WCAG AA ✓ Pass

Any Text WCAG AA ✗ Fail

Large Text (above 18pt) WCAG AAA ✗ Fail

Any Text WCAG AAA ✗ Fail

Black Background



This preview shows how the CIE LCh color 61, 29.761, 45.755 looks on a black background.

Color Contrast Check

Large Text (above 18pt) WCAG AA ✓ Pass

Any Text WCAG AA ✓ Pass

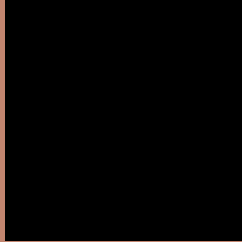
Large Text (above 18pt) WCAG AAA ✓ Pass

Any Text WCAG AAA × Fail

If you want to check with other color combinations, try the [Color Contrast Checker](#).

CIELCh 61, 29.761, 45.755

Background



This preview shows how black text looks on a background with the CIELCh color 61, 29.761, 45.755.



This preview shows how white text looks on a background with the CIELCh color 61, 29.761, 45.755.

Color Blindness Simulation

Color vision deficiency is a very complex topic, and I could not describe the different causes any better than Wikipedia does, so if you want to learn more, you should check out their [article about color blindness](#).

Dichromacy



Original Color

61, 29.761, 45.755

Protanopia

61, 17.293, 94.212

Deuteranopia

61, 23.179, 70.035



Tritanopia
61, 27.714, 12.195

Trichromacy



Original Color
61, 29.761, 45.755

Protanomaly
61, 19.447, 70.510

Deuteranomaly
61, 24.758, 59.445

Tritanomaly
61, 27.316, 24.604

Monochromacy



Original Color
61, 29.761, 45.755

Achromatopsia
61, 0.008, 296.813

Achromatomaly
61, 10.421, 45.561

CSS Examples

Text

The CSS property to change the color of the text to CIELCh 61, 29.761, 45.755 is called "color". The color property can be set on classes, ids or directly on the HTML element.

This example shows how text in the color `rgb(194, 133, 111)` looks like.

```
.text, #text, p{  
    color:rgb(194, 133, 111)  
}
```

If you want to add a text shadow in that color use the text-shadow property, you can generate a text shadow directly with our [CSS Text Shadow Generator](#).

Here you see how black text with a 4 pixel rgb(194, 133, 111) colored shadow looks like.

```
.shadow{ text-shadow: 4px 4px 2px rgb(194, 133, 111) }
```

Border

The CSS property to change the border of an element to CIELCh 61, 29.761, 45.755 is called "border". The border property can be set on classes, ids or directly on the HTML element.

This example shows the color as border, it can be applied via the CSS property "border" or "border-color".

```
.border, #border, table{ border:4px solid rgb(194, 133, 111) }
```

If only the border color should be changed use the property `border-color`.

```
.border{ border-color:rgb(194, 133, 111) }
```

If you want to add a box shadow in that color use:

Here you see how a box with a 4 pixel `rgb(194, 133, 111)` colored shadow looks like.

```
.boxshadow{ -moz-box-shadow:4px 4px 4px  
4px rgb(194, 133, 111); -webkit-box-  
shadow:4px 4px 4px 4px rgb(194, 133, 111);  
box-shadow:4px 4px 4px 4px rgb(194, 133,  
111) }
```

Background

The CSS property to change the background color of an element to CIELCh 61, 29.761, 45.755 is called "background". The background property can be set on classes, ids or directly on the HTML element.

```
.background, #background, body{  
background: rgb(194, 133, 111) }
```

If only the background color should be changed can be used:

```
.background{ background-color: rgb(194,  
133, 111) }
```

This example shows the color as background, it is applied via the CSS property "background".

To optimize and compress your CSS code, you can use our [online CSS compressor and optimizer](#) based on csstidy. If you want to create a linear or radial gradient as background or border, check our [CSS Gradient Generator](#).

Hey! You found this booklet interesting? Support Converting Colors with the new Membership Option!

The pro membership hides all ads, plus gives you double the colors in the color bucket, and more awesome pro features!

[Learn more, Memberships starting at \\$2.50/m!](#)

**Follow me
on Twitter!**

@ConvertingColor