

Converting Colors

CIELCh(61, 30.670, 66.380)

Have a look what the booklet for
CIELCh(61, 30.670, 66.380) contains.

CIELCh(61, 30.834, 66.092)	3
<i>Conversions</i>	4
<i>Details</i>	6
<i>Harmonies</i>	11
<i>Previews</i>	20
<i>Color Blindness Simulation</i>	23
<i>CSS Examples</i>	26

Color

CIELCh(61, 30.834, 66.092)

Conversions

Conversions Part 1

Format	Color
Hex	B88A62
RGB	184, 138, 98
RGB Percent	72%, 54%, 38%
CMY	0.2784, 0.4588, 0.6157
CMYK	0.00, 0.25, 0.47, 0.28
HSL	28°, 38%, 55%
HSV	28°, 47%, 72%
XYZ	31.0592, 29.2481, 15.5630
YIQ	147.1940, 40.2560, -2.6880

Conversions

Conversions Part 2

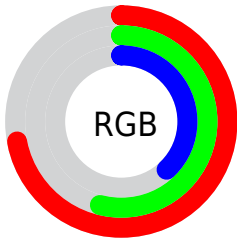
Format	Color
RYB	184, 173, 98
Decimal	12094050
CIELab	61.00, 12.50, 28.19
CIElCh	61, 30.834, 66.092
Yxy	29.2481, 0.4094, 0.3855
Android (android.graphics.Color)	4290284130 (0xFFB88A62)
YUV	147.1940, -24.2526, 32.2789
Hunter-Lab	54.0815, 7.8703, 20.7952

Details

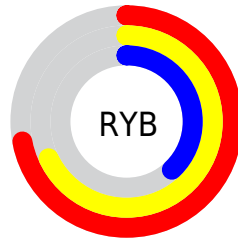
The CIELCh color **61, 30.834, 66.092** is a dark color, and the websafe version is hex **CC9966**. A complement of this color would be **58, 26.142, 259.867**, and the grayscale version is **61, 0.008, 296.813**.

A 20% lighter version of the original color is **81, 30.937, 65.558**, and **41, 30.757, 65.601** is the 20% darker color. If you saturate the color by 10%, you get **58, 38.366, 64.933**, and if you desaturate by 10%, it is **64, 23.607, 67.258**.

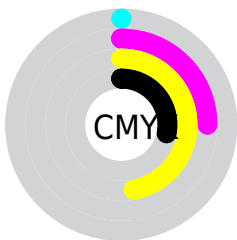
Distribution



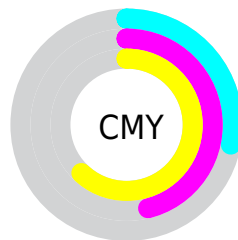
- Red (72%)
- Green (54%)
- Blue (38%)



- Red (72%)
- Yellow (68%)
- Blue (38%)



- Cyan (0%)
- Magenta (25%)
- Yellow (47%)
- Black (28%)



- Cyan (28%)
- Magenta (46%)
- Yellow (62%)

Brightness & Saturation Gradients

These gradients show how the CIELCh color 61, 30.834, 66.092 changes by changing the brightness by 10 percent. The first figure shows a shift by +10% for each color and the second figure -10%.

Similar to the brightness gradients but the following saturation gradients show a change of the CIELCh color 61, 30.834, 66.092 by changing the saturation by 10% instead.

61, 30.834, 66.092

61, 30.834, 66.092

100, 30.834,
66.092

51, 30.834, 66.092

81, 30.834, 66.092

41, 30.834, 66.092

91, 30.834, 66.092

31, 30.834, 66.092

21, 30.834, 66.092

11, 30.834, 66.092

1, 30.834, 66.092

0, 30.834, 66.092

61, 30.834, 66.092

61, 30.834, 66.092

58, 38.366, 64.933

64, 23.607, 67.258

56, 46.080, 63.734

67, 16.729, 68.421

53, 53.690, 62.411

70, 10.199, 69.578

51, 60.623, 60.772

73, 3.999, 70.686

49, 66.042, 58.515

76, 1.898, 252.124

48, 67.741, 57.826

79, 7.524, 253.104

82, 12.908,
254.180

85, 18.078,
255.233

88, 19.771,
247.772

Harmonies

Complementary

The Complementary color scheme is a pair of colors which are on the opposite of each other on the color wheel.



61, 30.834, 66.092



58, 26.142, 259.867

Rectangle

The Rectangle color scheme consists of four colors that form a rectangle on the color wheel.



61, 30.834, 66.092



61, 30.834, 116.092



61, 30.834, 246.092



61, 30.834, 296.092

Sweetspot

The Sweet Spot groups the original color and five complimentary colors.



61, 30.834, 66.097



89, 10.506, 69.864



53, 41.871, 345.544



47, 7.289, 69.619



97, 0.011, 296.813



50, 0.007, 296.813

Same Dimension

The Same Dimension uses a secret algorithm to generate beautiful new colors.



61, 30.834, 66.097



74, 46.966, 64.910



72, 43.156, 103.438



37, 3.379, 70.411



41, 59.647, 58.357



5, 8.722, 57.397

Inverse Universe

The Inverse Universe completely reimagines the original color for something new.



58, 26.142, 259.867



70, 38.286, 262.783



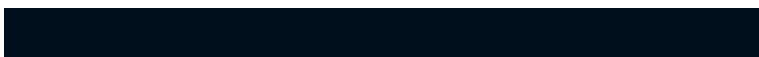
46, 48.343, 294.877



37, 3.291, 252.779



35, 45.952, 279.750



4, 9.887, 264.378

Previews

White Background



This preview shows how the CIELCh color 61, 30.834, 66.092 looks on a white background.

Color Contrast Check

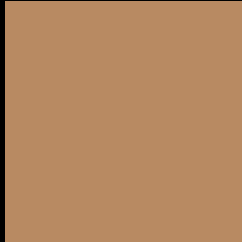
Large Text (above 18pt) WCAG AA ✓ Pass

Any Text WCAG AA ✗ Fail

Large Text (above 18pt) WCAG AAA ✗ Fail

Any Text WCAG AAA ✗ Fail

Black Background



This preview shows how the CIELCh color 61, 30.834, 66.092 looks on a black background.

Color Contrast Check

Large Text (above 18pt) WCAG AA ✓ Pass

Any Text WCAG AA ✓ Pass

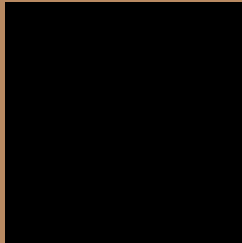
Large Text (above 18pt) WCAG AAA ✓ Pass

Any Text WCAG AAA × Fail

If you want to check with other color combinations, try the [Color Contrast Checker](#).

CIELCh 61, 30.834, 66.092

Background



This preview shows how black text looks on a background with the CIELCh color 61, 30.834, 66.092.



This preview shows how white text looks on a background with the CIELCh color 61, 30.834, 66.092.

Color Blindness Simulation

Color vision deficiency is a very complex topic, and I could not describe the different causes any better than Wikipedia does, so if you want to learn more, you should check out their [article about color blindness](#).

Dichromacy



Original Color

61, 30.834, 66.092

Protanopia

61, 25.585, 95.596

Deuteranopia

61, 29.646, 74.773



Tritanopia
61, 23.214, 8.148

Trichromacy



Original Color
61, 30.834, 66.092

Protanomaly
61, 26.331, 83.916

Deuteranomaly
61, 30.300, 71.520

Tritanomaly
61, 22.875, 32.750

Monochromacy



Original Color
61, 30.834, 66.092

Achromatopsia
61, 0.008, 296.813

Achromatomaly
61, 10.699, 71.336

CSS Examples

Text

The CSS property to change the color of the text to CIELCh 61, 30.834, 66.092 is called "color". The color property can be set on classes, ids or directly on the HTML element.

This example shows how text in the color `rgb(184, 138, 98)` looks like.

```
.text, #text, p{  
    color:rgb(184, 138, 98)  
}
```

If you want to add a text shadow in that color use the text-shadow property, you can generate a text shadow directly with our [CSS Text Shadow Generator](#).

Here you see how black text with a 4 pixel rgb(184, 138, 98) colored shadow looks like.

```
.shadow{ text-shadow: 4px 4px 2px rgb(184, 138, 98) }
```

Border

The CSS property to change the border of an element to CIELCh 61, 30.834, 66.092 is called "border". The border property can be set on classes, ids or directly on the HTML element.

This example shows the color as border, it can be applied via the CSS property "border" or "border-color".

```
.border, #border, table{ border:4px solid rgb(184, 138, 98) }
```

If only the border color should be changed use the property `border-color`.

```
.border{ border-color:rgb(184, 138, 98) }
```

If you want to add a box shadow in that color use:

Here you see how a box with a 4 pixel `rgb(184, 138, 98)` colored shadow looks like.

```
.boxshadow{ -moz-box-shadow:4px 4px 4px  
4px rgb(184, 138, 98); -webkit-box-  
shadow:4px 4px 4px 4px rgb(184, 138, 98);  
box-shadow:4px 4px 4px 4px rgb(184, 138,  
98) }
```

Background

The CSS property to change the background color of an element to CIELCh 61, 30.834, 66.092 is called "background". The background property can be set on classes, ids or directly on the HTML element.

```
.background, #background, body{  
background: rgb(184, 138, 98) }
```

If only the background color should be changed can be used:

```
.background{ background-color: rgb(184,  
138, 98) }
```

This example shows the color as background, it is applied via the CSS property "background".

To optimize and compress your CSS code, you can use our [online CSS compressor and optimizer](#) based on csstidy. If you want to create a linear or radial gradient as background or border, check our [CSS Gradient Generator](#).

Hey! You found this booklet interesting? Support Converting Colors with the new Membership Option!

The pro membership hides all ads, plus gives you double the colors in the color bucket, and more awesome pro features!

[Learn more, Memberships starting at \\$2.50/m!](#)

**Follow me
on Twitter!**

@ConvertingColor