

# Converting Colors

CIELCh(61, 34.979, 26.072)

Have a look what the booklet for  
CIELCh(61, 34.979, 26.072) contains.

<b>CIELCh(61, 34.968, 25.899)</b> .....	3
<i><b>Conversions</b></i> .....	4
<i><b>Details</b></i> .....	6
<i><b>Harmonies</b></i> .....	11
<i><b>Previews</b></i> .....	20
<i><b>Color Blindness Simulation</b></i> .....	23
<i><b>CSS Examples</b></i> .....	26

# Color

**CIELCh(61, 34.968, 25.899)**

# Conversions

## Conversions Part 1

<b>Format</b>	<b>Color</b>
Hex	CF7D7A
RGB	207, 125, 122
RGB Percent	81%, 49%, 48%
CMY	0.1891, 0.5106, 0.5223
CMYK	0.00, 0.40, 0.41, 0.19
HSL	2°, 47%, 64%
HSV	2°, 41%, 81%
XYZ	36.4765, 29.2481, 22.0708
YIQ	149.1760, 49.8350, 16.4510

# Conversions

## Conversions Part 2

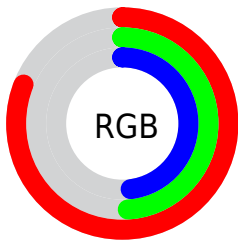
<b>Format</b>	<b>Color</b>
<b>R<sub>YB</sub></b>	207, 125, 122
Decimal	13598074
CIE <sub>Lab</sub>	61.00, 31.46, 15.27
CIE <sub>LCh</sub>	61, 34.968, 25.899
Yxy	29.2481, 0.4155, 0.3331
Android (android.graphics.Color)	4291788154 (0xFFCF7D7A)
YUV	149.1760, -13.3978, 50.7116
Hunter-Lab	54.0815, 25.7506, 13.6607

# Details

The CIELCh color **61, 34.968, 25.899** is a dark color, and the websafe version is hex **CC6666**. A complement of this color would be **77, 25.942, 201.140**, and the grayscale version is **62, 0.008, 296.813**.

A 20% lighter version of the original color is **80, 30.290, 26.835**, and **41, 35.266, 25.945** is the 20% darker color. If you saturate the color by 10%, you get **56, 44.938, 27.542**, and if you desaturate by 10%, it is **66, 25.496, 24.656**.

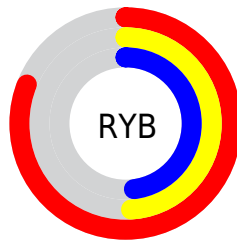
# Distribution



Red (81%)

Green (49%)

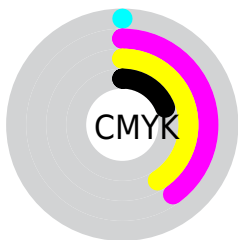
Blue (48%)



Red (81%)

Yellow (49%)

Blue (48%)

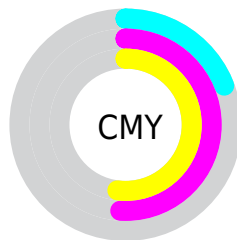


Cyan (0%)

Magenta (40%)

Yellow (41%)

Black (19%)



Cyan (19%)

Magenta (51%)

Yellow (52%)

# Brightness & Saturation Gradients

These gradients show how the CIELCh color 61, 34.968, 25.899 changes by changing the brightness by 10 percent. The first figure shows a shift by +10% for each color and the second figure -10%.

Similar to the brightness gradients but the following saturation gradients show a change of the CIELCh color 61, 34.968, 25.899 by changing the saturation by 10% instead.



61, 34.968, 25.899

61, 34.968, 25.899

100, 34.968,  
25.899

51, 34.968, 25.899

81, 34.968, 25.899

41, 34.968, 25.899

91, 34.968, 25.899

31, 34.968, 25.899

21, 34.968, 25.899

11, 34.968, 25.899

1, 34.968, 25.899

0, 34.968, 25.899

61, 34.968, 25.899

61, 34.968, 25.899

56, 44.938, 27.542

66, 25.496, 24.656

■ 52, 55.218, 29.662

■ 71, 16.630, 23.709

■ 49, 65.500, 32.309

■ 77, 8.402, 22.971

■ 46, 75.298, 35.361

■ 82, 0.796, 21.794

■ 44, 83.629, 38.288

■ 88, 6.229, 202.200

■ 43, 88.819, 40.323

■ 94, 12.727,  
201.851

■ 97, 16.011,  
198.441

# Harmonies

# Complementary

The Complementary color scheme is a pair of colors which are on the opposite of each other on the color wheel.



61, 34.968, 25.899



77, 25.942, 201.140

# Rectangle

The Rectangle color scheme consists of four colors that form a rectangle on the color wheel.



61, 34.968, 25.899



61, 34.968, 75.899



61, 34.968, 205.899



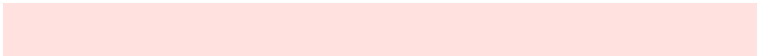
61, 34.968, 255.899

# Sweetspot

The Sweet Spot groups the original color and five complimentary colors.



61, 34.966, 25.903



92, 10.820, 23.042



63, 53.597, 327.584



48, 7.215, 23.133



0, 0.000, 0.000



53, 0.007, 296.813



# Same Dimension

The Same Dimension uses a secret algorithm to generate beautiful new colors.



61, 34.966, 25.903



70, 50.854, 27.268



71, 30.141, 73.638



41, 4.308, 22.859



35, 75.970, 40.308



5, 19.588, 21.200





# Inverse Universe

The Inverse Universe completely reimagines the original color for something new.



77, 25.942, 201.140



92, 35.088, 201.030



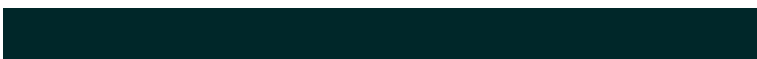
65, 27.476, 266.156



43, 4.056, 202.139



61, 34.990, 202.071

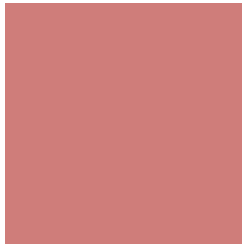


13, 13.499, 200.921



# Previews

## White Background



This preview shows how the CIELCh color 61, 34.968, 25.899 looks on a white background.

## Color Contrast Check

Large Text (above 18pt) WCAG AA ✓ Pass

Any Text WCAG AA ✗ Fail

Large Text (above 18pt) WCAG AAA ✗ Fail

Any Text WCAG AAA ✗ Fail

# Black Background



This preview shows how the CIELCh color 61, 34.968, 25.899 looks on a black background.

## Color Contrast Check

Large Text (above 18pt) WCAG AA ✓ Pass

Any Text WCAG AA ✓ Pass

Large Text (above 18pt) WCAG AAA ✓ Pass

Any Text WCAG AAA × Fail

If you want to check with other color combinations, try the [Color Contrast Checker](#).

**CIELCh 61, 34.968, 25.899**

## **Background**



This preview shows how black text looks on a background with the CIELCh color 61, 34.968, 25.899.

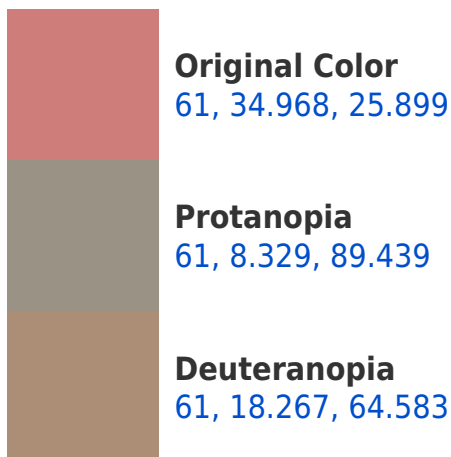


This preview shows how white text looks on a background with the CIELCh color 61, 34.968, 25.899.

# Color Blindness Simulation

Color vision deficiency is a very complex topic, and I could not describe the different causes any better than Wikipedia does, so if you want to learn more, you should check out their [article about color blindness](#).

## Dichromacy





**Tritanopia**  
61, 35.351, 15.510



# Trichromacy



**Original Color**  
61, 34.968, 25.899

**Protanomaly**  
61, 15.269, 42.035

**Deuteranomaly**  
61, 22.980, 43.917

**Tritanomaly**  
61, 35.140, 19.829

# Monochromacy



**Original Color**  
61, 34.968, 25.899

**Achromatopsia**  
62, 0.008, 296.813

**Achromatomaly**  
61, 12.142, 23.212

# CSS Examples

## Text

The CSS property to change the color of the text to CIELCh 61, 34.968, 25.899 is called "color". The color property can be set on classes, ids or directly on the HTML element.

This example shows how text in the color `rgb(207, 125, 122)` looks like.

```
.text, #text, p{  
    color:rgb(207, 125, 122)  
}
```

If you want to add a text shadow in that color use the text-shadow property, you can generate a text shadow directly with our [CSS Text Shadow Generator](#).

Here you see how black text with a 4 pixel rgb(207, 125, 122) colored shadow looks like.

```
.shadow{ text-shadow: 4px 4px 2px rgb(207, 125, 122) }
```

## Border

The CSS property to change the border of an element to CIELCh 61, 34.968, 25.899 is called "border". The border property can be set on classes, ids or directly on the HTML element.

This example shows the color as border, it can be applied via the CSS property "border" or "border-color".

```
.border, #border, table{ border:4px solid rgb(207, 125, 122) }
```

If only the border color should be changed use the property border-color.

```
.border{ border-color:rgb(207, 125, 122) }
```

If you want to add a box shadow in that color use:

Here you see how a box with a 4 pixel rgb(207, 125, 122) colored shadow looks like.

```
.boxshadow{ -moz-box-shadow:4px 4px 4px  
4px rgb(207, 125, 122); -webkit-box-  
shadow:4px 4px 4px 4px rgb(207, 125, 122);  
box-shadow:4px 4px 4px 4px rgb(207, 125,  
122) }
```

# Background

The CSS property to change the background color of an element to CIELCh 61, 34.968, 25.899 is called "background". The background property can be set on classes, ids or directly on the HTML element.

```
.background, #background, body{  
background: rgb(207, 125, 122) }
```

If only the background color should be changed can be used:

```
.background{ background-color: rgb(207,  
125, 122) }
```

This example shows the color as background, it is applied via the CSS property "background".

To optimize and compress your CSS code, you can use our [online CSS compressor and optimizer](#) based on csstidy. If you want to create a linear or radial gradient as background or border, check our [CSS Gradient Generator](#).

Hey! You found this booklet interesting? Support Converting Colors with the new Membership Option!

The pro membership hides all ads, plus gives you double the colors in the color bucket, and more awesome pro features!

**[Learn more, Memberships starting at \\$2.50/m!](#)**

**Follow me  
on Twitter!**

@ConvertingColor