

Converting Colors

CIELCh(61, 44.552, 8.690)

Have a look what the booklet for
CIELCh(61, 44.552, 8.690) contains.

CIELCh(61, 44.544, 8.752)	3
<i>Conversions</i>	4
<i>Details</i>	6
<i>Harmonies</i>	11
<i>Previews</i>	20
<i>Color Blindness Simulation</i>	23
<i>CSS Examples</i>	26

Color

CIELCh(61, 44.544, 8.752)

Conversions

Conversions Part 1

Format	Color
Hex	DD7289
RGB	221, 114, 137
RGB Percent	87%, 45%, 54%
CMY	0.1330, 0.5526, 0.4624
CMYK	0.00, 0.48, 0.38, 0.13
HSL	347°, 61%, 66%
HSV	347°, 48%, 87%
XYZ	40.3944, 29.2481, 27.2135
YIQ	148.6150, 56.3890, 29.8370

Conversions

Conversions Part 2

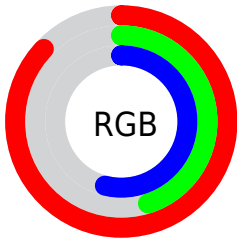
Format	Color
R _Y B	221, 114, 137
Decimal	14512777
CIE Lab	61.00, 44.03, 6.78
CIE LCh	61, 44.544, 8.752
Yxy	29.2481, 0.4171, 0.3020
Android (android.graphics.Color)	4292702857 (0xFFDD7289)
YUV	148.6150, -5.7262, 63.4816
Hunter-Lab	54.0815, 38.6819, 8.0227

Details

The CIELCh color **61, 44.544, 8.752** is a light color, and the websafe version is hex **CC6666**. A complement of this color would be **82, 36.467, 177.225**, and the grayscale version is **62, 0.008, 296.813**.

A 20% lighter version of the original color is **78, 34.936, 3.339**, and **41, 44.524, 9.282** is the 20% darker color. If you saturate the color by 10%, you get **56, 53.871, 11.179**, and if you desaturate by 10%, it is **66, 34.940, 6.823**.

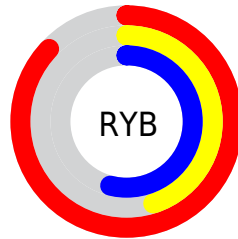
Distribution



Red (87%)

Green (45%)

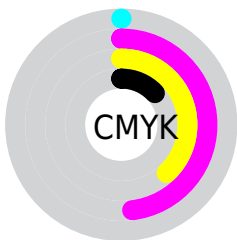
Blue (54%)



Red (87%)

Yellow (45%)

Blue (54%)

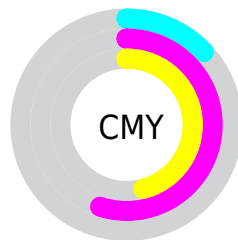


Cyan (0%)

Magenta (48%)

Yellow (38%)

Black (13%)



Cyan (13%)

Magenta (55%)

Yellow (46%)

Brightness & Saturation Gradients


These gradients show how the CIELCh color 61, 44.544, 8.752 changes by changing the brightness by 10 percent. The first figure shows a shift by +10% for each color and the second figure -10%.

Similar to the brightness gradients but the following saturation gradients show a change of the CIELCh color 61, 44.544, 8.752 by changing the saturation by 10% instead.

 61, 44.544, 8.752  61, 44.544, 8.752

 100, 44.544, 8.752  51, 44.544, 8.752

 81, 44.544, 8.752  41, 44.544, 8.752

 91, 44.544, 8.752  31, 44.544, 8.752

 21, 44.544, 8.752

 11, 44.544, 8.752

 1, 44.544, 8.752

 0, 44.544, 8.752

 61, 44.544, 8.752  61, 44.544, 8.752

 56, 53.871, 11.179  66, 34.940, 6.823

■ 53, 62.547, 14.251

■ 71, 25.382, 5.258

■ 50, 70.218, 18.123

■ 77, 16.081, 3.959

■ 48, 76.719, 22.855

■ 83, 7.160, 2.836

■ 47, 82.242, 28.204

■ 89, 1.325, 182.398

■ 46, 83.129, 29.024

■ 95, 9.362, 181.241

■ 98, 11.448,
198.741

Harmonies

Complementary

The Complementary color scheme is a pair of colors which are on the opposite of each other on the color wheel.



61, 44.544, 8.752



82, 36.467, 177.225

Rectangle

The Rectangle color scheme consists of four colors that form a rectangle on the color wheel.



61, 44.544, 8.752



61, 44.544, 58.752



61, 44.544, 188.752



61, 44.544, 238.752

Sweetspot

The Sweet Spot groups the original color and five complimentary colors.



61, 44.541, 8.754



90, 14.603, 3.577



61, 64.823, 320.358



47, 10.015, 3.823



0, 0.000, 0.000



53, 0.007, 296.813

Same Dimension

The Same Dimension uses a secret algorithm to generate beautiful new colors.



61, 44.541, 8.754



65, 60.069, 11.197



67, 38.049, 47.475



43, 4.821, 2.948



36, 68.772, 28.032



5, 23.756, 10.982

Inverse Universe

The Inverse Universe completely reimagines the original color for something new.



61, 44.541, 8.754



65, 60.069, 11.197



74, 27.412, 235.222



43, 4.821, 2.948



36, 68.772, 28.032



5, 23.756, 10.982

Previews

White Background



This preview shows how the CIELCh color 61, 44.544, 8.752 looks on a white background.

Color Contrast Check

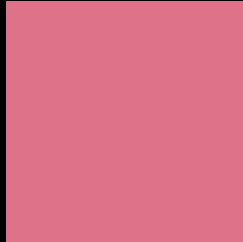
Large Text (above 18pt) WCAG AA ✓ Pass

Any Text WCAG AA ✗ Fail

Large Text (above 18pt) WCAG AAA ✗ Fail

Any Text WCAG AAA ✗ Fail

Black Background



This preview shows how the CIELCh color 61, 44.544, 8.752 looks on a black background.

Color Contrast Check

Large Text (above 18pt) WCAG AA ✓ Pass

Any Text WCAG AA ✓ Pass

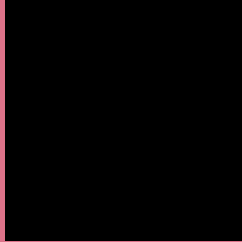
Large Text (above 18pt) WCAG AAA ✓ Pass

Any Text WCAG AAA × Fail

If you want to check with other color combinations, try the [Color Contrast Checker](#).

CIELCh 61, 44.544, 8.752

Background



This preview shows how black text looks on a background with the CIELCh color 61, 44.544, 8.752.

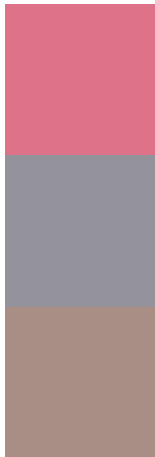


This preview shows how white text looks on a background with the CIELCh color 61, 44.544, 8.752.

Color Blindness Simulation

Color vision deficiency is a very complex topic, and I could not describe the different causes any better than Wikipedia does, so if you want to learn more, you should check out their [article about color blindness](#).

Dichromacy



Original Color

61, 44.544, 8.752

Protanopia

61, 4.528, 295.487

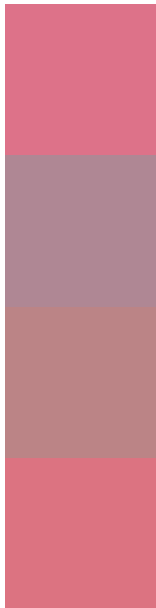
Deuteranopia

61, 12.106, 47.691



Tritanopia
61, 43.532, 18.248

Trichromacy



Original Color
61, 44.544, 8.752

Protanomaly
60, 17.384, 356.563

Deuteranomaly
61, 22.682, 19.029

Tritanomaly
61, 43.729, 14.810

Monochromacy



Original Color
61, 44.544, 8.752

Achromatopsia
62, 0.008, 296.813

Achromatomaly
61, 16.319, 3.213

CSS Examples

Text

The CSS property to change the color of the text to CIELCh 61, 44.544, 8.752 is called "color". The color property can be set on classes, ids or directly on the HTML element.

This example shows how text in the color `rgb(221, 114, 137)` looks like.

```
.text, #text, p{  
    color:rgb(221, 114, 137)  
}
```

If you want to add a text shadow in that color use the text-shadow property, you can generate a text shadow directly with our [CSS Text Shadow Generator](#).

Here you see how black text with a 4 pixel rgb(221, 114, 137) colored shadow looks like.

```
.shadow{ text-shadow: 4px 4px 2px rgb(221, 114, 137) }
```

Border

The CSS property to change the border of an element to CIELCh 61, 44.544, 8.752 is called "border". The border property can be set on classes, ids or directly on the HTML element.

This example shows the color as border, it can be applied via the CSS property "border" or "border-color".

```
.border, #border, table{ border:4px solid rgb(221, 114, 137) }
```

If only the border color should be changed use the property `border-color`.

```
.border{ border-color:rgb(221, 114, 137) }
```

If you want to add a box shadow in that color use:

Here you see how a box with a 4 pixel `rgb(221, 114, 137)` colored shadow looks like.

```
.boxshadow{ -moz-box-shadow:4px 4px 4px  
4px rgb(221, 114, 137); -webkit-box-  
shadow:4px 4px 4px 4px rgb(221, 114, 137);  
box-shadow:4px 4px 4px 4px rgb(221, 114,  
137) }
```

Background

The CSS property to change the background color of an element to CIELCh 61, 44.544, 8.752 is called "background". The background property can be set on classes, ids or directly on the HTML element.

```
.background, #background, body{  
background: rgb(221, 114, 137) }
```

If only the background color should be changed can be used:

```
.background{ background-color: rgb(221,  
114, 137) }
```

This example shows the color as background, it is applied via the CSS property "background".

To optimize and compress your CSS code, you can use our [online CSS compressor and optimizer](#) based on csstidy. If you want to create a linear or radial gradient as background or border, check our [CSS Gradient Generator](#).

Hey! You found this booklet interesting? Support Converting Colors with the new Membership Option!

The pro membership hides all ads, plus gives you double the colors in the color bucket, and more awesome pro features!

[Learn more, Memberships starting at \\$2.50/m!](#)

**Follow me
on Twitter!**

@ConvertingColor