

Converting Colors

CIELCh(61, 63.927, 2.410)

Have a look what the booklet for
CIELCh(61, 63.927, 2.410) contains.

CIELCh(61, 63.939, 2.475)	3
<i>Conversions</i>	4
<i>Details</i>	6
<i>Harmonies</i>	11
<i>Previews</i>	20
<i>Color Blindness Simulation</i>	23
<i>CSS Examples</i>	26

Color

CIELCh(61, 63.939, 2.475)

Conversions

Conversions Part 1

Format	Color
Hex	F75B91
RGB	247, 91, 145
RGB Percent	97%, 36%, 57%
CMY	0.0319, 0.6436, 0.4318
CMYK	0.00, 0.63, 0.41, 0.03
HSL	339°, 91%, 66%
HSV	339°, 63%, 97%
XYZ	47.1386, 29.2481, 29.9003
YIQ	143.8000, 75.6420, 49.8660

Conversions

Conversions Part 2

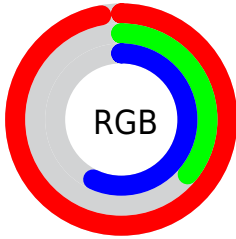
Format	Color
R _Y B	247, 91, 145
Decimal	16210833
CIE Lab	61.00, 63.88, 2.76
CIE LCh	61, 63.939, 2.475
Yxy	29.2481, 0.4435, 0.2752
Android (android.graphics.Color)	4294400913 (0xFFFF75B91)
YUV	143.8000, 0.5916, 90.5064
Hunter-Lab	54.0815, 60.9415, 5.0772

Details

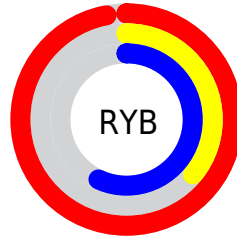
The CIELCh color **61, 63.939, 2.475** is a light color, and the websafe version is hex **FF6699**. The color can be described as light muted rose. A complement of this color would be **88, 55.225, 165.307**, and the grayscale version is **60, 0.008, 296.813**.

A 20% lighter version of the original color is **74, 47.226, 349.360**, and **41, 63.948, 2.431** is the 20% darker color. If you saturate the color by 10%, you get **57, 71.738, 5.528**, and if you desaturate by 10%, it is **66, 54.737, 0.069**.

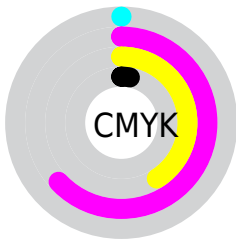
Distribution



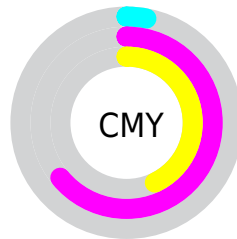
- Red (97%)
- Green (36%)
- Blue (57%)



- Red (97%)
- Yellow (36%)
- Blue (57%)



- Cyan (0%)
- Magenta (63%)
- Yellow (41%)
- Black (3%)



- Cyan (3%)
- Magenta (64%)
- Yellow (43%)

Brightness & Saturation Gradients

These gradients show how the CIELCh color 61, 63.939, 2.475 changes by changing the brightness by 10 percent. The first figure shows a shift by +10% for each color and the second figure -10%.

Similar to the brightness gradients but the following saturation gradients show a change of the CIELCh color 61, 63.939, 2.475 by changing the saturation by 10% instead.

 61, 63.939, 2.475

 61, 63.939, 2.475

 100, 63.939, 2.475

 51, 63.939, 2.475

 81, 63.939, 2.475

 41, 63.939, 2.475

 91, 63.939, 2.475

 31, 63.939, 2.475

 21, 63.939, 2.475

 11, 63.939, 2.475

 1, 63.939, 2.475

 0, 63.939, 2.475

 61, 63.939, 2.475

 61, 63.939, 2.475

 57, 71.738, 5.528

 66, 54.737, 0.069

55, 77.767, 9.404

71, 44.652,
358.138

53, 82.013, 14.233

76, 34.149,
356.555

52, 84.293, 17.943

82, 23.586,
355.224

89, 13.201,
354.074

95, 3.135, 352.957

99, 2.819, 199.461

Harmonies

Complementary

The Complementary color scheme is a pair of colors which are on the opposite of each other on the color wheel.



61, 63.939, 2.475



88, 55.225, 165.307

Rectangle

The Rectangle color scheme consists of four colors that form a rectangle on the color wheel.



61, 63.939, 2.475



61, 63.939, 52.475



61, 63.939, 182.475



61, 63.939, 232.475

Sweetspot

The Sweet Spot groups the original color and five complimentary colors.



61, 63.935, 2.477



87, 19.719, 354.729



57, 89.465, 316.655



45, 13.631, 355.067



0, 0.000, 0.000



53, 0.007, 296.813

Same Dimension

The Same Dimension uses a secret algorithm to generate beautiful new colors.



61, 63.935, 2.477



58, 75.541, 6.575



64, 61.725, 37.255



48, 5.613, 353.677



39, 67.911, 16.864



9, 29.616, 8.090

Inverse Universe

The Inverse Universe completely reimagines the original color for something new.



61, 63.935, 2.477



58, 75.541, 6.575



83, 36.679, 217.186



48, 5.613, 353.677



39, 67.911, 16.864



9, 29.616, 8.090

Previews

White Background



This preview shows how the CIELCh color 61, 63.939, 2.475 looks on a white background.

Color Contrast Check

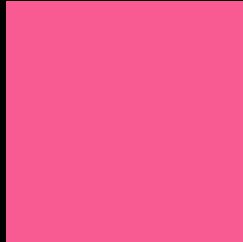
Large Text (above 18pt) WCAG AA ✓ Pass

Any Text WCAG AA ✗ Fail

Large Text (above 18pt) WCAG AAA ✗ Fail

Any Text WCAG AAA ✗ Fail

Black Background



This preview shows how the CIELCh color 61, 63.939, 2.475 looks on a black background.

Color Contrast Check

Large Text (above 18pt) WCAG AA ✓ Pass

Any Text WCAG AA ✓ Pass

Large Text (above 18pt) WCAG AAA ✓ Pass

Any Text WCAG AAA × Fail

If you want to check with other color combinations, try the [Color Contrast Checker](#).

CIELCh 61, 63.939, 2.475

Background



This preview shows how black text looks on a background with the CIELCh color 61, 63.939, 2.475.

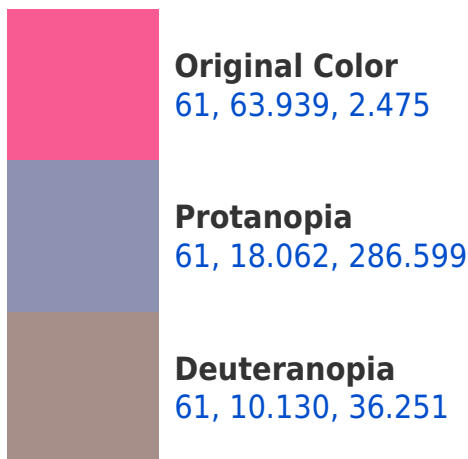


This preview shows how white text looks on a background with the CIELCh color 61, 63.939, 2.475.

Color Blindness Simulation

Color vision deficiency is a very complex topic, and I could not describe the different causes any better than Wikipedia does, so if you want to learn more, you should check out their [article about color blindness](#).

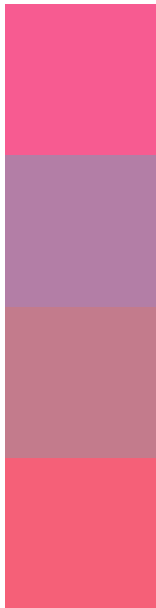
Dichromacy





Tritanopia
61, 61.696, 24.595

Trichromacy



Original Color
61, 63.939, 2.475

Protanomaly
59, 29.999, 334.138

Deuteranomaly
60, 30.384, 4.939

Tritanomaly
61, 61.302, 16.116

Monochromacy



Original Color
61, 63.939, 2.475

Achromatopsia
60, 0.008, 296.813

Achromatomaly
59, 24.601, 356.628

CSS Examples

Text

The CSS property to change the color of the text to CIELCh 61, 63.939, 2.475 is called "color". The color property can be set on classes, ids or directly on the HTML element.

This example shows how text in the color `rgb(247, 91, 145)` looks like.

```
.text, #text, p{  
    color:rgb(247, 91, 145)  
}
```

If you want to add a text shadow in that color use the text-shadow property, you can generate a text shadow directly with our [CSS Text Shadow Generator](#).

Here you see how black text with a 4 pixel rgb(247, 91, 145) colored shadow looks like.

```
.shadow{ text-shadow: 4px 4px 2px rgb(247, 91, 145) }
```

Border

The CSS property to change the border of an element to CIELCh 61, 63.939, 2.475 is called "border". The border property can be set on classes, ids or directly on the HTML element.

This example shows the color as border, it can be applied via the CSS property "border" or "border-color".

```
.border, #border, table{ border:4px solid rgb(247, 91, 145) }
```

If only the border color should be changed use the property `border-color`.

```
.border{ border-color:rgb(247, 91, 145) }
```

If you want to add a box shadow in that color use:

Here you see how a box with a 4 pixel `rgb(247, 91, 145)` colored shadow looks like.

```
.boxshadow{ -moz-box-shadow:4px 4px 4px  
4px rgb(247, 91, 145); -webkit-box-  
shadow:4px 4px 4px 4px rgb(247, 91, 145);  
box-shadow:4px 4px 4px 4px rgb(247, 91,  
145) }
```

Background

The CSS property to change the background color of an element to CIELCh 61, 63.939, 2.475 is called "background". The background property can be set on classes, ids or directly on the HTML element.

```
.background, #background, body{  
background: rgb(247, 91, 145) }
```

If only the background color should be changed can be used:

```
.background{ background-color: rgb(247, 91,  
145) }
```

This example shows the color as background, it is applied via the CSS property "background".

To optimize and compress your CSS code, you can use our [online CSS compressor and optimizer](#) based on csstidy. If you want to create a linear or radial gradient as background or border, check our [CSS Gradient Generator](#).

Hey! You found this booklet interesting? Support Converting Colors with the new Membership Option!

The pro membership hides all ads, plus gives you double the colors in the color bucket, and more awesome pro features!

[Learn more, Memberships starting at \\$2.50/m!](#)

**Follow me
on Twitter!**

@ConvertingColor