

Converting Colors

CIELCh(61, 66.434, 13.418)

Have a look what the booklet for
CIELCh(61, 66.434, 13.418) contains.

CIELCh(61, 66.434, 13.418)	3
<i>Conversions</i>	4
<i>Details</i>	6
<i>Harmonies</i>	11
<i>Previews</i>	20
<i>Color Blindness Simulation</i>	23
<i>CSS Examples</i>	26

Color

CIELCh(61, 66.434, 13.418)

Conversions

Conversions Part 1

Format	Color
Hex	FC587B
RGB	252, 88, 123
RGB Percent	99%, 35%, 48%
CMY	0.0102, 0.6534, 0.5164
CMYK	0.00, 0.65, 0.51, 0.01
HSL	347°, 97%, 67%
HSV	347°, 65%, 99%
XYZ	47.4039, 29.2481, 21.9905
YIQ	141.0260, 86.5090, 45.6530

Conversions

Conversions Part 2

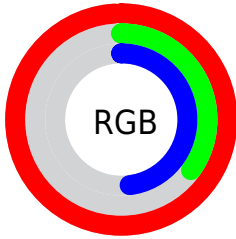
Format	Color
RYB	252, 88, 123
Decimal	16537723
CIELab	61.00, 64.62, 15.42
CIELCh	61, 66.434, 13.418
Yxy	29.2481, 0.4806, 0.2965
Android (android.graphics.Color)	4294727803 (0xFFFC587B)
YUV	141.0260, -8.8868, 97.3242
Hunter-Lab	54.0815, 61.8173, 13.7488

Details

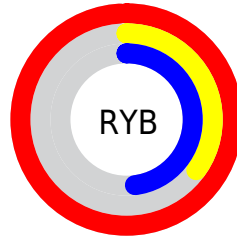
The CIELCh color **61, 66.434, 13.418** is a light color, and the websafe version is hex **FF6699**. The color can be described as light muted rose. A complement of this color would be **90, 50.623, 175.152**, and the grayscale version is **59, 0.008, 296.813**.

A 20% lighter version of the original color is **73, 44.332, 3.854**, and **41, 66.537, 13.300** is the 20% darker color. If you saturate the color by 10%, you get **57, 75.348, 17.078**, and if you desaturate by 10%, it is **66, 56.494, 10.533**.

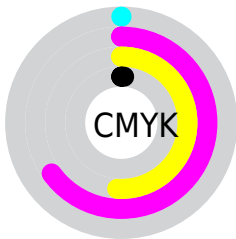
Distribution



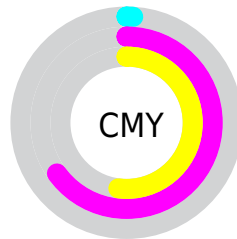
- Red (99%)
- Green (35%)
- Blue (48%)



- Red (99%)
- Yellow (35%)
- Blue (48%)



- Cyan (0%)
- Magenta (65%)
- Yellow (51%)
- Black (1%)



- Cyan (1%)
- Magenta (65%)
- Yellow (52%)

Brightness & Saturation Gradients

These gradients show how the CIELCh color 61, 66.434, 13.418 changes by changing the brightness by 10 percent. The first figure shows a shift by +10% for each color and the second figure -10%.

Similar to the brightness gradients but the following saturation gradients show a change of the CIELCh color 61, 66.434, 13.418 by changing the saturation by 10% instead.

61, 66.434, 13.418

61, 66.434, 13.418

100, 66.434,
13.418

51, 66.434, 13.418

81, 66.434, 13.418

41, 66.434, 13.418

91, 66.434, 13.418

31, 66.434, 13.418

21, 66.434, 13.418

11, 66.434, 13.418

1, 66.434, 13.418

0, 66.434, 13.418

61, 66.434, 13.418

61, 66.434, 13.418

57, 75.348, 17.078

66, 56.494, 10.533

■ 55, 82.982, 21.608

■ 71, 45.963, 8.255

■ 53, 89.380, 26.905

■ 77, 35.252, 6.435

■ 53, 92.341, 29.614

■ 83, 24.681, 4.953

■ 89, 14.455, 3.714

■ 96, 4.687, 2.595

■ 100, 0.905,
200.080

Harmonies

Complementary

The Complementary color scheme is a pair of colors which are on the opposite of each other on the color wheel.



61, 66.434, 13.418



90, 50.623, 175.152

Rectangle

The Rectangle color scheme consists of four colors that form a rectangle on the color wheel.



61, 66.434, 13.418



61, 66.434, 63.418



61, 66.434, 193.418



61, 66.434, 243.418

Sweetspot

The Sweet Spot groups the original color and five complimentary colors.



61, 66.430, 13.420



87, 18.668, 4.189



61, 93.705, 320.787



45, 12.935, 4.545



0, 0.000, 0.000



53, 0.007, 296.813

Same Dimension

The Same Dimension uses a secret algorithm to generate beautiful new colors.



61, 66.430, 13.420



57, 78.432, 18.371



69, 60.535, 47.435



49, 5.365, 3.102



39, 73.539, 28.549



9, 30.929, 17.130

Inverse Universe

The Inverse Universe completely reimagines the original color for something new.



61, 66.430, 13.420



57, 78.432, 18.371



78, 37.808, 239.429



49, 5.365, 3.102



39, 73.539, 28.549



9, 30.929, 17.130

Previews

White Background



This preview shows how the CIELCh color 61, 66.434, 13.418 looks on a white background.

Color Contrast Check

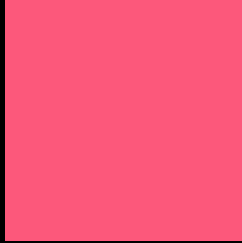
Large Text (above 18pt) WCAG AA ✓ Pass

Any Text WCAG AA × Fail

Large Text (above 18pt) WCAG AAA × Fail

Any Text WCAG AAA × Fail

Black Background



This preview shows how the CIELCh color 61, 66.434, 13.418 looks on a black background.

Color Contrast Check

Large Text (above 18pt) WCAG AA ✓ Pass

Any Text WCAG AA ✓ Pass

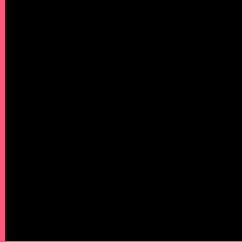
Large Text (above 18pt) WCAG AAA ✓ Pass

Any Text WCAG AAA × Fail

If you want to check with other color combinations, try the [Color Contrast Checker](#).

CIELCh 61, 66.434, 13.418

Background



This preview shows how black text looks on a background with the CIELCh color 61, 66.434, 13.418.

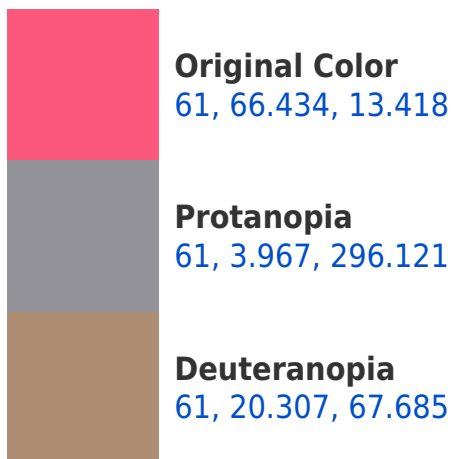


This preview shows how white text looks on a background with the CIELCh color 61, 66.434, 13.418.

Color Blindness Simulation

Color vision deficiency is a very complex topic, and I could not describe the different causes any better than Wikipedia does, so if you want to learn more, you should check out their [article about color blindness](#).

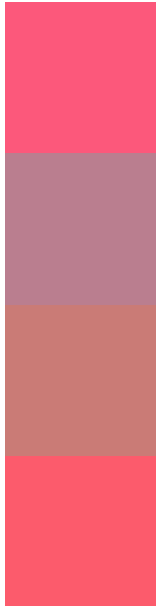
Dichromacy





Tritanopia
61, 67.315, 25.888

Trichromacy



Original Color
61, 66.434, 13.418

Protanomaly
59, 25.711, 0.748

Deuteranomaly
60, 34.076, 27.722

Tritanomaly
61, 66.866, 21.298

Monochromacy



Original Color
61, 66.434, 13.418

Achromatopsia
59, 0.008, 296.813

Achromatomaly
58, 25.368, 5.737

CSS Examples

Text

The CSS property to change the color of the text to CIELCh 61, 66.434, 13.418 is called "color". The color property can be set on classes, ids or directly on the HTML element.

This example shows how text in the color `rgb(252, 88, 123)` looks like.

```
.text, #text, p{  
    color:rgb(252, 88, 123)  
}
```

If you want to add a text shadow in that color use the text-shadow property, you can generate a text shadow directly with our [CSS Text Shadow Generator](#).

Here you see how black text with a 4 pixel rgb(252, 88, 123) colored shadow looks like.

```
.shadow{ text-shadow: 4px 4px 2px rgb(252, 88, 123) }
```

Border

The CSS property to change the border of an element to CIELCh 61, 66.434, 13.418 is called "border". The border property can be set on classes, ids or directly on the HTML element.

This example shows the color as border, it can be applied via the CSS property "border" or "border-color".

```
.border, #border, table{ border:4px solid rgb(252, 88, 123) }
```

If only the border color should be changed use the property border-color.

```
.border{ border-color:rgb(252, 88, 123) }
```

If you want to add a box shadow in that color use:

Here you see how a box with a 4 pixel rgb(252, 88, 123) colored shadow looks like.

```
.boxshadow{ -moz-box-shadow:4px 4px 4px  
4px rgb(252, 88, 123); -webkit-box-  
shadow:4px 4px 4px 4px rgb(252, 88, 123);  
box-shadow:4px 4px 4px 4px rgb(252, 88,  
123) }
```

Background

The CSS property to change the background color of an element to CIELCh 61, 66.434, 13.418 is called "background". The background property can be set on classes, ids or directly on the HTML element.

```
.background, #background, body{  
background: rgb(252, 88, 123) }
```

If only the background color should be changed can be used:

```
.background{ background-color: rgb(252, 88,  
123) }
```

This example shows the color as background, it is applied via the CSS property "background".

To optimize and compress your CSS code, you can use our [online CSS compressor and optimizer](#) based on csstidy. If you want to create a linear or radial gradient as background or border, check our [CSS Gradient Generator](#).

Hey! You found this booklet interesting? Support Converting Colors with the new Membership Option!

The pro membership hides all ads, plus gives you double the colors in the color bucket, and more awesome pro features!

[Learn more, Memberships starting at \\$2.50/m!](#)

**Follow me
on Twitter!**

@ConvertingColor