

Converting Colors

CIELCh(61, 67.702, 17.877)

Have a look what the booklet for
CIELCh(61, 67.702, 17.877) contains.

CIELCh(61, 67.840, 17.930)	3
<i>Conversions</i>	4
<i>Details</i>	6
<i>Harmonies</i>	11
<i>Previews</i>	20
<i>Color Blindness Simulation</i>	23
<i>CSS Examples</i>	26

Color

CIELCh(61, 67.840, 17.930)

Conversions

Conversions Part 1

Format	Color
Hex	FE5872
RGB	254, 88, 114
RGB Percent	100%, 35%, 45%
CMY	0.0041, 0.6550, 0.5531
CMYK	0.00, 0.65, 0.55, 0.00
HSL	351°, 99%, 67%
HSV	351°, 65%, 100%
XYZ	47.3769, 29.2481, 19.0570
YIQ	140.5980, 90.5900, 43.2780

Conversions

Conversions Part 2

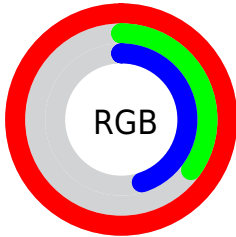
Format	Color
RYB	254, 88, 114
Decimal	16668786
CIELab	61.00, 64.55, 20.88
CIELCh	61, 67.840, 17.930
Yxy	29.2481, 0.4951, 0.3057
Android (android.graphics.Color)	4294858866 (0xFFFE5872)
YUV	140.5980, -13.1128, 99.4536
Hunter-Lab	54.0815, 61.7281, 16.9647

Details

The CIELCh color **61, 67.840, 17.930** is a light color, and the websafe version is hex **FF6666**. The color can be described as light muted rose. A complement of this color would be **91, 48.596, 180.174**, and the grayscale version is **58, 0.007, 296.813**.

A 20% lighter version of the original color is **73, 43.815, 10.051**, and **41, 67.845, 18.099** is the 20% darker color. If you saturate the color by 10%, you get **57, 77.467, 21.680**, and if you desaturate by 10%, it is **66, 57.379, 14.957**.

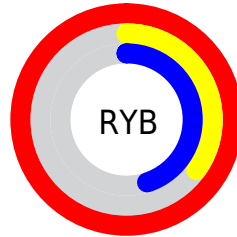
Distribution



Red (100%)

Green (35%)

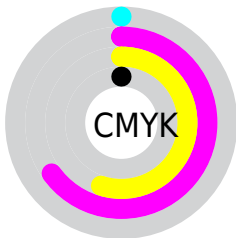
Blue (45%)



Red (100%)

Yellow (35%)

Blue (45%)

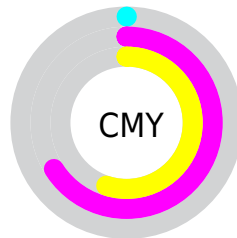


Cyan (0%)

Magenta (65%)

Yellow (55%)

Black (0%)



Cyan (0%)

Magenta (66%)

Yellow (55%)

Brightness & Saturation Gradients

These gradients show how the CIELCh color 61, 67.840, 17.930 changes by changing the brightness by 10 percent. The first figure shows a shift by +10% for each color and the second figure -10%.

Similar to the brightness gradients but the following saturation gradients show a change of the CIELCh color 61, 67.840, 17.930 by changing the saturation by 10% instead.

61, 67.840, 17.930

61, 67.840, 17.930

100, 67.840,
17.930

51, 67.840, 17.930

81, 67.840, 17.930

41, 67.840, 17.930

91, 67.840, 17.930

31, 67.840, 17.930

21, 67.840, 17.930

11, 67.840, 17.930

1, 67.840, 17.930

0, 67.840, 17.930

61, 67.840, 17.930

61, 67.840, 17.930

57, 77.467, 21.680

66, 57.379, 14.957

■ 55, 85.998, 26.227

■ 71, 46.493, 12.618

■ 54, 93.324, 31.314

■ 77, 35.569, 10.766

■ 53, 96.390, 33.573

■ 83, 24.900, 9.278

■ 89, 14.671, 8.052

■ 96, 4.973, 6.964

100, 0.364,
201.203

Harmonies

Complementary

The Complementary color scheme is a pair of colors which are on the opposite of each other on the color wheel.



61, 67.840, 17.930



91, 48.596, 180.174

Rectangle

The Rectangle color scheme consists of four colors that form a rectangle on the color wheel.



61, 67.840, 17.930



61, 67.840, 67.930



61, 67.840, 197.930



61, 67.840, 247.930

Sweetspot

The Sweet Spot groups the original color and five complimentary colors.



61, 67.836, 17.932



87, 19.419, 8.594



62, 94.839, 322.362



44, 13.351, 8.945



0, 0.000, 0.000



53, 0.007, 296.813

Same Dimension

The Same Dimension uses a secret algorithm to generate beautiful new colors.



61, 67.836, 17.932



57, 80.096, 22.813



71, 60.064, 51.672



50, 5.356, 7.415



40, 77.138, 32.649



10, 32.240, 20.737

Inverse Universe

The Inverse Universe completely reimagines the original color for something new.



61, 67.836, 17.932



57, 80.096, 22.813



76, 39.473, 247.631



50, 5.356, 7.415



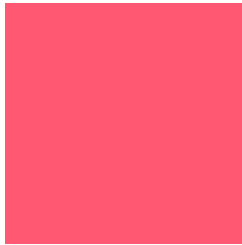
40, 77.138, 32.649



10, 32.240, 20.737

Previews

White Background



This preview shows how the CIELCh color 61, 67.840, 17.930 looks on a white background.

Color Contrast Check

Large Text (above 18pt) WCAG AA ✓ Pass

Any Text WCAG AA ✗ Fail

Large Text (above 18pt) WCAG AAA ✗ Fail

Any Text WCAG AAA ✗ Fail

Black Background



This preview shows how the CIELCh color 61, 67.840, 17.930 looks on a black background.

Color Contrast Check

Large Text (above 18pt) WCAG AA ✓ Pass

Any Text WCAG AA ✓ Pass

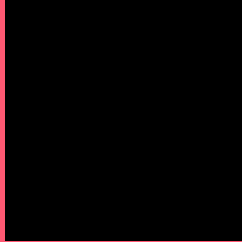
Large Text (above 18pt) WCAG AAA ✓ Pass

Any Text WCAG AAA × Fail

If you want to check with other color combinations, try the [Color Contrast Checker](#).

CIELCh 61, 67.840, 17.930

Background



This preview shows how black text looks on a background with the CIELCh color 61, 67.840, 17.930.

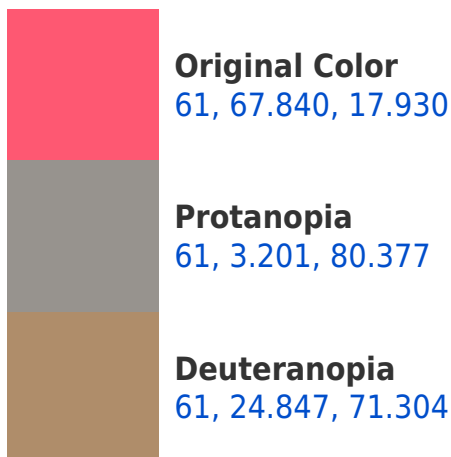


This preview shows how white text looks on a background with the CIELCh color 61, 67.840, 17.930.

Color Blindness Simulation

Color vision deficiency is a very complex topic, and I could not describe the different causes any better than Wikipedia does, so if you want to learn more, you should check out their [article about color blindness](#).

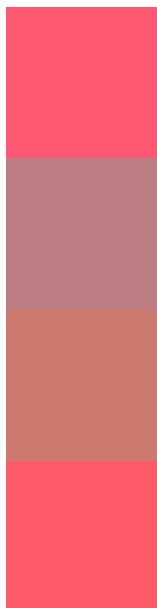
Dichromacy





Tritanopia
61, 69.041, 26.294

Trichromacy



Original Color
61, 67.840, 17.930

Protanomaly
59, 25.740, 14.878

Deuteranomaly
60, 36.946, 34.294

Tritanomaly
61, 68.285, 23.376

Monochromacy



Original Color
61, 67.840, 17.930

Achromatopsia
59, 0.008, 296.813

Achromatomaly
58, 25.108, 10.783

CSS Examples

Text

The CSS property to change the color of the text to CIELCh 61, 67.840, 17.930 is called "color". The color property can be set on classes, ids or directly on the HTML element.

This example shows how text in the color `rgb(254, 88, 114)` looks like.

```
.text, #text, p{  
    color:rgb(254, 88, 114)  
}
```

If you want to add a text shadow in that color use the text-shadow property, you can generate a text shadow directly with our [CSS Text Shadow Generator](#).

Here you see how black text with a 4 pixel rgb(254, 88, 114) colored shadow looks like.

```
.shadow{ text-shadow: 4px 4px 2px rgb(254, 88, 114) }
```

Border

The CSS property to change the border of an element to CIELCh 61, 67.840, 17.930 is called "border". The border property can be set on classes, ids or directly on the HTML element.

This example shows the color as border, it can be applied via the CSS property "border" or "border-color".

```
.border, #border, table{ border:4px solid rgb(254, 88, 114) }
```

If only the border color should be changed use the property `border-color`.

```
.border{ border-color:rgb(254, 88, 114) }
```

If you want to add a box shadow in that color use:

Here you see how a box with a 4 pixel `rgb(254, 88, 114)` colored shadow looks like.

```
.boxshadow{ -moz-box-shadow:4px 4px 4px  
4px rgb(254, 88, 114); -webkit-box-  
shadow:4px 4px 4px 4px rgb(254, 88, 114);  
box-shadow:4px 4px 4px 4px rgb(254, 88,  
114) }
```

Background

The CSS property to change the background color of an element to CIELCh 61, 67.840, 17.930 is called "background". The background property can be set on classes, ids or directly on the HTML element.

```
.background, #background, body{  
background: rgb(254, 88, 114) }
```

If only the background color should be changed can be used:

```
.background{ background-color: rgb(254, 88,  
114) }
```

This example shows the color as background, it is applied via the CSS property "background".

To optimize and compress your CSS code, you can use our [online CSS compressor and optimizer](#) based on csstidy. If you want to create a linear or radial gradient as background or border, check our [CSS Gradient Generator](#).

Hey! You found this booklet interesting? Support Converting Colors with the new Membership Option!

The pro membership hides all ads, plus gives you double the colors in the color bucket, and more awesome pro features!

[Learn more, Memberships starting at \\$2.50/m!](#)

**Follow me
on Twitter!**

@ConvertingColor