

Converting Colors

CIELCh(61, 67.939, 14.535)

Have a look what the booklet for
CIELCh(61, 67.939, 14.535) contains.

CIELCh(61, 67.915, 14.177)	3
<i>Conversions</i>	4
<i>Details</i>	6
<i>Harmonies</i>	11
<i>Previews</i>	20
<i>Color Blindness Simulation</i>	23
<i>CSS Examples</i>	26

Color

CIELCh(61, 67.915, 14.177)

Conversions

Conversions Part 1

Format	Color
Hex	FE5679
RGB	254, 86, 121
RGB Percent	100%, 34%, 47%
CMY	0.0024, 0.6613, 0.5243
CMYK	0.00, 0.66, 0.52, 0.00
HSL	348°, 99%, 67%
HSV	348°, 66%, 100%
XYZ	47.8450, 29.2481, 21.3131
YIQ	140.2220, 88.8930, 46.5010

Conversions

Conversions Part 2

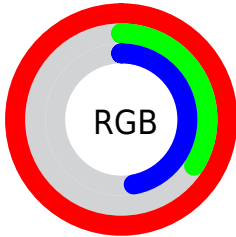
Format	Color
R _Y B	254, 86, 121
Decimal	16668281
CIE Lab	61.00, 65.85, 16.63
CIE LCh	61, 67.915, 14.177
Yxy	29.2481, 0.4862, 0.2972
Android (android.graphics.Color)	4294858361 (0xFFFE5679)
YUV	140.2220, -9.4764, 99.7833
Hunter-Lab	54.0815, 63.2731, 14.4913

Details

The CIELCh color **61, 67.915, 14.177** is a light color, and the websafe version is hex **FF3366**. The color can be described as light muted rose. A complement of this color would be **91, 51.260, 175.437**, and the grayscale version is **58, 0.007, 296.813**.

A 20% lighter version of the original color is **72, 45.125, 4.357**, and **41, 67.810, 14.003** is the 20% darker color. If you saturate the color by 10%, you get **57, 76.816, 17.940**, and if you desaturate by 10%, it is **65, 57.960, 11.206**.

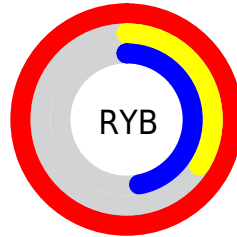
Distribution



Red (100%)

Green (34%)

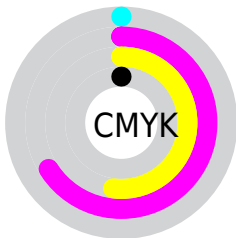
Blue (47%)



Red (100%)

Yellow (34%)

Blue (47%)

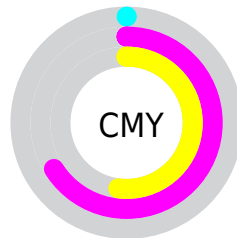


Cyan (0%)

Magenta (66%)

Yellow (52%)

Black (0%)



Cyan (0%)

Magenta (66%)

Yellow (52%)


Brightness & Saturation Gradients

These gradients show how the CIELCh color 61, 67.915, 14.177 changes by changing the brightness by 10 percent. The first figure shows a shift by +10% for each color and the second figure -10%.

Similar to the brightness gradients but the following saturation gradients show a change of the CIELCh color 61, 67.915, 14.177 by changing the saturation by 10% instead.

 61, 67.915, 14.177

 61, 67.915, 14.177

 100, 67.915,
14.177

 51, 67.915, 14.177

 81, 67.915, 14.177


 41, 67.915, 14.177

 91, 67.915, 14.177

 31, 67.915, 14.177

 21, 67.915, 14.177

 11, 67.915, 14.177

 1, 67.915, 14.177

 0, 67.915, 14.177

 61, 67.915, 14.177

 61, 67.915, 14.177

 57, 76.816, 17.940

 65, 57.960, 11.206

■ 55, 84.438, 22.570

■ 71, 47.378, 8.863

■ 54, 90.847, 27.918

■ 76, 36.588, 6.996

■ 53, 93.233, 30.024

■ 83, 25.921, 5.481

■ 89, 15.594, 4.220

■ 96, 5.725, 3.104

100, 0.210,
202.543

Harmonies

Complementary

The Complementary color scheme is a pair of colors which are on the opposite of each other on the color wheel.



61, 67.915, 14.177



91, 51.260, 175.437

Rectangle

The Rectangle color scheme consists of four colors that form a rectangle on the color wheel.



61, 67.915, 14.177



61, 67.915, 64.177



61, 67.915, 194.177



61, 67.915, 244.177

Sweetspot

The Sweet Spot groups the original color and five complimentary colors.



61, 67.911, 14.179



87, 19.667, 4.694



61, 95.519, 320.802



44, 13.508, 5.050



0, 0.000, 0.000



53, 0.007, 296.813

Same Dimension

The Same Dimension uses a secret algorithm to generate beautiful new colors.



61, 67.911, 14.179



57, 79.357, 19.223



69, 62.139, 47.443



50, 5.444, 3.487



40, 74.559, 28.998



10, 31.938, 18.332

Inverse Universe

The Inverse Universe completely reimagines the original color for something new.



61, 67.911, 14.179



57, 79.357, 19.223



78, 38.450, 239.758



50, 5.444, 3.487



40, 74.559, 28.998



10, 31.938, 18.332

Previews

White Background



This preview shows how the CIELCh color 61, 67.915, 14.177 looks on a white background.

Color Contrast Check

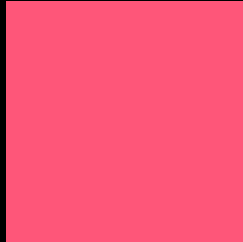
Large Text (above 18pt) WCAG AA ✓ Pass

Any Text WCAG AA ✗ Fail

Large Text (above 18pt) WCAG AAA ✗ Fail

Any Text WCAG AAA ✗ Fail

Black Background



This preview shows how the CIELCh color 61, 67.915, 14.177 looks on a black background.

Color Contrast Check

Large Text (above 18pt) WCAG AA ✓ Pass

Any Text WCAG AA ✓ Pass

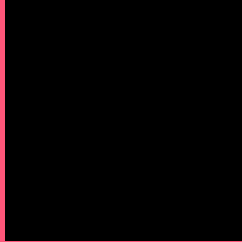
Large Text (above 18pt) WCAG AAA ✓ Pass

Any Text WCAG AAA × Fail

If you want to check with other color combinations, try the [Color Contrast Checker](#).

CIELCh 61, 67.915, 14.177

Background



This preview shows how black text looks on a background with the CIELCh color 61, 67.915, 14.177.



This preview shows how white text looks on a background with the CIELCh color 61, 67.915, 14.177.

Color Blindness Simulation

Color vision deficiency is a very complex topic, and I could not describe the different causes any better than Wikipedia does, so if you want to learn more, you should check out their [article about color blindness](#).

Dichromacy



Original Color

61, 67.915, 14.177

Protanopia

61, 2.931, 305.634

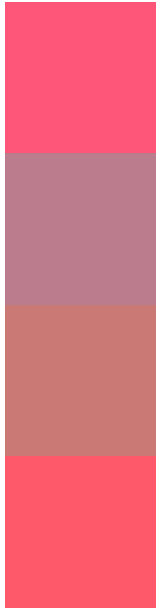
Deuteranopia

61, 21.080, 67.673



Tritanopia
61, 69.041, 26.294

Trichromacy



Original Color
61, 67.915, 14.177

Protanomaly
59, 26.367, 2.713

Deuteranomaly
60, 35.485, 27.741

Tritanomaly
61, 68.512, 21.846

Monochromacy



Original Color
61, 67.915, 14.177

Achromatopsia
59, 0.008, 296.813

Achromatomaly
57, 25.797, 6.086

CSS Examples

Text

The CSS property to change the color of the text to CIELCh 61, 67.915, 14.177 is called "color". The color property can be set on classes, ids or directly on the HTML element.

This example shows how text in the color `rgb(254, 86, 121)` looks like.

```
.text, #text, p{  
    color:rgb(254, 86, 121)  
}
```

If you want to add a text shadow in that color use the text-shadow property, you can generate a text shadow directly with our [CSS Text Shadow Generator](#).

Here you see how black text with a 4 pixel rgb(254, 86, 121) colored shadow looks like.

```
.shadow{ text-shadow: 4px 4px 2px rgb(254, 86, 121) }
```

Border

The CSS property to change the border of an element to CIELCh 61, 67.915, 14.177 is called "border". The border property can be set on classes, ids or directly on the HTML element.

This example shows the color as border, it can be applied via the CSS property "border" or "border-color".

```
.border, #border, table{ border:4px solid rgb(254, 86, 121) }
```

If only the border color should be changed use the property `border-color`.

```
.border{ border-color:rgb(254, 86, 121) }
```

If you want to add a box shadow in that color use:

Here you see how a box with a 4 pixel `rgb(254, 86, 121)` colored shadow looks like.

```
.boxshadow{ -moz-box-shadow:4px 4px 4px  
4px rgb(254, 86, 121); -webkit-box-  
shadow:4px 4px 4px 4px rgb(254, 86, 121);  
box-shadow:4px 4px 4px 4px rgb(254, 86,  
121) }
```

Background

The CSS property to change the background color of an element to CIELCh 61, 67.915, 14.177 is called "background". The background property can be set on classes, ids or directly on the HTML element.

```
.background, #background, body{  
background: rgb(254, 86, 121) }
```

If only the background color should be changed can be used:

```
.background{ background-color: rgb(254, 86,  
121) }
```

This example shows the color as background, it is applied via the CSS property "background".

To optimize and compress your CSS code, you can use our [online CSS compressor and optimizer](#) based on csstidy. If you want to create a linear or radial gradient as background or border, check our [CSS Gradient Generator](#).

Hey! You found this booklet interesting? Support Converting Colors with the new Membership Option!

The pro membership hides all ads, plus gives you double the colors in the color bucket, and more awesome pro features!

[Learn more, Memberships starting at \\$2.50/m!](#)

**Follow me
on Twitter!**

@ConvertingColor