

Converting Colors

CIELCh(61, 68.573, 7.096)

Have a look what the booklet for
CIELCh(61, 68.573, 7.096) contains.

CIELCh(61, 68.614, 7.375)	3
<i>Conversions</i>	4
<i>Details</i>	6
<i>Harmonies</i>	11
<i>Previews</i>	20
<i>Color Blindness Simulation</i>	23
<i>CSS Examples</i>	26

Color

CIELCh(61, 68.614, 7.375)

Conversions

Conversions Part 1

Format	Color
Hex	FF5487
RGB	255, 84, 135
RGB Percent	100%, 33%, 53%
CMY	0.0011, 0.6716, 0.4715
CMYK	0.00, 0.67, 0.47, 0.00
HSL	342°, 100%, 66%
HSV	342°, 67%, 100%
XYZ	48.6432, 29.2481, 25.9192
YIQ	140.9430, 85.5450, 52.1130

Conversions

Conversions Part 2

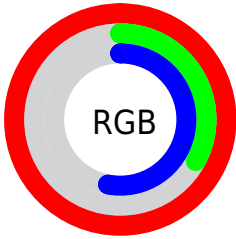
Format	Color
R _Y B	255, 84, 135
Decimal	16733319
CIE Lab	61.00, 68.05, 8.81
CIE LCh	61, 68.614, 7.375
Yxy	29.2481, 0.4686, 0.2817
Android (android.graphics.Color)	4294923399 (0xFFFF5487)
YUV	140.9430, -2.9299, 100.0280
Hunter-Lab	54.0815, 65.9078, 9.4417

Details

The CIELCh color **61, 68.614, 7.375** is a light color, and the websafe version is hex **FF6699**. The color can be described as light muted rose. A complement of this color would be **91, 56.553, 168.003**, and the grayscale version is **58, 0.007, 296.813**.

A 20% lighter version of the original color is **73, 47.640, 354.463**, and **41, 68.468, 7.400** is the 20% darker color. If you saturate the color by 10%, you get **58, 76.344, 10.968**, and if you desaturate by 10%, it is **65, 59.435, 4.552**.

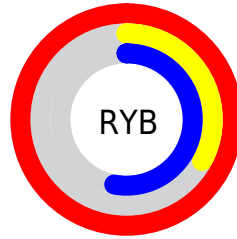
Distribution



Red (100%)

Green (33%)

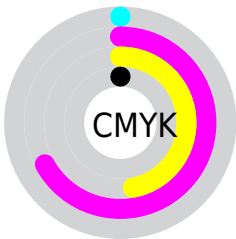
Blue (53%)



Red (100%)

Yellow (33%)

Blue (53%)

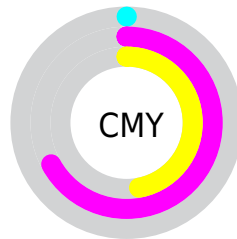


Cyan (0%)

Magenta (67%)

Yellow (47%)

Black (0%)



Cyan (0%)

Magenta (67%)

Yellow (47%)

Brightness & Saturation Gradients

These gradients show how the CIELCh color 61, 68.614, 7.375 changes by changing the brightness by 10 percent. The first figure shows a shift by +10% for each color and the second figure -10%.

Similar to the brightness gradients but the following saturation gradients show a change of the CIELCh color 61, 68.614, 7.375 by changing the saturation by 10% instead.

 61, 68.614, 7.375

 61, 68.614, 7.375

 100, 68.614, 7.375

 51, 68.614, 7.375

 81, 68.614, 7.375

 41, 68.614, 7.375

 91, 68.614, 7.375

 31, 68.614, 7.375

 21, 68.614, 7.375

 11, 68.614, 7.375

 1, 68.614, 7.375

 0, 68.614, 7.375

 61, 68.614, 7.375

 61, 68.614, 7.375

 58, 76.344, 10.968

 65, 59.435, 4.552

■ 55, 82.404, 15.474

■ 70, 49.281, 2.315

■ 54, 87.015, 20.886

■ 76, 38.631, 0.513

■ 54, 88.287, 22.487

■ 82, 27.881,
359.028

■ 89, 17.300,
357.773

■ 95, 7.054, 356.660

100, 0.097,
206.240

Harmonies

Complementary

The Complementary color scheme is a pair of colors which are on the opposite of each other on the color wheel.



61, 68.614, 7.375



91, 56.553, 168.003

Rectangle

The Rectangle color scheme consists of four colors that form a rectangle on the color wheel.



61, 68.614, 7.375



61, 68.614, 57.375



61, 68.614, 187.375



61, 68.614, 237.375

Sweetspot

The Sweet Spot groups the original color and five complimentary colors.



61, 68.610, 7.377



87, 20.331, 358.115



58, 96.662, 318.235



44, 13.940, 358.463



0, 0.000, 0.000



53, 0.007, 296.813

Same Dimension

The Same Dimension uses a secret algorithm to generate beautiful new colors.



61, 68.610, 7.377



57, 78.959, 12.602



66, 66.182, 41.173



50, 5.662, 356.920



40, 70.736, 21.400



10, 31.467, 12.856

Inverse Universe

The Inverse Universe completely reimagines the original color for something new.



61, 68.610, 7.377



57, 78.959, 12.602



82, 38.224, 226.004



50, 5.662, 356.920



40, 70.736, 21.400



10, 31.467, 12.856

Previews

White Background



This preview shows how the CIELCh color 61, 68.614, 7.375 looks on a white background.

Color Contrast Check

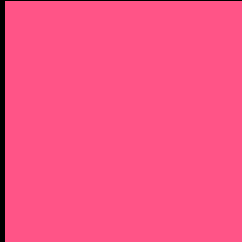
Large Text (above 18pt) WCAG AA ✓ Pass

Any Text WCAG AA ✗ Fail

Large Text (above 18pt) WCAG AAA ✗ Fail

Any Text WCAG AAA ✗ Fail

Black Background



This preview shows how the CIELCh color 61, 68.614, 7.375 looks on a black background.

Color Contrast Check

Large Text (above 18pt) WCAG AA ✓ Pass

Any Text WCAG AA ✓ Pass

Large Text (above 18pt) WCAG AAA ✓ Pass

Any Text WCAG AAA × Fail

If you want to check with other color combinations, try the [Color Contrast Checker](#).

CIELCh 61, 68.614, 7.375

Background



This preview shows how black text looks on a background with the CIELCh color 61, 68.614, 7.375.

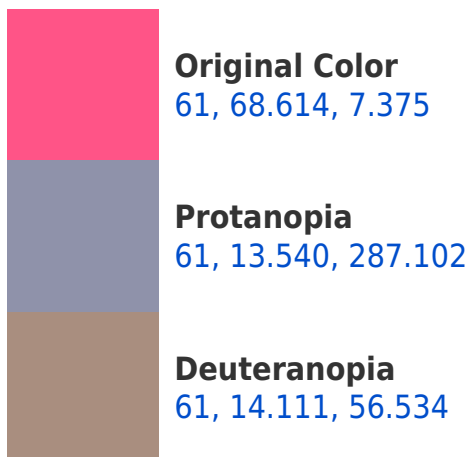


This preview shows how white text looks on a background with the CIELCh color 61, 68.614, 7.375.

Color Blindness Simulation

Color vision deficiency is a very complex topic, and I could not describe the different causes any better than Wikipedia does, so if you want to learn more, you should check out their [article about color blindness](#).

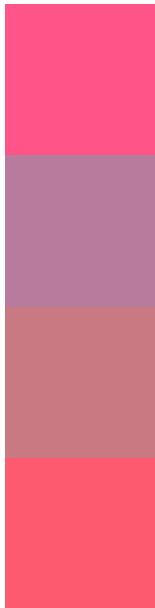
Dichromacy





Tritanopia
61, 68.366, 26.527

Trichromacy



Original Color
61, 68.614, 7.375

Protanomaly
59, 30.094, 343.581

Deuteranomaly
59, 32.971, 14.638

Tritanomaly
61, 67.483, 19.463

Monochromacy



Original Color
61, 68.614, 7.375

Achromatopsia
59, 0.008, 296.813

Achromatomaly
57, 26.949, 359.358

CSS Examples

Text

The CSS property to change the color of the text to CIELCh 61, 68.614, 7.375 is called "color". The color property can be set on classes, ids or directly on the HTML element.

This example shows how text in the color `rgb(255, 84, 135)` looks like.

```
.text, #text, p{  
    color:rgb(255, 84, 135)  
}
```

If you want to add a text shadow in that color use the text-shadow property, you can generate a text shadow directly with our [CSS Text Shadow Generator](#).

Here you see how black text with a 4 pixel rgb(255, 84, 135) colored shadow looks like.

```
.shadow{ text-shadow: 4px 4px 2px rgb(255, 84, 135) }
```

Border

The CSS property to change the border of an element to CIELCh 61, 68.614, 7.375 is called "border". The border property can be set on classes, ids or directly on the HTML element.

This example shows the color as border, it can be applied via the CSS property "border" or "border-color".

```
.border, #border, table{ border:4px solid rgb(255, 84, 135) }
```

If only the border color should be changed use the property `border-color`.

```
.border{ border-color:rgb(255, 84, 135) }
```

If you want to add a box shadow in that color use:

Here you see how a box with a 4 pixel `rgb(255, 84, 135)` colored shadow looks like.

```
.boxshadow{ -moz-box-shadow:4px 4px 4px 4px rgb(255, 84, 135); -webkit-box-shadow:4px 4px 4px 4px rgb(255, 84, 135); box-shadow:4px 4px 4px 4px rgb(255, 84, 135) }
```

Background

The CSS property to change the background color of an element to CIELCh 61, 68.614, 7.375 is called "background". The background property can be set on classes, ids or directly on the HTML element.

```
.background, #background, body{  
background: rgb(255, 84, 135) }
```

If only the background color should be changed can be used:

```
.background{ background-color: rgb(255, 84,  
135) }
```

This example shows the color as background, it is applied via the CSS property "background".

To optimize and compress your CSS code, you can use our [online CSS compressor and optimizer](#) based on csstidy. If you want to create a linear or radial gradient as background or border, check our [CSS Gradient Generator](#).

Hey! You found this booklet interesting? Support Converting Colors with the new Membership Option!

The pro membership hides all ads, plus gives you double the colors in the color bucket, and more awesome pro features!

[Learn more, Memberships starting at \\$2.50/m!](#)

**Follow me
on Twitter!**

@ConvertingColor