

Converting Colors

CIELCh(61, 69.002, 10.360)

Have a look what the booklet for
CIELCh(61, 69.002, 10.360) contains.

CIELCh(61, 68.615, 10.156)	3
<i>Conversions</i>	4
<i>Details</i>	6
<i>Harmonies</i>	11
<i>Previews</i>	20
<i>Color Blindness Simulation</i>	23
<i>CSS Examples</i>	26

Color

CIELCh(61, 68.615, 10.156)

Conversions

Conversions Part 1

Format	Color
Hex	FF5481
RGB	255, 84, 129
RGB Percent	100%, 33%, 51%
CMY	0.0000, 0.6699, 0.4936
CMYK	0.00, 0.67, 0.49, 0.00
HSL	344°, 100%, 67%
HSV	344°, 67%, 100%
XYZ	48.4587, 29.2481, 23.9088
YIQ	140.2590, 87.4710, 50.2470

Conversions

Conversions Part 2

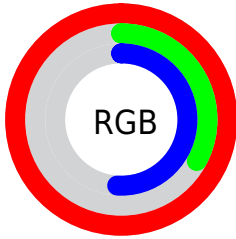
Format	Color
R_{YB}	255, 84, 129
Decimal	16733313
CIE _{Lab}	61.00, 67.54, 12.10
CIE _{LCh}	61, 68.615, 10.156
Yxy	29.2481, 0.4769, 0.2878
Android (android.graphics.Color)	4294923393 (0xFFFF5481)
YUV	140.2590, -5.5507, 100.6279
Hunter-Lab	54.0815, 65.2986, 11.6457

Details

The CIELCh color **61, 68.615, 10.156** is a light color, and the websafe version is hex **FF6699**. The color can be described as light muted rose. A complement of this color would be **91, 54.622, 170.716**, and the grayscale version is **58, 0.007, 296.813**.

A 20% lighter version of the original color is **72, 46.655, 358.140**, and **41, 68.639, 10.432** is the 20% darker color. If you saturate the color by 10%, you get **58, 76.690, 13.838**, and if you desaturate by 10%, it is **65, 59.117, 7.206**.

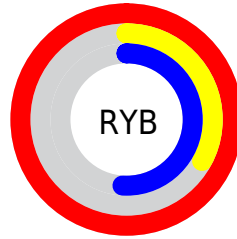
Distribution



Red (100%)

Green (33%)

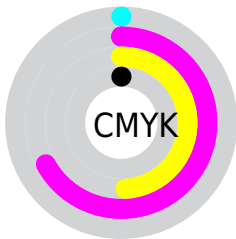
Blue (51%)



Red (100%)

Yellow (33%)

Blue (51%)

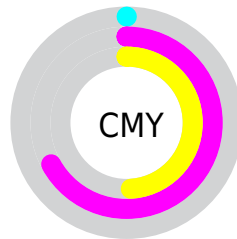


Cyan (0%)

Magenta (67%)

Yellow (49%)

Black (0%)



Cyan (0%)

Magenta (67%)

Yellow (49%)


Brightness & Saturation Gradients

These gradients show how the CIELCh color 61, 68.615, 10.156 changes by changing the brightness by 10 percent. The first figure shows a shift by +10% for each color and the second figure -10%.

Similar to the brightness gradients but the following saturation gradients show a change of the CIELCh color 61, 68.615, 10.156 by changing the saturation by 10% instead.

 61, 68.615, 10.156

 61, 68.615, 10.156

 100, 68.615,
10.156

 51, 68.615, 10.156

 81, 68.615, 10.156

 41, 68.615, 10.156

 91, 68.615, 10.156

 31, 68.615, 10.156

 21, 68.615, 10.156

 11, 68.615, 10.156

 1, 68.615, 10.156

 0, 68.615, 10.156

 61, 68.615, 10.156

 61, 68.615, 10.156

 58, 76.690, 13.838

 65, 59.117, 7.206

■ 55, 83.308, 18.458

■ 70, 48.820, 4.898

■ 54, 88.605, 23.920

■ 76, 38.125, 3.047

■ 54, 90.146, 25.589

■ 82, 27.405, 1.532

■ 89, 16.916, 0.260

■ 95, 6.806, 359.137

100, 0.012,
296.813

Harmonies

Complementary

The Complementary color scheme is a pair of colors which are on the opposite of each other on the color wheel.



61, 68.615, 10.156



91, 54.622, 170.716

Rectangle

The Rectangle color scheme consists of four colors that form a rectangle on the color wheel.



61, 68.615, 10.156



61, 68.615, 60.156



61, 68.615, 190.156



61, 68.615, 240.156

Sweetspot

The Sweet Spot groups the original color and five complimentary colors.



61, 68.554, 10.129



87, 20.040, 0.622



59, 96.641, 319.258



44, 13.749, 0.976



0, 0.000, 0.000



53, 0.007, 296.813

Same Dimension

The Same Dimension uses a secret algorithm to generate beautiful new colors.



61, 68.554, 10.129



57, 78.843, 15.130



67, 64.904, 43.573



50, 5.568, 359.415



40, 72.070, 24.504



10, 31.631, 15.183

Inverse Universe

The Inverse Universe completely reimagines the original color for something new.



61, 68.554, 10.129



57, 78.843, 15.130



81, 38.220, 231.612



50, 5.568, 359.415



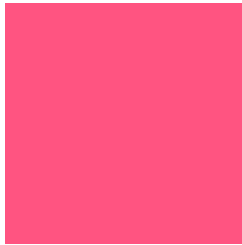
40, 72.070, 24.504



10, 31.631, 15.183

Previews

White Background



This preview shows how the CIELCh color 61, 68.615, 10.156 looks on a white background.

Color Contrast Check

Large Text (above 18pt) WCAG AA ✓ Pass

Any Text WCAG AA ✗ Fail

Large Text (above 18pt) WCAG AAA ✗ Fail

Any Text WCAG AAA ✗ Fail

Black Background



This preview shows how the CIELCh color 61, 68.615, 10.156 looks on a black background.

Color Contrast Check

Large Text (above 18pt) WCAG AA ✓ Pass

Any Text WCAG AA ✓ Pass

Large Text (above 18pt) WCAG AAA ✓ Pass

Any Text WCAG AAA × Fail

If you want to check with other color combinations, try the [Color Contrast Checker](#).

CIELCh 61, 68.615, 10.156

Background



This preview shows how black text looks on a background with the CIELCh color 61, 68.615, 10.156.



This preview shows how white text looks on a background with the CIELCh color 61, 68.615, 10.156.

Color Blindness Simulation

Color vision deficiency is a very complex topic, and I could not describe the different causes any better than Wikipedia does, so if you want to learn more, you should check out their [article about color blindness](#).

Dichromacy



Original Color

61, 68.615, 10.156

Protanopia

61, 9.579, 291.244

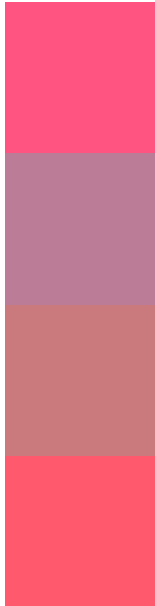
Deuteranopia

61, 17.116, 63.212



Tritanopia
61, 69.231, 26.723

Trichromacy



Original Color
61, 68.615, 10.156

Protanomaly
59, 28.433, 350.657

Deuteranomaly
60, 34.101, 20.561

Tritanomaly
61, 68.236, 20.944

Monochromacy



Original Color
61, 68.615, 10.156

Achromatopsia
58, 0.007, 296.813

Achromatomaly
57, 26.533, 2.841

CSS Examples

Text

The CSS property to change the color of the text to CIELCh 61, 68.615, 10.156 is called "color". The color property can be set on classes, ids or directly on the HTML element.

This example shows how text in the color `rgb(255, 84, 129)` looks like.

```
.text, #text, p{  
    color:rgb(255, 84, 129)  
}
```

If you want to add a text shadow in that color use the text-shadow property, you can generate a text shadow directly with our [CSS Text Shadow Generator](#).

Here you see how black text with a 4 pixel rgb(255, 84, 129) colored shadow looks like.

```
.shadow{ text-shadow: 4px 4px 2px rgb(255, 84, 129) }
```

Border

The CSS property to change the border of an element to CIELCh 61, 68.615, 10.156 is called "border". The border property can be set on classes, ids or directly on the HTML element.

This example shows the color as border, it can be applied via the CSS property "border" or "border-color".

```
.border, #border, table{ border:4px solid rgb(255, 84, 129) }
```

If only the border color should be changed use the property `border-color`.

```
.border{ border-color:rgb(255, 84, 129) }
```

If you want to add a box shadow in that color use:

Here you see how a box with a 4 pixel `rgb(255, 84, 129)` colored shadow looks like.

```
.boxshadow{ -moz-box-shadow:4px 4px 4px  
4px rgb(255, 84, 129); -webkit-box-  
shadow:4px 4px 4px 4px rgb(255, 84, 129);  
box-shadow:4px 4px 4px 4px rgb(255, 84,  
129) }
```

Background

The CSS property to change the background color of an element to CIELCh 61, 68.615, 10.156 is called "background". The background property can be set on classes, ids or directly on the HTML element.

```
.background, #background, body{  
background: rgb(255, 84, 129) }
```

If only the background color should be changed can be used:

```
.background{ background-color: rgb(255, 84,  
129) }
```

This example shows the color as background, it is applied via the CSS property "background".

To optimize and compress your CSS code, you can use our [online CSS compressor and optimizer](#) based on csstidy. If you want to create a linear or radial gradient as background or border, check our [CSS Gradient Generator](#).

Hey! You found this booklet interesting? Support Converting Colors with the new Membership Option!

The pro membership hides all ads, plus gives you double the colors in the color bucket, and more awesome pro features!

[Learn more, Memberships starting at \\$2.50/m!](#)

**Follow me
on Twitter!**

@ConvertingColor