

Converting Colors

CIELCh(61, 69.039, 10.930)

Have a look what the booklet for
CIELCh(61, 69.039, 10.930) contains.

CIELCh(61, 68.658, 11.083)	3
<i>Conversions</i>	4
<i>Details</i>	6
<i>Harmonies</i>	11
<i>Previews</i>	20
<i>Color Blindness Simulation</i>	23
<i>CSS Examples</i>	26

Color

CIELCh(61, 68.658, 11.083)

Conversions

Conversions Part 1

Format	Color
Hex	FF547F
RGB	255, 84, 127
RGB Percent	100%, 33%, 50%
CMY	0.0000, 0.6693, 0.5009
CMYK	0.00, 0.67, 0.50, 0.00
HSL	345°, 100%, 67%
HSV	345°, 67%, 100%
XYZ	48.3996, 29.2481, 23.2612
YIQ	140.0310, 88.1130, 49.6250

Conversions

Conversions Part 2

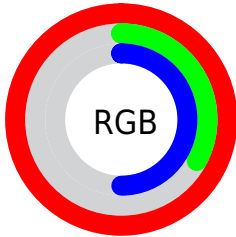
Format	Color
R _Y B	255, 84, 127
Decimal	16733311
CIE Lab	61.00, 67.38, 13.20
CIE LCh	61, 68.658, 11.083
Yxy	29.2481, 0.4796, 0.2898
Android (android.graphics.Color)	4294923391 (0xFFFF547F)
YUV	140.0310, -6.4243, 100.8278
Hunter-Lab	54.0815, 65.1036, 12.3556

Details

The CIELCh color **61, 68.658, 11.083** is a light color, and the websafe version is hex **FF6699**. The color can be described as light muted rose. A complement of this color would be **91, 53.986, 171.650**, and the grayscale version is **58, 0.007, 296.813**.

A 20% lighter version of the original color is **72, 46.247, 0.040**, and **41, 68.455, 11.217** is the 20% darker color. If you saturate the color by 10%, you get **58, 76.823, 14.772**, and if you desaturate by 10%, it is **65, 59.016, 8.084**.

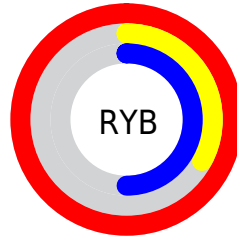
Distribution



Red (100%)

Green (33%)

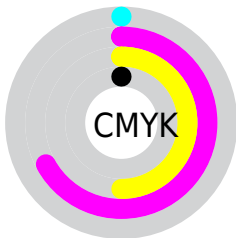
Blue (50%)



Red (100%)

Yellow (33%)

Blue (50%)

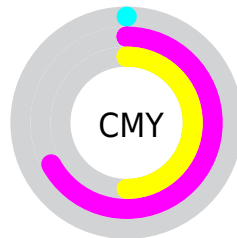


Cyan (0%)

Magenta (67%)

Yellow (50%)

Black (0%)



Cyan (0%)

Magenta (67%)

Yellow (50%)


Brightness & Saturation Gradients

These gradients show how the CIELCh color 61, 68.658, 11.083 changes by changing the brightness by 10 percent. The first figure shows a shift by +10% for each color and the second figure -10%.

Similar to the brightness gradients but the following saturation gradients show a change of the CIELCh color 61, 68.658, 11.083 by changing the saturation by 10% instead.

 61, 68.658, 11.083

 61, 68.658, 11.083

 100, 68.658,
11.083

 51, 68.658, 11.083

 81, 68.658, 11.083

 41, 68.658, 11.083

 91, 68.658, 11.083

 31, 68.658, 11.083

 21, 68.658, 11.083

 11, 68.658, 11.083

 1, 68.658, 11.083

 0, 68.658, 11.083

 61, 68.658, 11.083

 61, 68.658, 11.083

 58, 76.823, 14.772

 65, 59.016, 8.084

■ 55, 83.632, 19.418

■ 70, 48.668, 5.756

■ 54, 89.155, 24.879

■ 76, 37.954, 3.893

■ 54, 90.790, 26.569

■ 82, 27.243, 2.371

■ 89, 16.783, 1.095

■ 95, 6.716, 359.972

100, 0.012,
296.813

Harmonies

Complementary

The Complementary color scheme is a pair of colors which are on the opposite of each other on the color wheel.



61, 68.658, 11.083



91, 53.986, 171.650

Rectangle

The Rectangle color scheme consists of four colors that form a rectangle on the color wheel.



61, 68.658, 11.083



61, 68.658, 61.083



61, 68.658, 191.083



61, 68.658, 241.083

Sweetspot

The Sweet Spot groups the original color and five complimentary colors.



61, 68.546, 11.033



87, 19.953, 1.465



59, 96.578, 319.257



44, 13.692, 1.820



0, 0.000, 0.000



53, 0.007, 296.813

Same Dimension

The Same Dimension uses a secret algorithm to generate beautiful new colors.



61, 68.546, 11.033



57, 79.067, 16.098



67, 64.840, 43.570



50, 5.540, 0.256



40, 72.557, 25.490



10, 31.691, 15.895

Inverse Universe

The Inverse Universe completely reimagines the original color for something new.



61, 68.546, 11.033



57, 79.067, 16.098



81, 38.202, 231.597



50, 5.540, 0.256



40, 72.557, 25.490



10, 31.691, 15.895

Previews

White Background



This preview shows how the CIELCh color 61, 68.658, 11.083 looks on a white background.

Color Contrast Check

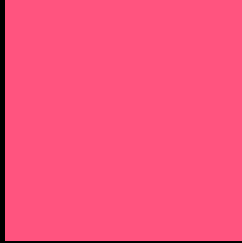
Large Text (above 18pt) WCAG AA ✓ Pass

Any Text WCAG AA ✗ Fail

Large Text (above 18pt) WCAG AAA ✗ Fail

Any Text WCAG AAA ✗ Fail

Black Background



This preview shows how the CIELCh color 61, 68.658, 11.083 looks on a black background.

Color Contrast Check

Large Text (above 18pt) WCAG AA ✓ Pass

Any Text WCAG AA ✓ Pass

Large Text (above 18pt) WCAG AAA ✓ Pass

Any Text WCAG AAA × Fail

If you want to check with other color combinations, try the [Color Contrast Checker](#).

CIELCh 61, 68.658, 11.083

Background



This preview shows how black text looks on a background with the CIELCh color 61, 68.658, 11.083.

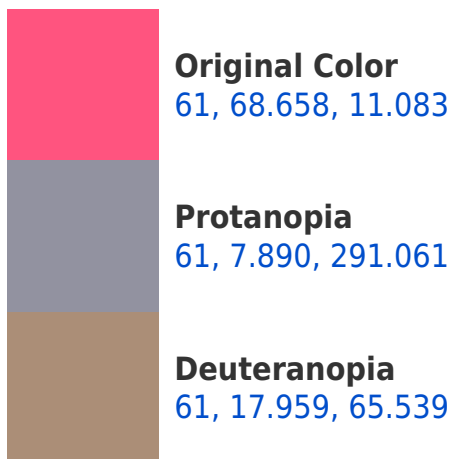


This preview shows how white text looks on a background with the CIELCh color 61, 68.658, 11.083.

Color Blindness Simulation

Color vision deficiency is a very complex topic, and I could not describe the different causes any better than Wikipedia does, so if you want to learn more, you should check out their [article about color blindness](#).

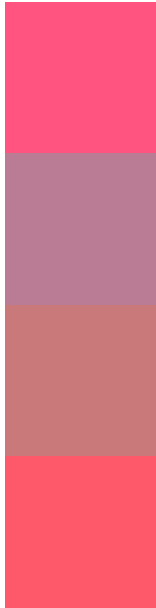
Dichromacy





Tritanopia
61, 69.231, 26.723

Trichromacy



Original Color
61, 68.658, 11.083

Protanomaly
59, 27.749, 353.754

Deuteranomaly
60, 34.282, 22.396

Tritanomaly
61, 68.372, 21.396

Monochromacy



Original Color
61, 68.658, 11.083

Achromatopsia
58, 0.007, 296.813

Achromatomaly
57, 26.419, 4.027

CSS Examples

Text

The CSS property to change the color of the text to CIELCh 61, 68.658, 11.083 is called "color". The color property can be set on classes, ids or directly on the HTML element.

This example shows how text in the color `rgb(255, 84, 127)` looks like.

```
.text, #text, p{  
    color:rgb(255, 84, 127)  
}
```

If you want to add a text shadow in that color use the text-shadow property, you can generate a text shadow directly with our [CSS Text Shadow Generator](#).

Here you see how black text with a 4 pixel rgb(255, 84, 127) colored shadow looks like.

```
.shadow{ text-shadow: 4px 4px 2px rgb(255, 84, 127) }
```

Border

The CSS property to change the border of an element to CIELCh 61, 68.658, 11.083 is called "border". The border property can be set on classes, ids or directly on the HTML element.

This example shows the color as border, it can be applied via the CSS property "border" or "border-color".

```
.border, #border, table{ border:4px solid rgb(255, 84, 127) }
```

If only the border color should be changed use the property `border-color`.

```
.border{ border-color:rgb(255, 84, 127) }
```

If you want to add a box shadow in that color use:

Here you see how a box with a 4 pixel `rgb(255, 84, 127)` colored shadow looks like.

```
.boxshadow{ -moz-box-shadow:4px 4px 4px  
4px rgb(255, 84, 127); -webkit-box-  
shadow:4px 4px 4px 4px rgb(255, 84, 127);  
box-shadow:4px 4px 4px 4px rgb(255, 84,  
127) }
```

Background

The CSS property to change the background color of an element to CIELCh 61, 68.658, 11.083 is called "background". The background property can be set on classes, ids or directly on the HTML element.

```
.background, #background, body{  
background: rgb(255, 84, 127) }
```

If only the background color should be changed can be used:

```
.background{ background-color: rgb(255, 84,  
127) }
```

This example shows the color as background, it is applied via the CSS property "background".

To optimize and compress your CSS code, you can use our [online CSS compressor and optimizer](#) based on csstidy. If you want to create a linear or radial gradient as background or border, check our [CSS Gradient Generator](#).

Hey! You found this booklet interesting? Support Converting Colors with the new Membership Option!

The pro membership hides all ads, plus gives you double the colors in the color bucket, and more awesome pro features!

[Learn more, Memberships starting at \\$2.50/m!](#)

**Follow me
on Twitter!**

@ConvertingColor