

Converting Colors

CIELCh(61, 69.422, 0.540)

Have a look what the booklet for
CIELCh(61, 69.422, 0.540) contains.

CIELCh(61, 69.129, 0.396)	3
<i>Conversions</i>	4
<i>Details</i>	6
<i>Harmonies</i>	11
<i>Previews</i>	20
<i>Color Blindness Simulation</i>	23
<i>CSS Examples</i>	26

Color

CIELCh(61, 69.129, 0.396)

Conversions

Conversions Part 1

Format	Color
Hex	FD5395
RGB	253, 83, 149
RGB Percent	99%, 33%, 58%
CMY	0.0077, 0.6744, 0.4156
CMYK	0.00, 0.67, 0.41, 0.01
HSL	337°, 98%, 66%
HSV	337°, 67%, 99%
XYZ	49.0387, 29.2481, 31.5037
YIQ	141.3540, 80.1340, 56.5660

Conversions

Conversions Part 2

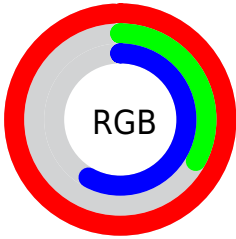
Format	Color
R _{YB}	253, 83, 149
Decimal	16602005
CIE _{Lab}	61.00, 69.13, 0.48
CIE _{LCh}	61, 69.129, 0.396
Y _{xy}	29.2481, 0.4467, 0.2664
Android (android.graphics.Color)	4294792085 (0xFFFD5395)
YUV	141.3540, 3.7695, 97.9135
Hunter-Lab	54.0815, 67.2131, 3.3194

Details

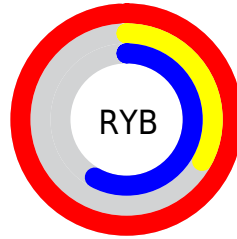
The CIELCh color **61, 69.129, 0.396** is a light color, and the websafe version is hex **FF6699**. The color can be described as light muted rose. A complement of this color would be **90, 61.448, 161.892**, and the grayscale version is **59, 0.008, 296.813**.

A 20% lighter version of the original color is **73, 51.539, 345.930**, and **41, 68.412, 0.373** is the 20% darker color. If you saturate the color by 10%, you get **58, 76.066, 3.542**, and if you desaturate by 10%, it is **65, 60.426, 357.921**.

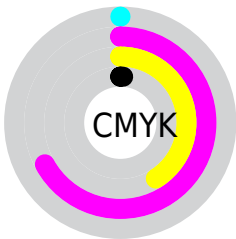
Distribution



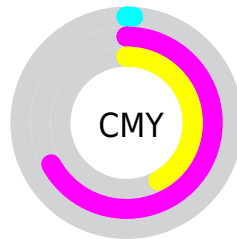
- Red (99%)
- Green (33%)
- Blue (58%)



- Red (99%)
- Yellow (33%)
- Blue (58%)



- Cyan (0%)
- Magenta (67%)
- Yellow (41%)
- Black (1%)



- Cyan (1%)
- Magenta (67%)
- Yellow (42%)

Brightness & Saturation Gradients

These gradients show how the CIELCh color 61, 69.129, 0.396 changes by changing the brightness by 10 percent. The first figure shows a shift by +10% for each color and the second figure -10%.

Similar to the brightness gradients but the following saturation gradients show a change of the CIELCh color 61, 69.129, 0.396 by changing the saturation by 10% instead.

 61, 69.129, 0.396  61, 69.129, 0.396

 100, 69.129, 0.396  51, 69.129, 0.396

 81, 69.129, 0.396  41, 69.129, 0.396

 91, 69.129, 0.396  31, 69.129, 0.396

 21, 69.129, 0.396

 11, 69.129, 0.396

 1, 69.129, 0.396

 0, 69.129, 0.396

 61, 69.129, 0.396  61, 69.129, 0.396

 58, 76.066, 3.542  65, 60.426,

■ 55, 80.955, 7.536 357.921

■ 54, 83.987, 12.482 ■ 70, 50.489,
355.940

■ 54, 84.741, 13.960

■ 76, 39.848,
354.318

■ 82, 28.939,
352.958

■ 88, 18.071,
351.786

■ 95, 7.437, 350.732

100, 0.686,
200.327

Harmonies

Complementary

The Complementary color scheme is a pair of colors which are on the opposite of each other on the color wheel.



61, 69.129, 0.396



90, 61.448, 161.892

Rectangle

The Rectangle color scheme consists of four colors that form a rectangle on the color wheel.



61, 69.129, 0.396



61, 69.129, 50.396



61, 69.129, 180.396



61, 69.129, 230.396

Sweetspot

The Sweet Spot groups the original color and five complimentary colors.



61, 69.125, 0.397



87, 21.249, 352.101



56, 96.207, 315.238



44, 14.549, 352.427



0, 0.000, 0.000



53, 0.007, 296.813

Same Dimension

The Same Dimension uses a secret algorithm to generate beautiful new colors.



61, 69.125, 0.397



57, 78.657, 4.970



62, 69.833, 34.832



50, 5.946, 350.974



41, 68.488, 12.956



10, 31.286, 5.797

Inverse Universe

The Inverse Universe completely reimagines the original color for something new.



61, 69.125, 0.397



57, 78.657, 4.970



86, 39.953, 210.041



50, 5.946, 350.974



41, 68.488, 12.956



10, 31.286, 5.797

Previews

White Background



This preview shows how the CIELCh color 61, 69.129, 0.396 looks on a white background.

Color Contrast Check

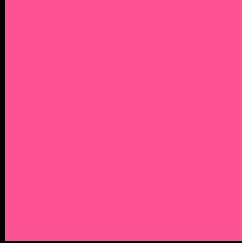
Large Text (above 18pt) WCAG AA ✓ Pass

Any Text WCAG AA ✗ Fail

Large Text (above 18pt) WCAG AAA ✗ Fail

Any Text WCAG AAA ✗ Fail

Black Background



This preview shows how the CIELCh color 61, 69.129, 0.396 looks on a black background.

Color Contrast Check

Large Text (above 18pt) WCAG AA ✓ Pass

Any Text WCAG AA ✓ Pass

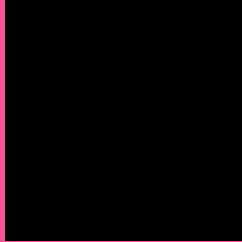
Large Text (above 18pt) WCAG AAA ✓ Pass

Any Text WCAG AAA × Fail

If you want to check with other color combinations, try the [Color Contrast Checker](#).

CIELCh 61, 69.129, 0.396

Background



This preview shows how black text looks on a background with the CIELCh color 61, 69.129, 0.396.



This preview shows how white text looks on a background with the CIELCh color 61, 69.129, 0.396.

Color Blindness Simulation

Color vision deficiency is a very complex topic, and I could not describe the different causes any better than Wikipedia does, so if you want to learn more, you should check out their [article about color blindness](#).

Dichromacy



Original Color

61, 69.129, 0.396

Protanopia

61, 23.744, 285.427

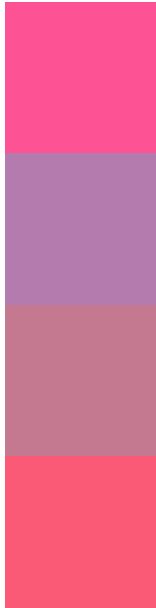
Deuteranopia

61, 8.823, 23.851



Tritanopia
61, 66.450, 25.685

Trichromacy



Original Color
61, 69.129, 0.396

Protanomaly
59, 35.265, 328.732

Deuteranomaly
59, 32.288, 0.018

Tritanomaly
61, 65.731, 16.187

Monochromacy



Original Color
61, 69.129, 0.396

Achromatopsia
59, 0.008, 296.813

Achromatomaly
57, 27.873, 353.846

CSS Examples

Text

The CSS property to change the color of the text to CIELCh 61, 69.129, 0.396 is called "color". The color property can be set on classes, ids or directly on the HTML element.

This example shows how text in the color `rgb(253, 83, 149)` looks like.

```
.text, #text, p{  
    color:rgb(253, 83, 149)  
}
```

If you want to add a text shadow in that color use the text-shadow property, you can generate a text shadow directly with our [CSS Text Shadow Generator](#).

Here you see how black text with a 4 pixel rgb(253, 83, 149) colored shadow looks like.

```
.shadow{ text-shadow: 4px 4px 2px rgb(253, 83, 149) }
```

Border

The CSS property to change the border of an element to CIELCh 61, 69.129, 0.396 is called "border". The border property can be set on classes, ids or directly on the HTML element.

This example shows the color as border, it can be applied via the CSS property "border" or "border-color".

```
.border, #border, table{ border:4px solid rgb(253, 83, 149) }
```

If only the border color should be changed use the property `border-color`.

```
.border{ border-color:rgb(253, 83, 149) }
```

If you want to add a box shadow in that color use:

Here you see how a box with a 4 pixel `rgb(253, 83, 149)` colored shadow looks like.

```
.boxshadow{ -moz-box-shadow:4px 4px 4px 4px rgb(253, 83, 149); -webkit-box-shadow:4px 4px 4px 4px rgb(253, 83, 149); box-shadow:4px 4px 4px 4px rgb(253, 83, 149) }
```

Background

The CSS property to change the background color of an element to CIELCh 61, 69.129, 0.396 is called "background". The background property can be set on classes, ids or directly on the HTML element.

```
.background, #background, body{  
background: rgb(253, 83, 149) }
```

If only the background color should be changed can be used:

```
.background{ background-color: rgb(253, 83,  
149) }
```

This example shows the color as background, it is applied via the CSS property "background".

To optimize and compress your CSS code, you can use our [online CSS compressor and optimizer](#) based on csstidy. If you want to create a linear or radial gradient as background or border, check our [CSS Gradient Generator](#).

Hey! You found this booklet interesting? Support Converting Colors with the new Membership Option!

The pro membership hides all ads, plus gives you double the colors in the color bucket, and more awesome pro features!

[Learn more, Memberships starting at \\$2.50/m!](#)

**Follow me
on Twitter!**

@ConvertingColor