

Converting Colors

CIELCh(61, 69.898, 2.298)

Have a look what the booklet for
CIELCh(61, 69.898, 2.298) contains.

CIELCh(61, 69.744, 2.443)	3
<i>Conversions</i>	4
<i>Details</i>	6
<i>Harmonies</i>	11
<i>Previews</i>	20
<i>Color Blindness Simulation</i>	23
<i>CSS Examples</i>	26

Color

CIELCh(61, 69.744, 2.443)

Conversions

Conversions Part 1

Format	Color
Hex	FF5291
RGB	255, 82, 145
RGB Percent	100%, 32%, 57%
CMY	0.0010, 0.6794, 0.4322
CMYK	0.00, 0.68, 0.43, 0.00
HSL	338°, 100%, 66%
HSV	338°, 68%, 100%
XYZ	49.2420, 29.2481, 29.7544
YIQ	140.9090, 82.8850, 56.2690

Conversions

Conversions Part 2

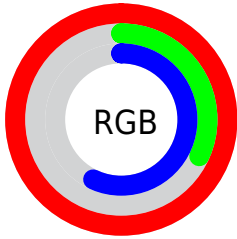
Format	Color
R _Y B	255, 82, 145
Decimal	16732817
CIE Lab	61.00, 69.68, 2.97
CIE LCh	61, 69.744, 2.443
Yxy	29.2481, 0.4549, 0.2702
Android (android.graphics.Color)	4294922897 (0xFFFF5291)
YUV	140.9090, 2.0169, 100.0578
Hunter-Lab	54.0815, 67.8839, 5.2371

Details

The CIELCh color **61, 69.744, 2.443** is a light color, and the websafe version is hex **FF6699**. The color can be described as light muted rose. A complement of this color would be **90, 60.841, 163.286**, and the grayscale version is **58, 0.007, 296.813**.

A 20% lighter version of the original color is **73, 51.076, 347.798**, and **41, 68.633, 2.886** is the 20% darker color. If you saturate the color by 10%, you get **58, 76.746, 5.782**, and if you desaturate by 10%, it is **65, 61.016, 359.820**.

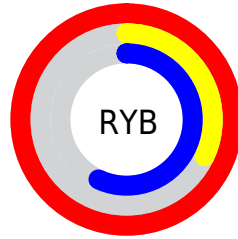
Distribution



Red (100%)

Green (32%)

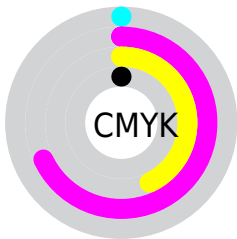
Blue (57%)



Red (100%)

Yellow (32%)

Blue (57%)

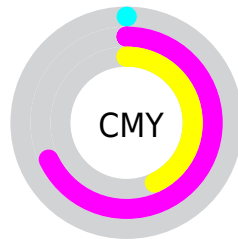


Cyan (0%)

Magenta (68%)

Yellow (43%)

Black (0%)



Cyan (0%)

Magenta (68%)

Yellow (43%)

Brightness & Saturation Gradients

These gradients show how the CIELCh color 61, 69.744, 2.443 changes by changing the brightness by 10 percent. The first figure shows a shift by +10% for each color and the second figure -10%.

Similar to the brightness gradients but the following saturation gradients show a change of the CIELCh color 61, 69.744, 2.443 by changing the saturation by 10% instead.

 61, 69.744, 2.443

 61, 69.744, 2.443

 100, 69.744, 2.443

 51, 69.744, 2.443

 81, 69.744, 2.443

 41, 69.744, 2.443

 91, 69.744, 2.443

 31, 69.744, 2.443

 21, 69.744, 2.443

 11, 69.744, 2.443

 1, 69.744, 2.443

 0, 69.744, 2.443

 61, 69.744, 2.443

 61, 69.744, 2.443

 58, 76.746, 5.782

 65, 61.016,

■ 55, 81.784, 10.009

359.820

■ 54, 85.130, 15.177

■ 70, 51.072,
357.730

■ 54, 85.792, 16.304

■ 76, 40.436,
356.031

■ 82, 29.546,
354.615

■ 88, 18.710,
353.404

■ 95, 8.124, 352.326

100, 0.086,
207.109

Harmonies

Complementary

The Complementary color scheme is a pair of colors which are on the opposite of each other on the color wheel.



61, 69.744, 2.443



90, 60.841, 163.286

Rectangle

The Rectangle color scheme consists of four colors that form a rectangle on the color wheel.



61, 69.744, 2.443



61, 69.744, 52.443



61, 69.744, 182.443



61, 69.744, 232.443

Sweetspot

The Sweet Spot groups the original color and five complimentary colors.



61, 69.740, 2.445



87, 20.982, 353.644



56, 97.582, 316.233



44, 14.371, 353.977



0, 0.000, 0.000



53, 0.007, 296.813

Same Dimension

The Same Dimension uses a secret algorithm to generate beautiful new colors.



61, 69.740, 2.445



57, 78.577, 6.991



63, 69.725, 36.925



50, 5.864, 352.495



40, 68.913, 15.253



10, 31.289, 7.821

Inverse Universe

The Inverse Universe completely reimagines the original color for something new.



61, 69.740, 2.445



57, 78.577, 6.991



85, 39.434, 215.225



50, 5.864, 352.495



40, 68.913, 15.253



10, 31.289, 7.821

Previews

White Background



This preview shows how the CIELCh color 61, 69.744, 2.443 looks on a white background.

Color Contrast Check

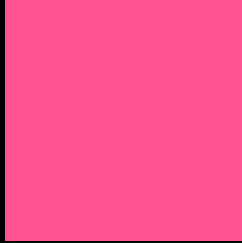
Large Text (above 18pt) WCAG AA ✓ Pass

Any Text WCAG AA ✗ Fail

Large Text (above 18pt) WCAG AAA ✗ Fail

Any Text WCAG AAA ✗ Fail

Black Background



This preview shows how the CIELCh color 61, 69.744, 2.443 looks on a black background.

Color Contrast Check

Large Text (above 18pt) WCAG AA ✓ Pass

Any Text WCAG AA ✓ Pass

Large Text (above 18pt) WCAG AAA ✓ Pass

Any Text WCAG AAA × Fail

If you want to check with other color combinations, try the [Color Contrast Checker](#).

CIELCh 61, 69.744, 2.443

Background



This preview shows how black text looks on a background with the CIELCh color 61, 69.744, 2.443.

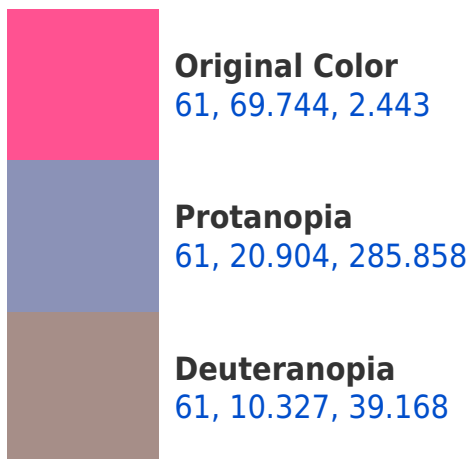


This preview shows how white text looks on a background with the CIELCh color 61, 69.744, 2.443.

Color Blindness Simulation

Color vision deficiency is a very complex topic, and I could not describe the different causes any better than Wikipedia does, so if you want to learn more, you should check out their [article about color blindness](#).

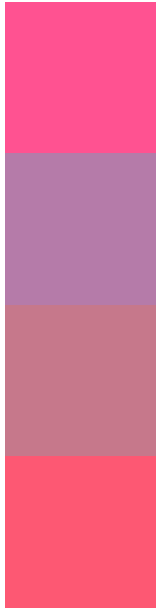
Dichromacy





Tritanopia
61, 68.179, 26.091

Trichromacy



Original Color
61, 69.744, 2.443

Protanomaly
59, 33.611, 332.829

Deuteranomaly
59, 32.984, 4.805

Tritanomaly
61, 67.374, 17.341

Monochromacy



Original Color
61, 69.744, 2.443

Achromatopsia
59, 0.008, 296.813

Achromatomaly
57, 28.049, 355.387

CSS Examples

Text

The CSS property to change the color of the text to CIELCh 61, 69.744, 2.443 is called "color". The color property can be set on classes, ids or directly on the HTML element.

This example shows how text in the color `rgb(255, 82, 145)` looks like.

```
.text, #text, p{  
    color:rgb(255, 82, 145)  
}
```

If you want to add a text shadow in that color use the text-shadow property, you can generate a text shadow directly with our [CSS Text Shadow Generator](#).

Here you see how black text with a 4 pixel rgb(255, 82, 145) colored shadow looks like.

```
.shadow{ text-shadow: 4px 4px 2px rgb(255, 82, 145) }
```

Border

The CSS property to change the border of an element to CIELCh 61, 69.744, 2.443 is called "border". The border property can be set on classes, ids or directly on the HTML element.

This example shows the color as border, it can be applied via the CSS property "border" or "border-color".

```
.border, #border, table{ border:4px solid rgb(255, 82, 145) }
```

If only the border color should be changed use the property `border-color`.

```
.border{ border-color:rgb(255, 82, 145) }
```

If you want to add a box shadow in that color use:

Here you see how a box with a 4 pixel `rgb(255, 82, 145)` colored shadow looks like.

```
.boxshadow{ -moz-box-shadow:4px 4px 4px  
4px rgb(255, 82, 145); -webkit-box-  
shadow:4px 4px 4px 4px rgb(255, 82, 145);  
box-shadow:4px 4px 4px 4px rgb(255, 82,  
145) }
```

Background

The CSS property to change the background color of an element to CIELCh 61, 69.744, 2.443 is called "background". The background property can be set on classes, ids or directly on the HTML element.

```
.background, #background, body{  
background: rgb(255, 82, 145) }
```

If only the background color should be changed can be used:

```
.background{ background-color: rgb(255, 82,  
145) }
```

This example shows the color as background, it is applied via the CSS property "background".

To optimize and compress your CSS code, you can use our [online CSS compressor and optimizer](#) based on csstidy. If you want to create a linear or radial gradient as background or border, check our [CSS Gradient Generator](#).

Hey! You found this booklet interesting? Support Converting Colors with the new Membership Option!

The pro membership hides all ads, plus gives you double the colors in the color bucket, and more awesome pro features!

[Learn more, Memberships starting at \\$2.50/m!](#)

**Follow me
on Twitter!**

@ConvertingColor