

Converting Colors

CIELCh(62, 14.398, 51.464)

Have a look what the booklet for
CIELCh(62, 14.398, 51.464) contains.

CIELCh(62, 14.420, 52.935)	3
<i>Conversions</i>	4
<i>Details</i>	6
<i>Harmonies</i>	11
<i>Previews</i>	20
<i>Color Blindness Simulation</i>	23
<i>CSS Examples</i>	26

Color

CIELCh(62, 14.420, 52.935)

Conversions

Conversions Part 1

Format	Color
Hex	AD9082
RGB	173, 144, 130
RGB Percent	68%, 56%, 51%
CMY	0.3219, 0.4356, 0.4905
CMYK	0.00, 0.17, 0.25, 0.32
HSL	20°, 21%, 59%
HSV	20°, 25%, 68%
XYZ	31.1961, 30.4025, 25.3125
YIQ	151.0750, 21.7780, 1.7940

Conversions

Conversions Part 2

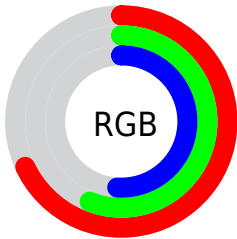
Format	Color
RYB	173, 151, 130
Decimal	11374722
CIELab	62.00, 8.69, 11.51
CIElCh	62, 14.420, 52.935
Yxy	30.4025, 0.3589, 0.3498
Android (android.graphics.Color)	4289564802 (0xFFAD9082)
YUV	151.0750, -10.3900, 19.2282
Hunter-Lab	55.1385, 4.4990, 11.3787

Details

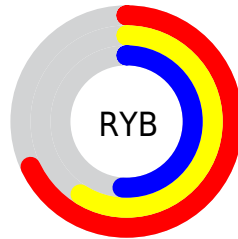
The CIELCh color **62, 14.420, 52.935** is a light color, and the websafe version is hex **CC9999**. A complement of this color would be **64, 12.585, 237.302**, and the grayscale version is **62, 0.008, 296.813**.

A 20% lighter version of the original color is **82, 14.404, 53.276**, and **42, 14.309, 53.387** is the 20% darker color. If you saturate the color by 10%, you get **59, 20.984, 52.345**, and if you desaturate by 10%, it is **65, 8.311, 53.599**.

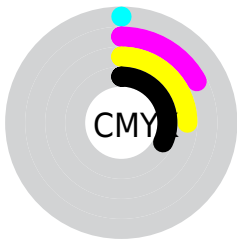
Distribution



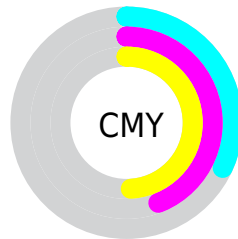
- Red (68%)
- Green (56%)
- Blue (51%)



- Red (68%)
- Yellow (59%)
- Blue (51%)



- Cyan (0%)
- Magenta (17%)
- Yellow (25%)
- Black (32%)



- Cyan (32%)
- Magenta (44%)
- Yellow (49%)

Brightness & Saturation Gradients

These gradients show how the CIELCh color 62, 14.420, 52.935 changes by changing the brightness by 10 percent. The first figure shows a shift by +10% for each color and the second figure -10%.

Similar to the brightness gradients but the following saturation gradients show a change of the CIELCh color 62, 14.420, 52.935 by changing the saturation by 10% instead.

■ 62, 14.420, 52.935

■ 62, 14.420, 52.935

■ 100, 14.420,
52.935

■ 52, 14.420, 52.935

■ 82, 14.420, 52.935

■ 42, 14.420, 52.935

■ 92, 14.420, 52.935

■ 32, 14.420, 52.935

■ 22, 14.420, 52.935

■ 12, 14.420, 52.935

■ 2, 14.420, 52.935

■ 0, 14.420, 52.935

■ 62, 14.420, 52.935

■ 62, 14.420, 52.935

■ 59, 20.984, 52.345

■ 65, 8.311, 53.599

55, 28.025, 51.829

69, 2.623, 54.212

52, 35.537, 51.407

73, 2.685, 235.306

49, 43.452, 51.071

76, 7.657, 235.980

47, 51.582, 50.760

80, 12.330,
236.746

44, 59.487, 50.299

83, 16.742,
237.522

42, 66.279, 49.300

87, 20.924,
238.293

41, 69.559, 48.891

90, 21.947,
223.351

93, 24.093,
205.571

Harmonies

Complementary

The Complementary color scheme is a pair of colors which are on the opposite of each other on the color wheel.



62, 14.420, 52.935



64, 12.585, 237.302

Rectangle

The Rectangle color scheme consists of four colors that form a rectangle on the color wheel.



62, 14.420, 52.935



62, 14.420, 102.935



62, 14.420, 232.935



62, 14.420, 282.935

Sweetspot

The Sweet Spot groups the original color and five complimentary colors.



62, 14.420, 52.944



86, 4.705, 54.099



59, 23.317, 336.739



45, 3.060, 54.065



95, 0.011, 296.813



47, 0.006, 296.813

Same Dimension

The Same Dimension uses a secret algorithm to generate beautiful new colors.



62, 14.420, 52.944



76, 21.962, 52.596



68, 19.480, 98.582



35, 3.110, 53.966



35, 62.533, 49.292



3, 6.437, 47.315

Inverse Universe

The Inverse Universe completely reimagines the original color for something new.



64, 12.585, 237.302



79, 18.500, 238.094



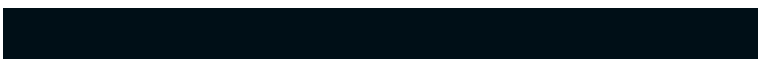
58, 20.089, 284.660



35, 2.970, 235.619



41, 34.174, 259.844



4, 6.524, 246.115

Previews

White Background



This preview shows how the CIELCh color 62, 14.420, 52.935 looks on a white background.

Color Contrast Check

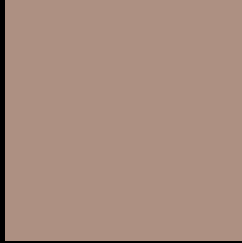
Large Text (above 18pt) WCAG AA × Fail

Any Text WCAG AA × Fail

Large Text (above 18pt) WCAG AAA × Fail

Any Text WCAG AAA × Fail

Black Background



This preview shows how the CIE LCh color 62, 14.420, 52.935 looks on a black background.

Color Contrast Check

Large Text (above 18pt) WCAG AA ✓ Pass

Any Text WCAG AA ✓ Pass

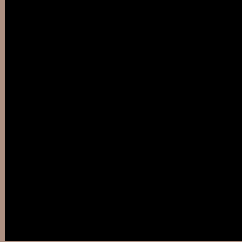
Large Text (above 18pt) WCAG AAA ✓ Pass

Any Text WCAG AAA ✓ Pass

If you want to check with other color combinations, try the [Color Contrast Checker](#).

CIELCh 62, 14.420, 52.935

Background



This preview shows how black text looks on a background with the CIELCh color 62, 14.420, 52.935.



This preview shows how white text looks on a background with the CIELCh color 62, 14.420, 52.935.

Color Blindness Simulation

Color vision deficiency is a very complex topic, and I could not describe the different causes any better than Wikipedia does, so if you want to learn more, you should check out their [article about color blindness](#).

Dichromacy



Original Color

62, 14.420, 52.935

Protanopia

62, 9.895, 92.467

Deuteranopia

62, 14.064, 53.846



Tritanopia
62, 14.686, 356.259

Trichromacy



Original Color
62, 14.420, 52.935

Protanomaly
62, 10.853, 74.794

Deuteranomaly
62, 14.064, 53.846

Tritanomaly
62, 12.861, 15.722

Monochromacy



Original Color
62, 14.420, 52.935

Achromatopsia
62, 0.008, 296.813

Achromatomaly
62, 5.169, 52.337

CSS Examples

Text

The CSS property to change the color of the text to CIELCh 62, 14.420, 52.935 is called "color". The color property can be set on classes, ids or directly on the HTML element.

This example shows how text in the color `rgb(173, 144, 130)` looks like.

```
.text, #text, p{  
    color:rgb(173, 144, 130)  
}
```

If you want to add a text shadow in that color use the text-shadow property, you can generate a text shadow directly with our [CSS Text Shadow Generator](#).

Here you see how black text with a 4 pixel rgb(173, 144, 130) colored shadow looks like.

```
.shadow{ text-shadow: 4px 4px 2px rgb(173, 144, 130) }
```

Border

The CSS property to change the border of an element to CIELCh 62, 14.420, 52.935 is called "border". The border property can be set on classes, ids or directly on the HTML element.

This example shows the color as border, it can be applied via the CSS property "border" or "border-color".

```
.border, #border, table{ border:4px solid rgb(173, 144, 130) }
```

If only the border color should be changed use the property `border-color`.

```
.border{ border-color:rgb(173, 144, 130) }
```

If you want to add a box shadow in that color use:

Here you see how a box with a 4 pixel `rgb(173, 144, 130)` colored shadow looks like.

```
.boxshadow{ -moz-box-shadow:4px 4px 4px  
4px rgb(173, 144, 130); -webkit-box-  
shadow:4px 4px 4px 4px rgb(173, 144, 130);  
box-shadow:4px 4px 4px 4px rgb(173, 144,  
130) }
```

Background

The CSS property to change the background color of an element to CIELCh 62, 14.420, 52.935 is called "background". The background property can be set on classes, ids or directly on the HTML element.

```
.background, #background, body{  
background: rgb(173, 144, 130) }
```

If only the background color should be changed can be used:

```
.background{ background-color: rgb(173,  
144, 130) }
```

This example shows the color as background, it is applied via the CSS property "background".

To optimize and compress your CSS code, you can use our [online CSS compressor and optimizer](#) based on csstidy. If you want to create a linear or radial gradient as background or border, check our [CSS Gradient Generator](#).

Hey! You found this booklet interesting? Support Converting Colors with the new Membership Option!

The pro membership hides all ads, plus gives you double the colors in the color bucket, and more awesome pro features!

[Learn more, Memberships starting at \\$2.50/m!](#)

**Follow me
on Twitter!**

@ConvertingColor