

Converting Colors

CIELCh(62, 15.998, 41.305)

Have a look what the booklet for
CIELCh(62, 15.998, 41.305) contains.

CIELCh(62, 15.990, 40.988)	3
<i>Conversions</i>	4
<i>Details</i>	6
<i>Harmonies</i>	11
<i>Previews</i>	20
<i>Color Blindness Simulation</i>	23
<i>CSS Examples</i>	26

Color

CIELCh(62, 15.990, 40.988)

Conversions

Conversions Part 1

Format	Color
Hex	B28E84
RGB	178, 142, 132
RGB Percent	70%, 56%, 52%
CMY	0.3026, 0.4438, 0.4830
CMYK	0.00, 0.20, 0.26, 0.30
HSL	13°, 23%, 61%
HSV	13°, 26%, 70%
XYZ	32.1220, 30.4025, 25.9467
YIQ	151.6240, 24.6660, 4.5220

Conversions

Conversions Part 2

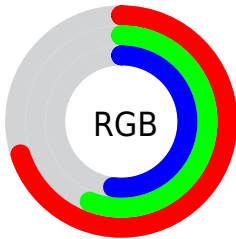
Format	Color
RYB	178, 145, 132
Decimal	11701892
CIELab	62.00, 12.07, 10.49
CIElCh	62, 15.990, 40.988
Yxy	30.4025, 0.3631, 0.3436
Android (android.graphics.Color)	4289891972 (0xFFB28E84)
YUV	151.6240, -9.6746, 23.1318
Hunter-Lab	55.1385, 7.4962, 10.6967

Details

The CIELCh color $62, 15.990, 40.988$ is a light color, and the websafe version is hex `CC9999`. A complement of this color would be $67, 13.482, 222.850$, and the grayscale version is $63, 0.008, 296.813$.

A 20% lighter version of the original color is $82, 15.828, 41.783$, and $42, 15.601, 41.205$ is the 20% darker color. If you saturate the color by 10%, you get $58, 23.103, 41.028$, and if you desaturate by 10%, it is $66, 9.414, 41.088$.

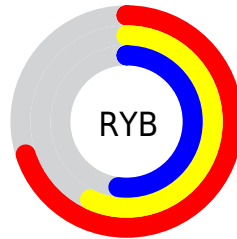
Distribution



Red (70%)

Green (56%)

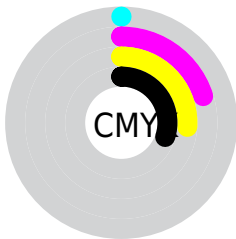
Blue (52%)



Red (70%)

Yellow (57%)

Blue (52%)

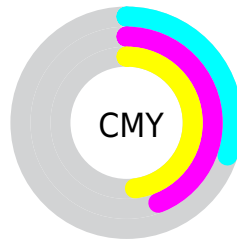


Cyan (0%)

Magenta (20%)

Yellow (26%)

Black (30%)



Cyan (30%)

Magenta (44%)

Yellow (48%)

Brightness & Saturation Gradients

These gradients show how the CIELCh color 62, 15.990, 40.988 changes by changing the brightness by 10 percent. The first figure shows a shift by +10% for each color and the second figure -10%.

Similar to the brightness gradients but the following saturation gradients show a change of the CIELCh color 62, 15.990, 40.988 by changing the saturation by 10% instead.

62, 15.990, 40.988

62, 15.990, 40.988

100, 15.990,
40.988

52, 15.990, 40.988

82, 15.990, 40.988

42, 15.990, 40.988

92, 15.990, 40.988

32, 15.990, 40.988

22, 15.990, 40.988

12, 15.990, 40.988

2, 15.990, 40.988

0, 15.990, 40.988

62, 15.990, 40.988

62, 15.990, 40.988

58, 23.103, 41.028

66, 9.414, 41.088

54, 30.769, 41.225

70, 3.341, 41.212

51, 38.967, 41.618

74, 2.274, 221.874

48, 47.606, 42.218

78, 7.479, 222.077

45, 56.463, 42.975

83, 12.320,
222.445

42, 65.030, 43.688

87, 16.842,
222.855

40, 72.264, 43.888

91, 20.884,
221.463

39, 75.077, 44.138

95, 23.995,
200.215

95, 24.600,
197.901

Harmonies

Complementary

The Complementary color scheme is a pair of colors which are on the opposite of each other on the color wheel.



62, 15.990, 40.988



67, 13.482, 222.850

Rectangle

The Rectangle color scheme consists of four colors that form a rectangle on the color wheel.



62, 15.990, 40.988



62, 15.990, 90.988



62, 15.990, 220.988



62, 15.990, 270.988

Sweetspot

The Sweet Spot groups the original color and five complimentary colors.



62, 15.989, 40.996



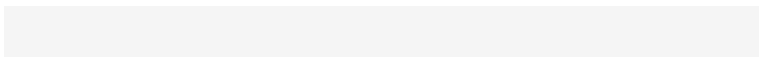
88, 5.714, 41.197



61, 26.595, 332.771



46, 4.119, 41.178



96, 0.011, 296.813



49, 0.007, 296.813

Same Dimension

The Same Dimension uses a secret algorithm to generate beautiful new colors.



62, 15.989, 40.996



76, 24.359, 40.996



68, 18.833, 91.744



36, 3.284, 41.182



34, 66.815, 44.364



3, 7.911, 35.822

Inverse Universe

The Inverse Universe completely reimagines the original color for something new.



67, 13.482, 222.850



83, 19.674, 223.304



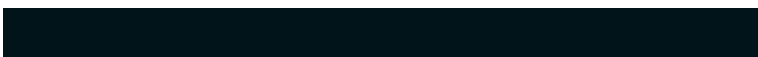
60, 19.001, 278.615



37, 3.104, 221.956



47, 30.260, 238.680



5, 7.485, 231.989

Previews

White Background



This preview shows how the CIELCh color 62, 15.990, 40.988 looks on a white background.

Color Contrast Check

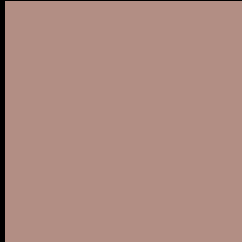
Large Text (above 18pt) WCAG AA × Fail

Any Text WCAG AA × Fail

Large Text (above 18pt) WCAG AAA × Fail

Any Text WCAG AAA × Fail

Black Background



This preview shows how the CIE LCh color 62, 15.990, 40.988 looks on a black background.

Color Contrast Check

Large Text (above 18pt) WCAG AA ✓ Pass

Any Text WCAG AA ✓ Pass

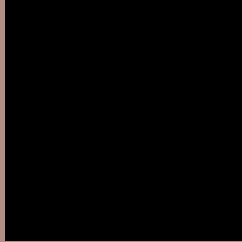
Large Text (above 18pt) WCAG AAA ✓ Pass

Any Text WCAG AAA ✓ Pass

If you want to check with other color combinations, try the [Color Contrast Checker](#).

CIELCh 62, 15.990, 40.988

Background



This preview shows how black text looks on a background with the CIELCh color 62, 15.990, 40.988.



This preview shows how white text looks on a background with the CIELCh color 62, 15.990, 40.988.

Color Blindness Simulation

Color vision deficiency is a very complex topic, and I could not describe the different causes any better than Wikipedia does, so if you want to learn more, you should check out their [article about color blindness](#).

Dichromacy



Original Color

62, 15.990, 40.988

Protanopia

62, 8.170, 92.142

Deuteranopia

62, 13.371, 52.963



Tritanopia
62, 17.310, 0.543

Trichromacy



Original Color
62, 15.990, 40.988

Protanomaly
62, 10.054, 65.858

Deuteranomaly
62, 14.174, 48.462

Tritanomaly
62, 15.781, 14.957

Monochromacy



Original Color
62, 15.990, 40.988

Achromatopsia
62, 0.008, 296.813

Achromatomaly
62, 5.608, 43.200

CSS Examples

Text

The CSS property to change the color of the text to CIELCh 62, 15.990, 40.988 is called "color". The color property can be set on classes, ids or directly on the HTML element.

This example shows how text in the color `rgb(178, 142, 132)` looks like.

```
.text, #text, p{  
    color:rgb(178, 142, 132)  
}
```

If you want to add a text shadow in that color use the text-shadow property, you can generate a text shadow directly with our [CSS Text Shadow Generator](#).

Here you see how black text with a 4 pixel rgb(178, 142, 132) colored shadow looks like.

```
.shadow{ text-shadow: 4px 4px 2px rgb(178, 142, 132) }
```

Border

The CSS property to change the border of an element to CIELCh 62, 15.990, 40.988 is called "border". The border property can be set on classes, ids or directly on the HTML element.

This example shows the color as border, it can be applied via the CSS property "border" or "border-color".

```
.border, #border, table{ border:4px solid rgb(178, 142, 132) }
```

If only the border color should be changed use the property `border-color`.

```
.border{ border-color:rgb(178, 142, 132) }
```

If you want to add a box shadow in that color use:

Here you see how a box with a 4 pixel `rgb(178, 142, 132)` colored shadow looks like.

```
.boxshadow{ -moz-box-shadow:4px 4px 4px  
4px rgb(178, 142, 132); -webkit-box-  
shadow:4px 4px 4px 4px rgb(178, 142, 132);  
box-shadow:4px 4px 4px 4px rgb(178, 142,  
132) }
```

Background

The CSS property to change the background color of an element to CIELCh 62, 15.990, 40.988 is called "background". The background property can be set on classes, ids or directly on the HTML element.

```
.background, #background, body{  
background: rgb(178, 142, 132) }
```

If only the background color should be changed can be used:

```
.background{ background-color: rgb(178,  
142, 132) }
```

This example shows the color as background, it is applied via the CSS property "background".

To optimize and compress your CSS code, you can use our [online CSS compressor and optimizer](#) based on csstidy. If you want to create a linear or radial gradient as background or border, check our [CSS Gradient Generator](#).

Hey! You found this booklet interesting? Support Converting Colors with the new Membership Option!

The pro membership hides all ads, plus gives you double the colors in the color bucket, and more awesome pro features!

[Learn more, Memberships starting at \\$2.50/m!](#)

**Follow me
on Twitter!**

@ConvertingColor