

Converting Colors

CIELCh(62, 16.482, 35.152)

Have a look what the booklet for
CIELCh(62, 16.482, 35.152) contains.

CIELCh(62, 16.608, 34.391)	3
<i>Conversions</i>	4
<i>Details</i>	6
<i>Harmonies</i>	11
<i>Previews</i>	20
<i>Color Blindness Simulation</i>	23
<i>CSS Examples</i>	26

Color

CIELCh(62, 16.608, 34.391)

Conversions

Conversions Part 1

Format	Color
Hex	B48D86
RGB	180, 141, 134
RGB Percent	71%, 55%, 53%
CMY	0.2948, 0.4477, 0.4751
CMYK	0.00, 0.22, 0.26, 0.29
HSL	9°, 23%, 62%
HSV	9°, 26%, 71%
XYZ	32.5765, 30.4025, 26.6479
YIQ	151.8630, 25.4910, 6.0910

Conversions

Conversions Part 2

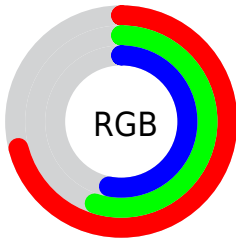
Format	Color
R _Y B	180, 142, 134
Decimal	11832710
CIE Lab	62.00, 13.70, 9.38
CIE LCh	62, 16.608, 34.391
Yxy	30.4025, 0.3635, 0.3392
Android (android.graphics.Color)	4290022790 (0xFFB48D86)
YUV	151.8630, -8.8065, 24.6761
Hunter-Lab	55.1385, 8.9676, 9.9427

Details

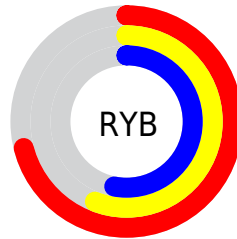
The CIELCh color **62, 16.608, 34.391** is a light color, and the websafe version is hex **CC9999**. A complement of this color would be **68, 13.936, 214.531**, and the grayscale version is **63, 0.008, 296.813**.

A 20% lighter version of the original color is **82, 16.381, 35.371**, and **42, 16.480, 36.013** is the 20% darker color. If you saturate the color by 10%, you get **58, 24.075, 34.815**, and if you desaturate by 10%, it is **66, 9.702, 34.146**.

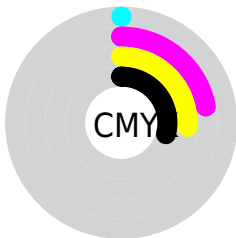
Distribution



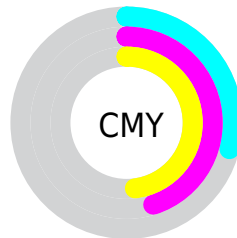
- Red (71%)
- Green (55%)
- Blue (53%)



- Red (71%)
- Yellow (56%)
- Blue (53%)



- Cyan (0%)
- Magenta (22%)
- Yellow (26%)
- Black (29%)



- Cyan (29%)
- Magenta (45%)
- Yellow (48%)


Brightness & Saturation Gradients

These gradients show how the CIELCh color 62, 16.608, 34.391 changes by changing the brightness by 10 percent. The first figure shows a shift by +10% for each color and the second figure -10%.

Similar to the brightness gradients but the following saturation gradients show a change of the CIELCh color 62, 16.608, 34.391 by changing the saturation by 10% instead.

 62, 16.608, 34.391

 62, 16.608, 34.391

 100, 16.608,
34.391

 52, 16.608, 34.391

 82, 16.608, 34.391

 42, 16.608, 34.391

 92, 16.608, 34.391

 32, 16.608, 34.391

 22, 16.608, 34.391

 12, 16.608, 34.391

 2, 16.608, 34.391

 0, 16.608, 34.391

 62, 16.608, 34.391

 62, 16.608, 34.391

 58, 24.075, 34.815

 66, 9.702, 34.146

54, 32.108, 35.451

71, 3.332, 33.951

50, 40.663, 36.355

75, 2.546, 214.312

47, 49.624, 37.557

80, 7.981, 214.261

44, 58.746, 39.026

84, 13.022,
214.377

41, 67.506, 40.562

89, 17.716,
214.548

39, 74.794, 41.621

39, 77.712, 42.248

93, 21.840,
208.292

95, 24.035,
197.935

Harmonies

Complementary

The Complementary color scheme is a pair of colors which are on the opposite of each other on the color wheel.



62, 16.608, 34.391



68, 13.936, 214.531

Rectangle

The Rectangle color scheme consists of four colors that form a rectangle on the color wheel.



62, 16.608, 34.391



62, 16.608, 84.391



62, 16.608, 214.391



62, 16.608, 264.391

Sweetspot

The Sweet Spot groups the original color and five complimentary colors.



62, 16.607, 34.399



88, 6.000, 34.014



61, 27.798, 330.372



46, 4.287, 34.041



96, 0.011, 296.813



49, 0.007, 296.813

Same Dimension

The Same Dimension uses a secret algorithm to generate beautiful new colors.



62, 16.607, 34.399



76, 25.611, 34.623



68, 17.696, 86.512



35, 3.418, 34.036



33, 68.487, 42.292



3, 8.209, 30.397

Inverse Universe

The Inverse Universe completely reimagines the original color for something new.



68, 13.936, 214.531



85, 20.508, 214.756



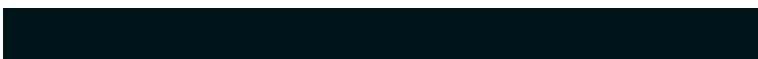
62, 17.503, 273.563



37, 3.222, 214.242



50, 29.768, 224.671



6, 7.663, 221.630

Previews

White Background



This preview shows how the CIELCh color 62, 16.608, 34.391 looks on a white background.

Color Contrast Check

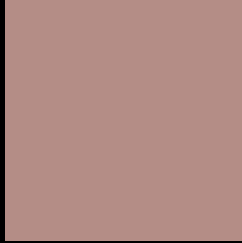
Large Text (above 18pt) WCAG AA × Fail

Any Text WCAG AA × Fail

Large Text (above 18pt) WCAG AAA × Fail

Any Text WCAG AAA × Fail

Black Background



This preview shows how the CIELCh color 62, 16.608, 34.391 looks on a black background.

Color Contrast Check

Large Text (above 18pt) WCAG AA ✓ Pass

Any Text WCAG AA ✓ Pass

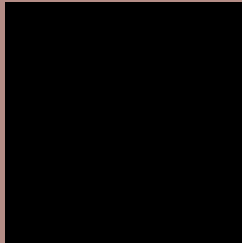
Large Text (above 18pt) WCAG AAA ✓ Pass

Any Text WCAG AAA ✓ Pass

If you want to check with other color combinations, try the [Color Contrast Checker](#).

CIELCh 62, 16.608, 34.391

Background



This preview shows how black text looks on a background with the CIELCh color 62, 16.608, 34.391.



This preview shows how white text looks on a background with the CIELCh color 62, 16.608, 34.391.

Color Blindness Simulation

Color vision deficiency is a very complex topic, and I could not describe the different causes any better than Wikipedia does, so if you want to learn more, you should check out their [article about color blindness](#).

Dichromacy



Original Color


62, 16.608, 34.391

Protanopia

62, 6.982, 92.806

Deuteranopia

62, 12.664, 51.981



Tritanopia
62, 17.926, 3.258

Trichromacy



Original Color
62, 16.608, 34.391

Protanomaly
62, 9.247, 61.330

Deuteranomaly
62, 13.995, 43.857

Tritanomaly
62, 16.603, 15.352

Monochromacy



Original Color
62, 16.608, 34.391

Achromatopsia
63, 0.008, 296.813

Achromatomaly
62, 5.782, 36.629

CSS Examples

Text

The CSS property to change the color of the text to CIELCh 62, 16.608, 34.391 is called "color". The color property can be set on classes, ids or directly on the HTML element.

This example shows how text in the color `rgb(180, 141, 134)` looks like.

```
.text, #text, p{  
    color:rgb(180, 141, 134)  
}
```

If you want to add a text shadow in that color use the text-shadow property, you can generate a text shadow directly with our [CSS Text Shadow Generator](#).

Here you see how black text with a 4 pixel rgb(180, 141, 134) colored shadow looks like.

```
.shadow{ text-shadow: 4px 4px 2px rgb(180, 141, 134) }
```

Border

The CSS property to change the border of an element to CIELCh 62, 16.608, 34.391 is called "border". The border property can be set on classes, ids or directly on the HTML element.

This example shows the color as border, it can be applied via the CSS property "border" or "border-color".

```
.border, #border, table{ border:4px solid rgb(180, 141, 134) }
```

If only the border color should be changed use the property `border-color`.

```
.border{ border-color:rgb(180, 141, 134) }
```

If you want to add a box shadow in that color use:

Here you see how a box with a 4 pixel `rgb(180, 141, 134)` colored shadow looks like.

```
.boxshadow{ -moz-box-shadow:4px 4px 4px  
4px rgb(180, 141, 134); -webkit-box-  
shadow:4px 4px 4px 4px rgb(180, 141, 134);  
box-shadow:4px 4px 4px 4px rgb(180, 141,  
134) }
```

Background

The CSS property to change the background color of an element to CIELCh 62, 16.608, 34.391 is called "background". The background property can be set on classes, ids or directly on the HTML element.

```
.background, #background, body{  
background: rgb(180, 141, 134) }
```

If only the background color should be changed can be used:

```
.background{ background-color: rgb(180,  
141, 134) }
```

This example shows the color as background, it is applied via the CSS property "background".

To optimize and compress your CSS code, you can use our [online CSS compressor and optimizer](#) based on csstidy. If you want to create a linear or radial gradient as background or border, check our [CSS Gradient Generator](#).

Hey! You found this booklet interesting? Support Converting Colors with the new Membership Option!

The pro membership hides all ads, plus gives you double the colors in the color bucket, and more awesome pro features!

[Learn more, Memberships starting at \\$2.50/m!](#)

**Follow me
on Twitter!**

@ConvertingColor