

Converting Colors

CIELCh(62, 17.415, 21.140)

Have a look what the booklet for
CIELCh(62, 17.415, 21.140) contains.

CIELCh(62, 17.523, 21.166)	3
<i>Conversions</i>	4
<i>Details</i>	6
<i>Harmonies</i>	11
<i>Previews</i>	20
<i>Color Blindness Simulation</i>	23
<i>CSS Examples</i>	26

Color

CIELCh(62, 17.523, 21.166)

Conversions

Conversions Part 1

Format	Color
Hex	B68B8B
RGB	182, 139, 139
RGB Percent	71%, 55%, 55%
CMY	0.2851, 0.4538, 0.4538
CMYK	0.00, 0.24, 0.24, 0.29
HSL	0°, 23%, 63%
HSV	0°, 24%, 71%
XYZ	33.3183, 30.4025, 28.6473
YIQ	151.8570, 25.6280, 9.1160

Conversions

Conversions Part 2

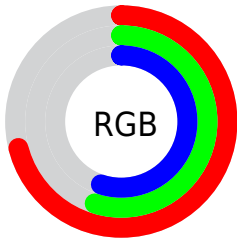
Format	Color
R _Y B	182, 139, 139
Decimal	11963275
CIE Lab	62.00, 16.34, 6.33
CIE LCh	62, 17.523, 21.166
Yxy	30.4025, 0.3607, 0.3291
Android (android.graphics.Color)	4290153355 (0xFFB68B8B)
YUV	151.8570, -6.3385, 26.4354
Hunter-Lab	55.1385, 11.3689, 7.7927

Details

The CIELCh color **62, 17.523, 21.166** is a light color, and the websafe version is hex **CC9999**. A complement of this color would be **71, 14.997, 198.242**, and the grayscale version is **63, 0.008, 296.813**.

A 20% lighter version of the original color is **82, 17.584, 22.474**, and **42, 17.333, 21.822** is the 20% darker color. If you saturate the color by 10%, you get **57, 25.888, 22.333**, and if you desaturate by 10%, it is **67, 9.713, 20.263**.

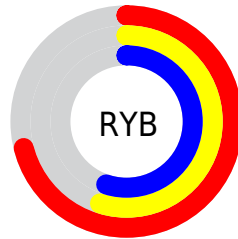
Distribution



Red (71%)

Green (55%)

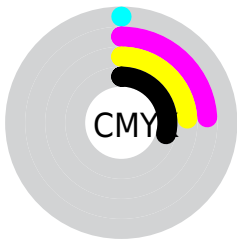
Blue (55%)



Red (71%)

Yellow (55%)

Blue (55%)

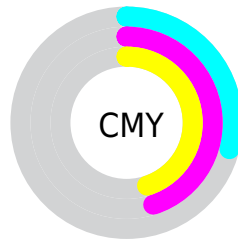


Cyan (0%)

Magenta (24%)

Yellow (24%)

Black (29%)



Cyan (29%)

Magenta (45%)

Yellow (45%)

Brightness & Saturation Gradients

These gradients show how the CIELCh color 62, 17.523, 21.166 changes by changing the brightness by 10 percent. The first figure shows a shift by +10% for each color and the second figure -10%.

Similar to the brightness gradients but the following saturation gradients show a change of the CIELCh color 62, 17.523, 21.166 by changing the saturation by 10% instead.

62, 17.523, 21.166

62, 17.523, 21.166

100, 17.523,
21.166

52, 17.523, 21.166

82, 17.523, 21.166

42, 17.523, 21.166

92, 17.523, 21.166

32, 17.523, 21.166

22, 17.523, 21.166

12, 17.523, 21.166

2, 17.523, 21.166

0, 17.523, 21.166

62, 17.523, 21.166

62, 17.523, 21.166

57, 25.888, 22.333

67, 9.713, 20.263

53, 34.750, 23.843

72, 2.472, 19.421

48, 43.965, 25.807

78, 4.228, 199.213

45, 53.305, 28.328

83, 10.432,
198.715

42, 62.448, 31.441

88, 16.188,
198.357

40, 70.915, 34.965

38, 77.725, 38.206

94, 21.551,
198.074

38, 81.267, 39.992

95, 23.332,
197.979

Harmonies

Complementary

The Complementary color scheme is a pair of colors which are on the opposite of each other on the color wheel.



62, 17.523, 21.166



71, 14.997, 198.242

Rectangle

The Rectangle color scheme consists of four colors that form a rectangle on the color wheel.



62, 17.523, 21.166



62, 17.523, 71.166



62, 17.523, 201.166



62, 17.523, 251.166

Sweetspot

The Sweet Spot groups the original color and five complimentary colors.



62, 17.521, 21.172



89, 6.037, 19.748



63, 28.736, 325.709



47, 3.964, 19.796



97, 0.011, 296.813



50, 0.007, 296.813

Same Dimension

The Same Dimension uses a secret algorithm to generate beautiful new colors.



62, 17.521, 21.172



76, 26.222, 21.701



67, 14.774, 72.520



36, 4.003, 19.924



32, 71.869, 39.600



2, 10.637, 19.412

Inverse Universe

The Inverse Universe completely reimagines the original color for something new.



71, 14.997, 198.242



90, 21.656, 198.018



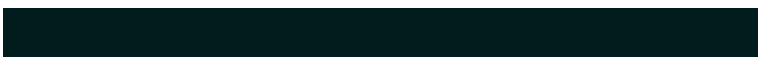
65, 13.876, 258.879



38, 3.777, 198.994



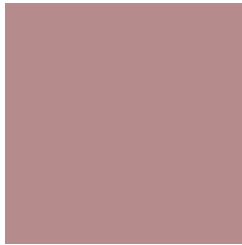
58, 34.638, 196.403



8, 10.516, 197.753

Previews

White Background



This preview shows how the CIELCh color 62, 17.523, 21.166 looks on a white background.

Color Contrast Check

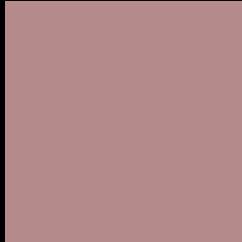
Large Text (above 18pt) WCAG AA × Fail

Any Text WCAG AA × Fail

Large Text (above 18pt) WCAG AAA × Fail

Any Text WCAG AAA × Fail

Black Background



This preview shows how the CIELCh color 62, 17.523, 21.166 looks on a black background.

Color Contrast Check

Large Text (above 18pt) WCAG AA ✓ Pass

Any Text WCAG AA ✓ Pass

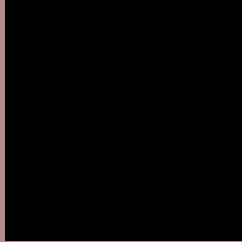
Large Text (above 18pt) WCAG AAA ✓ Pass

Any Text WCAG AAA ✓ Pass

If you want to check with other color combinations, try the [Color Contrast Checker](#).

CIELCh 62, 17.523, 21.166

Background



This preview shows how black text looks on a background with the CIELCh color 62, 17.523, 21.166.



This preview shows how white text looks on a background with the CIELCh color 62, 17.523, 21.166.

Color Blindness Simulation

Color vision deficiency is a very complex topic, and I could not describe the different causes any better than Wikipedia does, so if you want to learn more, you should check out their [article about color blindness](#).

Dichromacy



Original Color

62, 17.523, 21.166

Protanopia

62, 2.959, 68.418

Deuteranopia

62, 10.503, 41.971



Tritanopia
62, 18.721, 4.150

Trichromacy



Original Color
62, 17.523, 21.166

Protanomaly
62, 7.651, 28.448

Deuteranomaly
62, 12.941, 32.941

Tritanomaly
62, 18.437, 9.193

Monochromacy



Original Color
62, 17.523, 21.166

Achromatopsia
63, 0.008, 296.813

Achromatomaly
62, 6.305, 19.946

CSS Examples

Text

The CSS property to change the color of the text to CIELCh 62, 17.523, 21.166 is called "color". The color property can be set on classes, ids or directly on the HTML element.

This example shows how text in the color `rgb(182, 139, 139)` looks like.

```
.text, #text, p{  
    color:rgb(182, 139, 139)  
}
```

If you want to add a text shadow in that color use the text-shadow property, you can generate a text shadow directly with our [CSS Text Shadow Generator](#).

Here you see how black text with a 4 pixel rgb(182, 139, 139) colored shadow looks like.

```
.shadow{ text-shadow: 4px 4px 2px rgb(182, 139, 139) }
```

Border

The CSS property to change the border of an element to CIELCh 62, 17.523, 21.166 is called "border". The border property can be set on classes, ids or directly on the HTML element.

This example shows the color as border, it can be applied via the CSS property "border" or "border-color".

```
.border, #border, table{ border:4px solid rgb(182, 139, 139) }
```

If only the border color should be changed use the property `border-color`.

```
.border{ border-color:rgb(182, 139, 139) }
```

If you want to add a box shadow in that color use:

Here you see how a box with a 4 pixel `rgb(182, 139, 139)` colored shadow looks like.

```
.boxshadow{ -moz-box-shadow:4px 4px 4px  
4px rgb(182, 139, 139); -webkit-box-  
shadow:4px 4px 4px 4px rgb(182, 139, 139);  
box-shadow:4px 4px 4px 4px rgb(182, 139,  
139) }
```

Background

The CSS property to change the background color of an element to CIELCh 62, 17.523, 21.166 is called "background". The background property can be set on classes, ids or directly on the HTML element.

```
.background, #background, body{  
background: rgb(182, 139, 139) }
```

If only the background color should be changed can be used:

```
.background{ background-color: rgb(182,  
139, 139) }
```

This example shows the color as background, it is applied via the CSS property "background".

To optimize and compress your CSS code, you can use our [online CSS compressor and optimizer](#) based on csstidy. If you want to create a linear or radial gradient as background or border, check our [CSS Gradient Generator](#).

Hey! You found this booklet interesting? Support Converting Colors with the new Membership Option!

The pro membership hides all ads, plus gives you double the colors in the color bucket, and more awesome pro features!

[Learn more, Memberships starting at \\$2.50/m!](#)

**Follow me
on Twitter!**

@ConvertingColor