

Converting Colors

CIELCh(62, 25.239, 47.553)

Have a look what the booklet for
CIELCh(62, 25.239, 47.553) contains.

CIELCh(62, 25.282, 47.129)	3
<i>Conversions</i>	4
<i>Details</i>	6
<i>Harmonies</i>	11
<i>Previews</i>	20
<i>Color Blindness Simulation</i>	23
<i>CSS Examples</i>	26

Color

CIELCh(62, 25.282, 47.129)

Conversions

Conversions Part 1

Format	Color
Hex	BE8A76
RGB	190, 138, 118
RGB Percent	75%, 54%, 46%
CMY	0.2552, 0.4591, 0.5375
CMYK	0.00, 0.27, 0.38, 0.26
HSL	17°, 36%, 60%
HSV	17°, 38%, 74%
XYZ	33.5626, 30.4025, 21.2191
YIQ	151.2680, 37.4120, 4.8040

Conversions

Conversions Part 2

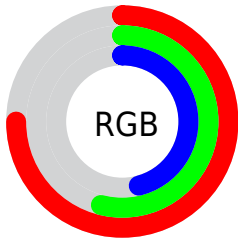
Format	Color
R _Y B	190, 146, 118
Decimal	12487286
CIE Lab	62.00, 17.20, 18.53
CIE LCh	62, 25.282, 47.129
Yxy	30.4025, 0.3940, 0.3569
Android (android.graphics.Color)	4290677366 (0xFFBE8A76)
YUV	151.2680, -16.4011, 33.9680
Hunter-Lab	55.1385, 12.1600, 15.7803

Details

The CIELCh color **62, 25.282, 47.129** is a dark color, and the websafe version is hex **CC9999**. A complement of this color would be **67, 19.784, 232.513**, and the grayscale version is **63, 0.008, 296.813**.

A 20% lighter version of the original color is **82, 25.408, 47.754**, and **42, 25.185, 46.879** is the 20% darker color. If you saturate the color by 10%, you get **58, 33.234, 46.956**, and if you desaturate by 10%, it is **66, 17.886, 47.439**.

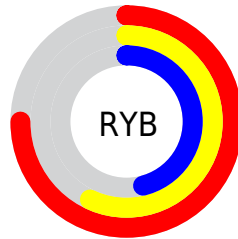
Distribution



Red (75%)

Green (54%)

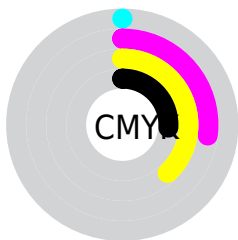
Blue (46%)



Red (75%)

Yellow (57%)

Blue (46%)

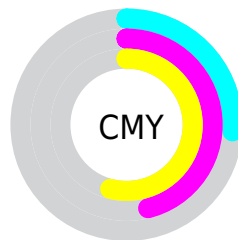


Cyan (0%)

Magenta (27%)

Yellow (38%)

Black (26%)



Cyan (26%)

Magenta (46%)

Yellow (54%)

Brightness & Saturation Gradients

These gradients show how the CIELCh color 62, 25.282, 47.129 changes by changing the brightness by 10 percent. The first figure shows a shift by +10% for each color and the second figure -10%.

Similar to the brightness gradients but the following saturation gradients show a change of the CIELCh color 62, 25.282, 47.129 by changing the saturation by 10% instead.

62, 25.282, 47.129

62, 25.282, 47.129

100, 25.282,
47.129

52, 25.282, 47.129

82, 25.282, 47.129

42, 25.282, 47.129

92, 25.282, 47.129

32, 25.282, 47.129

22, 25.282, 47.129

12, 25.282, 47.129

2, 25.282, 47.129

0, 25.282, 47.129

62, 25.282, 47.129

62, 25.282, 47.129

58, 33.234, 46.956

66, 17.886, 47.439

55, 41.719, 46.917

70, 11.033, 47.840

52, 50.628, 47.006

74, 4.686, 48.278

49, 59.682, 47.136

78, 1.202, 229.356

46, 68.241, 47.056

82, 6.679, 229.617

44, 75.261, 46.386

86, 11.793,
230.209

43, 76.704, 46.346

90, 16.588,
230.835

94, 18.980,
209.839

96, 21.121,
198.117

Harmonies

Complementary

The Complementary color scheme is a pair of colors which are on the opposite of each other on the color wheel.



62, 25.282, 47.129



67, 19.784, 232.513

Rectangle

The Rectangle color scheme consists of four colors that form a rectangle on the color wheel.



62, 25.282, 47.129



62, 25.282, 97.129



62, 25.282, 227.129



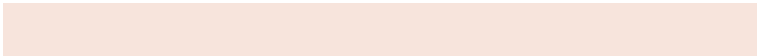
62, 25.282, 277.129

Sweetspot

The Sweet Spot groups the original color and five complimentary colors.



62, 25.281, 47.135



92, 8.185, 48.139



59, 39.541, 335.646



49, 5.574, 48.078



99, 0.012, 296.813



52, 0.007, 296.813

Same Dimension

The Same Dimension uses a secret algorithm to generate beautiful new colors.



62, 25.281, 47.135



76, 38.363, 46.983



71, 30.633, 93.756



38, 3.361, 48.219



36, 66.625, 46.787



4, 10.427, 38.595

Inverse Universe

The Inverse Universe completely reimagines the original color for something new.



67, 19.784, 232.513



83, 28.252, 233.802



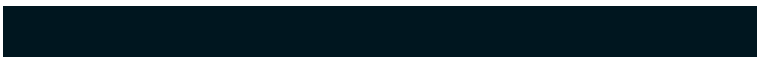
57, 31.737, 284.140



38, 3.191, 229.516



45, 32.996, 251.224



6, 9.570, 241.873

Previews

White Background



This preview shows how the CIELCh color 62, 25.282, 47.129 looks on a white background.

Color Contrast Check

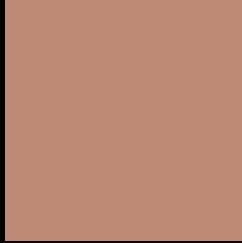
Large Text (above 18pt) WCAG AA × Fail

Any Text WCAG AA × Fail

Large Text (above 18pt) WCAG AAA × Fail

Any Text WCAG AAA × Fail

Black Background



This preview shows how the CIELCh color 62, 25.282, 47.129 looks on a black background.

Color Contrast Check

Large Text (above 18pt) WCAG AA ✓ Pass

Any Text WCAG AA ✓ Pass

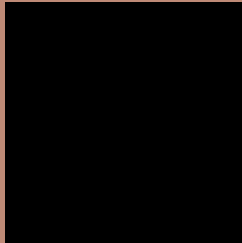
Large Text (above 18pt) WCAG AAA ✓ Pass

Any Text WCAG AAA ✓ Pass

If you want to check with other color combinations, try the [Color Contrast Checker](#).

CIELCh 62, 25.282, 47.129

Background



This preview shows how black text looks on a background with the CIELCh color 62, 25.282, 47.129.



This preview shows how white text looks on a background with the CIELCh color 62, 25.282, 47.129.

Color Blindness Simulation

Color vision deficiency is a very complex topic, and I could not describe the different causes any better than Wikipedia does, so if you want to learn more, you should check out their [article about color blindness](#).

Dichromacy



Original Color


62, 25.282, 47.129

Protanopia

62, 14.965, 94.135

Deuteranopia

62, 20.542, 66.839



Tritanopia
62, 23.950, 8.683

Trichromacy



Original Color
62, 25.282, 47.129

Protanomaly
62, 16.877, 71.965

Deuteranomaly
62, 22.032, 59.383

Tritanomaly
62, 23.113, 21.803

Monochromacy



Original Color
62, 25.282, 47.129

Achromatopsia
62, 0.008, 296.813

Achromatomaly
62, 8.604, 46.946

CSS Examples

Text

The CSS property to change the color of the text to CIELCh 62, 25.282, 47.129 is called "color". The color property can be set on classes, ids or directly on the HTML element.

This example shows how text in the color `rgb(190, 138, 118)` looks like.

```
.text, #text, p{  
    color:rgb(190, 138, 118)  
}
```

If you want to add a text shadow in that color use the text-shadow property, you can generate a text shadow directly with our [CSS Text Shadow Generator](#).

Here you see how black text with a 4 pixel rgb(190, 138, 118) colored shadow looks like.

```
.shadow{ text-shadow: 4px 4px 2px rgb(190, 138, 118) }
```

Border

The CSS property to change the border of an element to CIELCh 62, 25.282, 47.129 is called "border". The border property can be set on classes, ids or directly on the HTML element.

This example shows the color as border, it can be applied via the CSS property "border" or "border-color".

```
.border, #border, table{ border:4px solid rgb(190, 138, 118) }
```

If only the border color should be changed use the property `border-color`.

```
.border{ border-color:rgb(190, 138, 118) }
```

If you want to add a box shadow in that color use:

Here you see how a box with a 4 pixel `rgb(190, 138, 118)` colored shadow looks like.

```
.boxshadow{ -moz-box-shadow:4px 4px 4px  
4px rgb(190, 138, 118); -webkit-box-  
shadow:4px 4px 4px 4px rgb(190, 138, 118);  
box-shadow:4px 4px 4px 4px rgb(190, 138,  
118) }
```

Background

The CSS property to change the background color of an element to CIELCh 62, 25.282, 47.129 is called "background". The background property can be set on classes, ids or directly on the HTML element.

```
.background, #background, body{  
background: rgb(190, 138, 118) }
```

If only the background color should be changed can be used:

```
.background{ background-color: rgb(190,  
138, 118) }
```

This example shows the color as background, it is applied via the CSS property "background".

To optimize and compress your CSS code, you can use our [online CSS compressor and optimizer](#) based on csstidy. If you want to create a linear or radial gradient as background or border, check our [CSS Gradient Generator](#).

Hey! You found this booklet interesting? Support Converting Colors with the new Membership Option!

The pro membership hides all ads, plus gives you double the colors in the color bucket, and more awesome pro features!

[Learn more, Memberships starting at \\$2.50/m!](#)

**Follow me
on Twitter!**

@ConvertingColor