

Converting Colors

CIELCh(62, 26.408, 68.219)

Have a look what the booklet for
CIELCh(62, 26.408, 68.219) contains.

CIELCh(62, 26.373, 68.989)	3
<i>Conversions</i>	4
<i>Details</i>	6
<i>Harmonies</i>	11
<i>Previews</i>	20
<i>Color Blindness Simulation</i>	23
<i>CSS Examples</i>	26

Color

CIELCh(62, 26.373, 68.989)

Conversions

Conversions Part 1

Format	Color
Hex	B58F6B
RGB	181, 143, 107
RGB Percent	71%, 56%, 42%
CMY	0.2914, 0.4403, 0.5815
CMYK	0.00, 0.21, 0.41, 0.29
HSL	29°, 33%, 56%
HSV	29°, 41%, 71%
XYZ	31.4041, 30.4025, 18.0479
YIQ	150.2580, 34.2040, -3.1400

Conversions

Conversions Part 2

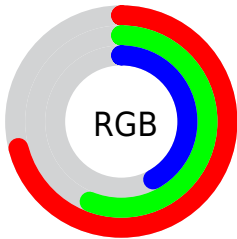
Format	Color
RYB	181, 177, 107
Decimal	11898731
CIELab	62.00, 9.46, 24.62
CIElCh	62, 26.373, 68.989
Yxy	30.4025, 0.3933, 0.3807
Android (android.graphics.Color)	4290088811 (0xFFB58F6B)
YUV	150.2580, -21.3262, 26.9607
Hunter-Lab	55.1385, 5.1723, 19.1901

Details

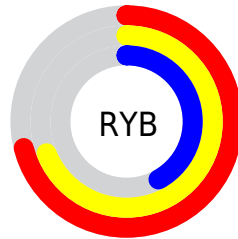
The CIELCh color **62, 26.373, 68.989** is a dark color, and the websafe version is hex **CC9966**. A complement of this color would be **59, 23.254, 260.920**, and the grayscale version is **62, 0.008, 296.813**.

A 20% lighter version of the original color is **82, 26.227, 69.282**, and **42, 26.307, 69.761** is the 20% darker color. If you saturate the color by 10%, you get **59, 33.602, 67.769**, and if you desaturate by 10%, it is **65, 19.445, 70.213**.

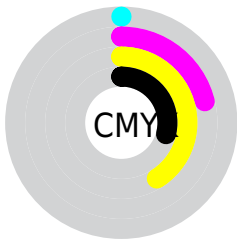
Distribution



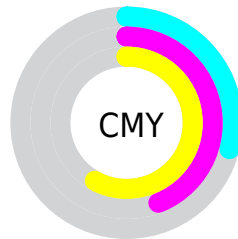
- Red (71%)
- Green (56%)
- Blue (42%)



- Red (71%)
- Yellow (69%)
- Blue (42%)



- Cyan (0%)
- Magenta (21%)
- Yellow (41%)
- Black (29%)



- Cyan (29%)
- Magenta (44%)
- Yellow (58%)

Brightness & Saturation Gradients

These gradients show how the CIELCh color 62, 26.373, 68.989 changes by changing the brightness by 10 percent. The first figure shows a shift by +10% for each color and the second figure -10%.

Similar to the brightness gradients but the following saturation gradients show a change of the CIELCh color 62, 26.373, 68.989 by changing the saturation by 10% instead.

■ 62, 26.373, 68.989

■ 62, 26.373, 68.989

■ 100, 26.373,
68.989

■ 52, 26.373, 68.989

■ 82, 26.373, 68.989

■ 42, 26.373, 68.989

■ 92, 26.373, 68.989

■ 32, 26.373, 68.989

■ 22, 26.373, 68.989

■ 12, 26.373, 68.989

■ 2, 26.373, 68.989

■ 0, 26.373, 68.989

■ 62, 26.373, 68.989

■ 62, 26.373, 68.989

■ 59, 33.602, 67.769

■ 65, 19.445, 70.213

57, 41.056, 66.519

68, 12.838, 71.421

54, 48.552, 65.195

70, 6.544, 72.602

52, 55.700, 63.677

73, 0.540, 73.195

50, 61.789, 61.717

76, 5.198, 255.076

48, 66.170, 59.568

79, 10.699,
256.172

82, 15.990,
257.256

85, 21.094,
258.304

88, 20.481,
246.309

Harmonies

Complementary

The Complementary color scheme is a pair of colors which are on the opposite of each other on the color wheel.



62, 26.373, 68.989



59, 23.254, 260.920

Rectangle

The Rectangle color scheme consists of four colors that form a rectangle on the color wheel.



62, 26.373, 68.989



62, 26.373, 118.989



62, 26.373, 248.989



62, 26.373, 298.989

Sweetspot

The Sweet Spot groups the original color and five complimentary colors.



62, 26.373, 68.995



89, 8.906, 72.456



54, 35.642, 346.722



47, 5.921, 72.307



96, 0.011, 296.813



49, 0.007, 296.813

Same Dimension

The Same Dimension uses a secret algorithm to generate beautiful new colors.



62, 26.373, 68.995



76, 39.866, 67.906



72, 38.633, 105.557



36, 3.342, 72.787



41, 58.362, 60.102



4, 7.554, 61.550

Inverse Universe

The Inverse Universe completely reimagines the original color for something new.



59, 23.254, 260.920



71, 34.105, 263.200



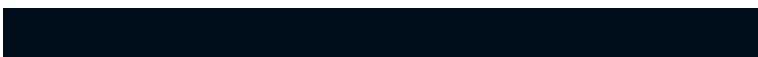
48, 42.780, 295.030



36, 3.265, 255.198



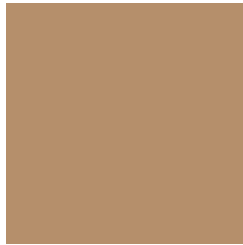
34, 47.333, 281.989



3, 8.699, 264.976

Previews

White Background



This preview shows how the CIELCh color 62, 26.373, 68.989 looks on a white background.

Color Contrast Check

Large Text (above 18pt) WCAG AA × Fail

Any Text WCAG AA × Fail

Large Text (above 18pt) WCAG AAA × Fail

Any Text WCAG AAA × Fail

Black Background



This preview shows how the CIELCh color 62, 26.373, 68.989 looks on a black background.

Color Contrast Check

Large Text (above 18pt) WCAG AA ✓ Pass

Any Text WCAG AA ✓ Pass

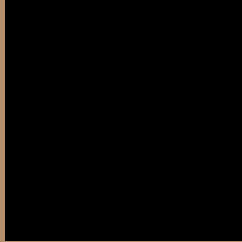
Large Text (above 18pt) WCAG AAA ✓ Pass

Any Text WCAG AAA ✓ Pass

If you want to check with other color combinations, try the [Color Contrast Checker](#).

CIELCh 62, 26.373, 68.989

Background



This preview shows how black text looks on a background with the CIELCh color 62, 26.373, 68.989.



This preview shows how white text looks on a background with the CIELCh color 62, 26.373, 68.989.

Color Blindness Simulation

Color vision deficiency is a very complex topic, and I could not describe the different causes any better than Wikipedia does, so if you want to learn more, you should check out their [article about color blindness](#).

Dichromacy



Original Color

62, 26.373, 68.989

Protanopia

62, 22.720, 95.759

Deuteranopia

62, 25.669, 72.638



Tritanopia
62, 20.026, 3.815

Trichromacy



Original Color
62, 26.373, 68.989

Protanomaly
62, 23.115, 84.758

Deuteranomaly
62, 25.941, 71.866

Tritanomaly
62, 18.575, 31.442

Monochromacy



Original Color
62, 26.373, 68.989

Achromatopsia
62, 0.008, 296.813

Achromatomaly
62, 9.237, 71.382

CSS Examples

Text

The CSS property to change the color of the text to CIELCh 62, 26.373, 68.989 is called "color". The color property can be set on classes, ids or directly on the HTML element.

This example shows how text in the color `rgb(181, 143, 107)` looks like.

```
.text, #text, p{  
    color:rgb(181, 143, 107)  
}
```

If you want to add a text shadow in that color use the text-shadow property, you can generate a text shadow directly with our [CSS Text Shadow Generator](#).

Here you see how black text with a 4 pixel rgb(181, 143, 107) colored shadow looks like.

```
.shadow{ text-shadow: 4px 4px 2px rgb(181, 143, 107) }
```

Border

The CSS property to change the border of an element to CIELCh 62, 26.373, 68.989 is called "border". The border property can be set on classes, ids or directly on the HTML element.

This example shows the color as border, it can be applied via the CSS property "border" or "border-color".

```
.border, #border, table{ border:4px solid rgb(181, 143, 107) }
```

If only the border color should be changed use the property `border-color`.

```
.border{ border-color:rgb(181, 143, 107) }
```

If you want to add a box shadow in that color use:

Here you see how a box with a 4 pixel `rgb(181, 143, 107)` colored shadow looks like.

```
.boxshadow{ -moz-box-shadow:4px 4px 4px 4px rgb(181, 143, 107); -webkit-box-shadow:4px 4px 4px 4px rgb(181, 143, 107); box-shadow:4px 4px 4px 4px rgb(181, 143, 107) }
```

Background

The CSS property to change the background color of an element to CIELCh 62, 26.373, 68.989 is called "background". The background property can be set on classes, ids or directly on the HTML element.

```
.background, #background, body{  
background: rgb(181, 143, 107) }
```

If only the background color should be changed can be used:

```
.background{ background-color: rgb(181,  
143, 107) }
```

This example shows the color as background, it is applied via the CSS property "background".

To optimize and compress your CSS code, you can use our [online CSS compressor and optimizer](#) based on csstidy. If you want to create a linear or radial gradient as background or border, check our [CSS Gradient Generator](#).

Hey! You found this booklet interesting? Support Converting Colors with the new Membership Option!

The pro membership hides all ads, plus gives you double the colors in the color bucket, and more awesome pro features!

[Learn more, Memberships starting at \\$2.50/m!](#)

**Follow me
on Twitter!**

@ConvertingColor