

Converting Colors

CIELCh(62, 27.862, 51.450)

Have a look what the booklet for
CIELCh(62, 27.862, 51.450) contains.

CIELCh(62, 28.048, 51.899)	3
<i>Conversions</i>	4
<i>Details</i>	6
<i>Harmonies</i>	11
<i>Previews</i>	20
<i>Color Blindness Simulation</i>	23
<i>CSS Examples</i>	26

Color

CIELCh(62, 28.048, 51.899)

Conversions

Conversions Part 1

Format	Color
Hex	C08A70
RGB	192, 138, 112
RGB Percent	75%, 54%, 44%
CMY	0.2485, 0.4601, 0.5620
CMYK	0.00, 0.28, 0.42, 0.25
HSL	20°, 39%, 59%
HSV	20°, 42%, 75%
XYZ	33.5929, 30.4025, 19.3329
YIQ	151.1820, 40.5300, 3.3620

Conversions

Conversions Part 2

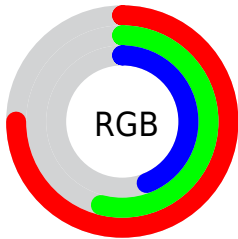
Format	Color
RYB	192, 151, 112
Decimal	12618352
CIELab	62.00, 17.31, 22.07
CIElCh	62, 28.048, 51.899
Yxy	30.4025, 0.4031, 0.3649
Android (android.graphics.Color)	4290808432 (0xFFC08A70)
YUV	151.1820, -19.3167, 35.7974
Hunter-Lab	55.1385, 12.2581, 17.8084

Details

The CIELCh color **62, 28.048, 51.899** is a light color, and the websafe version is hex **CC9966**. A complement of this color would be **65, 21.874, 239.969**, and the grayscale version is **62, 0.008, 296.813**.

A 20% lighter version of the original color is **82, 27.974, 52.316**, and **42, 27.829, 52.276** is the 20% darker color. If you saturate the color by 10%, you get **59, 36.078, 51.457**, and if you desaturate by 10%, it is **66, 20.539, 52.447**.

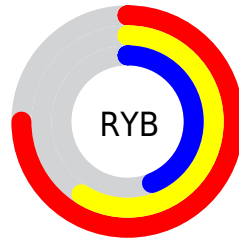
Distribution



Red (75%)

Green (54%)

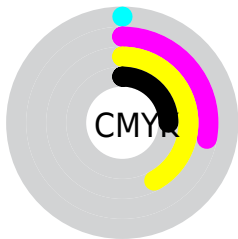
Blue (44%)



Red (75%)

Yellow (59%)

Blue (44%)

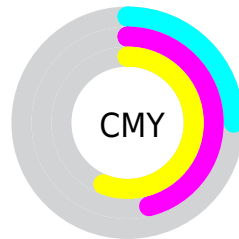


Cyan (0%)

Magenta (28%)

Yellow (42%)

Black (25%)



Cyan (25%)

Magenta (46%)

Yellow (56%)

Brightness & Saturation Gradients

These gradients show how the CIELCh color 62, 28.048, 51.899 changes by changing the brightness by 10 percent. The first figure shows a shift by +10% for each color and the second figure -10%.

Similar to the brightness gradients but the following saturation gradients show a change of the CIELCh color 62, 28.048, 51.899 by changing the saturation by 10% instead.

62, 28.048, 51.899

62, 28.048, 51.899

100, 28.048,
51.899

52, 28.048, 51.899

82, 28.048, 51.899

42, 28.048, 51.899

92, 28.048, 51.899

32, 28.048, 51.899

22, 28.048, 51.899

12, 28.048, 51.899

2, 28.048, 51.899

0, 28.048, 51.899

62, 28.048, 51.899

62, 28.048, 51.899

59, 36.078, 51.457

66, 20.539, 52.447

55, 44.581, 51.102

69, 13.549, 53.068

52, 53.394, 50.797

73, 7.049, 53.732

49, 62.125, 50.405

77, 0.997, 54.065

47, 69.934, 49.587

81, 4.655, 235.418

45, 75.309, 48.598

85, 9.950, 236.152

89, 14.932,
236.928

92, 17.381,
222.981

96, 20.305,
199.518

Harmonies

Complementary

The Complementary color scheme is a pair of colors which are on the opposite of each other on the color wheel.



62, 28.048, 51.899



65, 21.874, 239.969

Rectangle

The Rectangle color scheme consists of four colors that form a rectangle on the color wheel.



62, 28.048, 51.899



62, 28.048, 101.899



62, 28.048, 231.899



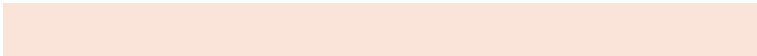
62, 28.048, 281.899

Sweetspot

The Sweet Spot groups the original color and five complimentary colors.



62, 28.047, 51.905



92, 9.750, 53.633



58, 42.240, 338.171



48, 6.877, 53.484



99, 0.012, 296.813



52, 0.007, 296.813

Same Dimension

The Same Dimension uses a secret algorithm to generate beautiful new colors.



62, 28.047, 51.905



75, 43.124, 51.494



72, 35.499, 96.561



39, 3.411, 53.886



38, 65.768, 49.064



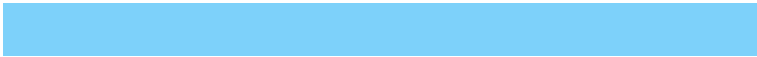
5, 11.782, 41.074

Inverse Universe

The Inverse Universe completely reimagines the original color for something new.



65, 21.874, 239.969



80, 31.517, 241.924



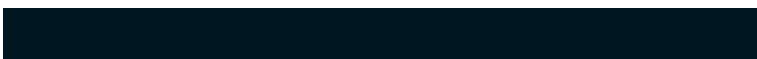
54, 37.688, 287.766



39, 3.255, 235.555



43, 35.931, 260.050



6, 10.756, 249.135

Previews

White Background



This preview shows how the CIELCh color 62, 28.048, 51.899 looks on a white background.

Color Contrast Check

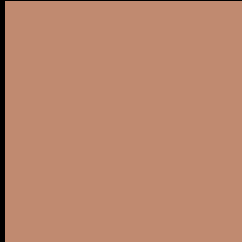
Large Text (above 18pt) WCAG AA × Fail

Any Text WCAG AA × Fail

Large Text (above 18pt) WCAG AAA × Fail

Any Text WCAG AAA × Fail

Black Background



This preview shows how the CIELCh color 62, 28.048, 51.899 looks on a black background.

Color Contrast Check

Large Text (above 18pt) WCAG AA ✓ Pass

Any Text WCAG AA ✓ Pass

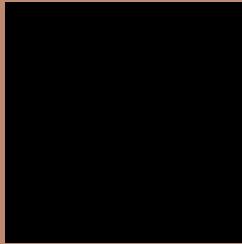
Large Text (above 18pt) WCAG AAA ✓ Pass

Any Text WCAG AAA ✓ Pass

If you want to check with other color combinations, try the [Color Contrast Checker](#).

CIELCh 62, 28.048, 51.899

Background



This preview shows how black text looks on a background with the CIELCh color 62, 28.048, 51.899.



This preview shows how white text looks on a background with the CIELCh color 62, 28.048, 51.899.

Color Blindness Simulation

Color vision deficiency is a very complex topic, and I could not describe the different causes any better than Wikipedia does, so if you want to learn more, you should check out their [article about color blindness](#).

Dichromacy





Tritanopia
62, 25.584, 9.768

Trichromacy



Original Color
62, 28.048, 51.899

Protanomaly
62, 20.694, 75.791

Deuteranomaly
62, 25.153, 63.300

Tritanomaly
62, 24.663, 25.748

Monochromacy



Original Color
62, 28.048, 51.899

Achromatopsia
62, 0.008, 296.813

Achromatomaly
62, 9.554, 51.637

CSS Examples

Text

The CSS property to change the color of the text to CIELCh 62, 28.048, 51.899 is called "color". The color property can be set on classes, ids or directly on the HTML element.

This example shows how text in the color `rgb(192, 138, 112)` looks like.

```
.text, #text, p{  
    color:rgb(192, 138, 112)  
}
```

If you want to add a text shadow in that color use the text-shadow property, you can generate a text shadow directly with our [CSS Text Shadow Generator](#).

Here you see how black text with a 4 pixel rgb(192, 138, 112) colored shadow looks like.

```
.shadow{ text-shadow: 4px 4px 2px rgb(192, 138, 112) }
```

Border

The CSS property to change the border of an element to CIELCh 62, 28.048, 51.899 is called "border". The border property can be set on classes, ids or directly on the HTML element.

This example shows the color as border, it can be applied via the CSS property "border" or "border-color".

```
.border, #border, table{ border:4px solid rgb(192, 138, 112) }
```

If only the border color should be changed use the property `border-color`.

```
.border{ border-color:rgb(192, 138, 112) }
```

If you want to add a box shadow in that color use:

Here you see how a box with a 4 pixel `rgb(192, 138, 112)` colored shadow looks like.

```
.boxshadow{ -moz-box-shadow:4px 4px 4px  
4px rgb(192, 138, 112); -webkit-box-  
shadow:4px 4px 4px 4px rgb(192, 138, 112);  
box-shadow:4px 4px 4px 4px rgb(192, 138,  
112) }
```

Background

The CSS property to change the background color of an element to CIELCh 62, 28.048, 51.899 is called "background". The background property can be set on classes, ids or directly on the HTML element.

```
.background, #background, body{  
background: rgb(192, 138, 112) }
```

If only the background color should be changed can be used:

```
.background{ background-color: rgb(192,  
138, 112) }
```

This example shows the color as background, it is applied via the CSS property "background".

To optimize and compress your CSS code, you can use our [online CSS compressor and optimizer](#) based on csstidy. If you want to create a linear or radial gradient as background or border, check our [CSS Gradient Generator](#).

Hey! You found this booklet interesting? Support Converting Colors with the new Membership Option!

The pro membership hides all ads, plus gives you double the colors in the color bucket, and more awesome pro features!

[Learn more, Memberships starting at \\$2.50/m!](#)

**Follow me
on Twitter!**

@ConvertingColor